



Planning the Week Ahead - Announcements

Monday

- **Events:**
- **1 Earnings:**

Tuesday

- **Events: US PMI**
- **1 Earnings:**

Wednesday

- **Events:**
- **5 Earnings:**

Thursday

- **Events:**
- **11 Earnings: DAL, CAG, PGR**

Friday

- **Events: US Core Consumer Price Index CPI**
- **1 Earnings:**

Short RTY Expected Move "Day Done in One" Trade

RTY EM Tomorrow= 20.5 Upper and Lower = 2,249.90

- RS** • 8:14 AM
RTY very close to EM here
- RS** • 8:19 AM
2250
- RS** • 8:19 AM
top
- CR** • 8:19 AM
Intraday trader note - RTY currently into upper intraday EM now into 2250: "RTY EM Tomorrow= 20.5 Upper and Lower = 2,249.90"
- CR** • 8:19 AM
Good spot Roger - short scalp playing here
- CR** • 8:20 AM
RTY EM short trade here 2250 on negative divergence playing for at least +5 if not back toward 2240 from 2250
- CR** • 8:22 AM
Gettign our +5 here RTY into 2245 from short EM 2250 for a one and done quickly
- CR** • 8:22 AM
Out for the roughly +5 quick scalp
- RS** • 8:23 AM
Same...+2 +4
- CR** • 8:26 AM
Excellent Roger!!
- CR** • 8:29 AM
RTY coming up into our 2240 target as well down from short EM 2250
- SA** • 8:37 AM
I took a+2 short RTY EM for +2 and earlier long RTY at 2236 for +2





Short RTY EM "Day Done in One" Trade #2!

CR **Corey Rosenbloom** • 8:59 AM
A bit better short here second time with that divergences RTY 2250 again (an hour after the first successful trade)

CR **Corey Rosenbloom** • 8:59 AM
Similar logic and setup against 6280 in ES

CR **Corey Rosenbloom** • 9:04 AM
Take the trade or not!

CR **Corey Rosenbloom** • 9:06 AM
For those who did, you're currently +3 with play back to 2245

MD **mikeldavy** • 9:06 AM
up 3+ handles so far

CR **Corey Rosenbloom** • 9:06 AM
Awesome Mike!!

CR **Corey Rosenbloom** • 9:07 AM
Can scalp out here with another +4 booked or hold to that 2245 for another day done in one

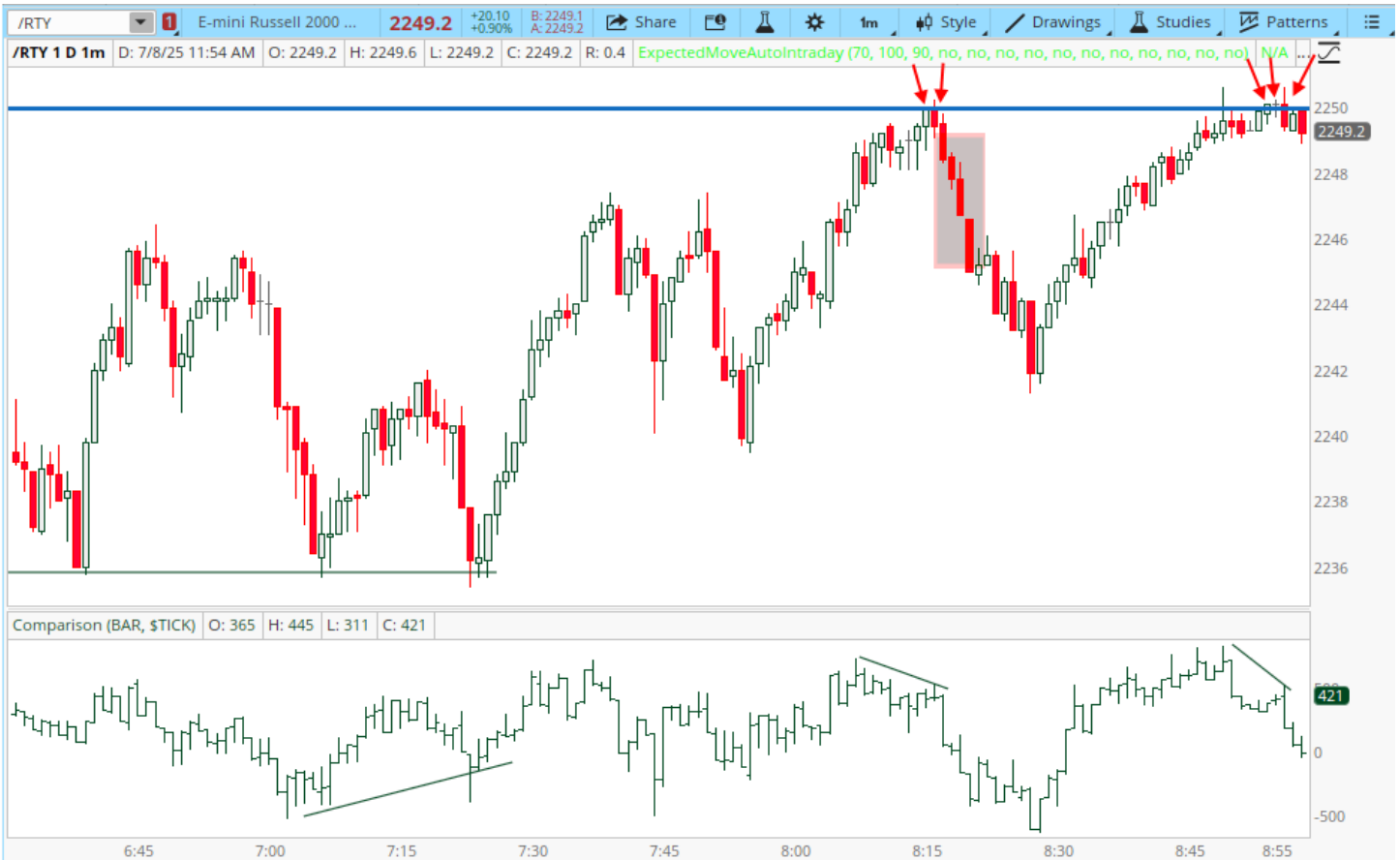
CR **Corey Rosenbloom** • 9:07 AM
And there it is! +5 short 2250 into 2245

CR **Corey Rosenbloom** • 9:07 AM
Two days done against RTY upper EM

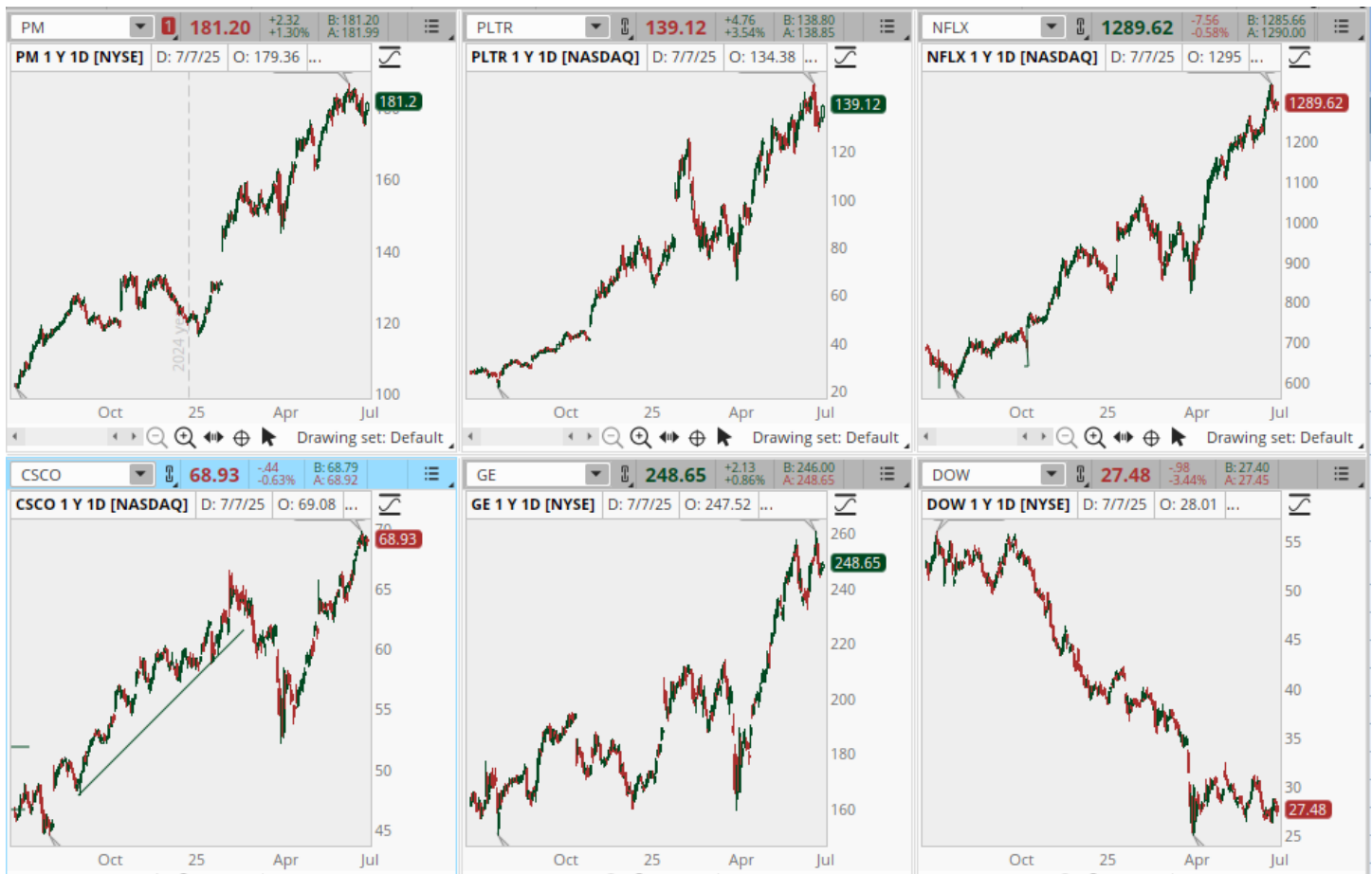
CR **Corey Rosenbloom** • 9:07 AM
+6 now into 2244 from short 2250 RTY EM

JW **JonW** • 9:08 AM
4 handles 3 contracts DD! on RTY

MJ **mlj** • 9:08 AM
+5 RTY taken wife to lunch, Thanks Corey



Major Trending Stock Scan Candidates



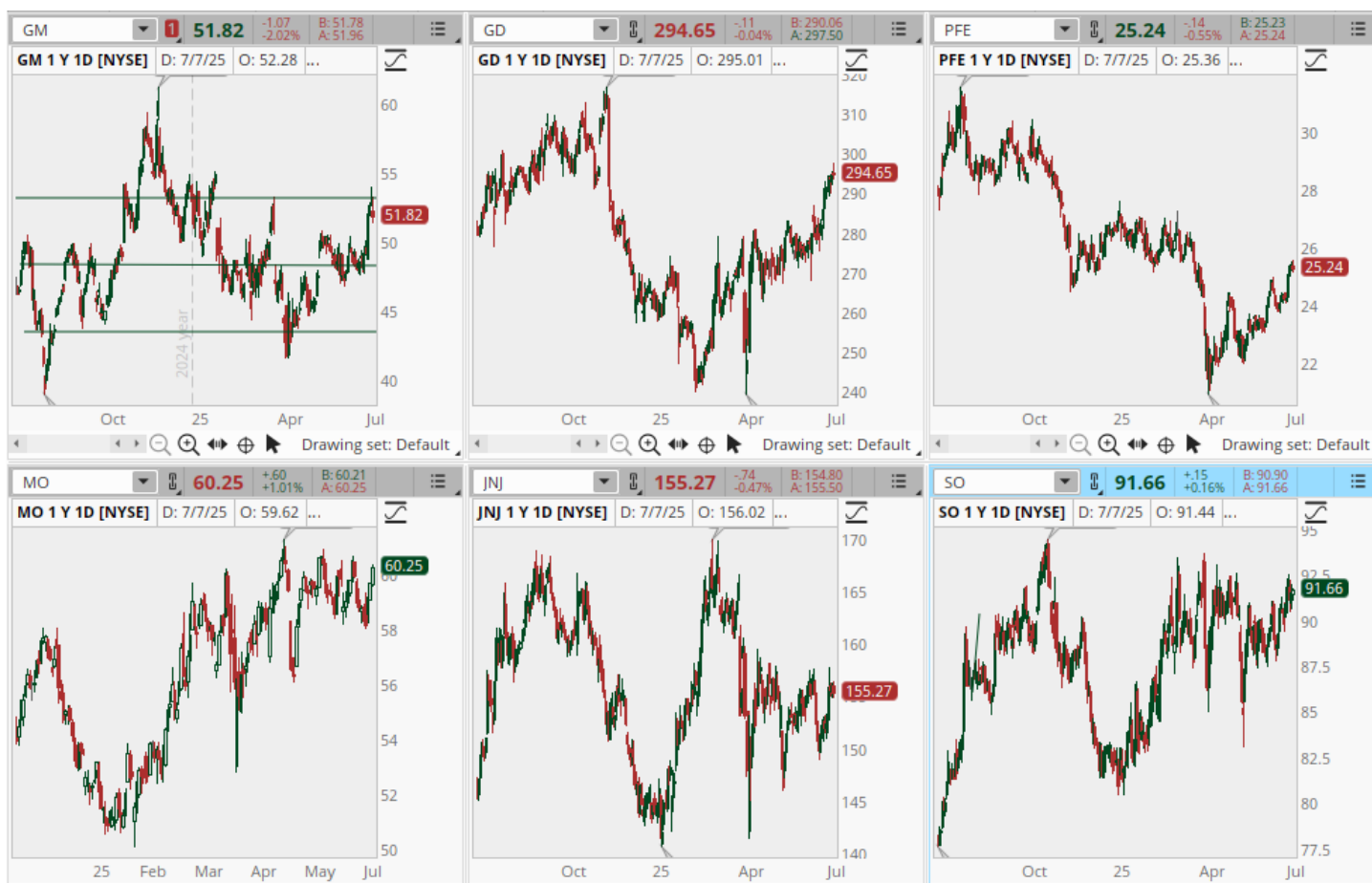
UPTREND: PM, PLTR, CSCO, NFLX, GE

DOWNTREND: DOW

HOW WE USE THESE STOCKS:

I write the Power-Trending Stock Section for Swing Traders looking for candidates that complex stock scans will likely miss. The scan targets strongly trending stocks and the expectation is that price will continue trending, though of course additional analysis is required rather than blind-buying these uptrending relative strength stocks collectively. To participate in these stocks, we typically wait for a pullback/retracement to a rising moving average or Trendline level to put on a buy/retracement where the stop is trailed above the average. These would be similar to how I describe intraday 'flag' retracements on a developing Trend Day.

Tightly Compressed SP500 Stocks (Low ADX Scan)

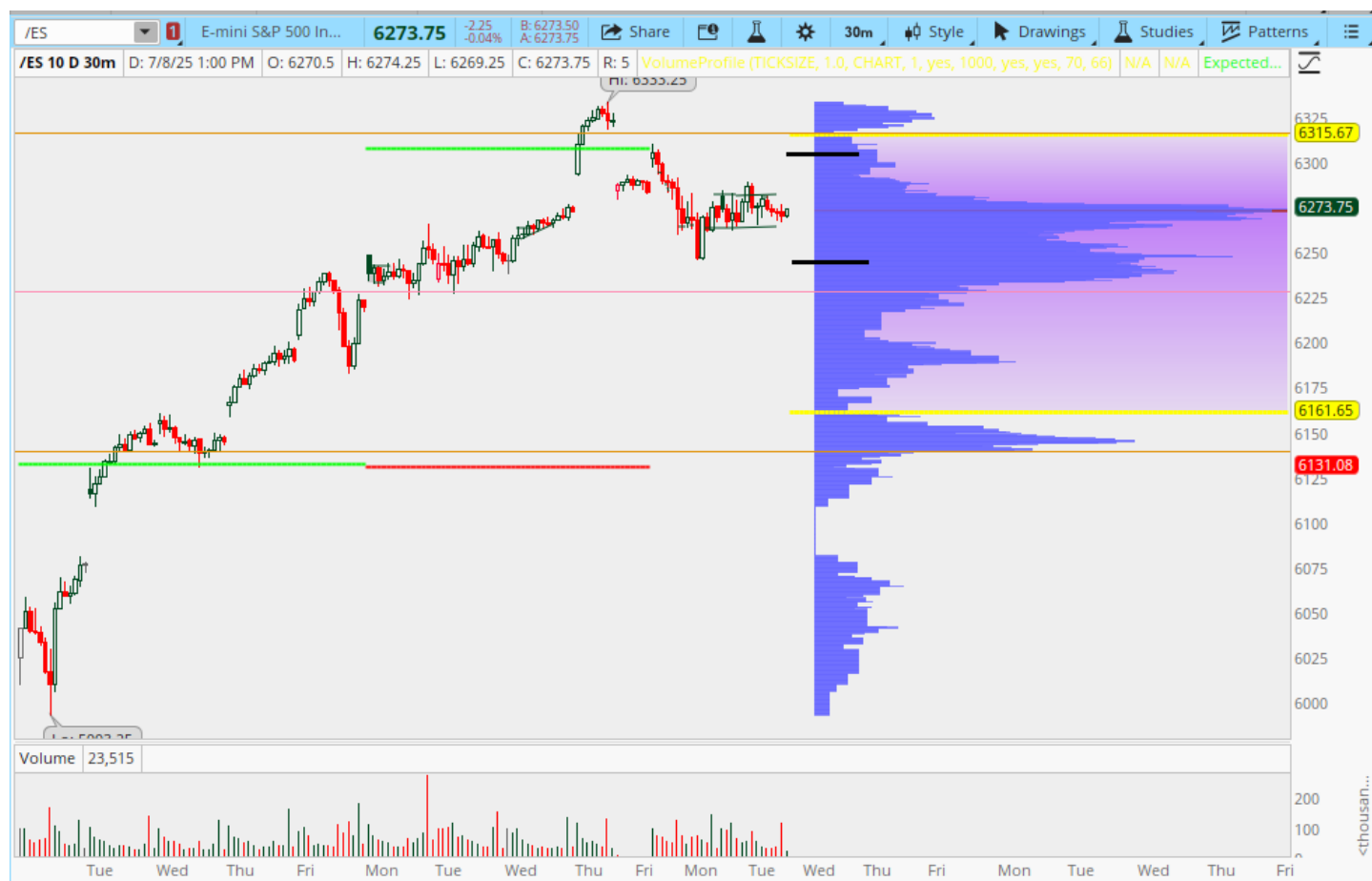


SIDEWAYS TREND: GM, GD, PFE, MO, JNJ, SO

Here are the top six "Compressed ADX" (lowest ADX) values from our simple scan of the S&P 100 (in Think or Swim). The goal of this simple stock scan is to identify compressed or consolidating (RANGE) stocks and either:

Play the fades (like a Range Day) into the trendlines by shorting the high & buying the low

Planning the 30-min Intraday /ES Volume Profile

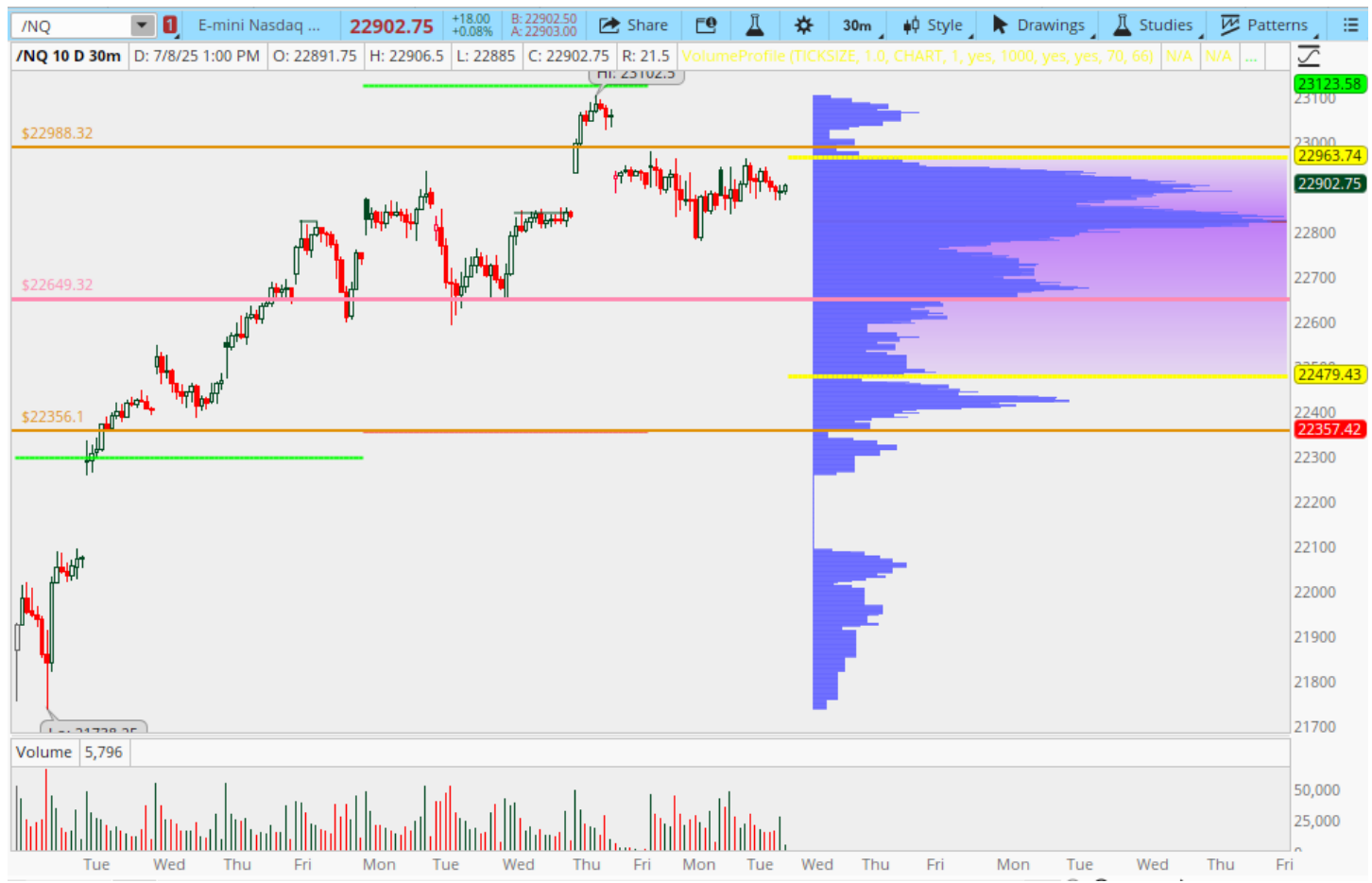


ES EM Tomorrow = 32 Upper and Lower = 6,302.00 and 6,238.00

/ES High Probability Play: Bear reversal down from 6350 toward 6225 (midpoint) is generally achieved with today's sell-off with potential toward 6150

/ES Low Probability/Big Impact Play: Bull breakout short-squeeze through new all time highs above 6325

Planning the 30-min Intraday /NQ Volume Profile



NQ EM Tomorrow = 139 Upper and Lower = 23,030 and 22,752

/NQ High Probability Play: Bear reversal down from 23,100 toward 22700

/NQ Low Probability/Big Impact Play: Bull breakout short-squeeze through all time highs above 23100

Planning the 30-min Intraday /RTY Volume Profile



RTY EM Tomorrow= 20 Upper and Lower = 2,265.00 and 2,225.00

/RTY High Probability Play: Bear reversal down from 2270 toward 2160

/RTY Low Probability/Big Impact Play: Short squeezed breakout trend day above 2270

Planning the 30-min Intraday /CL Volume Profile



/CL High Probability Play: Bearish down from \$69 toward \$66

/CL Low Probability/Big Impact Play: Continued bull breakout/rally above \$69 and \$70

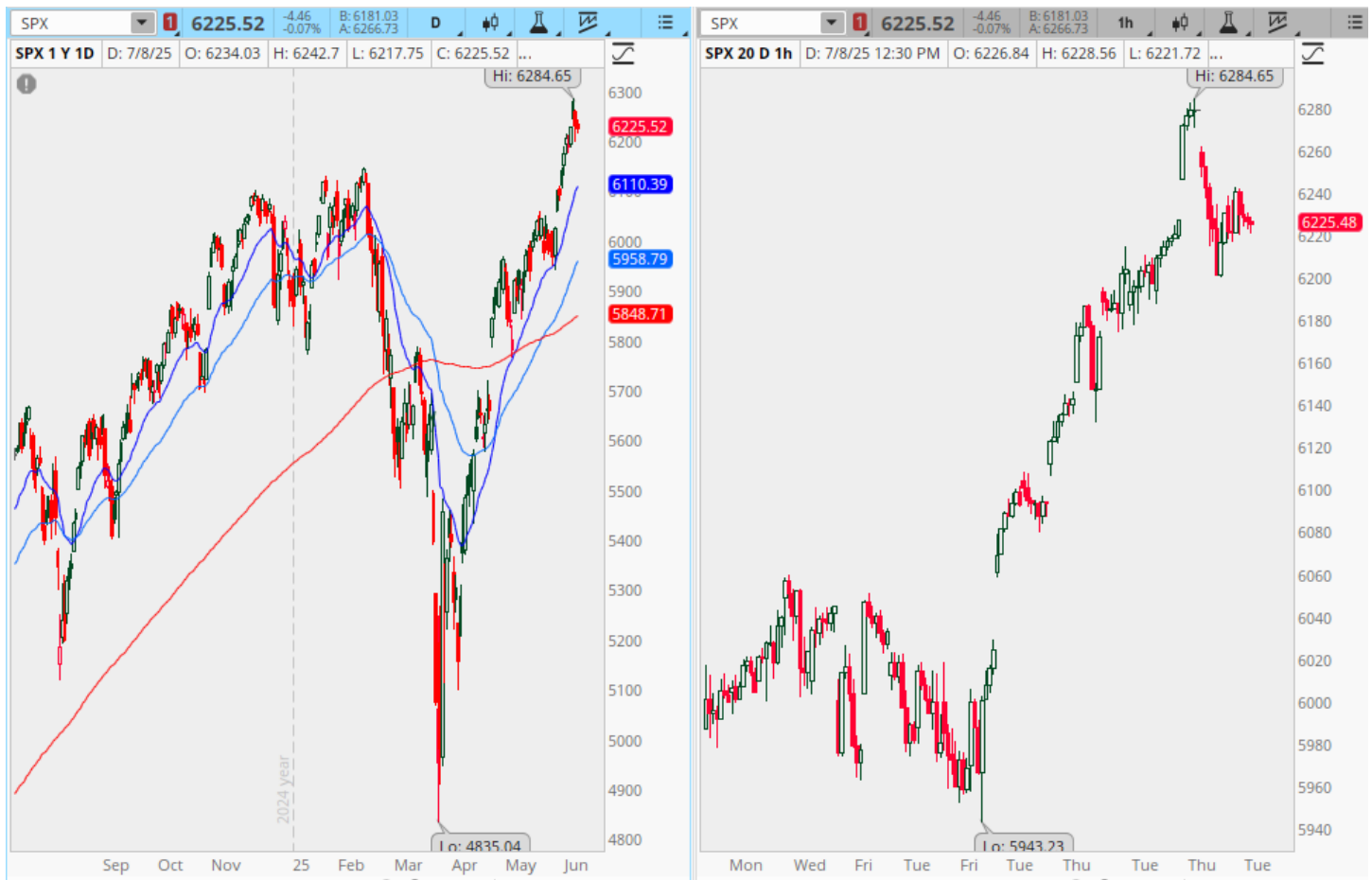
Planning the 30-min Intraday TLT Volume Profile



TLT High Probability Play: Bullish up away from \$86 toward \$87.50

TLT Low Probability/Big Impact Play: Bear breakdown beneath \$86

Planning the Next Day (Daily S&P 500 Cash Index)



Disclaimer:

Neither TheoTrade or any of its officers, directors, employees, other personnel, representatives, agents or independent contractors is, in such capacities, a licensed financial adviser, registered investment adviser, registered broker-dealer or FINRA|SIPC|NFA-member firm. TheoTrade does not provide investment or financial advice or make investment recommendations. TheoTrade is not in the business of transacting trades, nor does TheoTrade agree to direct your brokerage accounts or give trading advice tailored to your particular situation. Nothing contained in our content constitutes a solicitation, recommendation, promotion, or endorsement of any particular security, other investment product, transaction or investment. Trading Futures, Options on Futures, and retail off-exchange foreign currency transactions involves substantial risk of loss and is not suitable for all investors. You should carefully consider whether trading is suitable for you in light of your circumstances, knowledge, and financial resources. You may lose all or more of your initial investment. Opinions, market data, and recommendations are subject to change at any time. Past Performance is not necessarily indicative of future results.