



Tony Rago's Pre-Market Playbook

- ★ ES WEEKLY PIVOT 6293.33
- ★ NQ WEEKLY PIVOT 22914.50
- ★ Expected Move:
 - ES High 6370.50 Low 6279.50
 - NQ High 23260.00 Low 22854.00
- ★ **Bulls** need to hold above yest closes **6323 and 22834.25 -- long above these**
- ★ Breakouts are above yesterdays highs **6333.25 and 23102.50 - aggressive longs**
(await for confirmation with a new high and a retest of the highs from above that holds)
- ★ **Bears** need under overnight lows **short under 6290 and 22908**
- ★ Breakdown is below yest lows **6270 and 22852 -- aggressive shorts** (wait for confirmation with a new low and a retest of the lows from below that hold)
- ★ **RANGEBOUND: 2 Way trade long and shorts will work** to get the day done
- ★ Keep it simple and be patient for confirmation on either side or establish the range if we are going to be rangebound
- ★ Confirm rally continuation with sustained trade over the 30min IB High and likewise bearish under the IB Low

ECON:

- n/a

Pre-Market Trading Levels for today

GLOBEX

NQ

★ **HIGH:** 23028.50

★ **LOW:** 22908.25

★ **Bull Case** defend the 22833 to seek the 22912, 23000, 23106, 23250, 23312, 23333

★ **Bear Case** seal the 23250 to seek the 23106, 23000, 22912, 22833, 22812, 22750, 22633, 22612, 22500, 22412, 22333, 22312

NQ EXPECTED MOVE

★ High 23260.00

★ Low 22854.00

NQ (Prev. Day)

★ High 23102.50

★ Low 22827.00

★ Close 23059.00

NQ (Week Open) 22970.00

S&P 500

★ **HIGH** - 6315.00

★ **LOW** - 6290.75

★ **Bull Case:** defend the 6277 to seek the 6288, 6300, 6312, 6326, 6333, 6350, 6362, 6377, 6388, 6400, 6412

★ **Bear Case:** seal the 6333 to seek the 6326, 6312, 6300, 6288, 6277, 6262, 6250, 6233, 6226, 6212, 6200, 6188, 6177, 6162, 6150

ES EXPECTED MOVE

★ High 6370.50

★ Low 6279.50

ES (Prev Day)

★ High 6279.50

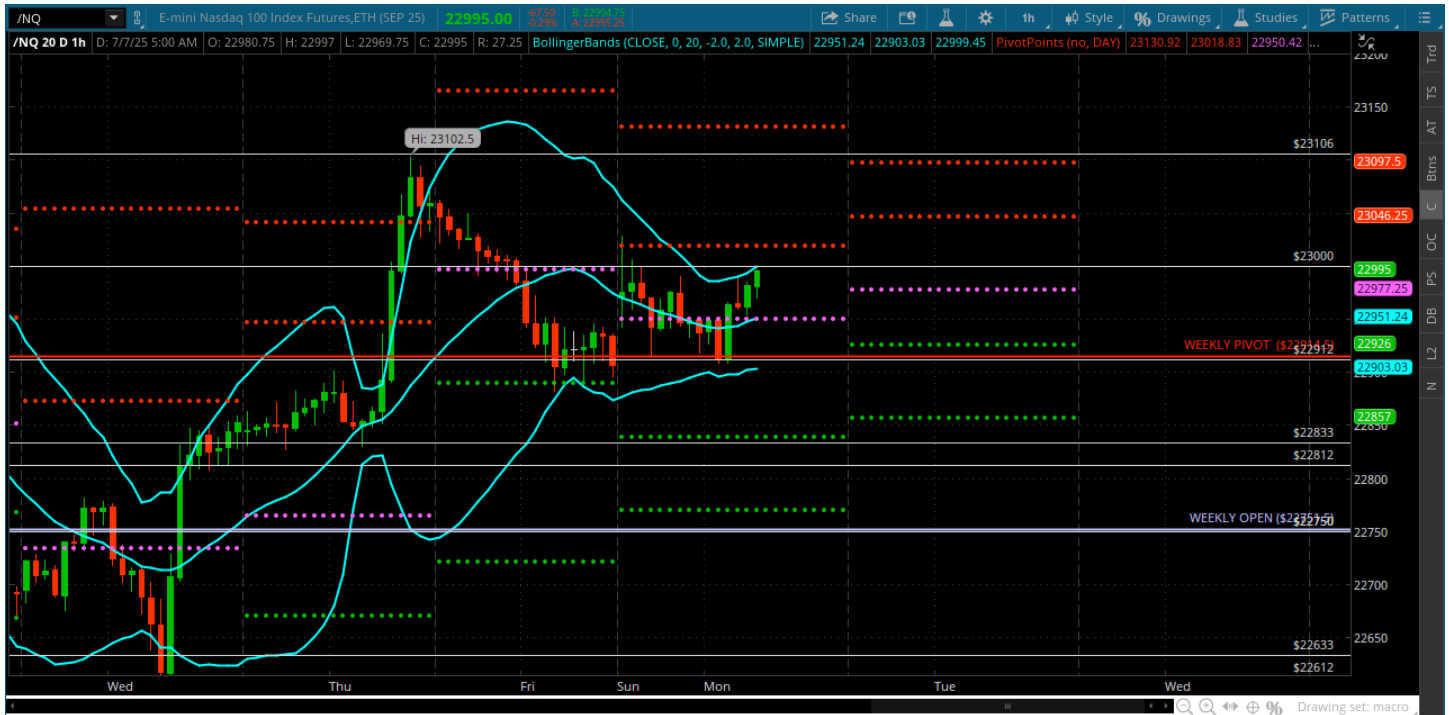
★ Low 6235.50

★ Close 6277.00

ES (Week Open) 6307.75

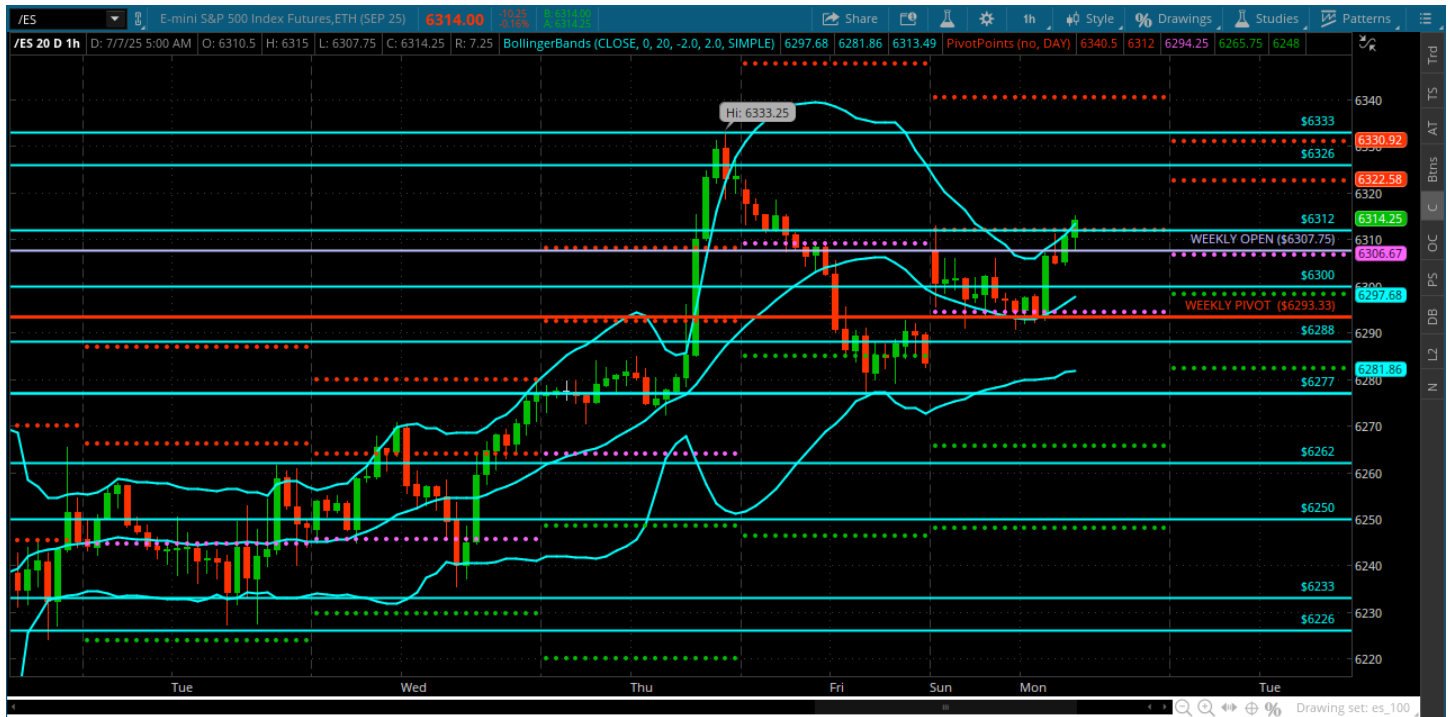
Pre-Market Charts to Watch

Monday, July 7, 2025 Pre-Market /NQ 1 Hour Chart



- A lot of engagement with weekly pivot overnight - will be all about that
- Some pretty good rejection from the all time high but was on no volume
- Always want to let price open after a holiday – lets see how we open and where the opening ranges land
- 23000 is a big roundy — and resistance at the moment

Monday, July 7, 2025 Pre-Market /ES 1 Hour Chart



- BIG rejection from the 6333 - lets see if we are going to re-test that level
- Always want to let it open after a holiday - will see where the opening ranges land
- We are in rarefied air up here and very stretched but bid remains strong
- One trade at a time - be objective

Disclaimer:

Disclaimer: Neither TheoTrade or any of its officers, directors, employees, other personnel, representatives, agents or independent contractors is, in such capacities, a licensed financial adviser, registered investment adviser, registered broker-dealer or FINRA|SIPC|NFA-member firm. TheoTrade does not provide investment or financial advice or make investment recommendations. TheoTrade is not in the business of transacting trades, nor does TheoTrade agree to direct your brokerage accounts or give trading advice tailored to your particular situation. Nothing contained in our content constitutes a solicitation, recommendation, promotion, or endorsement of any particular security, other investment product, transaction or investment. Trading Futures, Options on Futures, and retail off-exchange foreign currency transactions involves substantial risk of loss and is not suitable for all investors. You should carefully consider whether trading is suitable for you in light of your circumstances, knowledge, and financial resources. You may lose all or more of your initial investment. Opinions, market data, and recommendations are subject to change at any time. Past Performance is not necessarily indicative of future results.