



Tony Rago's Pre-Market Playbook

★ Expected Move:

- ES High 6310.00 Low 6240.00
- NQ High 23032.00 Low 22735.00

★ **Bulls** need to hold above yest closes **6268** and **22856.75** -- long above these

★ Breakouts are above yesterdays highs **6315.00** and **23028.50** - **aggressive longs**
(await for confirmation with a new high and a retest of the highs from above that holds)

★ **Bears** need under overnight lows **short under 6254.50** and **22808.50**

★ Breakdown is below yest lows **6246** and **22779** -- **aggressive shorts** (wait for confirmation with a new low and a retest of the lows from below that hold)

★ **RANGEBOUND: 2 Way trade long and shorts will work** to get the day done

★ Keep it simple and be patient for confirmation on either side or establish the range if we are going to be rangebound

★ Confirm rally continuation with sustained trade over the 30min IB High and likewise bearish under the IB Low

ECON:

- 3:00 pm Consumer credit

Pre-Market Trading Levels for today

GLOBEX

NQ

★ **HIGH:** 22972.75

★ **LOW:** 22808.50

★ **Bull Case** defend the 22750 to seek the 22812, 22833, 22912, 23000, 23106, 23250, 23312, 23333

★ **Bear Case** seal the 23106 to seek the 23000, 22912, 22833, 22812, 22750, 22633, 22612, 22500, 22412, 22333, 22312

NQ EXPECTED MOVE

★ High 23032.00

★ Low 22735.00

NQ (Prev. Day)

★ High 23028.50

★ Low 22779.75

★ Close 22839.00

NQ (Week Open) 22970.00

S&P 500

★ **HIGH** - 6289.00

★ **LOW** - 6254.50

★ **Bull Case:** defend the 6250 to seek the 6262, 6277, 6288, 6300, 6312, 6326, 6333, 6350, 6362, 6377, 6388, 6400, 6412

★ **Bear Case:** seal the 6312 to seek the 6300, 6288, 6277, 6262, 6250, 6233, 6226, 6212, 6200, 6188, 6177, 6162, 6150

ES EXPECTED MOVE

★ High 6310.00

★ Low 6240.00

ES (Prev Day)

★ High 6315.00

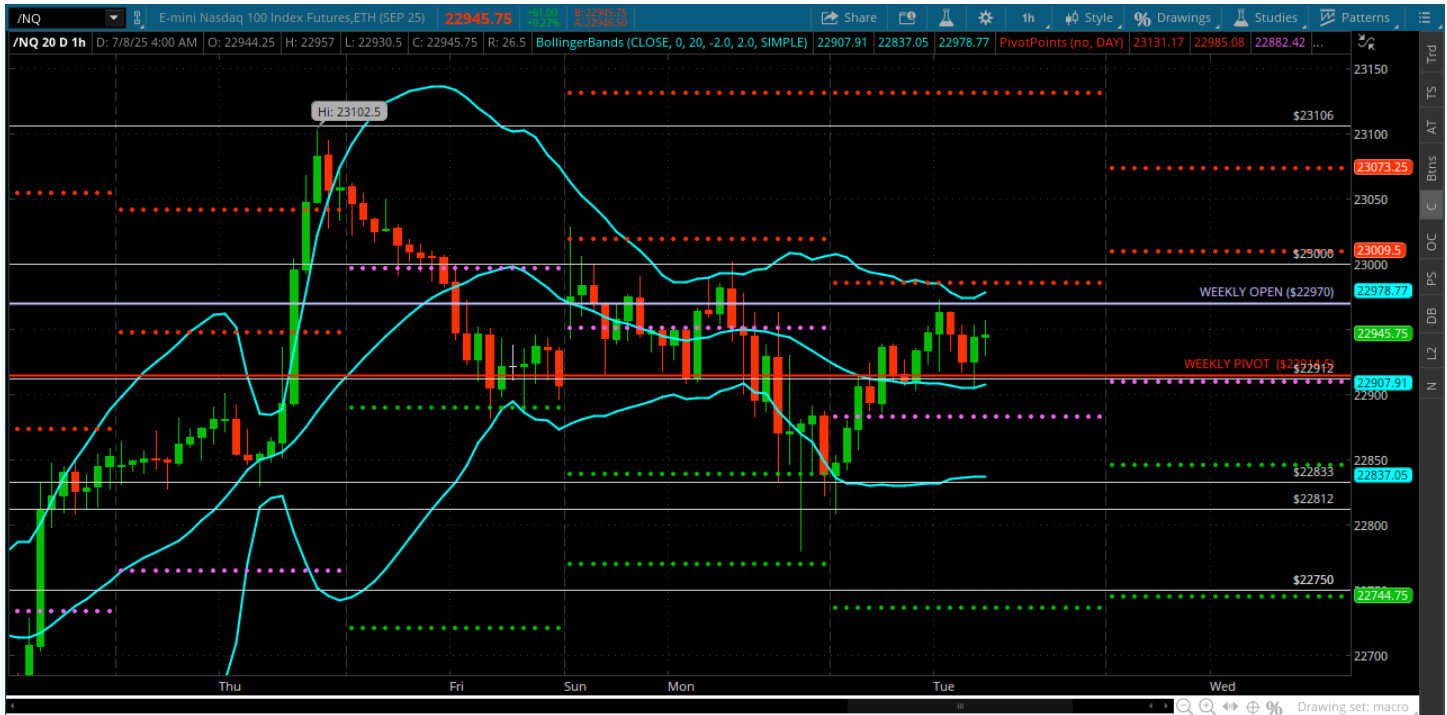
★ Low 6246.25

★ Close 6363.25

ES (Week Open) 6307.75

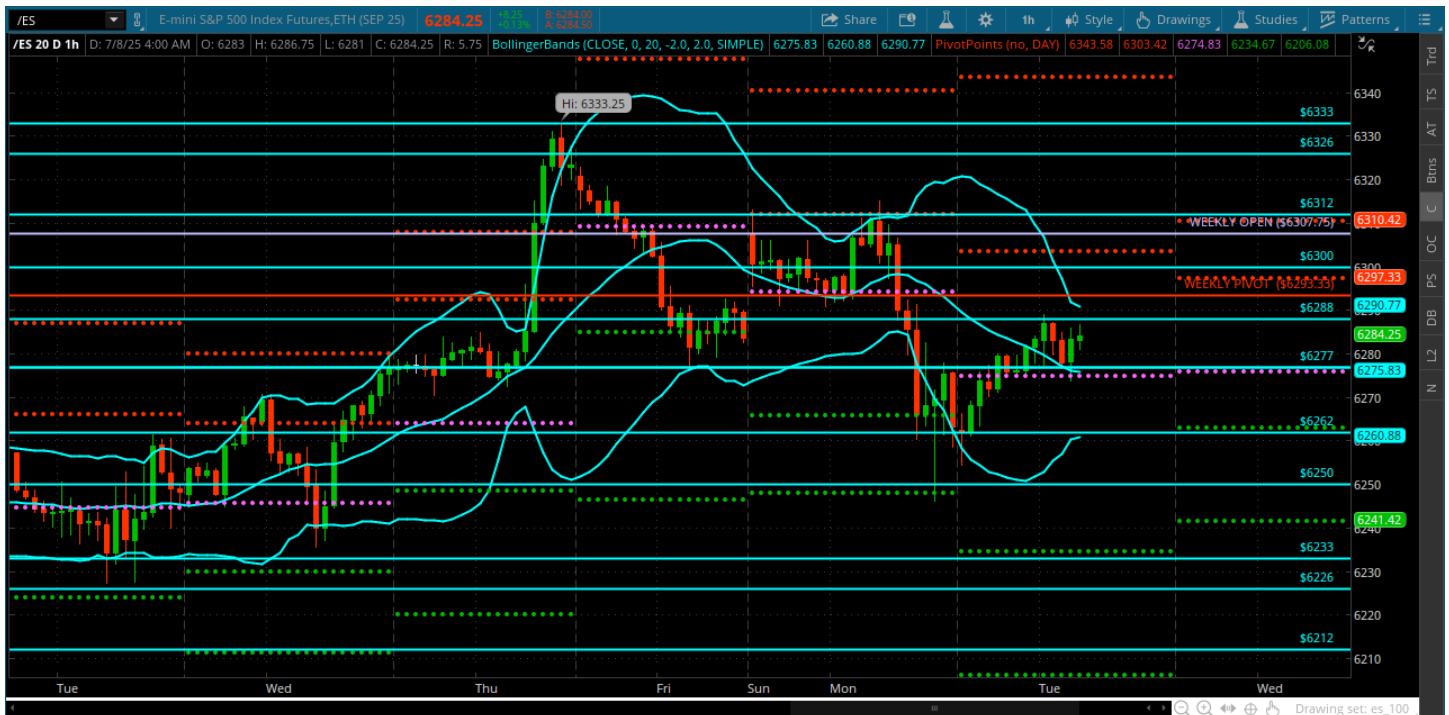
Pre-Market Charts to Watch

Tuesday, July 8, 2025 Pre-Market /NQ 1 Hour Chart



- Still dealing with weekly pivot here -- that is the bull bear line and it coincides with the 22912 macro
- Some weakness yesterday but I found it a difficult trade -- lots of whippy moves -- lets hope today is smoother
- If bears can sustain trade below weekly pivot we should go see yest lows and the 22750 -- with momentum the 22633
- Bulls above weekly pivot can reach for 23000 and a new all time high

Tuesday, July 8, 2025 Pre-Market /ES 1 Hour Chart



- Bears had a day yesterday and got us all the way back to the 6250 - which held and now under weekly pivot
- If they can hold weekly pivot as resistance in RTH we can revisit the 6250 and the 6233
- Back above the 6300 and 6312 opens the door for a retest of 6333 and new all time high

Disclaimer:

Disclaimer: Neither TheoTrade or any of its officers, directors, employees, other personnel, representatives, agents or independent contractors is, in such capacities, a licensed financial adviser, registered investment adviser, registered broker-dealer or FINRA|SIPC|NFA-member firm. TheoTrade does not provide investment or financial advice or make investment recommendations. TheoTrade is not in the business of transacting trades, nor does TheoTrade agree to direct your brokerage accounts or give trading advice tailored to your particular situation. Nothing contained in our content constitutes a solicitation, recommendation, promotion, or endorsement of any particular security, other investment product, transaction or investment. Trading Futures, Options on Futures, and retail off-exchange foreign currency transactions involves substantial risk of loss and is not suitable for all investors. You should carefully consider whether trading is suitable for you in light of your circumstances, knowledge, and financial resources. You may lose all or more of your initial investment. Opinions, market data, and recommendations are subject to change at any time. Past Performance is not necessarily indicative of future results.