



Tony Rago's Pre-Market Playbook

★ Expected Move:

- ES High 6310.00 Low 6240.00
- NQ High 23032.00 Low 22735.00

★ **Bulls** need to hold above yest closes **6271 and 22903 -- long above these**

★ Breakouts are above yesterdays highs **6289 and 22972 - aggressive longs** (await for confirmation with a new high and a retest of the highs from above that holds)

★ **Bears** need under overnight lows **short under 6260 and 22843.50**

★ Breakdown is below yest lows **6254 and 22903 -- aggressive shorts** (wait for confirmation with a new low and a retest of the lows from below that hold)

★ **RANGEBOUND: 2 Way trade long and shorts will work** to get the day done

★ Keep it simple and be patient for confirmation on either side or establish the range if we are going to be rangebound

★ Confirm rally continuation with sustained trade over the 30min IB High and likewise bearish under the IB Low

ECON:

- 10:00 am Wholesale inventories
- 2:00 pm Minutes of Fed's May FOMC meeting

Pre-Market Trading Levels for today

GLOBEX

NQ

★ HIGH: 22952.25

★ LOW: 22843.50

★ **Bull Case** defend the 22750 to seek the 22812, 22833, 22912, 23000, 23106, 23250, 23312, 23333

★ **Bear Case** seal the 23106 to seek the 23000, 22912, 22833, 22812, 22750, 22633, 22612, 22500, 22412, 22333, 22312

NQ EXPECTED MOVE

★ High 23030.00

★ Low 22752.00

NQ (Prev. Day)

★ High 22972.75

★ Low 22808.50

★ Close 22903.25

NQ (Week Open) 22970.00

S&P 500

★ **HIGH** - 6288.50

★ **LOW** - 6260.00

★ **Bull Case:** defend the 6250 to seek the 6262, 6277, 6288, 6300, 6312, 6326, 6333, 6350, 6362, 6377, 6388, 6400, 6412

★ **Bear Case:** seal the 6312 to seek the 6300, 6288, 6277, 6262, 6250, 6233, 6226, 6212, 6200, 6188, 6177, 6162, 6150

ES EXPECTED MOVE

★ High 6302.00

★ Low 6238.00

ES (Prev Day)

★ High 6289.00

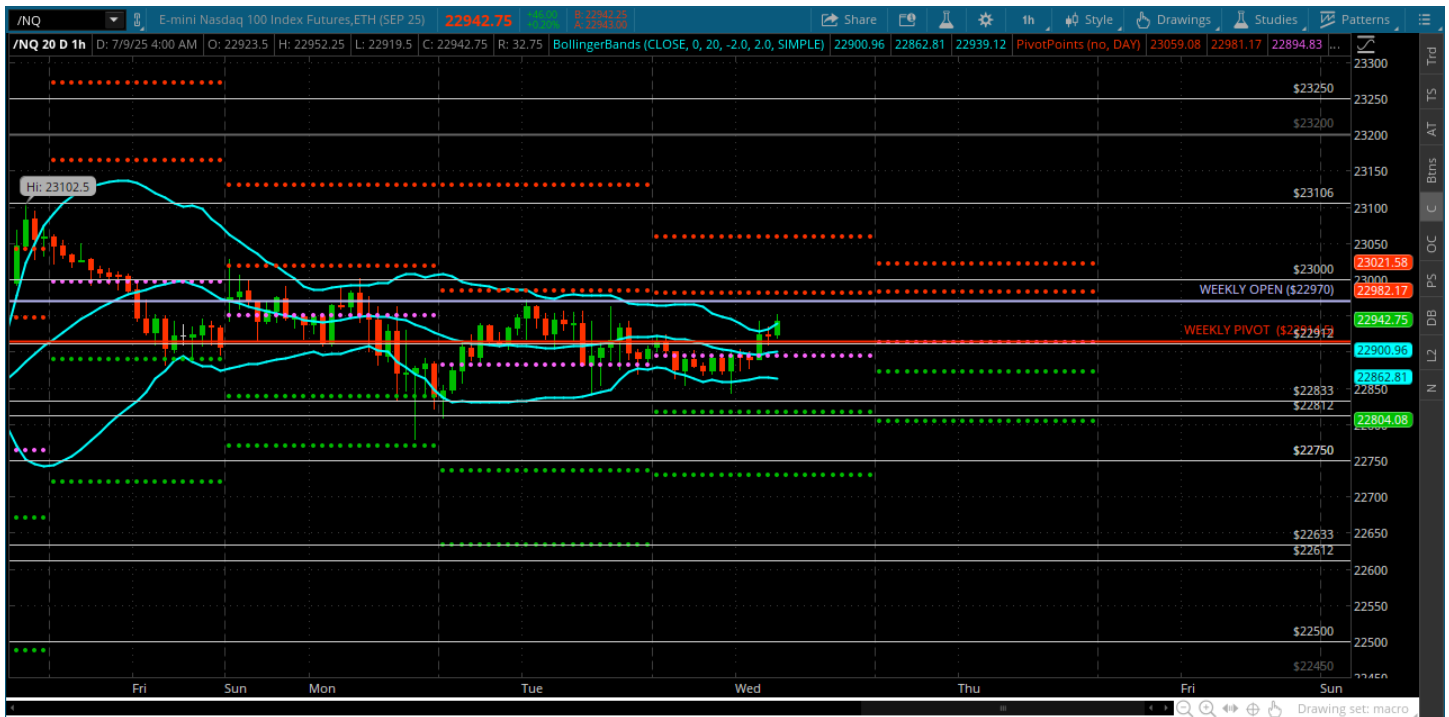
★ Low 6254.50

★ Close 6271.75

ES (Week Open) 6307.75

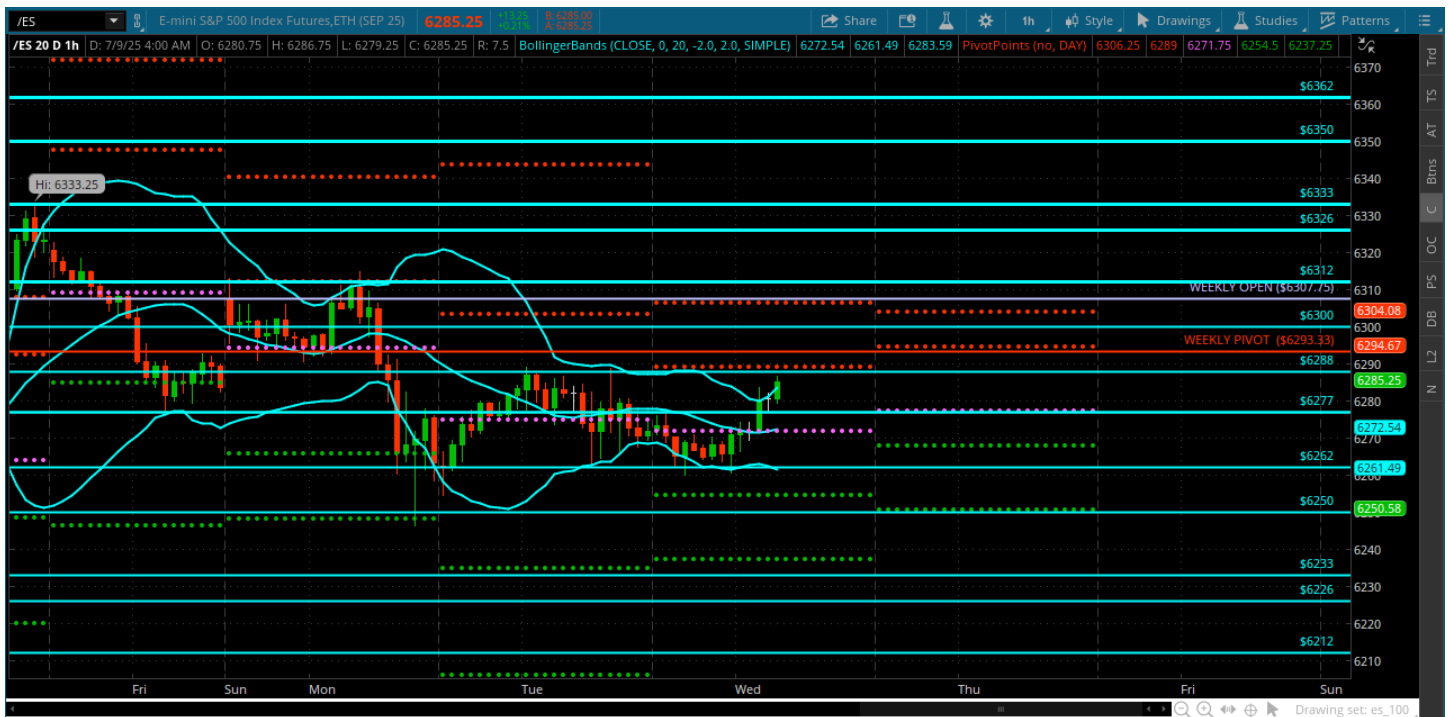
Pre-Market Charts to Watch

Wednesday, July 9, 2025 Pre-Market /NQ 1 Hour Chart



- Bands are getting very tight -- contraction leads to expansion
- Have to be patient and be ready to go with price when it expands
- Expansion to the upside is back over the 23102
- Expansion to the downside is below 22750

Wednesday, July 9, 2025 Pre-Market /ES 1 Hour Chart



- Bands are very tight - quiet tape
- A move is coming just have to be patient
- Expansion to the upside is above the 6312
- Expansion to the downside is below 6250

Disclaimer:

Disclaimer: Neither TheoTrade or any of its officers, directors, employees, other personnel, representatives, agents or independent contractors is, in such capacities, a licensed financial adviser, registered investment adviser, registered broker-dealer or FINRA|SIPC|NFA-member firm. TheoTrade does not provide investment or financial advice or make investment recommendations. TheoTrade is not in the business of transacting trades, nor does TheoTrade agree to direct your brokerage accounts or give trading advice tailored to your particular situation. Nothing contained in our content constitutes a solicitation, recommendation, promotion, or endorsement of any particular security, other investment product, transaction or investment. Trading Futures, Options on Futures, and retail off-exchange foreign currency transactions involves substantial risk of loss and is not suitable for all investors. You should carefully consider whether trading is suitable for you in light of your circumstances, knowledge, and financial resources. You may lose all or more of your initial investment. Opinions, market data, and recommendations are subject to change at any time. Past Performance is not necessarily indicative of future results.