



Tony Rago's Pre-Market Playbook

★ Expected Move:

- ES High 6336.00 Low 6278.00
- NQ High 23179.00 Low 22924.00

★ **Bulls** need to hold above yest closes **6307 and 23048 -- long above these**

★ Breakouts are above yesterdays highs **6315 and 23112 - aggressive longs** (await for confirmation with a new high and a retest of the highs from above that holds)

★ **Bears** need under overnight lows **short under 6287 and 22976**

★ Breakdown is below yest lows **6260 and 22843 -- aggressive shorts** (wait for confirmation with a new low and a retest of the lows from below that hold)

★ **RANGEBOUND: 2 Way trade long and shorts will work** to get the day done

★ Keep it simple and be patient for confirmation on either side or establish the range if we are going to be rangebound

★ Confirm rally continuation with sustained trade over the 30min IB High and likewise bearish under the IB Low

ECON:

- 8:30 am Initial jobless claims
- 10:00 am St. Louis Fed President Alberto Musalem speech
- 2:30 pm San Francisco Fed President Mary Daly speech

Pre-Market Trading Levels for today

GLOBEX

NQ

★ **HIGH:** 23077.00

★ **LOW:** 22976.50

★ **Bull Case** defend the 22833 to seek the 22912, 23000, 23106, 23250, 23312, 23333, 23412, 23500

★ **Bear Case** seal the 23250 to seek the 23106, 23000, 22912, 22833, 22812, 22750, 22633, 22612, 22500, 22412, 22333, 22312

NQ EXPECTED MOVE

★ High 23179.00

★ Low 22924.00

NQ (Prev. Day)

★ High 23112.00

★ Low 22843.50

★ Close 23043.50

NQ (Week Open) 22970.00

S&P 500

★ **HIGH** - 6312.25

★ **LOW** - 6287.50

★ **Bull Case:** defend the 6277 to seek the 6288, 6300, 6312, 6326, 6333, 6350, 6362, 6377, 6388, 6400, 6412

★ **Bear Case:** seal the 6333 to seek the 6326, 6312, 6300, 6288, 6277, 6262, 6250, 6233, 6226, 6212, 6200, 6188, 6177, 6162, 6150

ES EXPECTED MOVE

★ High 6336.00

★ Low 6278.00

ES (Prev Day)

★ High 6315.25

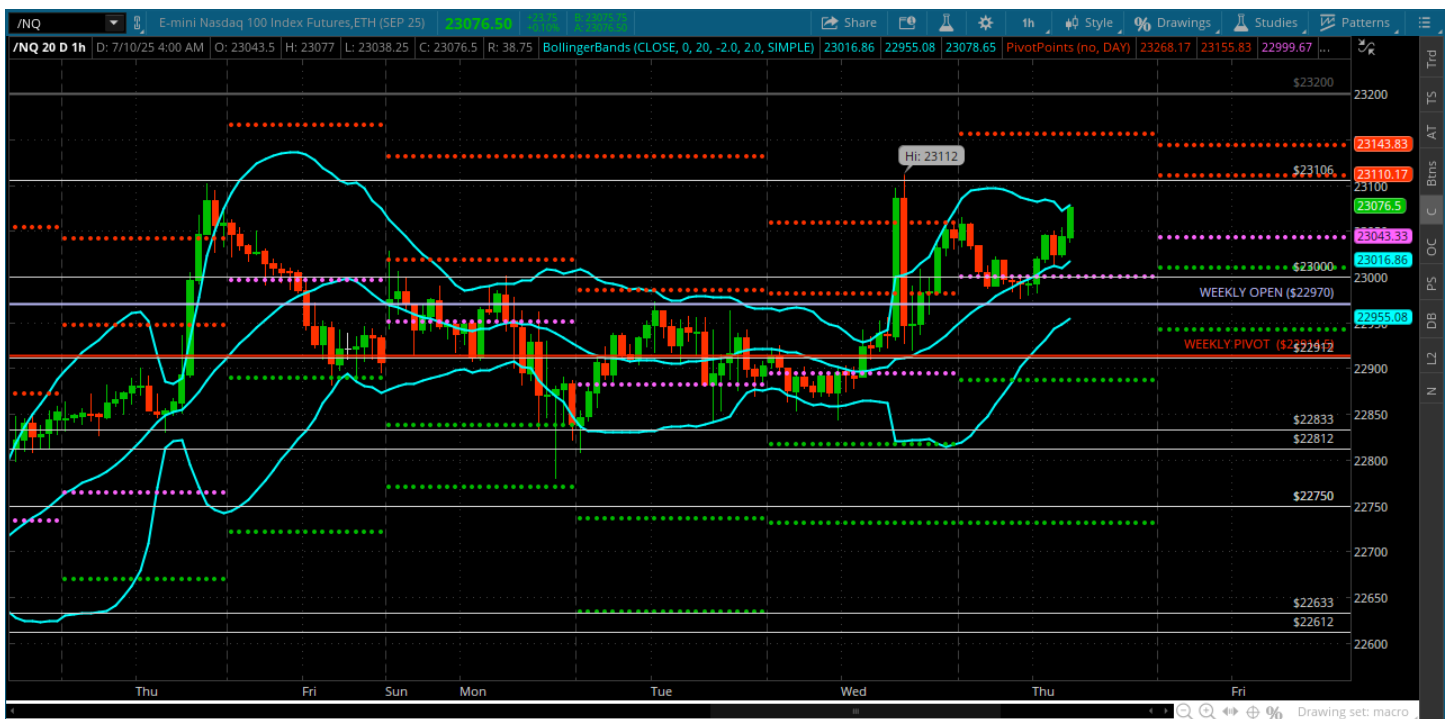
★ Low 6260.00

★ Close 6306.25

ES (Week Open) 6307.75

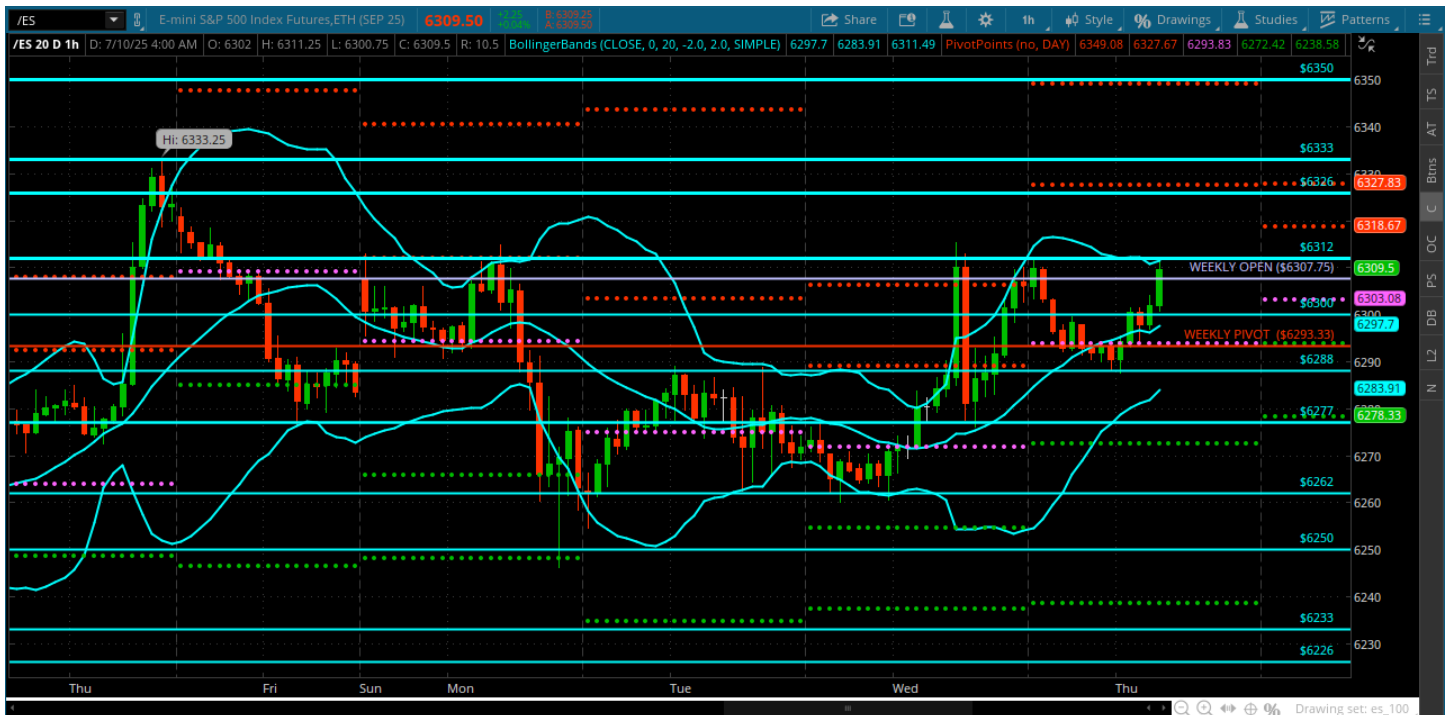
Pre-Market Charts to Watch

Thursday, July 10, 2025 Pre-Market /NQ 1 Hour Chart



- Got the expansion to a new high - pretty lack luster all things considered and now in a range between 23000 and 23106
- Very quiet market - VIX in the 15s
- Bulls need to hold above 22912 and keep buying dips and bears need a miracle
- May be a tape to trade less in and wait for some vol or a catalyst to shake it up

Thursday, July 10, 2025 Pre-Market /ES 1 Hour Chart



- Still hangin around the weekly open and 6312
- Bulls need to keep price above the 6300 and move towards the all time high 6333
- Very quiet tape -- trade less until we get some vol
-

Disclaimer:

Disclaimer: Neither TheoTrade or any of its officers, directors, employees, other personnel, representatives, agents or independent contractors is, in such capacities, a licensed financial adviser, registered investment adviser, registered broker-dealer or FINRA|SIPC|NFA-member firm. TheoTrade does not provide investment or financial advice or make investment recommendations. TheoTrade is not in the business of transacting trades, nor does TheoTrade agree to direct your brokerage accounts or give trading advice tailored to your particular situation. Nothing contained in our content constitutes a solicitation, recommendation, promotion, or endorsement of any particular security, other investment product, transaction or investment. Trading Futures, Options on Futures, and retail off-exchange foreign currency transactions involves substantial risk of loss and is not suitable for all investors. You should carefully consider whether trading is suitable for you in light of your circumstances, knowledge, and financial resources. You may lose all or more of your initial investment. Opinions, market data, and recommendations are subject to change at any time. Past Performance is not necessarily indicative of future results.