



## *Tony Rago's Pre-Market Playbook*

---

### ★ Expected Move:

- ES High 6349.50 Low 6272.50
- NQ High 23197.00 Low 22873.00

★ **Bulls** need to hold above yest closes **6308.50 and 23036** -- long above these

★ Breakouts are above yesterdays highs **6315 and 23066** - **aggressive longs** (await for confirmation with a new high and a retest of the highs from above that holds)

★ **Bears** need under overnight lows **short under 6300 and 22996**

★ Breakdown is below yest lows **6259 and 22803** -- **aggressive shorts** (wait for confirmation with a new low and a retest of the lows from below that hold)

★ **RANGEBOUND: 2 Way trade long and shorts will work** to get the day done

★ Keep it simple and be patient for confirmation on either side or establish the range if we are going to be rangebound

★ Confirm rally continuation with sustained trade over the 30min IB High and likewise bearish under the IB Low

### ECON:

- 8:30 am Core CPI
- 8:30 am Empire State manufacturing survey
- 9:15 am Fed Governor Michelle Bowman speech
- 12:45 pm Fed Governor Michael Barr speech
- 2:45 pm Boston Fed President Susan Collins speech

## *Pre-Market Trading Levels for today*

---

### GLOBEX

#### NQ

★ **HIGH:** 23204.50

★ **LOW:** 22996.00

★ **Bull Case** defend the 22912 to seek the 23000, 23106, 23250, 23312, 23333, 23412, 23500, 23612

★ **Bear Case** seal the 23250 to seek the 23106, 23000, 22912, 22833, 22812, 22750, 22633, 22612, 22500, 22412, 22333, 22312

#### NQ EXPECTED MOVE

★ High 23197.00

★ Low 22873.00

#### NQ (Prev. Day)

★ High 23066.50

★ Low 22803.00

★ Close 22036.25

**NQ (Week Open) 22860.75**

## S&P 500

★ **HIGH** - 6343.00

★ **LOW** - 6300.75

★ **Bull Case:** defend the 6300 to seek the 6312, 6326, 6333, 6350, 6362, 6377, 6388, 6400, 6412

★ **Bear Case:** seal the 6350 to seek the 6333, 6326, 6312, 6300, 6288, 6277, 6262, 6250, 6233, 6226, 6212, 6200, 6188, 6177, 6162, 6150

## ES EXPECTED MOVE

★ High 6349.50

★ Low 6272.50

## ES (Prev Day)

★ High 6315.00

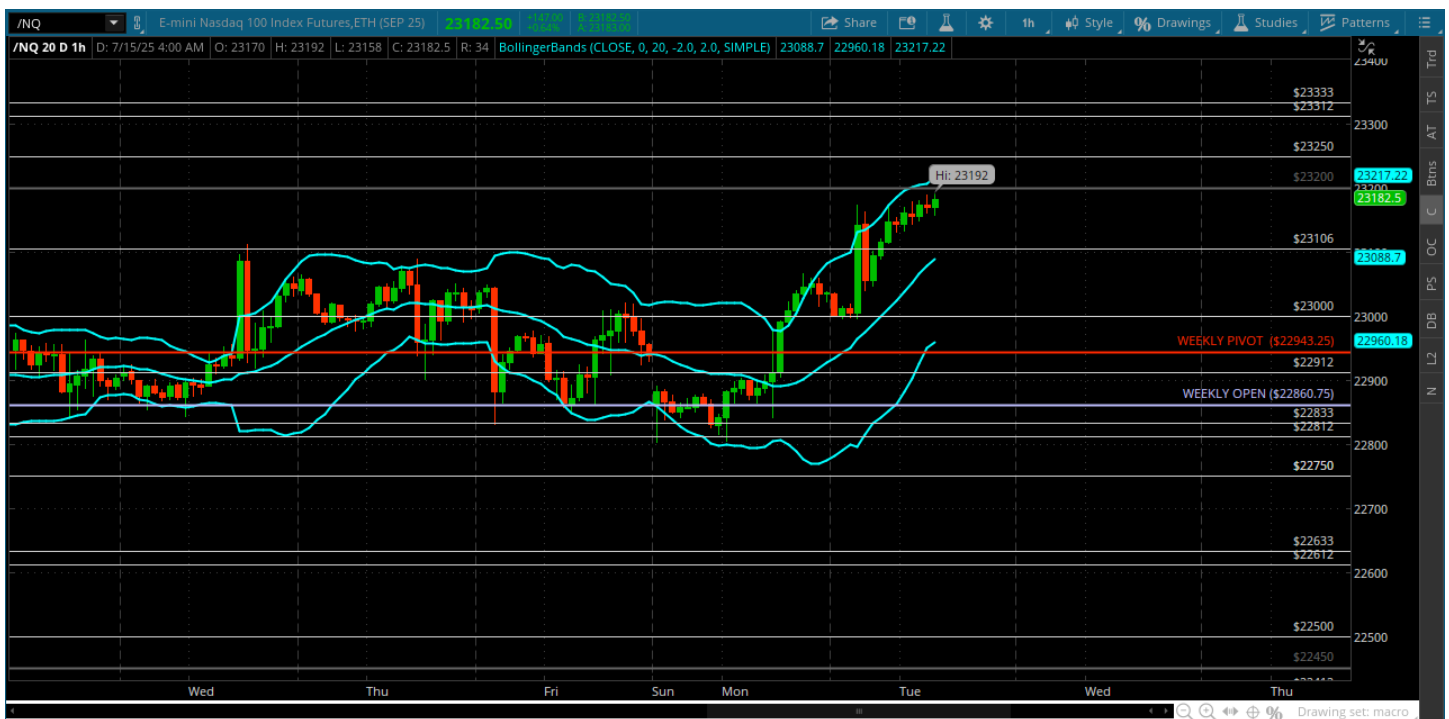
★ Low 6259.75

★ Close 6309.50

**ES (Week Open) 6274.00**

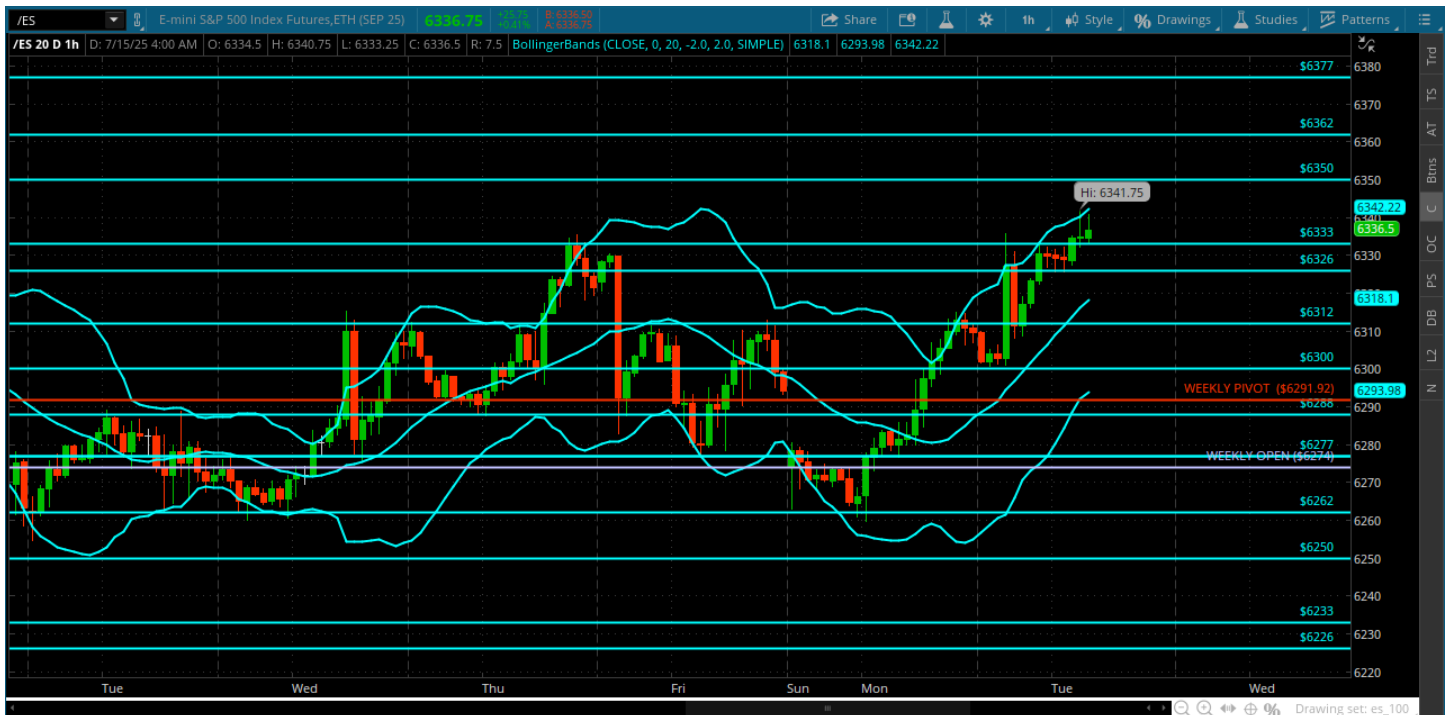
## Pre-Market Charts to Watch

### Tuesday, July 15, 2025 Pre-Market /NQ 1 Hour Chart



- Breaking out above the recent range to new all time highs
- This sets up the 23250 for a test
- Long on a pullback to the 23106
- Shorts are under the 23000 and weekly pivot

## Tuesday, July 15, 2025 Pre-Market /ES 1 Hour Chart



- Break out above the close to new all time highs
- This sets up the 6350 for a test
- Longs are 6326 and against the 6312 holding
- Shorts are under 6300

*Disclaimer:*

Disclaimer: Neither TheoTrade or any of its officers, directors, employees, other personnel, representatives, agents or independent contractors is, in such capacities, a licensed financial adviser, registered investment adviser, registered broker-dealer or FINRA|SIPC|NFA-member firm. TheoTrade does not provide investment or financial advice or make investment recommendations. TheoTrade is not in the business of transacting trades, nor does TheoTrade agree to direct your brokerage accounts or give trading advice tailored to your particular situation. Nothing contained in our content constitutes a solicitation, recommendation, promotion, or endorsement of any particular security, other investment product, transaction or investment. Trading Futures, Options on Futures, and retail off-exchange foreign currency transactions involves substantial risk of loss and is not suitable for all investors. You should carefully consider whether trading is suitable for you in light of your circumstances, knowledge, and financial resources. You may lose all or more of your initial investment. Opinions, market data, and recommendations are subject to change at any time. Past Performance is not necessarily indicative of future results.