



Tony Rago's Pre-Market Playbook

★ Expected Move:

- ES High 6319.00 Low 6245.00
- NQ High 23211.00 Low 22894.00

★ **Bulls** need to hold above yest closes **6279.25** and **23033** -- long above these

★ Breakouts are above yesterdays highs **6343** and **23222** - **aggressive longs** (await for confirmation with a new high and a retest of the highs from above that holds

★ **Bears** need under overnight lows **short under 6257** and **22929**

★ Breakdown is below yest lows **6272** and **22996** -- **aggressive shorts** (wait for confirmation with a new low and a retest of the lows from below that hold)

★ **RANGEBOUND: 2 Way trade long and shorts will work** to get the day done

★ Keep it simple and be patient for confirmation on either side or establish the range if we are going to be rangebound

★ Confirm rally continuation with sustained trade over the 30min IB High and likewise bearish under the IB Low

ECON:

- 8:30 am Core PPI year over year
- 9:15 am Industrial production
- 9:15 am Capacity utilization
- 10:00 am Federal Reserve Governor Michael Barr speech
- 2:00 pm Fed Beige Book

Pre-Market Trading Levels for today

GLOBEX

NQ

★ **HIGH:** 23085.00

★ **LOW:** 22929.00

★ **Bull Case** defend the 22912 to seek the 23000, 23106, 23250, 23312, 23333, 23412, 23500, 23612

★ **Bear Case** seal the 23250 to seek the 23106, 23000, 22912, 22833, 22812, 22750, 22633, 22612, 22500, 22412, 22333, 22312

NQ EXPECTED MOVE

★ High 23211.00

★ Low 22894.00

NQ (Prev. Day)

★ High 23222.75

★ Low 22996.00

★ Close 23017.75

NQ (Week Open) 22860.75

S&P 500

★ **HIGH** - 6299.75

★ **LOW** - 6257.25

★ **Bull Case:** reclaim the 6300 to seek the 6312, 6326, 6333, 6350, 6362, 6377, 6388, 6400, 6412

★ **Bear Case:** seal the 6312 to seek the 6300, 6288, 6277, 6262, 6250, 6233, 6226, 6212, 6200, 6188, 6177, 6162, 6150

ES EXPECTED MOVE

★ High 6319.00

★ Low 6245.00

ES (Prev Day)

★ High 6343.00

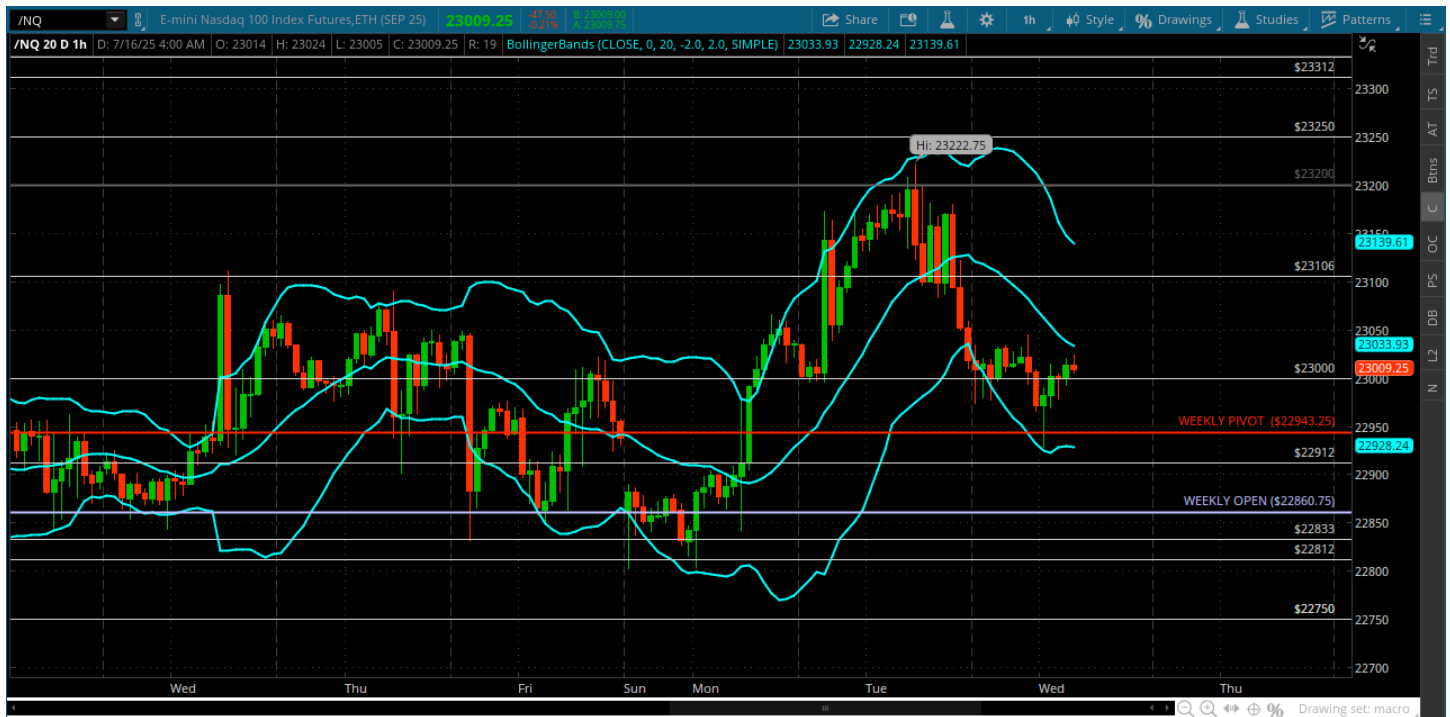
★ Low 6272.50

★ Close 6273.75

ES (Week Open) 6274.00

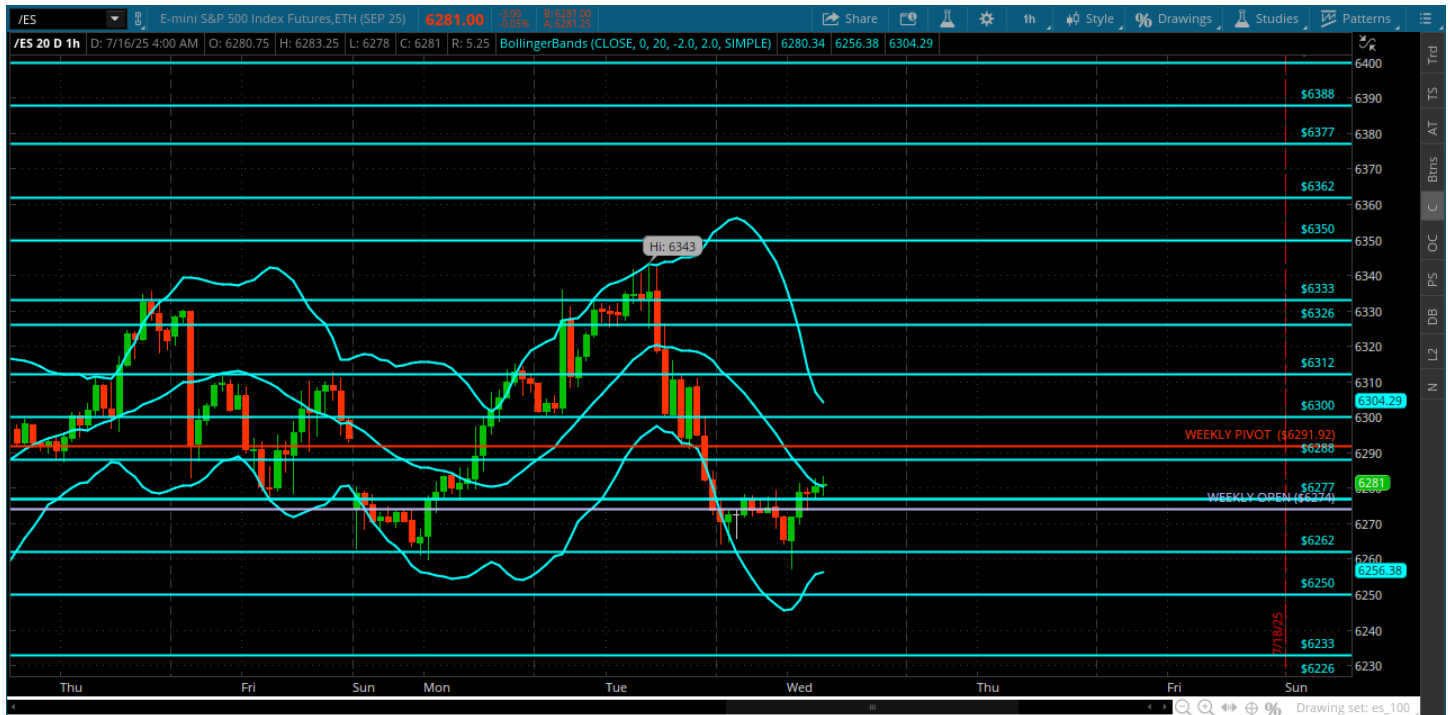
Pre-Market Charts to Watch

Wednesday, July 16, 2025 Pre-Market /NQ 1 Hour Chart



- Nice push back from the new highs and now bears just need under the 23000 and weekly pivot
- Next hurdle for bears is the 22812 - under that can accelerate a larger move
- Bulls are defending the 23000 right now – if they can hold it we will head back to the 23106 where there is a ton of chop

Wednesday, July 16, 2025 Pre-Market /ES 1 Hour Chart



- Nice rejection from the new highs - bears are doing good by staying under the 6300
- Keep the pressure on under the 6288 and we can revisit the 6250
- Bulls can reclaim the tape above 6300 - bears need to keep the pressure on

Disclaimer:

Disclaimer: Neither TheoTrade or any of its officers, directors, employees, other personnel, representatives, agents or independent contractors is, in such capacities, a licensed financial adviser, registered investment adviser, registered broker-dealer or FINRA|SIPC|NFA-member firm. TheoTrade does not provide investment or financial advice or make investment recommendations. TheoTrade is not in the business of transacting trades, nor does TheoTrade agree to direct your brokerage accounts or give trading advice tailored to your particular situation. Nothing contained in our content constitutes a solicitation, recommendation, promotion, or endorsement of any particular security, other investment product, transaction or investment. Trading Futures, Options on Futures, and retail off-exchange foreign currency transactions involves substantial risk of loss and is not suitable for all investors. You should carefully consider whether trading is suitable for you in light of your circumstances, knowledge, and financial resources. You may lose all or more of your initial investment. Opinions, market data, and recommendations are subject to change at any time. Past Performance is not necessarily indicative of future results.