



## *Tony Rago's Pre-Market Playbook*

### ★ Expected Move:

- ES High 6336.50 Low 6269.50
- NQ High 23213.00 Low 22937.00

★ **Bulls** need to hold above yest closes **6300 and 23062 -- long above these**

★ Breakouts are above yesterdays highs **6308 and 23017 - aggressive longs** (await for confirmation with a new high and a retest of the highs from above that holds)

★ **Bears** need under overnight lows **short under 6288 and 22929**

★ Breakdown is below yest lows **6241 and 22835 -- aggressive shorts** (wait for confirmation with a new low and a retest of the lows from below that hold)

★ **RANGEBOUND: 2 Way trade long and shorts will work** to get the day done

★ Keep it simple and be patient for confirmation on either side or establish the range if we are going to be rangebound

★ Confirm rally continuation with sustained trade over the 30min IB High and likewise bearish under the IB Low

### **ECON:**

- 8:30 am Initial jobless claims
- 8:30 am U.S. retail sales
- 8:30 am Import price index
- 8:30 am Philadelphia Fed manufacturing survey
- 10:00 am Business inventories
- 10:00 am Home builder confidence index
- 10:00 am Fed Governor Adriana Kugler speech
- 12:45 pm San Francisco Fed President Daly speaks
- 1:30 pm Fed Governor Lisa Cook speech
- 4:00 PM NFLX reports

## *Pre-Market Trading Levels for today*

---

### GLOBEX

#### NQ

★ **HIGH:** 23151.75

★ **LOW:** 23017.00

★ **Bull Case** defend the 22912 to seek the 23000, 23106, 23250, 23312, 23333, 23412, 23500, 23612

★ **Bear Case** seal the 23250 to seek the 23106, 23000, 22912, 22833, 22812, 22750, 22633, 22612, 22500, 22412, 22333, 22312

#### NQ EXPECTED MOVE

★ High 23213.00

★ Low 22937.00

#### NQ (Prev. Day)

★ High 23100.00

★ Low 22835.50

★ Close 23063.25

**NQ (Week Open) 22860.75**

## S&P 500

★ **HIGH** - 6311.50

★ **LOW** - 6288.25

★ **Bull Case:** reclaim the 6300 to seek the 6312, 6326, 6333, 6350, 6362, 6377, 6388, 6400, 6412

★ **Bear Case:** seal the 6333 to seek the 6300, 6288, 6277, 6262, 6250, 6233, 6226, 6212, 6200, 6188, 6177, 6162, 6150

## ES EXPECTED MOVE

★ High 6336.50

★ Low 6269.50

## ES (Prev Day)

★ High 6308.75

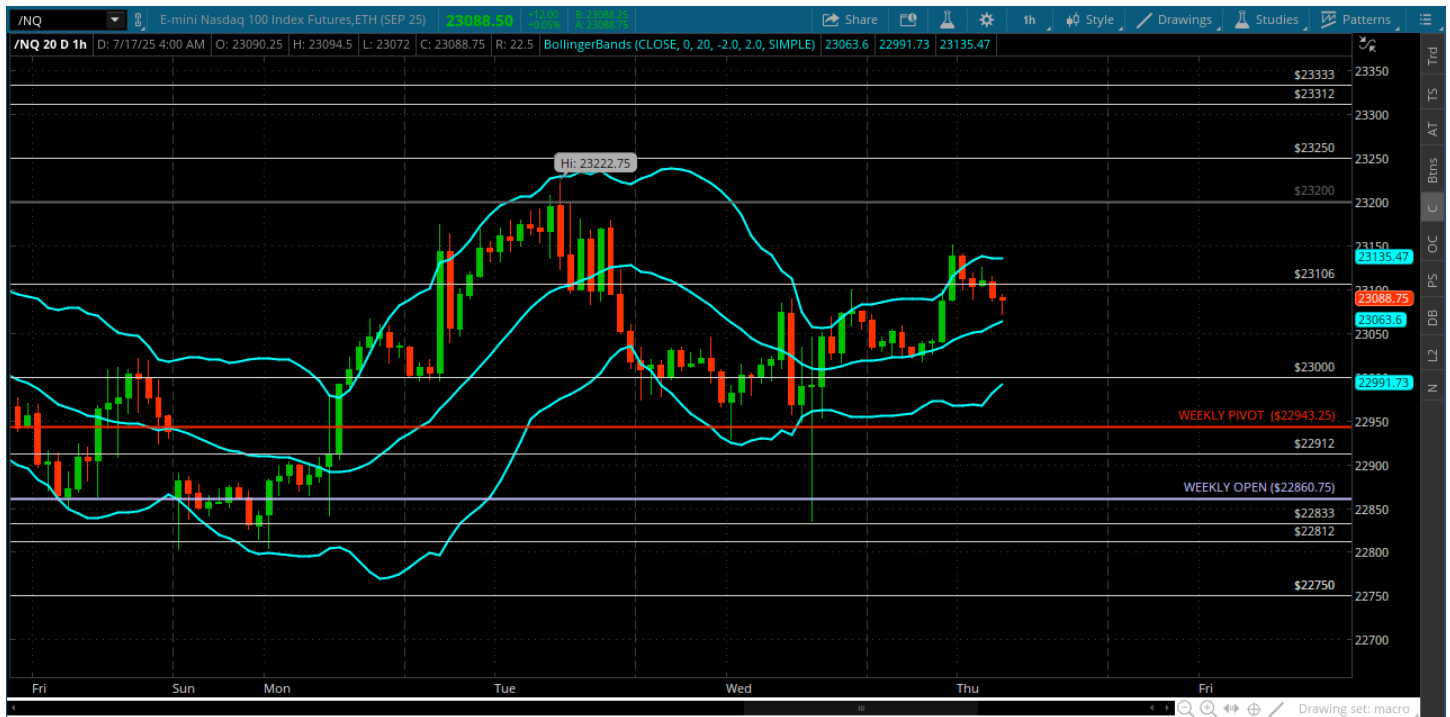
★ Low 6241.00

★ Close 6299.00

**ES (Week Open) 6274.00**

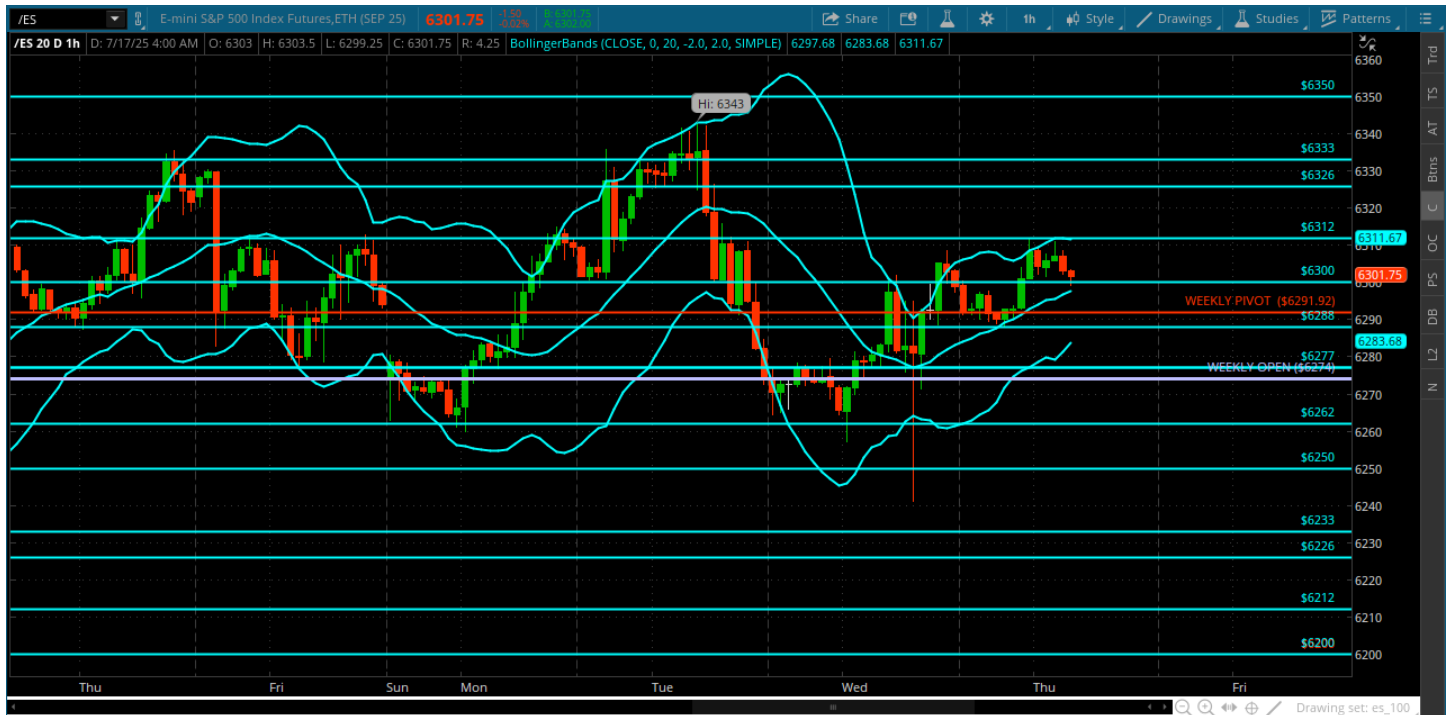
## Pre-Market Charts to Watch

### Thursday, July 17, 2025 Pre-Market /NQ 1 Hour Chart



- Still a relentless bid in this tape but no aggressive buyers to push us to new highs
- Every dip or push down on headlines is quickly scooped up and back into this zone 23000-23106
- Patience will win the day -- stick to you setups and your plan
- Go with price once we break this range

## Thursday, July 17, 2025 Pre-Market /ES 1 Hour Chart



- The fight to hold the roundy continues -- all about the 6300
- A nice move down to the 6250 yesterday and a big reversal back to the 6288, 6300
- Breakout is above the 6312 and 6326
- Breakdown is under the 6250

*Disclaimer:*

Disclaimer: Neither TheoTrade or any of its officers, directors, employees, other personnel, representatives, agents or independent contractors is, in such capacities, a licensed financial adviser, registered investment adviser, registered broker-dealer or FINRA|SIPC|NFA-member firm. TheoTrade does not provide investment or financial advice or make investment recommendations. TheoTrade is not in the business of transacting trades, nor does TheoTrade agree to direct your brokerage accounts or give trading advice tailored to your particular situation. Nothing contained in our content constitutes a solicitation, recommendation, promotion, or endorsement of any particular security, other investment product, transaction or investment. Trading Futures, Options on Futures, and retail off-exchange foreign currency transactions involves substantial risk of loss and is not suitable for all investors. You should carefully consider whether trading is suitable for you in light of your circumstances, knowledge, and financial resources. You may lose all or more of your initial investment. Opinions, market data, and recommendations are subject to change at any time. Past Performance is not necessarily indicative of future results.