



Tony Rago's Pre-Market Playbook

★ Expected Move:

- ES High 6375.75 Low 6308.25
- NQ High 23388.00 Low 23128.00

★ **Bulls** need to hold above yest closes **6342 and 23265 -- long above these**

★ Breakouts are above yesterdays highs **6345 and 23279 - aggressive longs** (await for confirmation with a new high and a retest of the highs from above that holds)

★ **Bears** need under overnight lows **short under 6338.50 and 23245.25**

★ Breakdown is below yest lows **6288 and 23017 -- aggressive shorts** (wait for confirmation with a new low and a retest of the lows from below that hold)

★ **RANGEBOUND: 2 Way trade long and shorts will work** to get the day done

★ Keep it simple and be patient for confirmation on either side or establish the range if we are going to be rangebound

★ Confirm rally continuation with sustained trade over the 30min IB High and likewise bearish under the IB Low

ECON:

- 8:30 am Housing starts
- 8:30 am Building permits
- 10:00 am Consumer sentiment

Pre-Market Trading Levels for today

GLOBEX

NQ

★ **HIGH:** 23309.50

★ **LOW:** 23245.25

★ **Bull Case** defend the 23106 to seek the 23250, 23312, 23333, 23412, 23500, 23612

★ **Bear Case** seal the 23333 to seek the 23312, 23250, 23106, 23000, 22912, 22833, 22812, 22750, 22633, 22612, 22500, 22412, 22333, 22312

NQ EXPECTED MOVE

★ High 23388.00

★ Low 23128.00

NQ (Prev. Day)

★ High 23279.75

★ Low 23017.00

★ Close 23265.50

NQ (Week Open) 22860.75

S&P 500

★ **HIGH** - 6357.00

★ **LOW** - 6338.50

★ **Bull Case:** reclaim the 6326 to seek the 6333, 6350, 6362, 6377, 6388, 6400, 6412, 6426, 6433, 6450

★ **Bear Case:** seal the 6362 to seek the 6350, 6333, 6326, 6312, 6300, 6288, 6277, 6262, 6250, 6233, 6226, 6212, 6200, 6188, 6177, 6162, 6150

ES EXPECTED MOVE

★ High 6375.75

★ Low 6308.25

ES (Prev Day)

★ High 6345.50

★ Low 6288.25

★ Close 6342.25

ES (Week Open) 6274.00

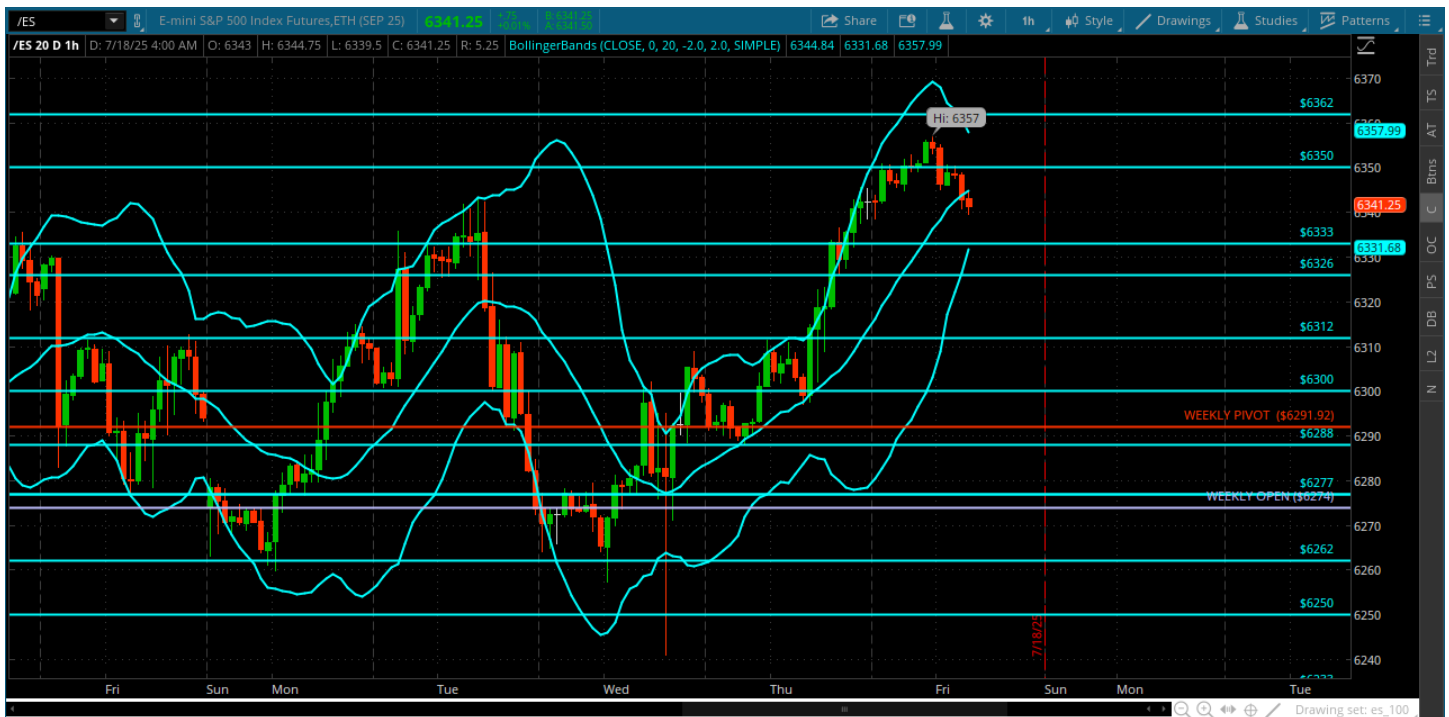
Pre-Market Charts to Watch

Friday, July 18, 2025 Pre-Market /NQ 1 Hour Chart



- More highs into the 23312 -- that needs to get a test proper
- More of the same - very low vol melt with very little “trading” opportunity
- Will be doing little to nothing today to be honest - maybe some scalps
- Friday summer could be extremely quiet but ready for anything

Friday, July 18, 2025 Pre-Market /ES 1 Hour Chart



- New highs into the 6362 - that needs a test proper
- Will be watching the 6350 for clues
- Will look for this to channel in the 6326/6333 area
- Less is more in tapes like this
-

Disclaimer:

Disclaimer: Neither TheoTrade or any of its officers, directors, employees, other personnel, representatives, agents or independent contractors is, in such capacities, a licensed financial adviser, registered investment adviser, registered broker-dealer or FINRA|SIPC|NFA-member firm. TheoTrade does not provide investment or financial advice or make investment recommendations. TheoTrade is not in the business of transacting trades, nor does TheoTrade agree to direct your brokerage accounts or give trading advice tailored to your particular situation. Nothing contained in our content constitutes a solicitation, recommendation, promotion, or endorsement of any particular security, other investment product, transaction or investment. Trading Futures, Options on Futures, and retail off-exchange foreign currency transactions involves substantial risk of loss and is not suitable for all investors. You should carefully consider whether trading is suitable for you in light of your circumstances, knowledge, and financial resources. You may lose all or more of your initial investment. Opinions, market data, and recommendations are subject to change at any time. Past Performance is not necessarily indicative of future results.