



## *Tony Rago's Pre-Market Playbook*

- ★ ES WEEKLY PIVOT 6311.08
- ★ NQ WEEKLY PIVOT 23117.42
- ★ Expected Move:
  - ES High 6366.00 Low 6304.00
  - NQ High 23358.00 Low 23097.00
- ★ **Bulls** need to hold above yest closes **6333 and 23223 -- long above these**
- ★ Breakouts are above yesterdays highs **6357 and 23320 - aggressive longs** (await for confirmation with a new high and a retest of the highs from above that holds)
- ★ **Bears** need under overnight lows **short under 6329 and 23200**
- ★ Breakdown is below yest lows **6288 and 23169 -- aggressive shorts** (wait for confirmation with a new low and a retest of the lows from below that hold)
- ★ **RANGEBOUND: 2 Way trade long and shorts will work** to get the day done
- ★ Keep it simple and be patient for confirmation on either side or establish the range if we are going to be rangebound
- ★ Confirm rally continuation with sustained trade over the 30min IB High and likewise bearish under the IB Low

### **ECON:**

- 10:00 am U.S. leading economic indicators

## *Pre-Market Trading Levels for today*

---

### **GLOBEX**

#### **NQ**

★ **HIGH:** 23308.50

★ **LOW:** 23203.75

★ **Bull Case** defend the 23106 to seek the 23250, 23312, 23333, 23412, 23500, 23612

★ **Bear Case** seal the 23333 to seek the 23312, 23250, 23106, 23000, 22912, 22833, 22812, 22750, 22633, 22612, 22500, 22412, 22333, 22312

#### **NQ EXPECTED MOVE**

★ High 23358.00

★ Low 23097.00

#### **NQ (Prev. Day)**

★ High 23279.75

★ Low 23017.00

★ Close 23265.50

**NQ (Week Open) 23232.50**

## S&P 500

★ **HIGH** - 6354.50

★ **LOW** - 6329.75

★ **Bull Case:** reclaim the 6326 to seek the 6333, 6350, 6362, 6377, 6388, 6400, 6412, 6426, 6433, 6450

★ **Bear Case:** seal the 6362 to seek the 6350, 6333, 6326, 6312, 6300, 6288, 6277, 6262, 6250, 6233, 6226, 6212, 6200, 6188, 6177, 6162, 6150

## ES EXPECTED MOVE

★ High 6366.00

★ Low 6304.00

## ES (Prev Day)

★ High 6357.00

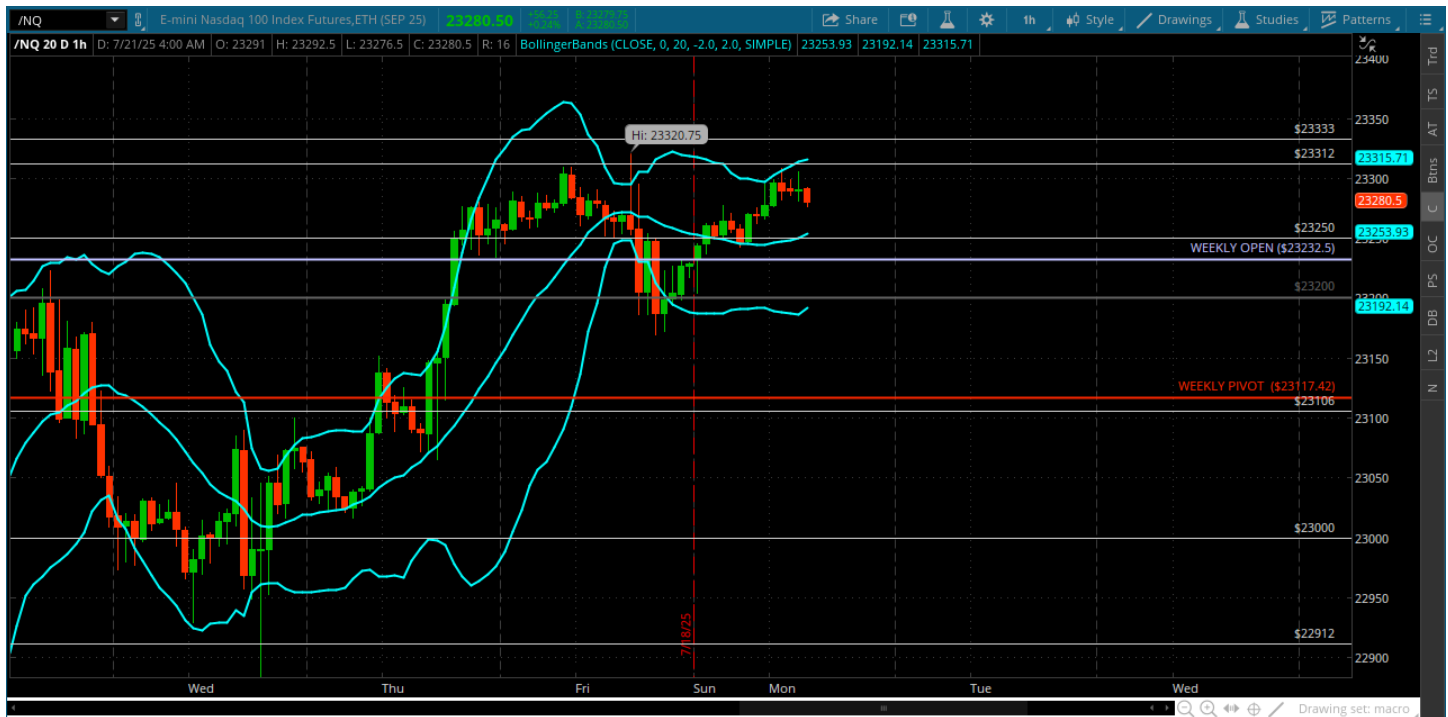
★ Low 6223.50

★ Close 6335.25

**ES (Week Open) 6335.75**

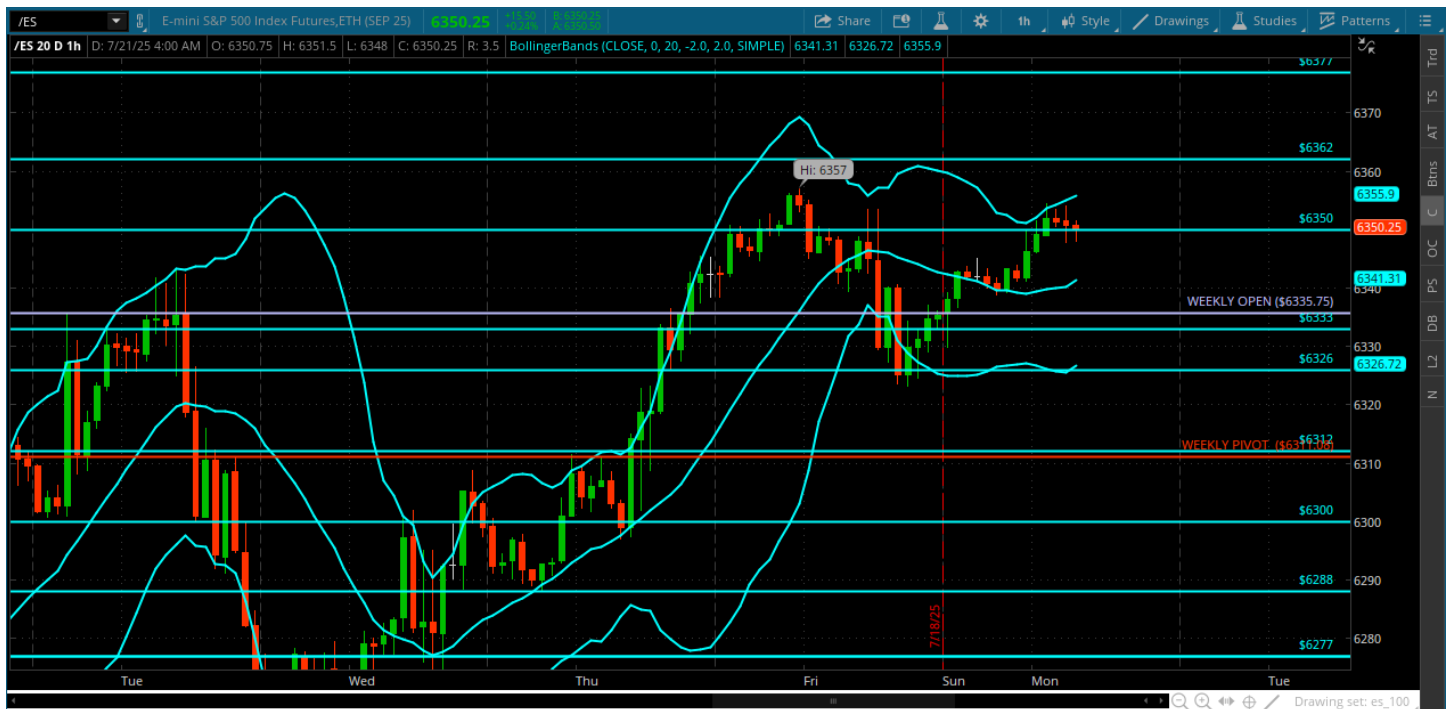
## Pre-Market Charts to Watch

### Monday, July 21, 2025 Pre-Market /NQ 1 Hour Chart



- There is a case for a test of the weekly pivot here
- Price needs under the weekly open and below the 23200 and we will go get it
- Could be another slow day – big earnings mid-week so tape may be waiting on those
- Lets trade what we see

## Monday, July 21, 2025 Pre-Market /ES 1 Hour Chart



- 6362 - that still needs a test proper
- Will be watching the 6333 and the weekly open for clues
- Will look for this to channel in the 6326/6333 area
- Could be another slow tape

*Disclaimer:*

Disclaimer: Neither TheoTrade or any of its officers, directors, employees, other personnel, representatives, agents or independent contractors is, in such capacities, a licensed financial adviser, registered investment adviser, registered broker-dealer or FINRA|SIPC|NFA-member firm. TheoTrade does not provide investment or financial advice or make investment recommendations. TheoTrade is not in the business of transacting trades, nor does TheoTrade agree to direct your brokerage accounts or give trading advice tailored to your particular situation. Nothing contained in our content constitutes a solicitation, recommendation, promotion, or endorsement of any particular security, other investment product, transaction or investment. Trading Futures, Options on Futures, and retail off-exchange foreign currency transactions involves substantial risk of loss and is not suitable for all investors. You should carefully consider whether trading is suitable for you in light of your circumstances, knowledge, and financial resources. You may lose all or more of your initial investment. Opinions, market data, and recommendations are subject to change at any time. Past Performance is not necessarily indicative of future results.