



Tony Rago's Pre-Market Playbook

★ Expected Move:

- ES High 6372.00 Low 6319.00
- NQ High 23338.00 Low 23107.00

★ **Bulls** need to hold above yest closes **6348 and 23200 -- long above these**

★ Breakouts are above yesterdays highs **6353 and 23367 - aggressive longs** (await for confirmation with a new high and a retest of the highs from above that holds)

★ **Bears** need under overnight lows **short under 6342 and 23170**

★ Breakdown is below yest lows **6318 and 23108 -- aggressive shorts** (wait for confirmation with a new low and a retest of the lows from below that hold)

★ **RANGEBOUND: 2 Way trade long and shorts will work** to get the day done

★ Keep it simple and be patient for confirmation on either side or establish the range if we are going to be rangebound

★ Confirm rally continuation with sustained trade over the 30min IB High and likewise bearish under the IB Low

ECON:

- 10:00 am Existing home sales
- 10:30 am Crude inventories
- 4:00 pm TSLA Reports
- 4:00 pm GOOGL Reports

Pre-Market Trading Levels for today

GLOBEX

NQ

★ **HIGH:** 23283.75

★ **LOW:** 23170.25

★ **Bull Case** defend the 23106 to seek the 23250, 23312, 23333, 23412, 23500, 23612

★ **Bear Case** seal the 23412 to seek the 23333, 23312, 23250, 23106, 23000, 22912, 22833, 22812, 22750, 22633, 22612, 22500, 22412, 22333, 22312

NQ EXPECTED MOVE

★ High 23338.00

★ Low 23108.00

NQ (Prev. Day)

★ High 23367.00

★ Low 23108.00

★ Close 23199.00

NQ (Week Open) 23232.50

S&P 500

★ **HIGH** - 6374.25

★ **LOW** - 6342.75

★ **Bull Case:** reclaim the 6350 to seek the 6362, 6377, 6388, 6400, 6412, 6426, 6433, 6450

★ **Bear Case:** seal the 6388 to seek the 6377, 6362, 6350, 6333, 6326, 6312, 6300, 6288, 6277, 6262, 6250, 6233, 6226, 6212, 6200, 6188, 6177, 6162, 6150

ES EXPECTED MOVE

★ High 6372.00

★ Low 6319.00

ES (Prev Day)

★ High 6353.75

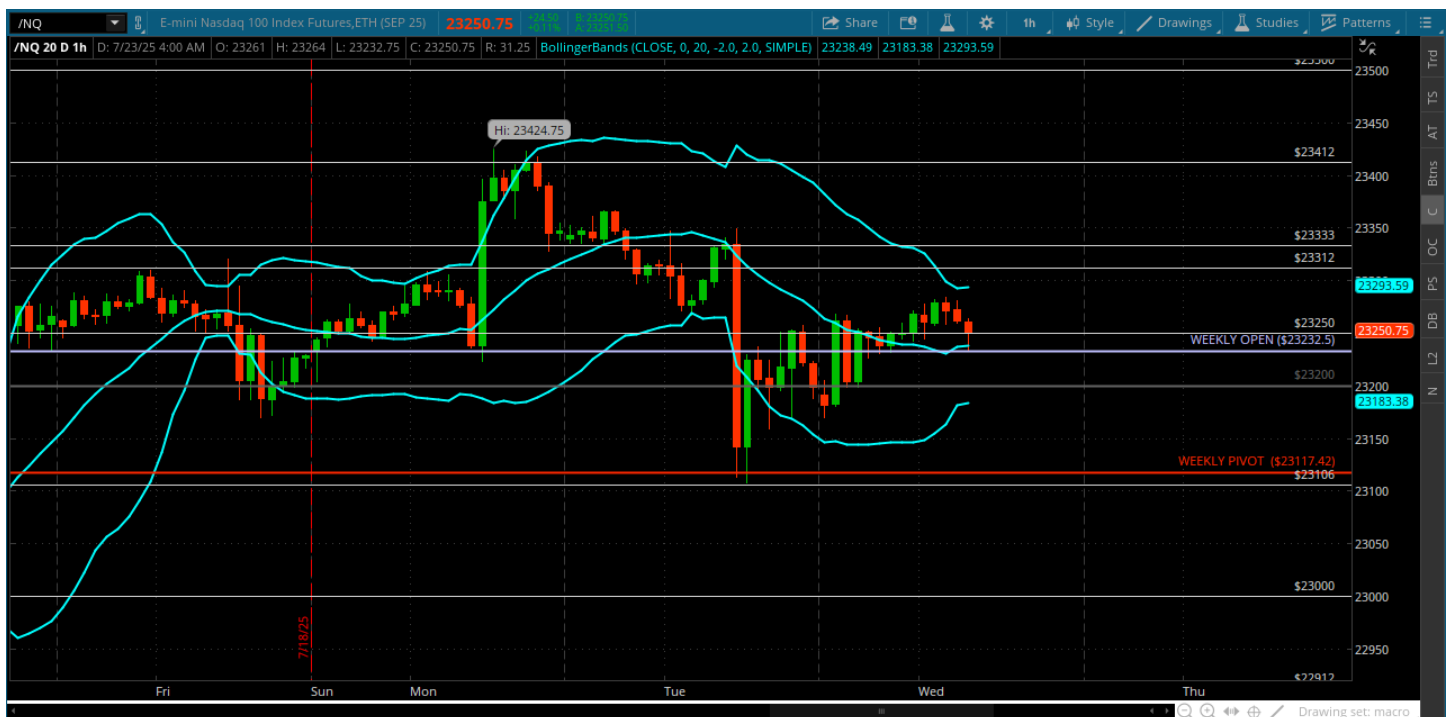
★ Low 6318.75

★ Close 6347.25

ES (Week Open) 6335.75

Pre-Market Charts to Watch

Wednesday, July 23, 2025 Pre-Market /NQ 1 Hour Chart



- Found some weakness yesterday and completed the move to the weekly pivot
- Now its all about holding above the weekly open and making a move back to the 23333 for the bulls
- Bears need to keep some pressure on and get under the 23250 and go after 23106

Wednesday, July 23, 2025 Pre-Market /ES 1 Hour Chart



- 6377 still open for a test -- ES much stronger than the NQ at the moment
- The more we linger above the 6362 the more the 6400 has potential to get a test
- Bears have no answer for this yet and bulls are completely complacent

Disclaimer:

Disclaimer: Neither TheoTrade or any of its officers, directors, employees, other personnel, representatives, agents or independent contractors is, in such capacities, a licensed financial adviser, registered investment adviser, registered broker-dealer or FINRA|SIPC|NFA-member firm. TheoTrade does not provide investment or financial advice or make investment recommendations. TheoTrade is not in the business of transacting trades, nor does TheoTrade agree to direct your brokerage accounts or give trading advice tailored to your particular situation. Nothing contained in our content constitutes a solicitation, recommendation, promotion, or endorsement of any particular security, other investment product, transaction or investment. Trading Futures, Options on Futures, and retail off-exchange foreign currency transactions involves substantial risk of loss and is not suitable for all investors. You should carefully consider whether trading is suitable for you in light of your circumstances, knowledge, and financial resources. You may lose all or more of your initial investment. Opinions, market data, and recommendations are subject to change at any time. Past Performance is not necessarily indicative of future results.