



Tony Rago's Pre-Market Playbook

★ Expected Move:

- ES High 6431.00 Low 6367.00
- NQ High 23496.00 Low 23152.00

★ **Bulls** need to hold above yest closes **6405 and 23411 -- long above these**

★ Breakouts are above yesterdays highs **6407.25 and 23418 - aggressive longs** (await for confirmation with a new high and a retest of the highs from above that holds)

★ **Bears** need under overnight lows **short under 6393 and 23346**

★ Breakdown is below yest lows **6342 and 23146 -- aggressive shorts** (wait for confirmation with a new low and a retest of the lows from below that hold)

★ **RANGEBOUND: 2 Way trade long and shorts will work** to get the day done

★ Keep it simple and be patient for confirmation on either side or establish the range if we are going to be rangebound

★ Confirm rally continuation with sustained trade over the 30min IB High and likewise bearish under the IB Low

ECON:

- 8:30 am Initial jobless claims
- 9:45 am S&P flash U.S. services PMI
- 10:00 am New home sales

Pre-Market Trading Levels for today

GLOBEX

NQ

★ **HIGH:** 23422.75

★ **LOW:** 23346.75

★ **Bull Case** defend the 23250 to seek the 23312, 23333, 23412, 23500, 23612, 23633, 23750, 23812, 23833, 23912, 24000

★ **Bear Case** seal the 23500 to seek the 23412, 23333, 23312, 23250, 23106, 23000, 22912, 22833, 22812, 22750, 22633, 22612, 22500, 22412, 22333, 22312

NQ EXPECTED MOVE

★ High 23496.00

★ Low 23152.00

NQ (Prev. Day)

★ High 23418.00

★ Low 23146.75

★ Close 23411.25

NQ (Week Open) 23232.50

S&P 500

★ **HIGH** - 6406.75

★ **LOW** - 6393.50

★ **Bull Case:** reclaim the 6362 to seek the 6377, 6388, 6400, 6412, 6426, 6433, 6450

★ **Bear Case:** seal the 6412 to seek the 6400, 6388, 6377, 6362, 6350, 6333, 6326, 6312, 6300, 6288, 6277, 6262, 6250, 6233

ES EXPECTED MOVE

★ High 6431.00

★ Low 6367.00

ES (Prev Day)

★ High 6407.25

★ Low 6342.75

★ Close 6405.75

ES (Week Open) 6335.75

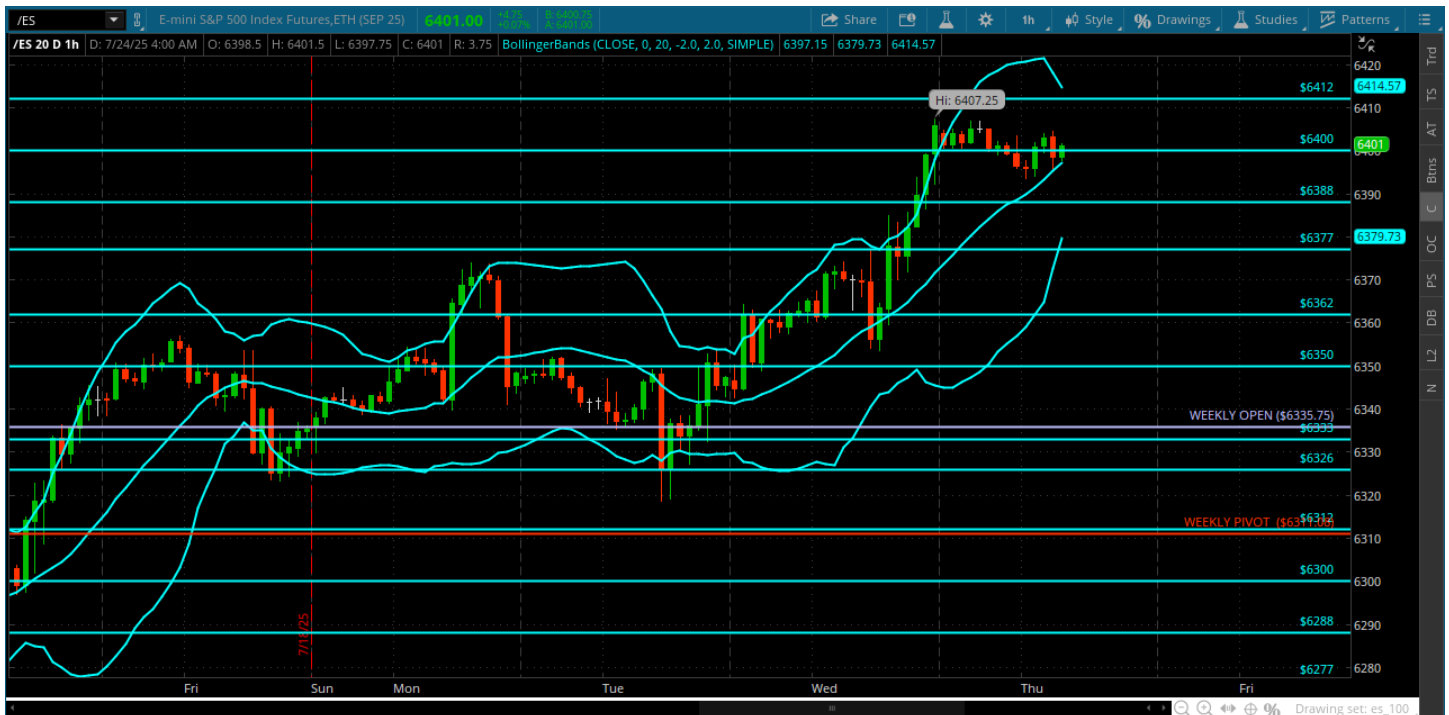
Pre-Market Charts to Watch

Thursday, July 24, 2025 Pre-Market /NQ 1 Hour Chart



- TSLA and GOOGL reported yesterday - TSLA is down pre-market and GOOGL is up
- Price on NQ is right back to the 23412 -- need to bust thru and make a move to the 23500
- Lets see how retail reacts to those earnings -- NQ still seems weaker than ES

Thursday, July 24, 2025 Pre-Market /ES 1 Hour Chart



- ES achieves a new high and the 6400 prints!
- 6412 is open for a test -- dips continue to get scooped up
- The tape is just pushing to new highs everyday and it is a very quiet trade
- Too quiet in my opinion but until VIX can get off the floor this is the market we have
- Lets see how we open -- ES is leading everything

Disclaimer:

Disclaimer: Neither TheoTrade or any of its officers, directors, employees, other personnel, representatives, agents or independent contractors is, in such capacities, a licensed financial adviser, registered investment adviser, registered broker-dealer or FINRA|SIPC|NFA-member firm. TheoTrade does not provide investment or financial advice or make investment recommendations. TheoTrade is not in the business of transacting trades, nor does TheoTrade agree to direct your brokerage accounts or give trading advice tailored to your particular situation. Nothing contained in our content constitutes a solicitation, recommendation, promotion, or endorsement of any particular security, other investment product, transaction or investment. Trading Futures, Options on Futures, and retail off-exchange foreign currency transactions involves substantial risk of loss and is not suitable for all investors. You should carefully consider whether trading is suitable for you in light of your circumstances, knowledge, and financial resources. You may lose all or more of your initial investment. Opinions, market data, and recommendations are subject to change at any time. Past Performance is not necessarily indicative of future results.