



## *Tony Rago's Pre-Market Playbook*

### ★ Expected Move:

- ES High 6433.00 Low 6371.00
- NQ High 23515.00 Low 23239.00

★ **Bulls** need to hold above yest closes **6406 and 23395 -- long above these**

★ Breakouts are above yesterdays highs **6418 and 23424 - aggressive longs** (await for confirmation with a new high and a retest of the highs from above that holds)

★ **Bears** need under overnight lows **short under 6401 and 23348**

★ Breakdown is below yest lows **6406 and 23298 -- aggressive shorts** (wait for confirmation with a new low and a retest of the lows from below that hold)

★ **RANGEBOUND: 2 Way trade long and shorts will work** to get the day done

★ Keep it simple and be patient for confirmation on either side or establish the range if we are going to be rangebound

★ Confirm rally continuation with sustained trade over the 30min IB High and likewise bearish under the IB Low

### **ECON:**

- 8:30 am Durable-goods orders

## *Pre-Market Trading Levels for today*

---

### GLOBEX

#### NQ

★ **HIGH:** 23441.75

★ **LOW:** 23348.75

★ **Bull Case** defend the 23250 to seek the 23312, 23333, 23412, 23500, 23612, 23633, 23750, 23812, 23833, 23912, 24000

★ **Bear Case** seal the 23500 to seek the 23412, 23333, 23312, 23250, 23106, 23000, 22912, 22833, 22812, 22750, 22633, 22612, 22500, 22412, 22333, 22312

#### NQ EXPECTED MOVE

★ High 23515.00

★ Low 23239.00

#### NQ (Prev. Day)

★ High 23424.50

★ Low 23298.25

★ Close 23395.00

**NQ (Week Open) 23232.50**

## S&P 500

★ **HIGH** - 6421.25

★ **LOW** - 6401.00

★ **Bull Case:** reclaim the 6377 to seek the 6388, 6400, 6412, 6426, 6433, 6450

★ **Bear Case:** seal the 6412 to seek the 6400, 6388, 6377, 6362, 6350, 6333, 6326, 6312, 6300, 6288, 6277, 6262, 6250, 6233

## ES EXPECTED MOVE

★ High 6433.00

★ Low 63717.00

## ES (Prev Day)

★ High 6418.25

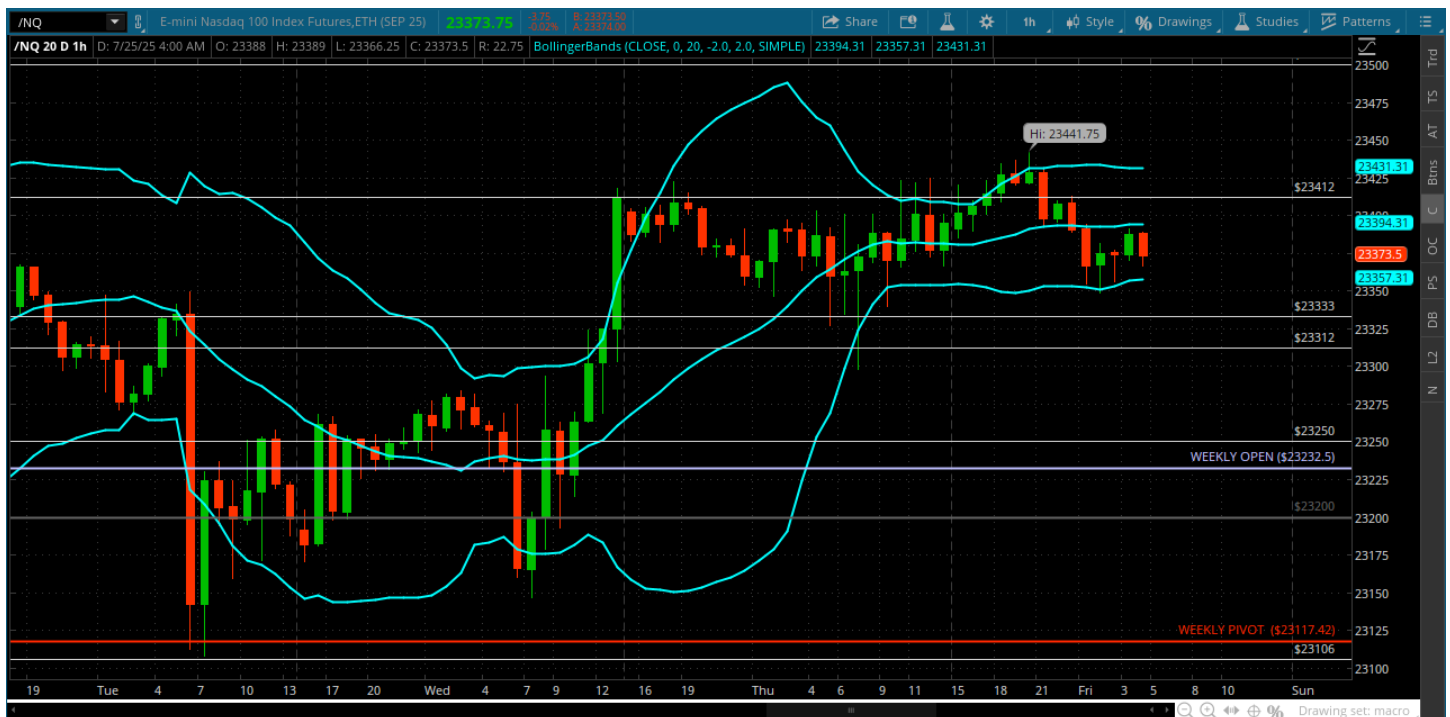
★ Low 6391.50

★ Close 6406.50

**ES (Week Open) 6335.75**

## Pre-Market Charts to Watch

### Friday, July 25, 2025 Pre-Market /NQ 1 Hour Chart



- New marginal high and price is still just drifting with no volatility and very light volume
- Above the 23412 seeks the 23500 so bulls would need above that or defend the 23333 and get back above it
- Bears can get something going under the 23312

## Thursday, July 24, 2025 Pre-Market /ES 1 Hour Chart



- ES achieves a new high - market continues to grind higher with zero volatility
- Summer tape action
- Bulls need to defend the pullbacks and close today over the 6400

*Disclaimer:*

Disclaimer: Neither TheoTrade or any of its officers, directors, employees, other personnel, representatives, agents or independent contractors is, in such capacities, a licensed financial adviser, registered investment adviser, registered broker-dealer or FINRA|SIPC|NFA-member firm. TheoTrade does not provide investment or financial advice or make investment recommendations. TheoTrade is not in the business of transacting trades, nor does TheoTrade agree to direct your brokerage accounts or give trading advice tailored to your particular situation. Nothing contained in our content constitutes a solicitation, recommendation, promotion, or endorsement of any particular security, other investment product, transaction or investment. Trading Futures, Options on Futures, and retail off-exchange foreign currency transactions involves substantial risk of loss and is not suitable for all investors. You should carefully consider whether trading is suitable for you in light of your circumstances, knowledge, and financial resources. You may lose all or more of your initial investment. Opinions, market data, and recommendations are subject to change at any time. Past Performance is not necessarily indicative of future results.