



Tony Rago's Pre-Market Playbook

- ★ ES WEEKLY PIVOT 6392.67
- ★ NQ WEEKLY PIVOT 23343.92
- ★ Expected Move:
 - ES High 6452.70 Low 6394.70
 - NQ High 23549.00 Low 23297.00
- ★ **Bulls** need to hold above yest closes **6428 and 23447 -- long above these**
- ★ Breakouts are above yesterdays highs **6431 and 23476 - aggressive longs** (await for confirmation with a new high and a retest of the highs from above that holds)
- ★ **Bears** need under overnight lows **short under 6433 and 23484**
- ★ Breakdown is below yest lows **6401 and 23330 -- aggressive shorts** (wait for confirmation with a new low and a retest of the lows from below that hold)
- ★ **RANGEBOUND: 2 Way trade long and shorts will work** to get the day done
- ★ Keep it simple and be patient for confirmation on either side or establish the range if we are going to be rangebound
- ★ Confirm rally continuation with sustained trade over the 30min IB High and likewise bearish under the IB Low

ECON:

- n/a

Pre-Market Trading Levels for today

GLOBEX

NQ

★ **HIGH:** 23585.25

★ **LOW:** 23484.75

★ **Bull Case** defend the 23333 to seek the 23412, 23500, 23612, 23633, 23750, 23812, 23833, 23912, 24000

★ **Bear Case** seal the 23612 to seek the 23500, 23412, 23333, 23312, 23250, 23106, 23000, 22912, 22833, 22812, 22750, 22633, 22612, 22500, 22412, 22333, 22312

NQ EXPECTED MOVE

★ High 23549.00

★ Low 23297.00

NQ (Prev. Day)

★ High 23476.00

★ Low 23330.75

★ Close 23447.75

NQ (Week Open) 23520.00

S&P 500

★ **HIGH** - 6457.75

★ **LOW** - 6433.25

★ **Bull Case:** reclaim the 6412 to seek the 6426, 6433, 6450, 6462, 6477, 6488, 6500, 6512

★ **Bear Case:** seal the 6450 to seek the 6433, 6426, 6412, 6400, 6388, 6377, 6362, 6350, 6333, 6326, 6312, 6300, 6288, 6277, 6262, 6250, 6233

ES EXPECTED MOVE

★ High 6452.70

★ Low 6394.70

ES (Prev Day)

★ High 6431.00

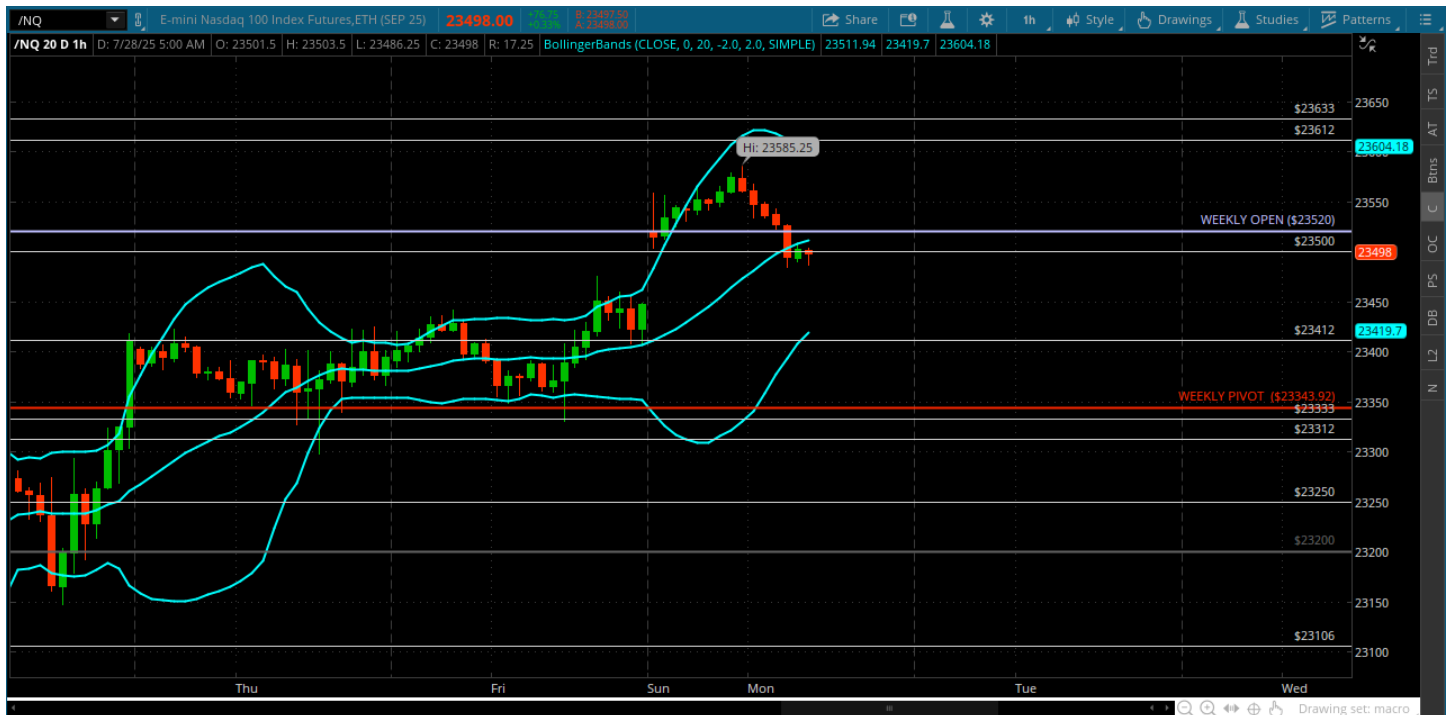
★ Low 6401.00

★ Close 6428.25

ES (Week Open) 6450.00

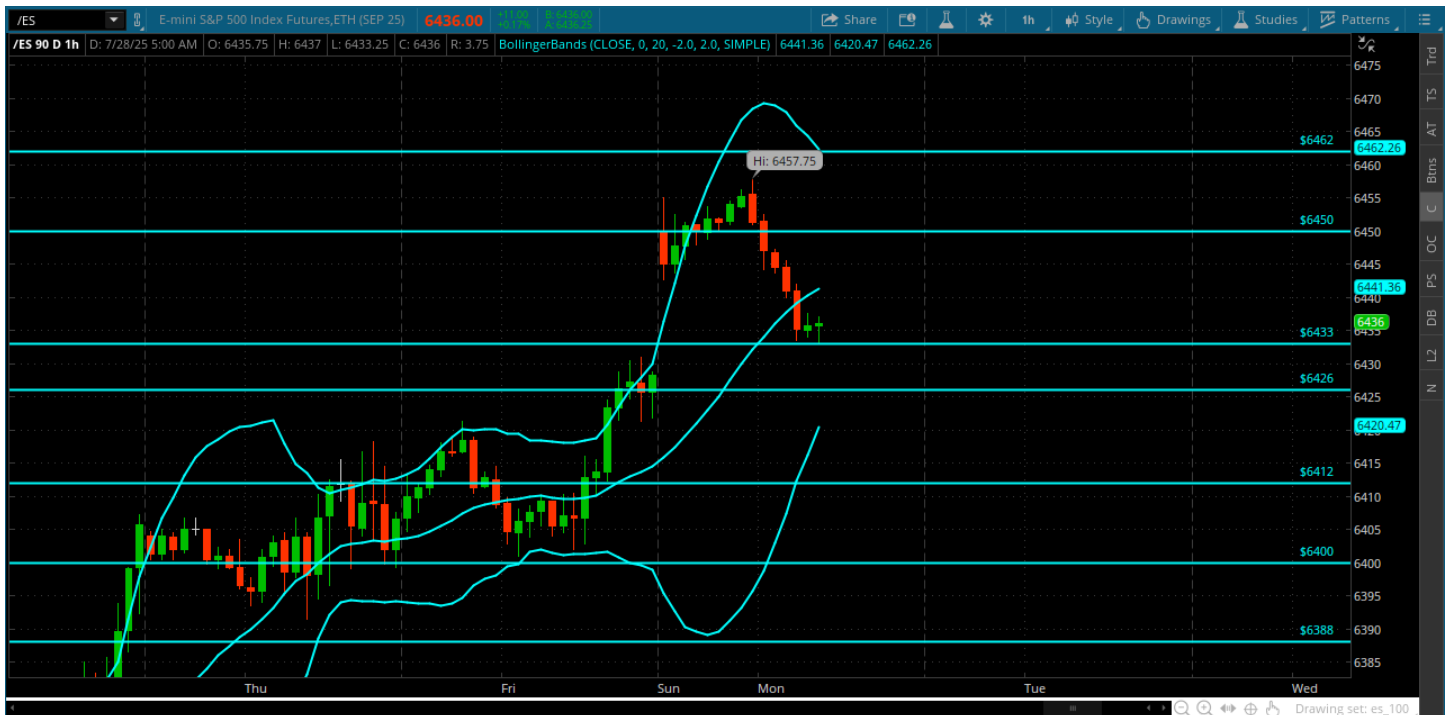
Pre-Market Charts to Watch

Monday, July 28, 2025 Pre-Market /NQ 1 Hour Chart



- New highs on tariff news 23500 has been achieved and the 23612 is now open for a test if 23412 holds
- Aggressive longs are above the weekly open.
- Bears need a headline and a miracle -- under the weekly pivot can create a pullback

Friday, July 28, 2025 Pre-Market /ES 1 Hour Chart



- ES achieves a new high -- now all about staying above the 6400 for the bulls.
- Resistance at the 6450 until its not
- Lets see how the cash session reacts to the latest tariff news that created the gap up last night

Disclaimer:

Disclaimer: Neither TheoTrade or any of its officers, directors, employees, other personnel, representatives, agents or independent contractors is, in such capacities, a licensed financial adviser, registered investment adviser, registered broker-dealer or FINRA|SIPC|NFA-member firm. TheoTrade does not provide investment or financial advice or make investment recommendations. TheoTrade is not in the business of transacting trades, nor does TheoTrade agree to direct your brokerage accounts or give trading advice tailored to your particular situation. Nothing contained in our content constitutes a solicitation, recommendation, promotion, or endorsement of any particular security, other investment product, transaction or investment. Trading Futures, Options on Futures, and retail off-exchange foreign currency transactions involves substantial risk of loss and is not suitable for all investors. You should carefully consider whether trading is suitable for you in light of your circumstances, knowledge, and financial resources. You may lose all or more of your initial investment. Opinions, market data, and recommendations are subject to change at any time. Past Performance is not necessarily indicative of future results.