



Tony Rago's Pre-Market Playbook

★ Expected Move:

- ES High **6452.70** Low **6394.70**
- NQ High **23549.00** Low **23297.00**

★ **Bulls** need to hold above yest closes **6424** and **23585** -- long above these

★ Breakouts are above yesterdays highs **6457** and **23476** - **aggressive longs** (await for confirmation with a new high and a retest of the highs from above that holds

★ **Bears** need under overnight lows **short under 6423** and **23503**

★ Breakdown is below yest lows **6408** and **23436** -- **aggressive shorts** (wait for confirmation with a new low and a retest of the lows from below that hold)

★ **RANGEBOUND: 2 Way trade long and shorts will work** to get the day done

★ Keep it simple and be patient for confirmation on either side or establish the range if we are going to be rangebound

★ Confirm rally continuation with sustained trade over the 30min IB High and likewise bearish under the IB Low

ECON:

- 8:30 am Advanced U.S. trade balance in goods
- 8:30 am Advanced retail inventories
- 8:30 am Advanced wholesale inventories
- 9:00 am S&P Case-Shiller home price index
- 10:00 am Consumer confidence
- 10:00 am Job openings

Pre-Market Trading Levels for today

GLOBEX

NQ

★ **HIGH:** 23609.00

★ **LOW:** 23503.00

★ **Bull Case** defend the 23500 to seek the 23612, 23633, 23750, 23812, 23833, 23912, 24000

★ **Bear Case** seal the 23612 to seek the 23500, 23412, 23333, 23312, 23250, 23106, 23000, 22912, 22833, 22812, 22750, 22633, 22612, 22500, 22412, 22333, 22312

NQ EXPECTED MOVE

★ High 23617.00

★ Low 23365.00

NQ (Prev. Day)

★ High 23585.25

★ Low 23436.75

★ Close 23509.25

NQ (Week Open) 23520.00

S&P 500

★ **HIGH** - 6442.50

★ **LOW** - 6423.25

★ **Bull Case:** defend the 6412 to seek the 6426, 6433, 6450, 6462, 6477, 6488, 6500, 6512

★ **Bear Case:** seal the 6450 to seek the 6433, 6426, 6412, 6400, 6388, 6377, 6362, 6350, 6333, 6326, 6312, 6300, 6288, 6277, 6262, 6250, 6233

ES EXPECTED MOVE

★ High 6448.50

★ Low 6397.50

ES (Prev Day)

★ High 6457.75

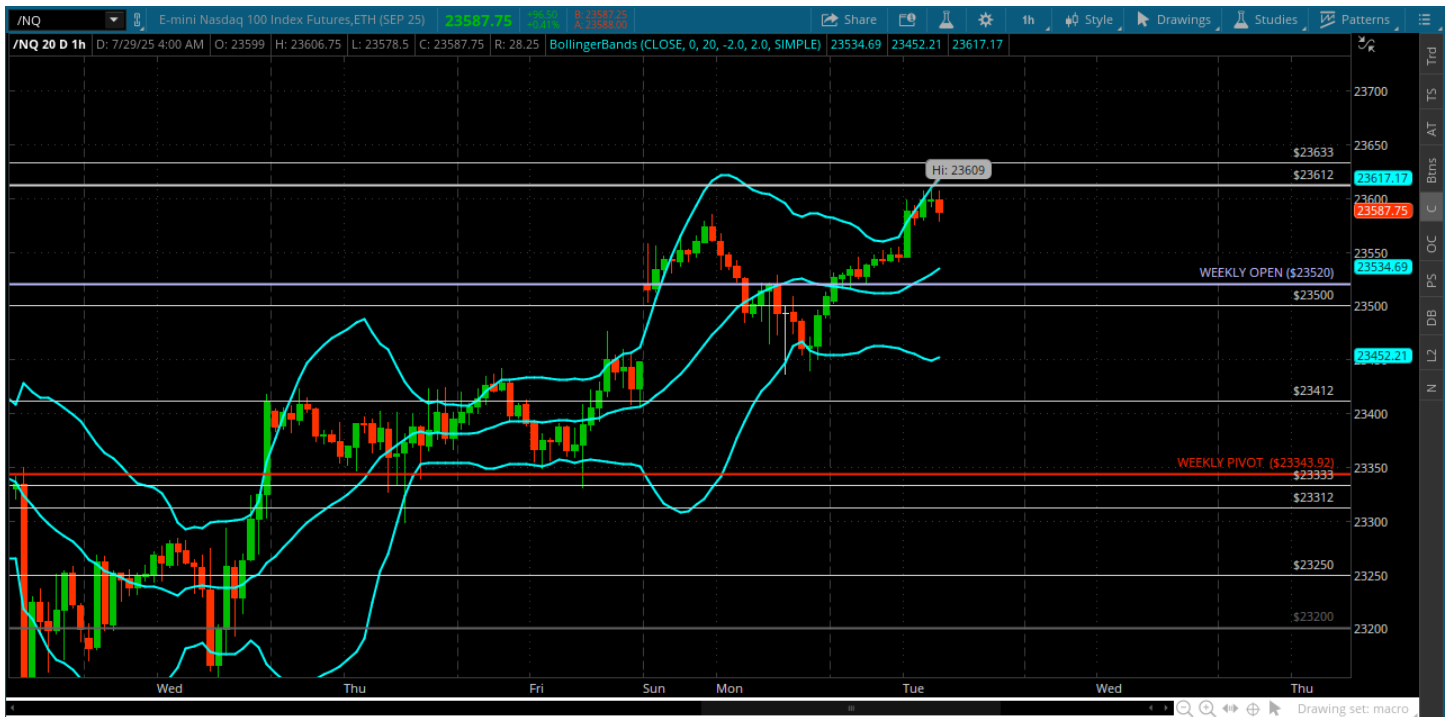
★ Low 6408.75

★ Close 6424.50

ES (Week Open) 6450.00

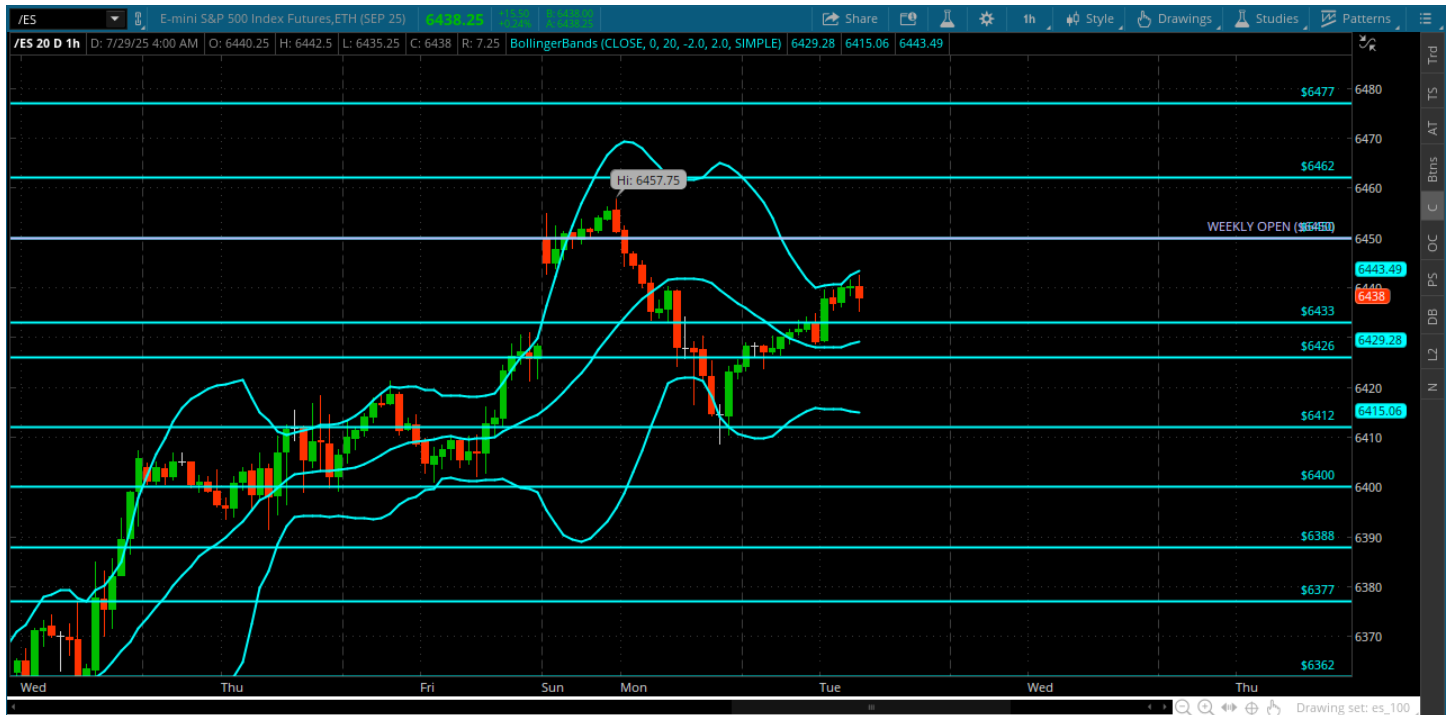
Pre-Market Charts to Watch

Tuesday, July 29, 2025 Pre-Market /NQ 1 Hour Chart



- Quiet summer tape drifting up and down with no vol and low participation
- Looking for a test of the 23612 to complete the move here
- Still keeping it light - expecting vol to return to the tape with earnings, FOMC and Aug 1 tariff deadline

Monday, July 29, 2025 Pre-Market /ES 1 Hour Chart



- ES showed some weakness yesterday and just dripped down to the 6412 where buyers took over and brought us back above 6433
- Bears still have slight advantage under the weekly open 6450
- Expecting another quiet day today but will look for a retest of the 6400 under the 6426

Disclaimer:

Disclaimer: Neither TheoTrade or any of its officers, directors, employees, other personnel, representatives, agents or independent contractors is, in such capacities, a licensed financial adviser, registered investment adviser, registered broker-dealer or FINRA|SIPC|NFA-member firm. TheoTrade does not provide investment or financial advice or make investment recommendations. TheoTrade is not in the business of transacting trades, nor does TheoTrade agree to direct your brokerage accounts or give trading advice tailored to your particular situation. Nothing contained in our content constitutes a solicitation, recommendation, promotion, or endorsement of any particular security, other investment product, transaction or investment. Trading Futures, Options on Futures, and retail off-exchange foreign currency transactions involves substantial risk of loss and is not suitable for all investors. You should carefully consider whether trading is suitable for you in light of your circumstances, knowledge, and financial resources. You may lose all or more of your initial investment. Opinions, market data, and recommendations are subject to change at any time. Past Performance is not necessarily indicative of future results.