



Tony Rago's Pre-Market Playbook

★ Expected Move:

- ES High 6446.00 Low 6366.00
- NQ High 23621.00 Low 23293.00

★ **Bulls** need to hold above yest closes **6403 and 23452 -- long above these**

★ Breakouts are above yesterdays highs **6442 and 23652 - aggressive longs** (await for confirmation with a new high and a retest of the highs from above that holds)

★ **Bears** need under overnight lows **short under 6403 and 23449**

★ Breakdown is below yest lows **6396 and 23421 -- aggressive shorts** (wait for confirmation with a new low and a retest of the lows from below that hold)

★ **RANGEBOUND: 2 Way trade long and shorts will work** to get the day done

★ Keep it simple and be patient for confirmation on either side or establish the range if we are going to be rangebound

★ Confirm rally continuation with sustained trade over the 30min IB High and likewise bearish under the IB Low

ECON:

- 8:15 am ADP employment
- 8:30 am GDP Q2
- 10:00 am Pending home sales
- 2:00 pm FOMC interest-rate decision
- 2:30 pm Fed Chair Powell press conference
- 4:00 pm META Reports
- 4:00 pm MSFT Reports

Pre-Market Trading Levels for today

GLOBEX

NQ

★ **HIGH:** 23522.00

★ **LOW:** 23449.25

★ **Bull Case** defend the 23412 to seek the 23500, 23612, 23633, 23750, 23812, 23833, 23912, 24000

★ **Bear Case** seal the 23612 to seek the 23500, 23412, 23333, 23312, 23250, 23106, 23000, 22912, 22833, 22812, 22750, 22633, 22612, 22500, 22412, 22333, 22312

NQ EXPECTED MOVE

★ High 23621.00

★ Low 23293.00

NQ (Prev. Day)

★ High 23652.50

★ Low 23421.25

★ Close 23452.00

NQ (Week Open) 23520.00

S&P 500

★ **HIGH** - 6417.50

★ **LOW** - 6403.25

★ **Bull Case:** defend the 6388 to seek the 6400, 6412, 6426, 6433, 6450, 6462, 6477, 6488, 6500, 6512

★ **Bear Case:** seal the 6433 to seek the 6426, 6412, 6400, 6388, 6377, 6362, 6350, 6333, 6326, 6312, 6300, 6288, 6277, 6262, 6250, 6233

ES EXPECTED MOVE

★ High 6446.00

★ Low 6366.00

ES (Prev Day)

★ High 6442.50

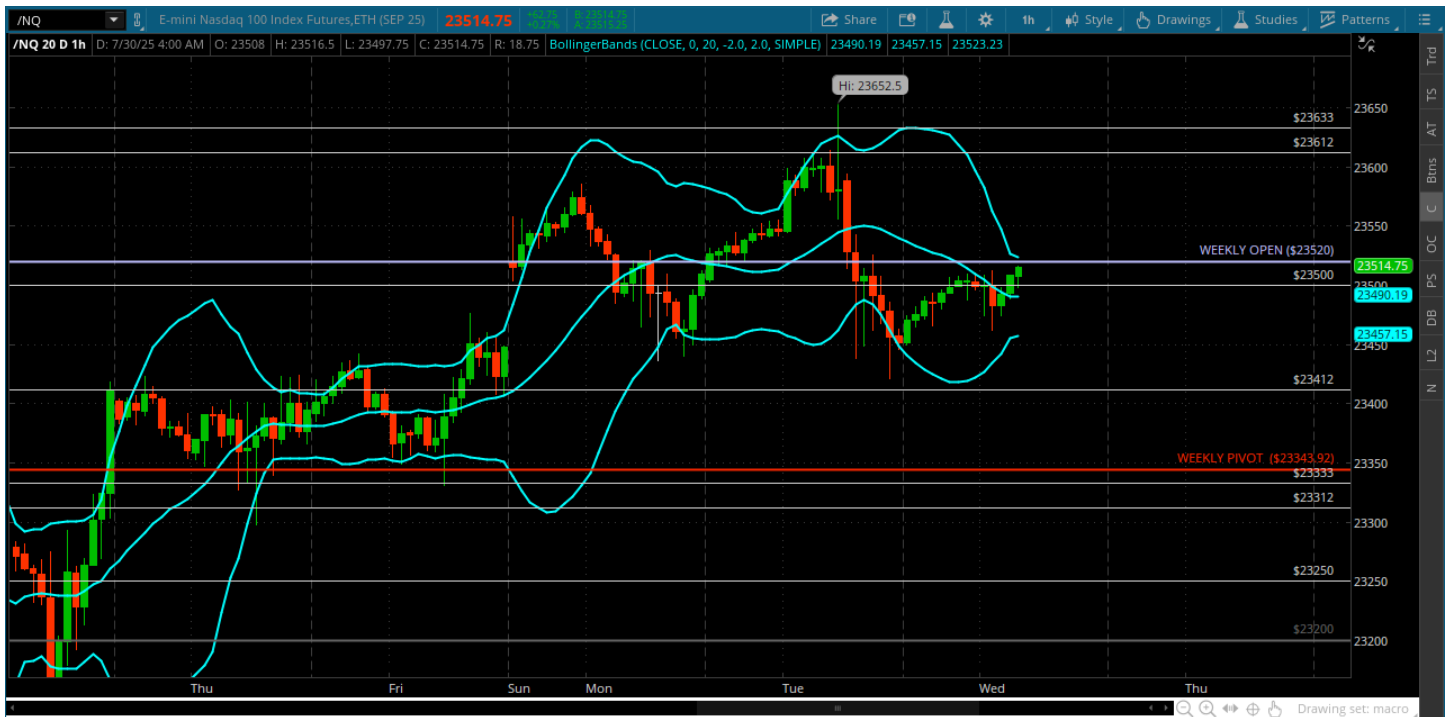
★ Low 6396.25

★ Close 6403.50

ES (Week Open) 6450.00

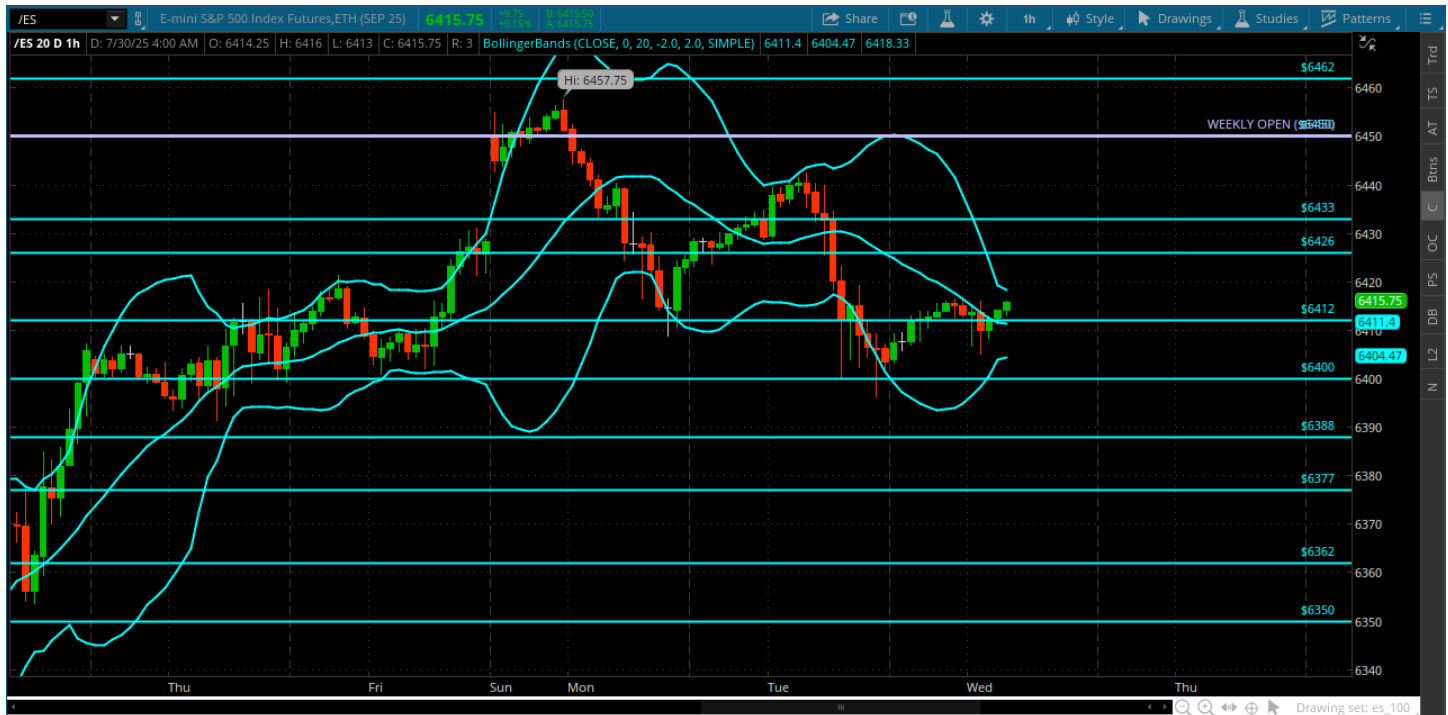
Pre-Market Charts to Watch

Wednesday, July 30, 2025 Pre-Market /NQ 1 Hour Chart



- Nice rejection from a new high -- entire overnight session under the weekly open gives the bears the advantage
- All about the weekly open here -- above it gives the bulls the ball to seek the 23612
- Bears need to test the 23412 and 23333 - bigger down move accelerates under 23250
- FED Day and big tech earnings today

Wednesday, July 30, 2025 Pre-Market /ES 1 Hour Chart



- Roundy test achieved! Bears had a day!
- Now its all about the 6433 and sealing that off and looking for some price action under the 6400
- FED Day so all is hinged on that

Disclaimer:

Disclaimer: Neither TheoTrade or any of its officers, directors, employees, other personnel, representatives, agents or independent contractors is, in such capacities, a licensed financial adviser, registered investment adviser, registered broker-dealer or FINRA|SIPC|NFA-member firm. TheoTrade does not provide investment or financial advice or make investment recommendations. TheoTrade is not in the business of transacting trades, nor does TheoTrade agree to direct your brokerage accounts or give trading advice tailored to your particular situation. Nothing contained in our content constitutes a solicitation, recommendation, promotion, or endorsement of any particular security, other investment product, transaction or investment. Trading Futures, Options on Futures, and retail off-exchange foreign currency transactions involves substantial risk of loss and is not suitable for all investors. You should carefully consider whether trading is suitable for you in light of your circumstances, knowledge, and financial resources. You may lose all or more of your initial investment. Opinions, market data, and recommendations are subject to change at any time. Past Performance is not necessarily indicative of future results.