



Tony Rago's Pre-Market Playbook

★ Expected Move:

- ES High 6426.00 Low 6316.00
- NQ High 23610.00 Low 23098.00

★ **Bulls** need to hold above yest closes **6368 and 23329 -- long above these**

★ Breakouts are above yesterdays highs **6468 and 23845 - aggressive longs** (await for confirmation with a new high and a retest of the highs from above that holds)

★ **Bears** need under overnight lows **short under 6295 and 23031**

★ Breakdown is below yest lows **6357 and 23290 -- aggressive shorts** (wait for confirmation with a new low and a retest of the lows from below that hold)

★ **RANGEBOUND: 2 Way trade long and shorts will work** to get the day done

★ Keep it simple and be patient for confirmation on either side or establish the range if we are going to be rangebound

★ Confirm rally continuation with sustained trade over the 30min IB High and likewise bearish under the IB Low

ECON:

- 8:30 am U.S. employment report
- 9:10 am Cleveland Fed President Beth Hammack TV appearance
- 9:45 am S&P final U.S. manufacturing PMI
- 10:00 am ISM manufacturing
- 10:00 am Construction spending
- 10:00 am Consumer sentiment (final)
- 10:30 am Atlanta Fed President Raphael Bostic TV appearance

Pre-Market Trading Levels for today

GLOBEX

NQ

★ **HIGH:** 23347.50

★ **LOW:** 23031.50

★ **Bull Case** defend the 23000 to seek the 23106, 23250, 23312, 23333, 23412, 23500, 23612, 23633, 23750, 23812, 23833, 23912, 24000, 24106

★ **Bear Case** seal the 23412 to seek the 23333, 23312, 23250, 23106, 23000, 22912, 22833

NQ EXPECTED MOVE

★ High 23610.00

★ Low 23098.00

NQ (Prev. Day)

★ High 23845.00

★ Low 23290.50

★ Close 23329.50

NQ (Week Open) 23520.00

S&P 500

★ **HIGH** - 6373.50

★ **LOW** - 6295.00

★ **Bull Case:** defend the 6300 to seek the 6312, 6333, 6350, 6362, 6377, 6388, 6400, 6412, 6433, 6450, 6462, 6477, 6488, 6500, 6512, 6526, 6533

★ **Bear Case:** seal the 6362 to seek the 6350, 6333, 6326, 6312, 6300, 6288, 6277, 6262, 6250, 6233

ES EXPECTED MOVE

★ High 6426.00

★ Low 6316.00

ES (Prev Day)

★ High 6468.50

★ Low 6357.50

★ Close 6368.75

ES (Week Open) 6450.00

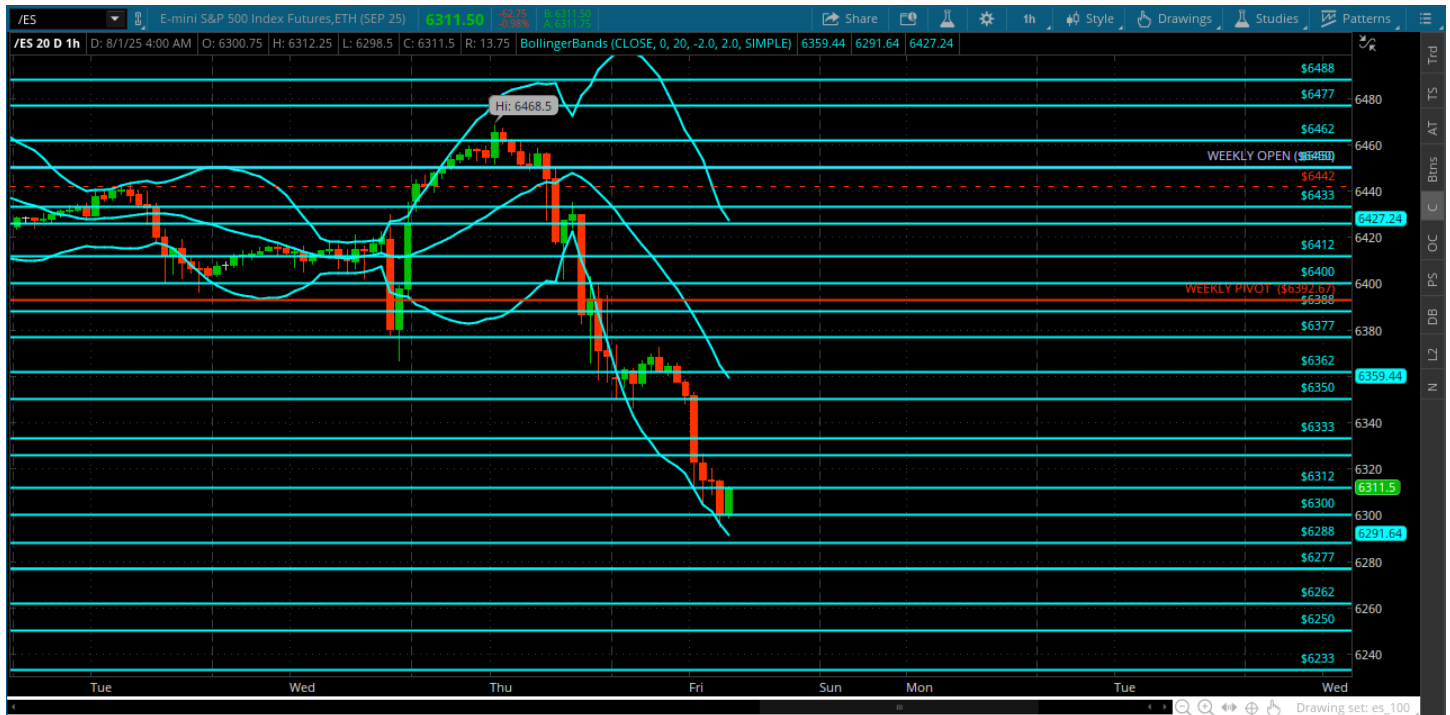
Pre-Market Charts to Watch

Fridayday, August 1, 2025 Pre-Market /NQ 1 Hour Chart



- Bears show up!
- Reversal from the new highs and taking out some key support at 23250
- Every dip has been bought so let's see how they deal with the big 23000 roundy
- First day of a new month today and a Friday - could be a tricky day

Friday, August 1, 2025 Pre-Market /ES 1 Hour Chart



- Bears had a day and continued into the overnight session
- Testing the 6300 - if dip buyers show up this is a level to watch
- Below the 6288 can get a bigger move going and deny the dip buyers
- Lets see how we open

Disclaimer:

Disclaimer: Neither TheoTrade or any of its officers, directors, employees, other personnel, representatives, agents or independent contractors is, in such capacities, a licensed financial adviser, registered investment adviser, registered broker-dealer or FINRA|SIPC|NFA-member firm. TheoTrade does not provide investment or financial advice or make investment recommendations. TheoTrade is not in the business of transacting trades, nor does TheoTrade agree to direct your brokerage accounts or give trading advice tailored to your particular situation. Nothing contained in our content constitutes a solicitation, recommendation, promotion, or endorsement of any particular security, other investment product, transaction or investment. Trading Futures, Options on Futures, and retail off-exchange foreign currency transactions involves substantial risk of loss and is not suitable for all investors. You should carefully consider whether trading is suitable for you in light of your circumstances, knowledge, and financial resources. You may lose all or more of your initial investment. Opinions, market data, and recommendations are subject to change at any time. Past Performance is not necessarily indicative of future results.