



Tony Rago's Pre-Market Playbook

- ★ ES WEEKLY PIVOT 6386.00
- ★ NQ WEEKLY PIVOT 23163.33
- ★ Expected Move:
 - ES High 6423.50 Low 6203.50
 - NQ High 23137.00 Low 22623.00
- ★ **Bulls** need to hold above yest closes **6263 and 22870 -- long above these**
- ★ Breakouts are above yesterdays highs **6373 and 23347 - aggressive longs** (await for confirmation with a new high and a retest of the highs from above that holds)
- ★ **Bears** need under overnight lows **short under 6295 and 22821**
- ★ Breakdown is below yest lows **6251 and 22775 -- aggressive shorts** (wait for confirmation with a new low and a retest of the lows from below that hold)
- ★ **RANGEBOUND: 2 Way trade long and shorts will work** to get the day done
- ★ Keep it simple and be patient for confirmation on either side or establish the range if we are going to be rangebound
- ★ Confirm rally continuation with sustained trade over the 30min IB High and likewise bearish under the IB Low

ECON:

- 10:00 am Factory orders

Pre-Market Trading Levels for today

GLOBEX

NQ

★ **HIGH:** 23081.75

★ **LOW:** 22821.75

★ **Bull Case** defend the 23833 to seek the 22912, 23000, 23106, 23250, 23312, 23333, 23412, 23500, 23612, 23633, 23750, 23812, 23833, 23912, 24000, 24106

★ **Bear Case** seal the 23312 to seek the 23250, 23106, 23000, 22912, 22833, 22812, 22750, 22633, 22612

NQ EXPECTED MOVE

★ High 23137.00

★ Low 22623.00

NQ (Prev. Day)

★ High 23347.50

★ Low 22775.00

★ Close 22870.00

NQ (Week Open) 22850.00

S&P 500

★ **HIGH** - 6310.00

★ **LOW** - 6251.25

★ **Bull Case:** defend the 6277 to seek the 6288, 6300, 6312, 6333, 6350, 6362, 6377, 6388, 6400, 6412, 6433, 6450, 6462, 6477, 6488, 6500, 6512, 6526, 6533

★ **Bear Case:** seal the 6333 to seek the 6326, 6312, 6300, 6288, 6277, 6262, 6250, 6233

ES EXPECTED MOVE

★ High 6423.50

★ Low 6203.50

ES (Prev Day)

★ High 6373.50

★ Low 6239.50

★ Close 6263.25

ES (Week Open) 6257.00

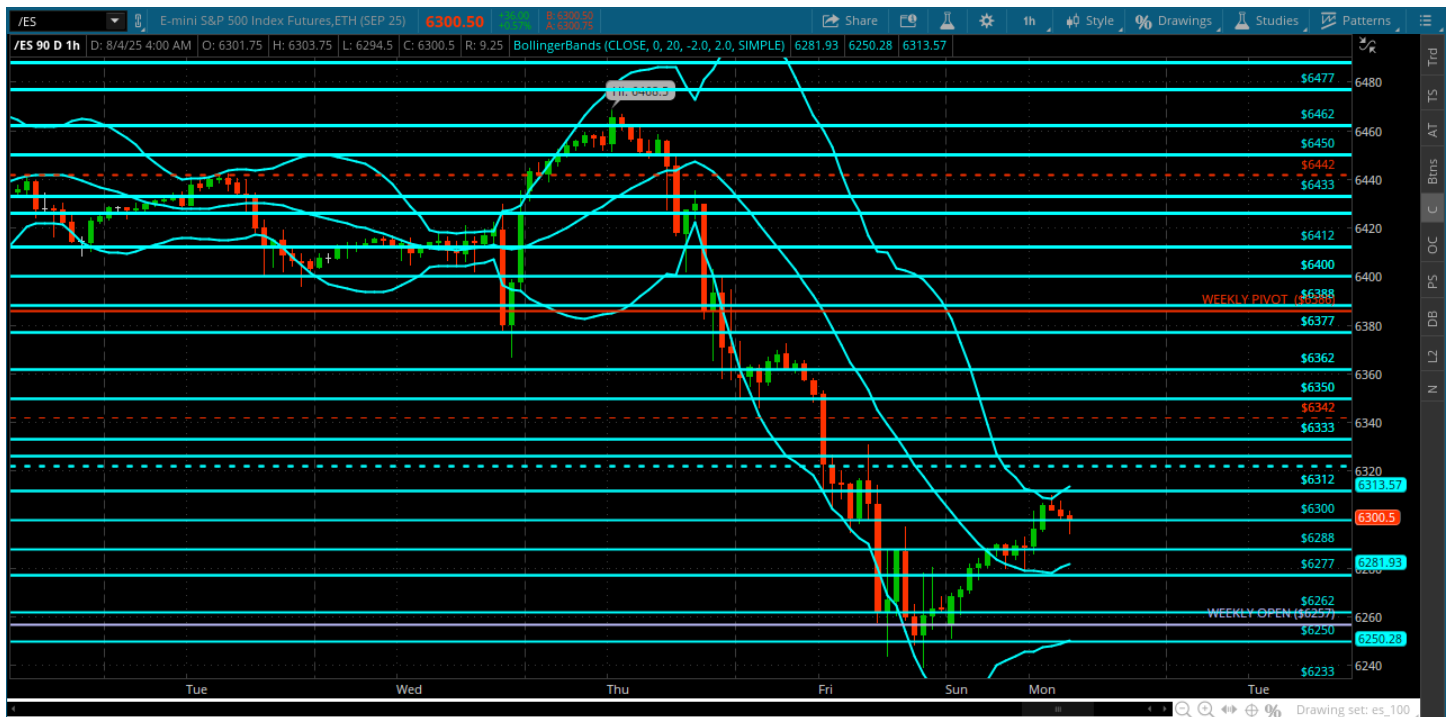
Pre-Market Charts to Watch

Monday, August 4, 2025 Pre-Market /NQ 1 Hour Chart



- Nice pullback and getting some support from the 22812
- Bulls need to reclaim the 23000 and hold it
- Bears want to defend the 23106 and weekly pivot and move to the 22750
- Keep it simple -- we could see a test of weekly pivot today

Monday, August 4, 2025 Pre-Market /ES 1 Hour Chart



- Solid pullback - now what?
- Halfway back is the 6350 or so -- dealing with the 6300 roundy here pre-open
- Lets see how we open -- with VIX 19-20 we could see some volatility so we should have some setups today
- Keep it simple today -- could turn into a big rally or resume trend down
- Let the initial balance tell you what kind of day it is

Disclaimer:

Disclaimer: Neither TheoTrade or any of its officers, directors, employees, other personnel, representatives, agents or independent contractors is, in such capacities, a licensed financial adviser, registered investment adviser, registered broker-dealer or FINRA|SIPC|NFA-member firm. TheoTrade does not provide investment or financial advice or make investment recommendations. TheoTrade is not in the business of transacting trades, nor does TheoTrade agree to direct your brokerage accounts or give trading advice tailored to your particular situation. Nothing contained in our content constitutes a solicitation, recommendation, promotion, or endorsement of any particular security, other investment product, transaction or investment. Trading Futures, Options on Futures, and retail off-exchange foreign currency transactions involves substantial risk of loss and is not suitable for all investors. You should carefully consider whether trading is suitable for you in light of your circumstances, knowledge, and financial resources. You may lose all or more of your initial investment. Opinions, market data, and recommendations are subject to change at any time. Past Performance is not necessarily indicative of future results.