



Tony Rago's Pre-Market Playbook

★ Expected Move:

- ES High 6393.00 Low 6321.00
- NQ High 23455.00 Low 23129.00

★ **Bulls** need to hold above yest closes **6369 and 22350 -- long above these**

★ Breakouts are above yesterdays highs **6370 and 23352 - aggressive longs** (await for confirmation with a new high and a retest of the highs from above that holds)

★ **Bears** need under overnight lows **short under 6358 and 23312**

★ Breakdown is below yest lows **6251 and 22821 -- aggressive shorts** (wait for confirmation with a new low and a retest of the lows from below that hold)

★ **RANGEBOUND: 2 Way trade long and shorts will work** to get the day done

★ Keep it simple and be patient for confirmation on either side or establish the range if we are going to be rangebound

★ Confirm rally continuation with sustained trade over the 30min IB High and likewise bearish under the IB Low

ECON:

- 8:30 am U.S. trade deficit
- 9:45 am S&P final U.S. services PMI
- 10:00 am ISM services

Pre-Market Trading Levels for today

GLOBEX

NQ

★ **HIGH:** 23397.25

★ **LOW:** 23312.50

★ **Bull Case** defend the 23250 to seek the 23312, 23333, 23412, 23500, 23612, 23633, 23750, 23812, 23833, 23912, 24000, 24106

★ **Bear Case** seal the 23500 to seek the 23412, 23333, 23312, 23250, 23106, 23000, 22912, 22833, 22812, 22750, 22633, 22612

NQ EXPECTED MOVE

★ High 23455.00

★ Low 23129.00

NQ (Prev. Day)

★ High 23352.50

★ Low 22821.75

★ Close 23350.75

NQ (Week Open) 22850.00

S&P 500

★ **HIGH** - 6377.50

★ **LOW** - 6258.50

★ **Bull Case:** defend the 6333 to seek the 6350, 6362, 6377, 6388, 6400, 6412, 6433, 6450, 6462, 6477, 6488, 6500, 6512, 6526, 6533

★ **Bear Case:** seal the 6388 to seek the 6377, 6362, 6350, 6333, 6326, 6312, 6300, 6288, 6277, 6262, 6250, 6233

ES EXPECTED MOVE

★ High 6393.00

★ Low 6321.00

ES (Prev Day)

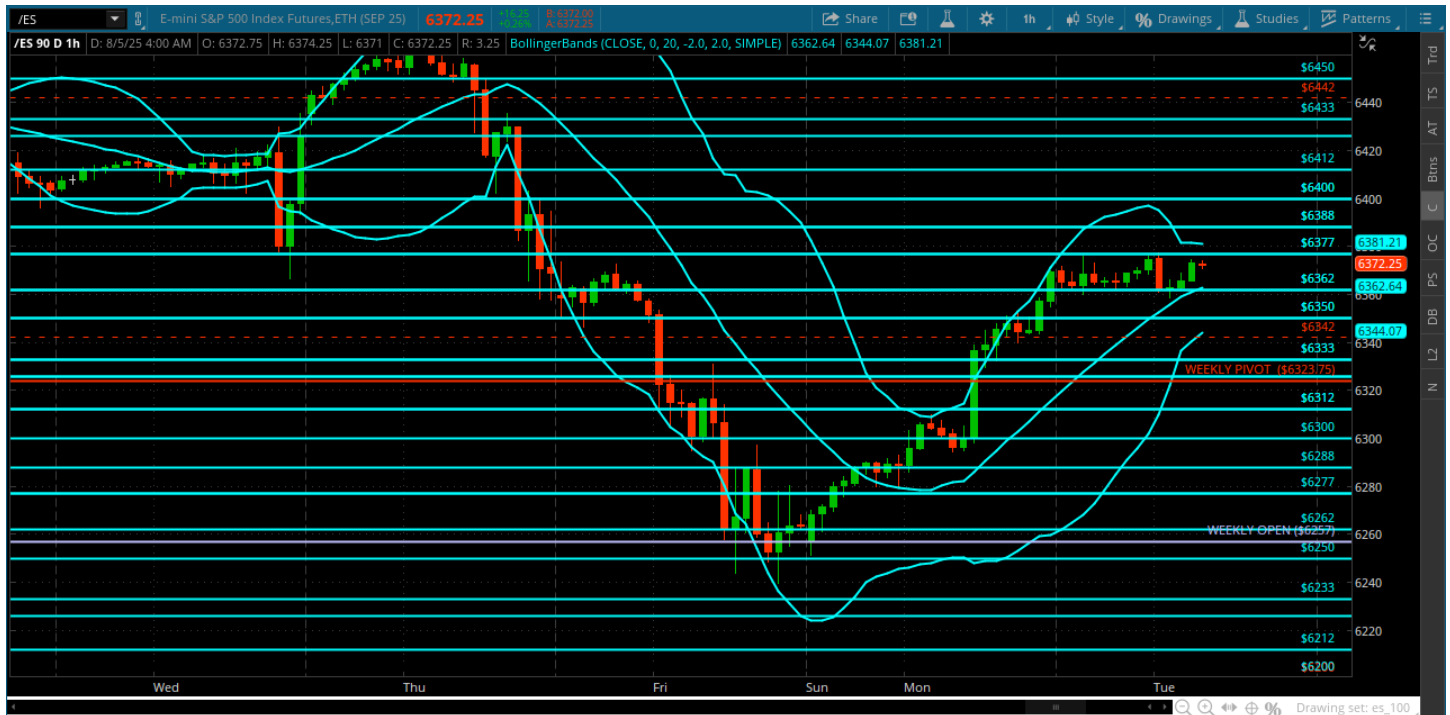
★ High 6370.00

★ Low 6251.25

★ Close 6369.50

ES (Week Open) 6257.00

Tuesday, August 5, 2025 Pre-Market /ES 1 Hour Chart



- Bulls push to the 6377 – if bears are going to do anything with this rally they need to defend the 6388 or risk a move back into the 6400s
- Bears need back under weekly pivot and the 6312
- Bulls want to breakout above 6388 and/or hold a pullback to the 6342/6333

Disclaimer:

Disclaimer: Neither TheoTrade or any of its officers, directors, employees, other personnel, representatives, agents or independent contractors is, in such capacities, a licensed financial adviser, registered investment adviser, registered broker-dealer or FINRA|SIPC|NFA-member firm. TheoTrade does not provide investment or financial advice or make investment recommendations. TheoTrade is not in the business of transacting trades, nor does TheoTrade agree to direct your brokerage accounts or give trading advice tailored to your particular situation. Nothing contained in our content constitutes a solicitation, recommendation, promotion, or endorsement of any particular security, other investment product, transaction or investment. Trading Futures, Options on Futures, and retail off-exchange foreign currency transactions involves substantial risk of loss and is not suitable for all investors. You should carefully consider whether trading is suitable for you in light of your circumstances, knowledge, and financial resources. You may lose all or more of your initial investment. Opinions, market data, and recommendations are subject to change at any time. Past Performance is not necessarily indicative of future results.