



## *Tony Rago's Pre-Market Playbook*

---

### ★ Overnight Range - Inventory is LONG

- ES 62.50
- NQ 254.50

### ★ VIX 16.18

★ **Bulls** need to hold above yest closes **6370** and **23412** -- long above these

★ Breakouts are above yesterdays highs **6380** and **23445** - aggressive longs (await for confirmation with a new high and a retest of the highs from above that holds

★ **Bears** need under overnight lows **short under 6364** and **23384**

★ Breakdown is below yest lows **6313** and **23045** -- aggressive shorts (wait for confirmation with a new low and a retest of the lows from below that hold)

★ **RANGEBOUND: 2 Way trade long and shorts will work** to get the day done

★ Keep it simple and be patient for confirmation on either side or establish the range if we are going to be rangebound

★ Confirm rally continuation with sustained trade over the 30min IB High and likewise bearish under the IB Low

### ECON:

- 8:30 am Initial jobless claims
- 8:30 am U.S. productivity
- 10:00 am Wholesale inventories
- 10:00 am Atlanta Fed President Raphael Bostic speech
- 3:00 pm Consumer credit

## *Pre-Market Trading Levels for today*

---

### GLOBEX

#### NQ

★ **HIGH:** 23639.00

★ **LOW:** 23384.50

★ **Bull Case** defend the 23412 to seek the 23500, 23612, 23633, 23750, 23812, 23833, 23912, 24000, 24106

★ **Bear Case** seal the 23633 to seek the 23612, 63500, 23412, 23333, 23312, 23250, 23106, 23000, 22912, 22833, 22812, 22750, 22633, 22612

★ **Overnight Range - 254.50**

#### NQ (Prev. Day)

★ High 23445.25

★ Low 23045.50

★ Close 23413.25

**NQ (Week Open) 22850.00**

## S&P 500

★ **HIGH** - 6426.75

★ **LOW** - 6364.25

★ **Bull Case:** defend the 6377 to seek the 6388, 6400, 6412, 6433, 6450, 6462, 6477, 6488, 6500, 6512, 6526, 6533

★ **Bear Case:** seal the 6433 to seek the 6426, 6412, 6400, 6388, 6377, 6362, 6350, 6333, 6326, 6312, 6300, 6288, 6277, 6262, 6250, 6233

★ **Overnight Range** - 62.50

### ES (Prev Day)

★ High 6379.50

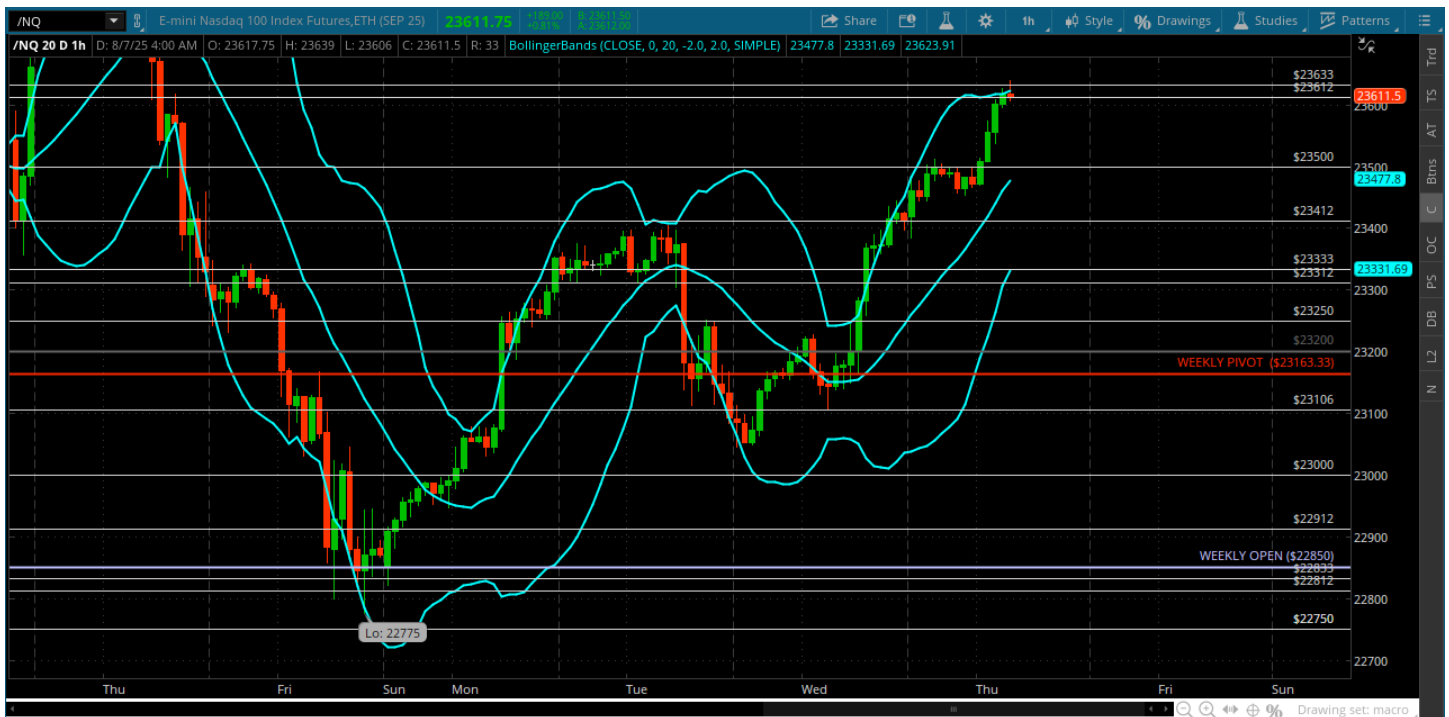
★ Low 6313.25

★ Close 6370.75

**ES (Week Open) 6257.00**

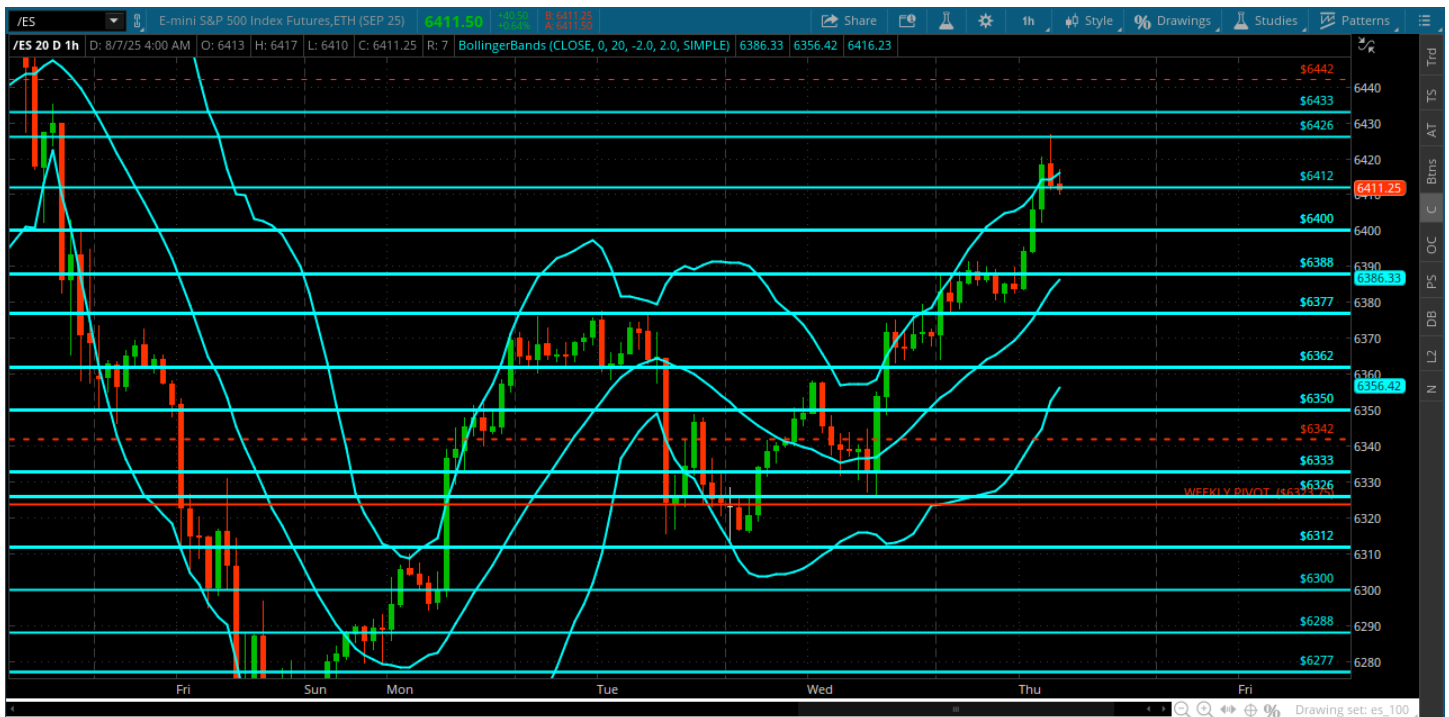
## Pre-Market Charts to Watch

Thursday, August 7, 2025 Pre-Market /NQ 1 Hour Chart



- Bulls converted the weekly pivot and ran the bears out of town -- back above the 23412 and 23500
- Bulls need to defend the 23500 and 23412 on pullbacks
- Bears need back under the 23412 and the 23312
- Big move overnight so will have to see how we open - we are trading the leftovers

## Thursday, August 7, 2025 Pre-Market /ES 1 Hour Chart



- Weekly pivot sent it! Bulls ran the bear over with a tariff headline overnight
- 6333 is open for a test as long as price can stay above the 6400
- Bears need under the 6377 and 6362
- Bulls need to keep pressure on and price above 6400

*Disclaimer:*

Disclaimer: Neither TheoTrade or any of its officers, directors, employees, other personnel, representatives, agents or independent contractors is, in such capacities, a licensed financial adviser, registered investment adviser, registered broker-dealer or FINRA|SIPC|NFA-member firm. TheoTrade does not provide investment or financial advice or make investment recommendations. TheoTrade is not in the business of transacting trades, nor does TheoTrade agree to direct your brokerage accounts or give trading advice tailored to your particular situation. Nothing contained in our content constitutes a solicitation, recommendation, promotion, or endorsement of any particular security, other investment product, transaction or investment. Trading Futures, Options on Futures, and retail off-exchange foreign currency transactions involves substantial risk of loss and is not suitable for all investors. You should carefully consider whether trading is suitable for you in light of your circumstances, knowledge, and financial resources. You may lose all or more of your initial investment. Opinions, market data, and recommendations are subject to change at any time. Past Performance is not necessarily indicative of future results.