



Tony Rago's Pre-Market Playbook

★ Overnight Range

- ES 20.25
- NQ 80.00

★ VIX 16.24

- ★ **Bulls** need to hold above yest closes **6373 and 23521 -- long above these**
- ★ Breakouts are above yesterdays highs **6426.75 and 23671 - aggressive longs** (await for confirmation with a new high and a retest of the highs from above that holds)
- ★ **Bears** need under overnight lows **short under 6369 and 23500**
- ★ Breakdown is below yest lows **6334 and 23329 -- aggressive shorts** (wait for confirmation with a new low and a retest of the lows from below that hold)
- ★ **RANGEBOUND: 2 Way trade long and shorts will work** to get the day done
- ★ Keep it simple and be patient for confirmation on either side or establish the range if we are going to be rangebound
- ★
- ★ Confirm rally continuation with sustained trade over the 30min IB High and likewise bearish under the IB Low

ECON:

- 10:00 am St. Louis Fed President Alberto Musalem speech

Pre-Market Trading Levels for today

GLOBEX

NQ

★ **HIGH:** 23583.00

★ **LOW:** 23503.00

★ **Bull Case** defend the 23412 to seek the 23500, 23612, 23633, 23750, 23812, 23833, 23912, 24000, 24106

★ **Bear Case** seal the 23633 to seek the 23612, 63500, 23412, 23333, 23312, 23250, 23106, 23000, 22912, 22833, 22812, 22750, 22633, 22612

★ **Overnight Range - 80.00**

NQ (Prev. Day)

★ High 23671.00

★ Low 23329.00

★ Close 23521.75

NQ (Week Open) 22850.00

S&P 500

★ **HIGH** - 6389.50

★ **LOW** - 6369.25

★ **Bull Case:** defend the 6350 to seek the 6362, 6377, 6388, 6400, 6412, 6433, 6450, 6462, 6477, 6488, 6500, 6512, 6526, 6533

★ **Bear Case:** seal the 6433 to seek the 6426, 6412, 6400, 6388, 6377, 6362, 6350, 6333, 6326, 6312, 6300, 6288, 6277, 6262, 6250, 6233

★ **Overnight Range** - 20.25

ES (Prev Day)

★ High 6426.75

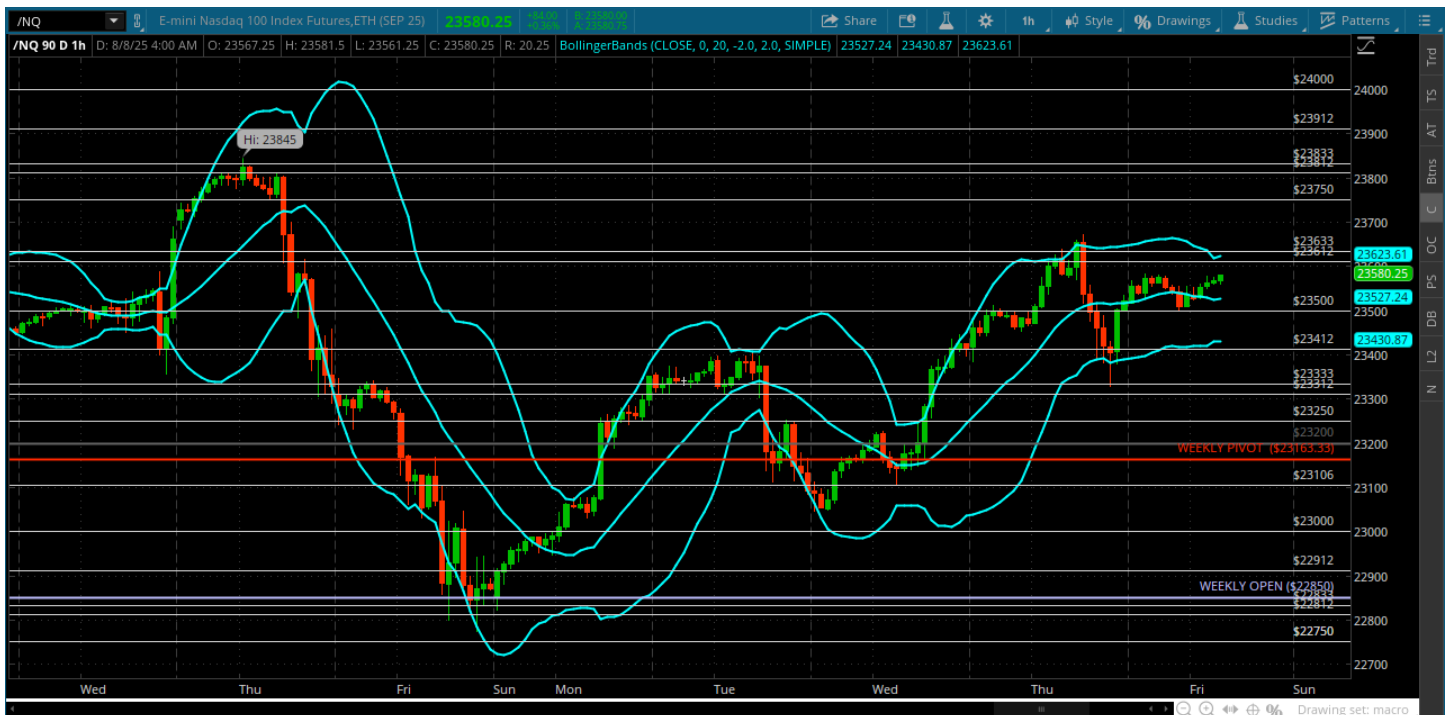
★ Low 6334.50

★ Close 6373.75

ES (Week Open) 6257.00

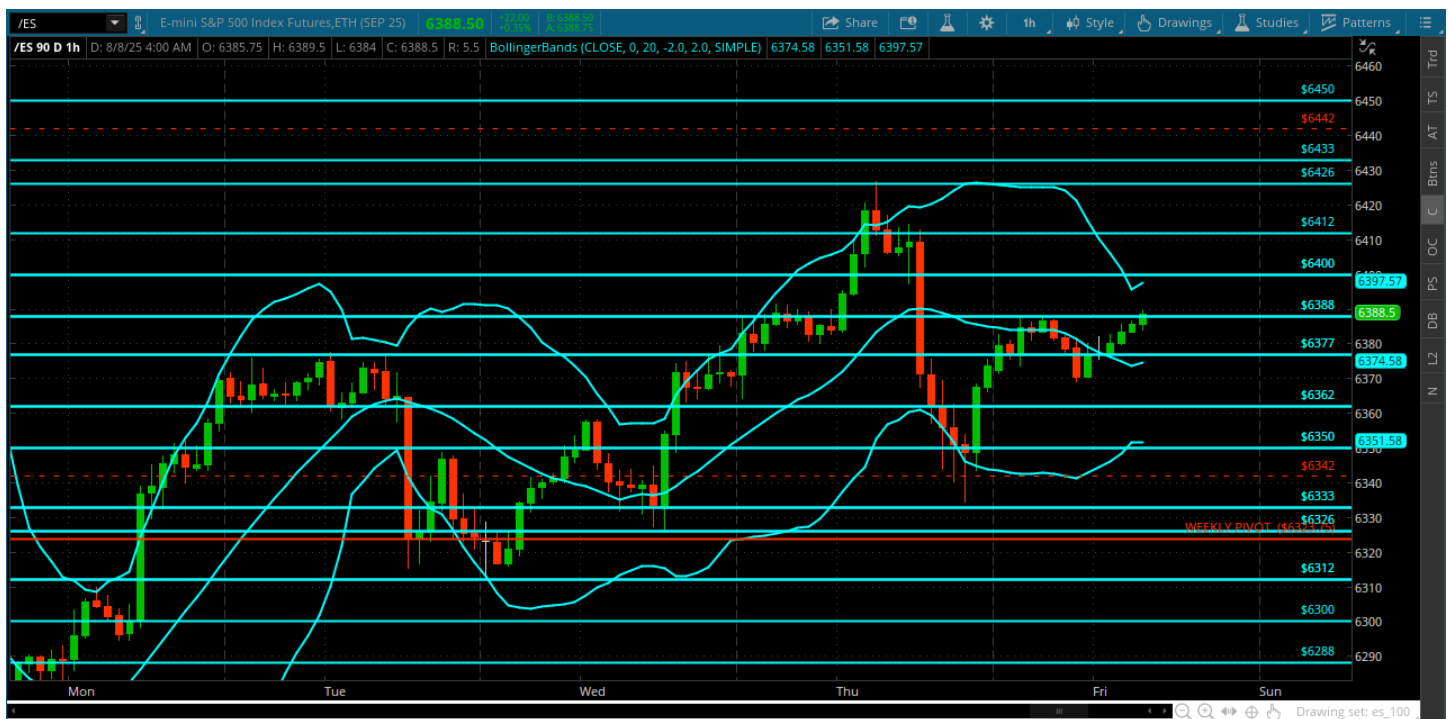
Pre-Market Charts to Watch

Friday, August 8, 2025 Pre-Market /NQ 1 Hour Chart



- Big reversal at the open yesterday that brought all the way back to the 23333 where buyers stepped back in and closed us back above the 23500
- Tape looks neutral here – either side has potential to grab the ball and run with it
- Under the 23500 has potential to head back to yesterdays lows above it needs to test yesterdays highs
- Could be a range bound tape today

Friday, August 8, 2025 Pre-Market /ES 1 Hour Chart



- Big rejection from 6426 and found support at the 6342 and now basically halfway back to the 6388
- Could be a rangebound tape unless a headline drives back above 6412 or below the 6362
- This could become a large triangle – its Friday and VIX is 16
- Will let this open and look for the 6362 to hold on a backtest – under that opens yesterdays lows

Disclaimer:

Disclaimer: Neither TheoTrade or any of its officers, directors, employees, other personnel, representatives, agents or independent contractors is, in such capacities, a licensed financial adviser, registered investment adviser, registered broker-dealer or FINRA|SIPC|NFA-member firm. TheoTrade does not provide investment or financial advice or make investment recommendations. TheoTrade is not in the business of transacting trades, nor does TheoTrade agree to direct your brokerage accounts or give trading advice tailored to your particular situation. Nothing contained in our content constitutes a solicitation, recommendation, promotion, or endorsement of any particular security, other investment product, transaction or investment. Trading Futures, Options on Futures, and retail off-exchange foreign currency transactions involves substantial risk of loss and is not suitable for all investors. You should carefully consider whether trading is suitable for you in light of your circumstances, knowledge, and financial resources. You may lose all or more of your initial investment. Opinions, market data, and recommendations are subject to change at any time. Past Performance is not necessarily indicative of future results.