



Tony Rago's Pre-Market Playbook

- ★ ES WEEKLY PIVOT 6367.75
- ★ NQ WEEKLY PIVOT 23451.67
- ★ Overnight Range
 - ES 21.00
 - NQ 105.25
- ★ VIX 15.80
- ★ **Bulls** need to hold above yest closes **6425 and 23765 -- long above these**
- ★ Breakouts are above yesterdays highs **6426 and 23767 - aggressive longs** (await for confirmation with a new high and a retest of the highs from above that holds)
- ★ **Bears** need under overnight lows **short under 6408 and 23665**
- ★ Breakdown is below yest lows **6369 and 23503 -- aggressive shorts** (wait for confirmation with a new low and a retest of the lows from below that hold)
- ★ **RANGEBOUND: 2 Way trade long and shorts will work** to get the day done
- ★ Keep it simple and be patient for confirmation on either side or establish the range if we are going to be rangebound
- ★ Confirm rally continuation with sustained trade over the 30min IB High and likewise bearish under the IB Low

ECON:

- n/a

Pre-Market Trading Levels for today

GLOBEX

NQ

★ **HIGH:** 23773.00

★ **LOW:** 23667.75

★ **Bull Case** defend the 23412 to seek the 23500, 23612, 23633, 23750, 23812, 23833, 23912, 24000, 24106

★ **Bear Case** seal the 23633 to seek the 23612, 63500, 23412, 23333, 23312, 23250, 23106, 23000, 22912, 22833, 22812, 22750, 22633, 22612

★ **Overnight Range - 105.25**

NQ (Prev. Day)

★ High 23767.75

★ Low 23503.00

★ Close 23765.50

NQ (Week Open) 23764.00

S&P 500

★ **HIGH** - 6429.50

★ **LOW** - 6408.50

★ **Bull Case:** defend the 6388 to seek the 6400, 6412, 6433, 6450, 6462, 6477, 6488, 6500, 6512, 6526, 6533

★ **Bear Case:** seal the 6442 to seek the 6433, 6426, 6412, 6400, 6388, 6377, 6362, 6350, 6333, 6326, 6312, 6300, 6288, 6277, 6262, 6250, 6233

★ **Overnight Range** - 21.00

ES (Prev Day)

★ High 6425.75

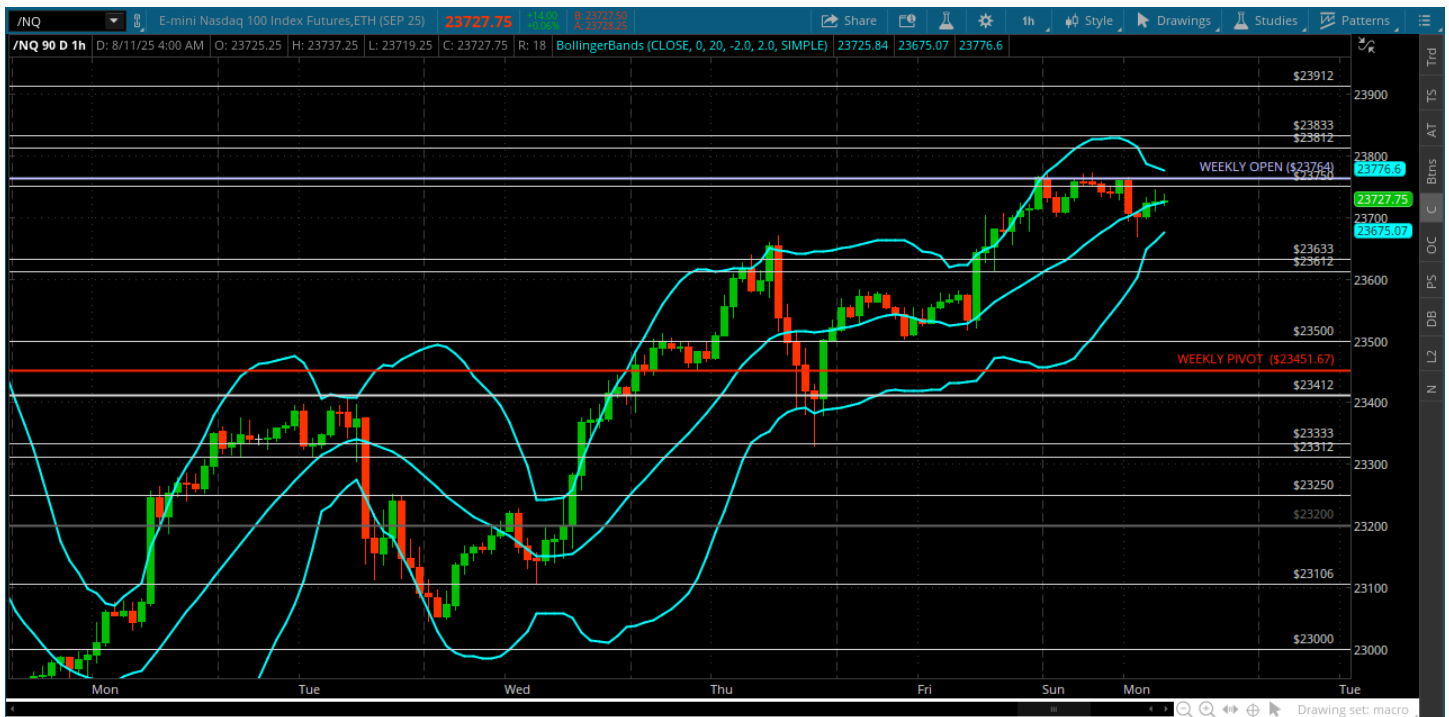
★ Low 6369.25

★ Close 6425.25

ES (Week Open) 6422.75

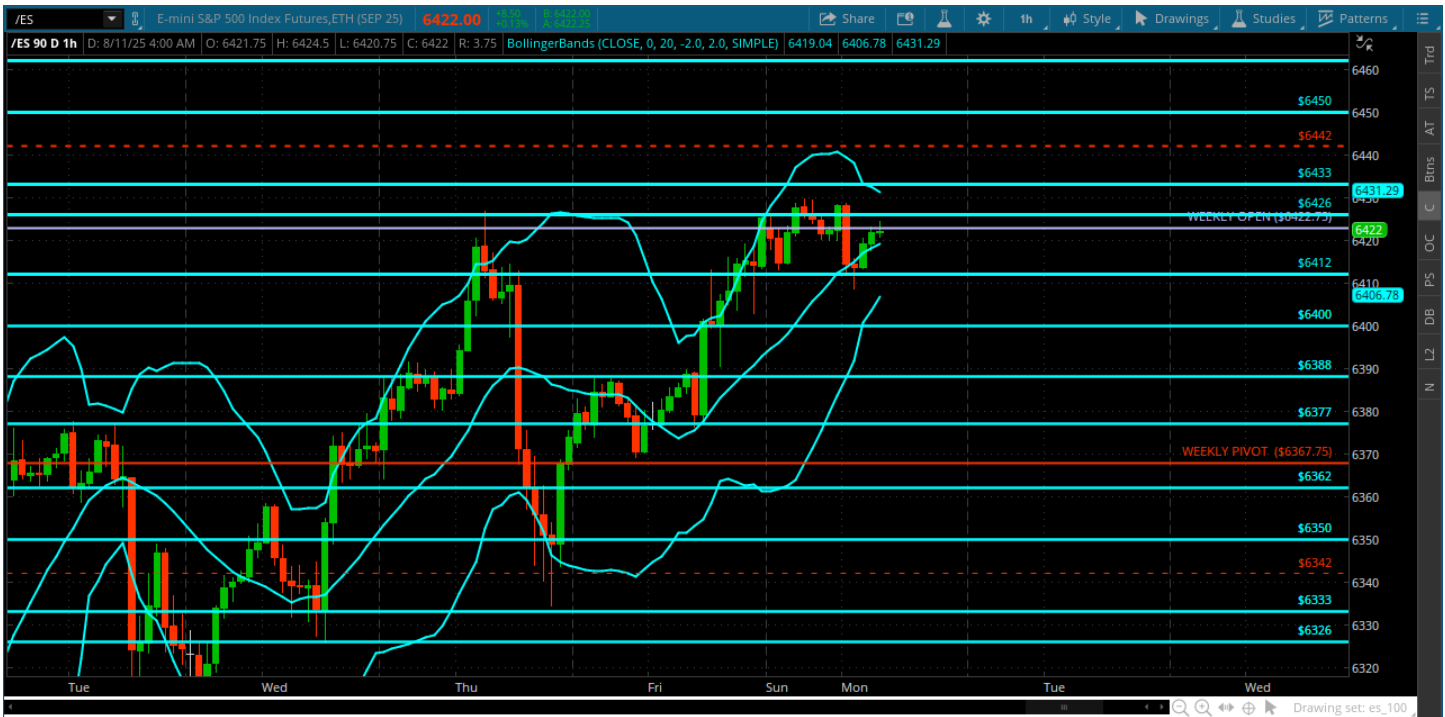
Pre-Market Charts to Watch

Monday, August 11, 2025 Pre-Market /NQ 1 Hour Chart



- Knocking on the door of all time highs again
- Big week for econ with CPI and PPI
- Bulls still in control until we can get below the weekly pivot 2345123412
- Bulls need to hold the 23612 on a pullback and go get the 23750, 23812

Monday, August 11, 2025 Pre-Market /ES 1 Hour Chart



- Bulls saved the tape last week and had a quiet walk up to the 6426 on Friday
- It is theirs to lose with VIX in the 15s -- big econ this week with CPI tomorrow
- Could be a quiet day today as we wait for CPI
- Bulls need to test the 6333

Disclaimer:

Disclaimer: Neither TheoTrade or any of its officers, directors, employees, other personnel, representatives, agents or independent contractors is, in such capacities, a licensed financial adviser, registered investment adviser, registered broker-dealer or FINRA|SIPC|NFA-member firm. TheoTrade does not provide investment or financial advice or make investment recommendations. TheoTrade is not in the business of transacting trades, nor does TheoTrade agree to direct your brokerage accounts or give trading advice tailored to your particular situation. Nothing contained in our content constitutes a solicitation, recommendation, promotion, or endorsement of any particular security, other investment product, transaction or investment. Trading Futures, Options on Futures, and retail off-exchange foreign currency transactions involves substantial risk of loss and is not suitable for all investors. You should carefully consider whether trading is suitable for you in light of your circumstances, knowledge, and financial resources. You may lose all or more of your initial investment. Opinions, market data, and recommendations are subject to change at any time. Past Performance is not necessarily indicative of future results.