



Tony Rago's Pre-Market Playbook

★ Overnight Range

- ES 45.50
- NQ 209.75

★ VIX 16.46

- ★ **Bulls** need to hold above yest closes **6396 and 23630** -- long above these
- ★ Breakouts are above yesterdays highs **6431 and 23804** - aggressive longs (await for confirmation with a new high and a retest of the highs from above that holds)
- ★ **Bears** need under overnight lows **short under 6392 and 23596**
- ★ Breakdown is below yest lows **6387 and 23587** -- aggressive shorts (wait for confirmation with a new low and a retest of the lows from below that hold)
- ★ **RANGEBOUND: 2 Way trade long and shorts will work** to get the day done
- ★ Keep it simple and be patient for confirmation on either side or establish the range if we are going to be rangebound
- ★ Confirm rally continuation with sustained trade over the 30min IB High and likewise bearish under the IB Low

ECON:

- 8:30 am Core CPI
- 10:00 am Richmond Fed President Tom Barkin speaks
- 10:00 am Kansas City Fed President Jeff Schmid speech
- 2:00 pm Monthly U.S. federal budget

Pre-Market Trading Levels for today

GLOBEX

NQ

★ **HIGH:** 23788.75

★ **LOW:** 23596.00

★ **Bull Case** defend the 23633 to seek the 23750, 23812, 23833, 23912, 24000, 24106

★ **Bear Case** seal the 23833 to seek the 23812, 23750, 23633, 23612, 63500, 23412, 23333, 23312, 23250, 23106, 23000, 22912, 22833, 22812, 22750, 22633, 22612

★ **Overnight Range - 209.75**

NQ (Prev. Day)

★ High 23804.50

★ Low 23587.50

★ Close 23629.50

NQ (Week Open) 23764.00

S&P 500

★ **HIGH** - 6436.75

★ **LOW** - 6391.25

★ **Bull Case:** defend the 6377 to seek the 6388, 6400, 6412, 6433, 6450, 6462, 6477, 6488, 6500, 6512, 6526, 6533

★ **Bear Case:** seal the 6433 to seek the 6426, 6412, 6400, 6388, 6377, 6362, 6350, 6333, 6326, 6312, 6300, 6288, 6277, 6262, 6250, 6233

★ **Overnight Range** - 45.50

ES (Prev Day)

★ High 6431.50

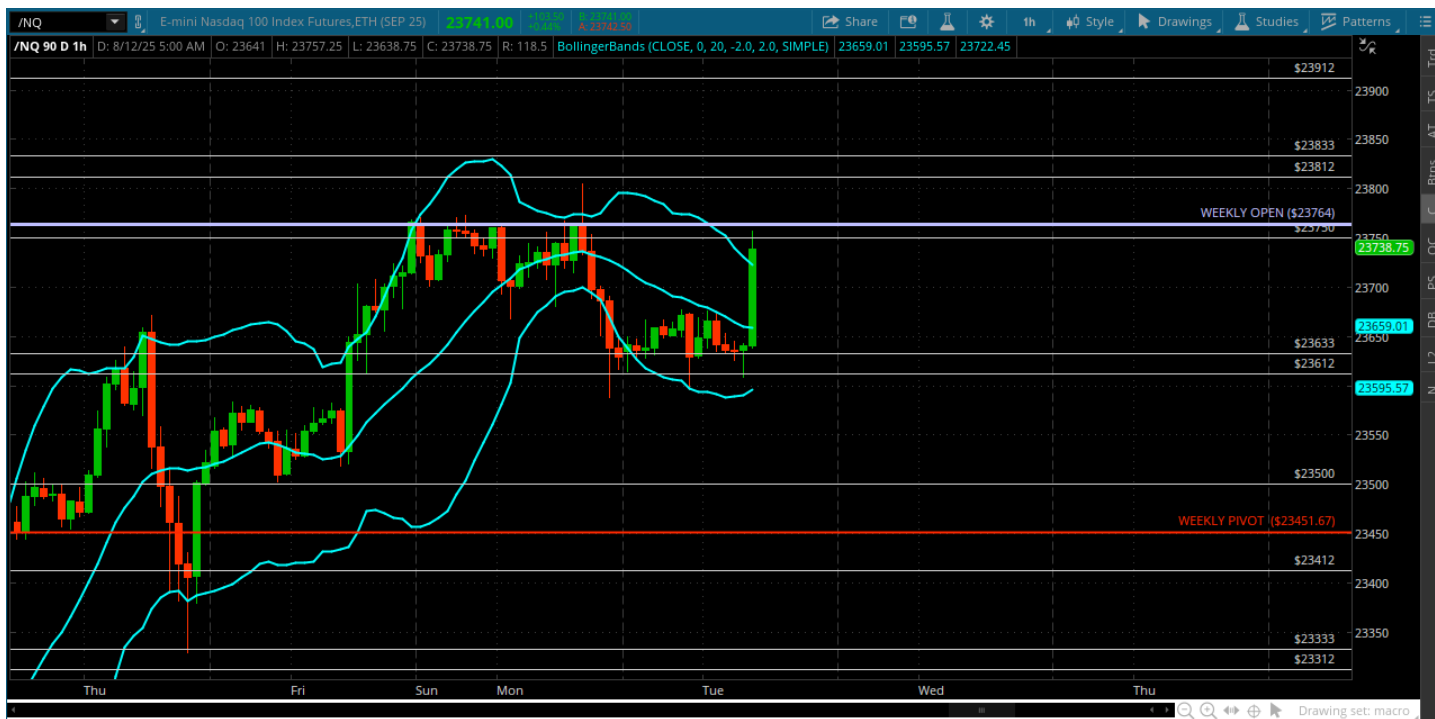
★ Low 6387.50

★ Close 6396.50

ES (Week Open) 6422.75

Pre-Market Charts to Watch

Tuesday, August 12, 2025 Pre-Market /NQ 1 Hour Chart



- 23612 held up like a champ and now pressing back to highs on CPI
- Lets see if we print a new all time highs off of this
- Should be some good vol for the day -- lets see

Tuesday, August 12, 2025 Pre-Market /ES 1 Hour Chart



- 6388 “saved the roundy” and now back to the weekly open
- It is up to the bulls to keep pressing
- Next hurdle is the 6433 -- lets see how we open and go get it!

Disclaimer:

Disclaimer: Neither TheoTrade or any of its officers, directors, employees, other personnel, representatives, agents or independent contractors is, in such capacities, a licensed financial adviser, registered investment adviser, registered broker-dealer or FINRA|SIPC|NFA-member firm. TheoTrade does not provide investment or financial advice or make investment recommendations. TheoTrade is not in the business of transacting trades, nor does TheoTrade agree to direct your brokerage accounts or give trading advice tailored to your particular situation. Nothing contained in our content constitutes a solicitation, recommendation, promotion, or endorsement of any particular security, other investment product, transaction or investment. Trading Futures, Options on Futures, and retail off-exchange foreign currency transactions involves substantial risk of loss and is not suitable for all investors. You should carefully consider whether trading is suitable for you in light of your circumstances, knowledge, and financial resources. You may lose all or more of your initial investment. Opinions, market data, and recommendations are subject to change at any time. Past Performance is not necessarily indicative of future results.