



## *Tony Rago's Pre-Market Playbook*

---

### ★ Overnight Range

- ES 25.50
- NQ 100.00

### ★ VIX 14.41

- ★ **Bulls** need to hold above yest closes **6468 and 23949** -- long above these
- ★ Breakouts are above yesterdays highs **6470 and 23953** - aggressive longs (await for confirmation with a new high and a retest of the highs from above that holds)
- ★ **Bears** need under overnight lows **short under 6461 and 23921**
- ★ Breakdown is below yest lows **6391 and 23596** -- aggressive shorts (wait for confirmation with a new low and a retest of the lows from below that hold)
- ★ **RANGEBOUND: 2 Way trade long and shorts will work** to get the day done
- ★ Keep it simple and be patient for confirmation on either side or establish the range if we are going to be rangebound
- ★ Confirm rally continuation with sustained trade over the 30min IB High and likewise bearish under the IB Low

### ECON:

- 8:00 am Richmond Fed President Tom Barkin speech
- 12:30 pm Atlanta Fed President Raphael Bostic speaks
- 2:00 pm Chicago Fed President Austan Goolsbee speaks

## *Pre-Market Trading Levels for today*

---

### GLOBEX

#### NQ

★ **HIGH:** 24021.75

★ **LOW:** 23921.75

★ **Bull Case** defend the 23833 to seek the 23912, 24000, 24106, 242520, 24312, 24333, 24412, 24500

★ **Bear Case** seal the 24106 to seek the 24000, 23912, 23833, 23812, 23750, 23633, 23612, 63500, 23412, 23333, 23312, 23250

★ **Overnight Range - 94.75**

#### NQ (Prev. Day)

★ High 23953.50

★ Low 23596.00

★ Close 23949.50

**NQ (Week Open) 23764.00**

## S&P 500

★ **HIGH** - 6486.50

★ **LOW** - 6461.00

★ **Bull Case:** defend the 6450 to seek the 6462, 6477, 6488, 6500, 6512, 6526, 6533, 6550, 6562, 6577

★ **Bear Case:** seal the 6500 to seek the 6488, 6477, 6462, 6450, 6433, 6426, 6412, 6400, 6388, 6377, 6362, 6350, 6333, 6326

★ **Overnight Range** - 23.50

## ES (Prev Day)

★ High 6470.00

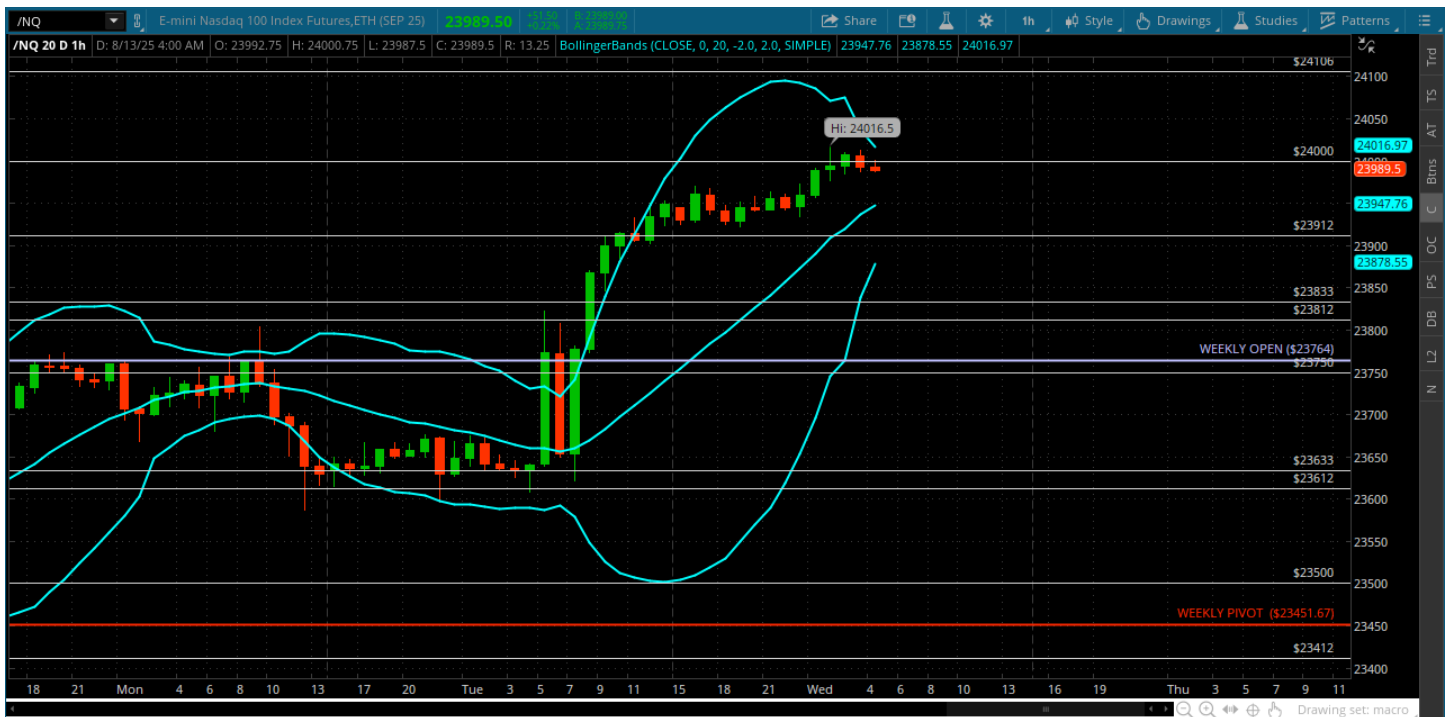
★ Low 6391.25

★ Close 6468.50

**ES (Week Open) 6422.75**

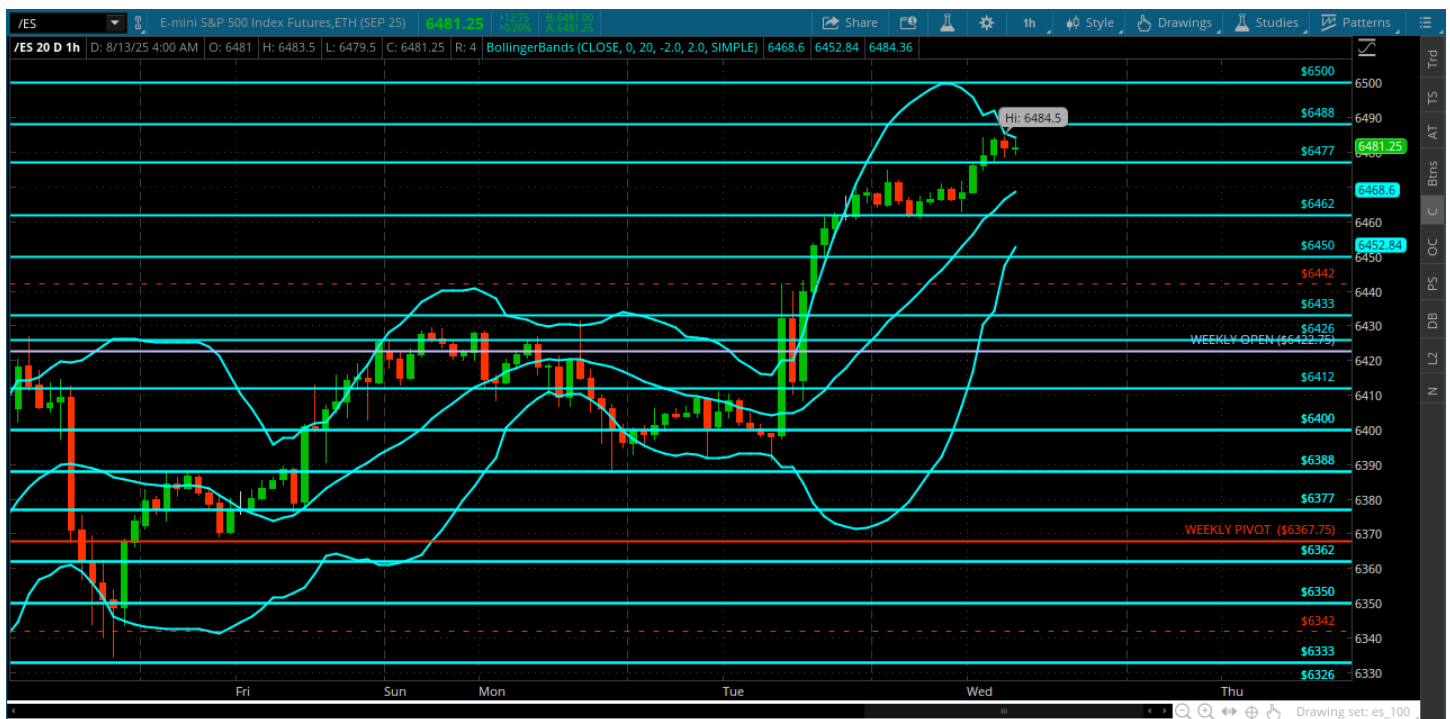
## Pre-Market Charts to Watch

### Wednesday, August 13, 2025 Pre-Market /NQ 1 Hour Chart



- 23633 Brings us to the 24000
- Big day after CPI - bulls in charge
- Will see where we go from here -- getting extended here (but what is new)
- Just have to focus on what is in front of us

## Wednesday, August 13, 2025 Pre-Market /ES 1 Hour Chart



- BIG CPI day brings us to new highs -- knockin on the door of 6500
- Up to the bulls to finish the job and get it done
- Will be watching any pullbacks for reactions -- 6468 was previous high so keep an eye on a test of that from above

*Disclaimer:*

Disclaimer: Neither TheoTrade or any of its officers, directors, employees, other personnel, representatives, agents or independent contractors is, in such capacities, a licensed financial adviser, registered investment adviser, registered broker-dealer or FINRA|SIPC|NFA-member firm. TheoTrade does not provide investment or financial advice or make investment recommendations. TheoTrade is not in the business of transacting trades, nor does TheoTrade agree to direct your brokerage accounts or give trading advice tailored to your particular situation. Nothing contained in our content constitutes a solicitation, recommendation, promotion, or endorsement of any particular security, other investment product, transaction or investment. Trading Futures, Options on Futures, and retail off-exchange foreign currency transactions involves substantial risk of loss and is not suitable for all investors. You should carefully consider whether trading is suitable for you in light of your circumstances, knowledge, and financial resources. You may lose all or more of your initial investment. Opinions, market data, and recommendations are subject to change at any time. Past Performance is not necessarily indicative of future results.