



Tony Rago's Pre-Market Playbook

- ★ ES WEEKLY PIVOT 6447.92
- ★ NQ WEEKLY PIVOT 23499.83
- ★ Overnight Range
 - ES 33.25
 - NQ 145.50
- ★ VIX 15.17
- ★ **Bulls** need to hold above yest closes **6384** and **23582** -- **long** above these
- ★ Breakouts are above yesterdays highs **6496** and **23650** - **aggressive longs** (await for confirmation with a new high and a retest of the highs from above that holds)
- ★ **Bears** need under overnight lows **short under 6362** and **23462**
- ★ Breakdown is below yest lows **6364** and **23076** -- **aggressive shorts** (wait for confirmation with a new low and a retest of the lows from below that hold)
- ★ **RANGEBOUND: 2 Way trade long and shorts will work** to get the day done
- ★ Keep it simple and be patient for confirmation on either side or establish the range if we are going to be rangebound
- ★ Confirm rally continuation with sustained trade over the 30min IB High and likewise bearish under the IB Low

ECON:

- 10:00 am New home sales
- 3:15 pm Dallas Fed President Lorie Logan speaks

Pre-Market Trading Levels for today

GLOBEX

NQ

★ **HIGH:** 23607.50

★ **LOW:** 23462.00

★ **Bull Case** defend the 23333 to seek the 23412, 23500, 23612, 23633, 23750, 23812, 23833, 23912, 24000, 24106, 242520, 24312, 24333, 24412, 24500

★ **Bear Case** seal the 23612 to seek the 23500, 23412, 23333, 23312, 23250, 23106, 23000, 22912, 22833, 22812, 22750, 22633

★ **Overnight Range - 145.50**

NQ (Prev. Day)

★ High 23650.00

★ Low 23076.75

★ Close 23582.75

NQ (Week Open) 23602.00

S&P 500

★ **HIGH** - 6494.00

★ **LOW** - 6360.75

★ **Bull Case:** defend the 6450 to seek the 6462, 6477, 6488, 6500, 6512, 6526, 6533, 6550, 6562, 6577

★ **Bear Case:** seal the 6500 to seek the 6488, 6477, 6462, 6450, 6433, 6426, 6412, 6400, 6388, 6377, 6362, 6350, 6333, 6326

★ **Overnight Range** - 31.50

ES (Prev Day)

★ High 6496.25

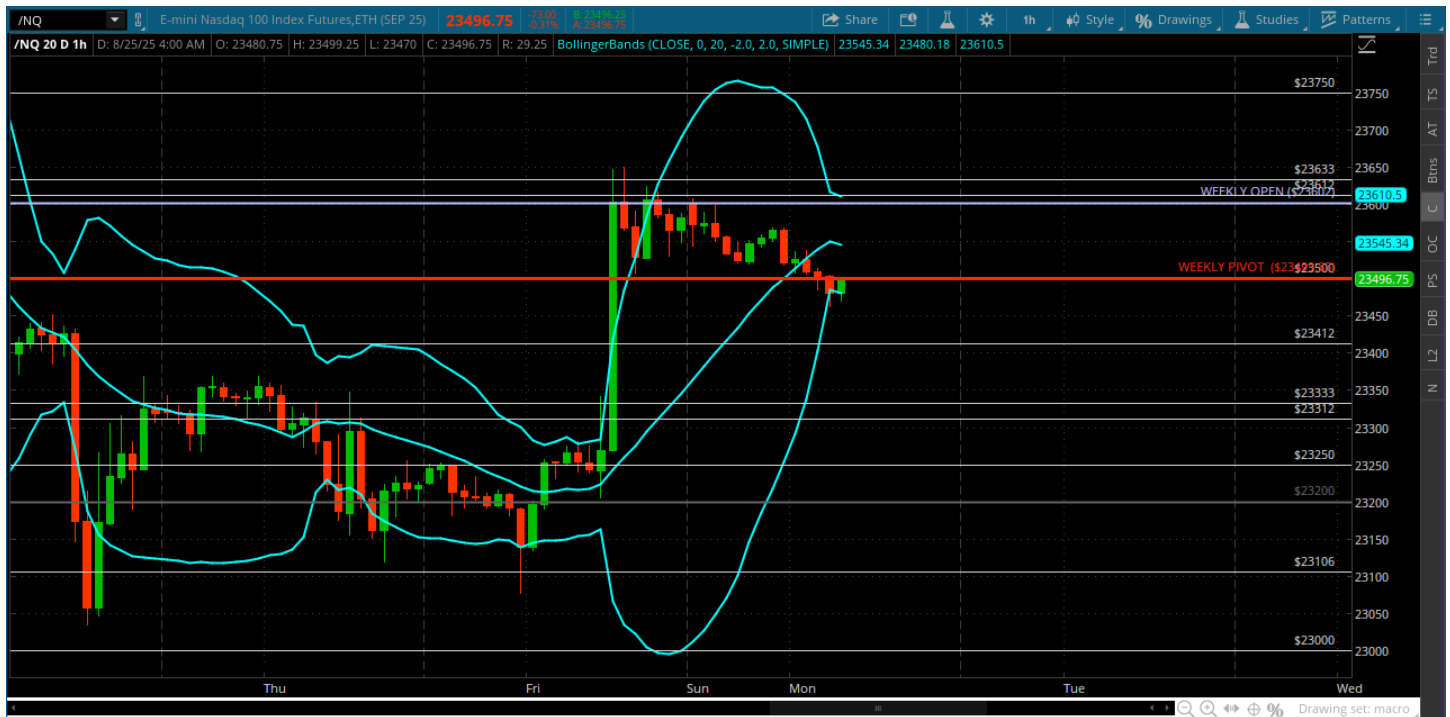
★ Low 6364.00

★ Close 6484.75

ES (Week Open) 6493.00

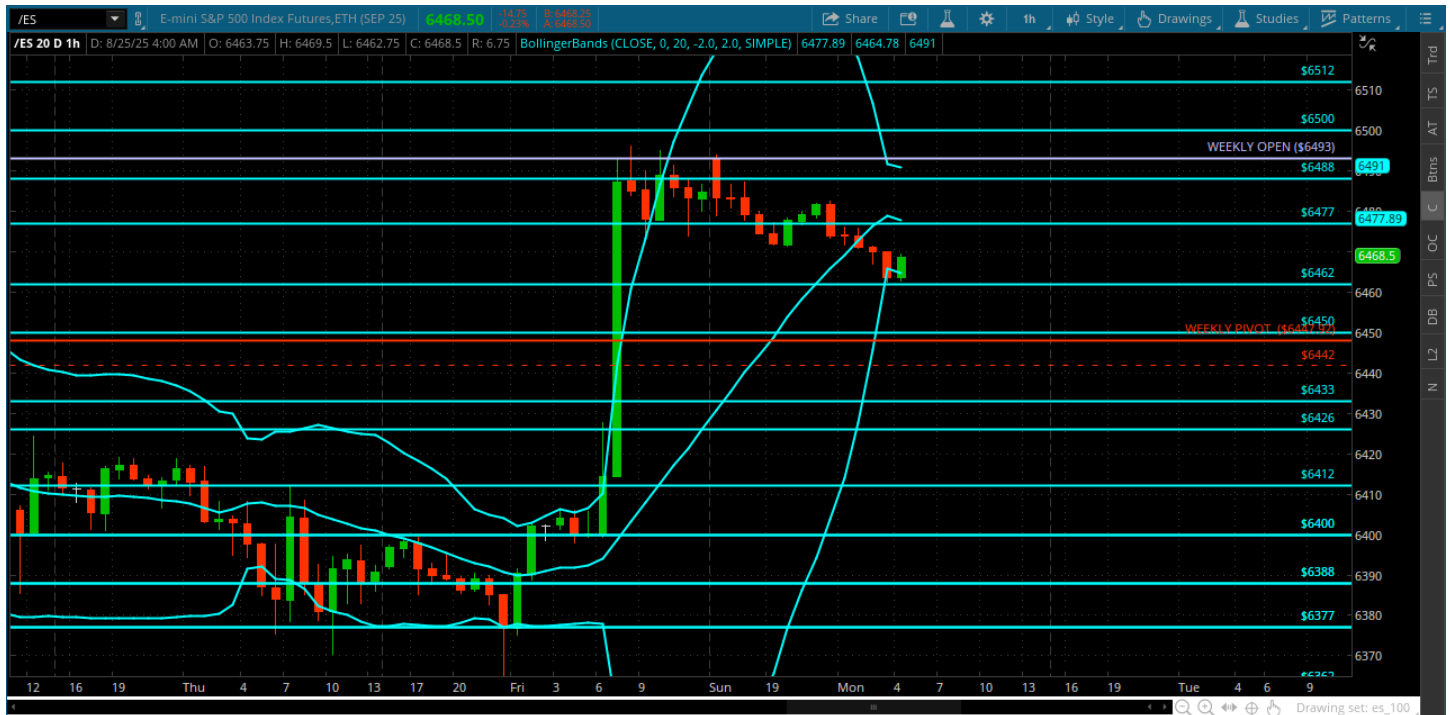
Pre-Market Charts to Watch

Monday, August 25, 2025 Pre-Market /NQ 1 Hour Chart



- We are testing weekly pivot and the halfway back on the Jackson Hole bar
- Bulls need to defend this area and reach back for the weekly open and the 23633
- Bears can target the low of the reaction if they can get under the 23412
- Today's close will be important re weekly pivot

Monday, August 25, 2025 Pre-Market /ES 1 Hour Chart



- 6450 is halfway back on the Jackson Hole bar and weekly pivot is there
- Would be great to get a test of that today
- Bulls need to defend that and go get the 6500
- Under that bears can target the low of the reaction bar and the 6412
- Keep it simple and lets see how we open

Disclaimer:

Disclaimer: Neither TheoTrade or any of its officers, directors, employees, other personnel, representatives, agents or independent contractors is, in such capacities, a licensed financial adviser, registered investment adviser, registered broker-dealer or FINRA|SIPC|NFA-member firm. TheoTrade does not provide investment or financial advice or make investment recommendations. TheoTrade is not in the business of transacting trades, nor does TheoTrade agree to direct your brokerage accounts or give trading advice tailored to your particular situation. Nothing contained in our content constitutes a solicitation, recommendation, promotion, or endorsement of any particular security, other investment product, transaction or investment. Trading Futures, Options on Futures, and retail off-exchange foreign currency transactions involves substantial risk of loss and is not suitable for all investors. You should carefully consider whether trading is suitable for you in light of your circumstances, knowledge, and financial resources. You may lose all or more of your initial investment. Opinions, market data, and recommendations are subject to change at any time. Past Performance is not necessarily indicative of future results.