



Tony Rago's Pre-Market Playbook

★ Overnight Range

- ES 33.00
- NQ 148.75

★ VIX 15.52

- ★ **Bulls** need to hold above yest closes **6359** and **23502** -- long above these
- ★ Breakouts are above yesterdays highs **6494** and **23616** - aggressive longs (await for confirmation with a new high and a retest of the highs from above that holds)
- ★ **Bears** need under overnight lows **short under 6330** and **23371**
- ★ Breakdown is below yest lows **6343** and **23443** -- aggressive shorts (wait for confirmation with a new low and a retest of the lows from below that hold)
- ★ **RANGEBOUND: 2 Way trade long and shorts will work** to get the day done
- ★ Keep it simple and be patient for confirmation on either side or establish the range if we are going to be rangebound
- ★ Confirm rally continuation with sustained trade over the 30min IB High and likewise bearish under the IB Low

ECON:

- 8:30 am Durable-goods orders
- 8:30 am Richmond Fed President Tom Barkin speaks
- 9:00 am S&P Case-Shiller home price index
- 10:00 am Consumer confidence

Pre-Market Trading Levels for today

GLOBEX

NQ

★ **HIGH:** 23520.25

★ **LOW:** 23371.50

★ **Bull Case** defend the 23333 to seek the 23412, 23500, 23612, 23633, 23750, 23812, 23833, 23912, 24000, 24106, 242520, 24312, 24333, 24412, 24500

★ **Bear Case** seal the 23612 to seek the 23500, 23412, 23333, 23312, 23250, 23106, 23000, 22912, 22833, 22812, 22750, 22633

★ **Overnight Range - 148.75**

NQ (Prev. Day)

★ High 23616.25

★ Low 23443.25

★ Close 23502.25

NQ (Week Open) 23602.00

S&P 500

★ **HIGH** - 6463.75

★ **LOW** - 6330.75

★ **Bull Case:** defend the 6433 to seek the 6450, 6462, 6477, 6488, 6500, 6512, 6526, 6533, 6550, 6562, 6577

★ **Bear Case:** seal the 66488 to seek the 6477, 6462, 6450, 6433, 6426, 6412, 6400, 6388, 6377, 6362, 6350, 6333, 6326

★ **Overnight Range** - 33.00

ES (Prev Day)

★ High 6494.00

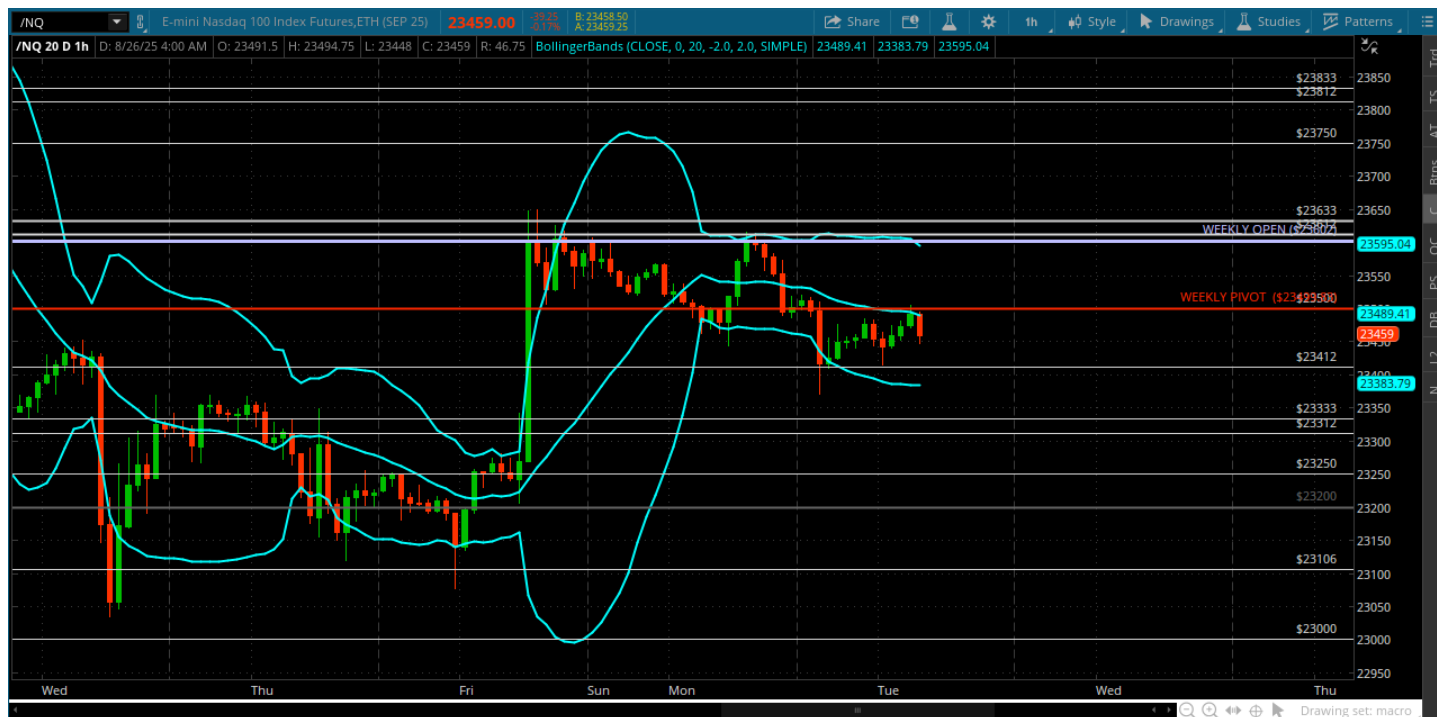
★ Low 6543.00

★ Close 6459.50

ES (Week Open) 6493.00

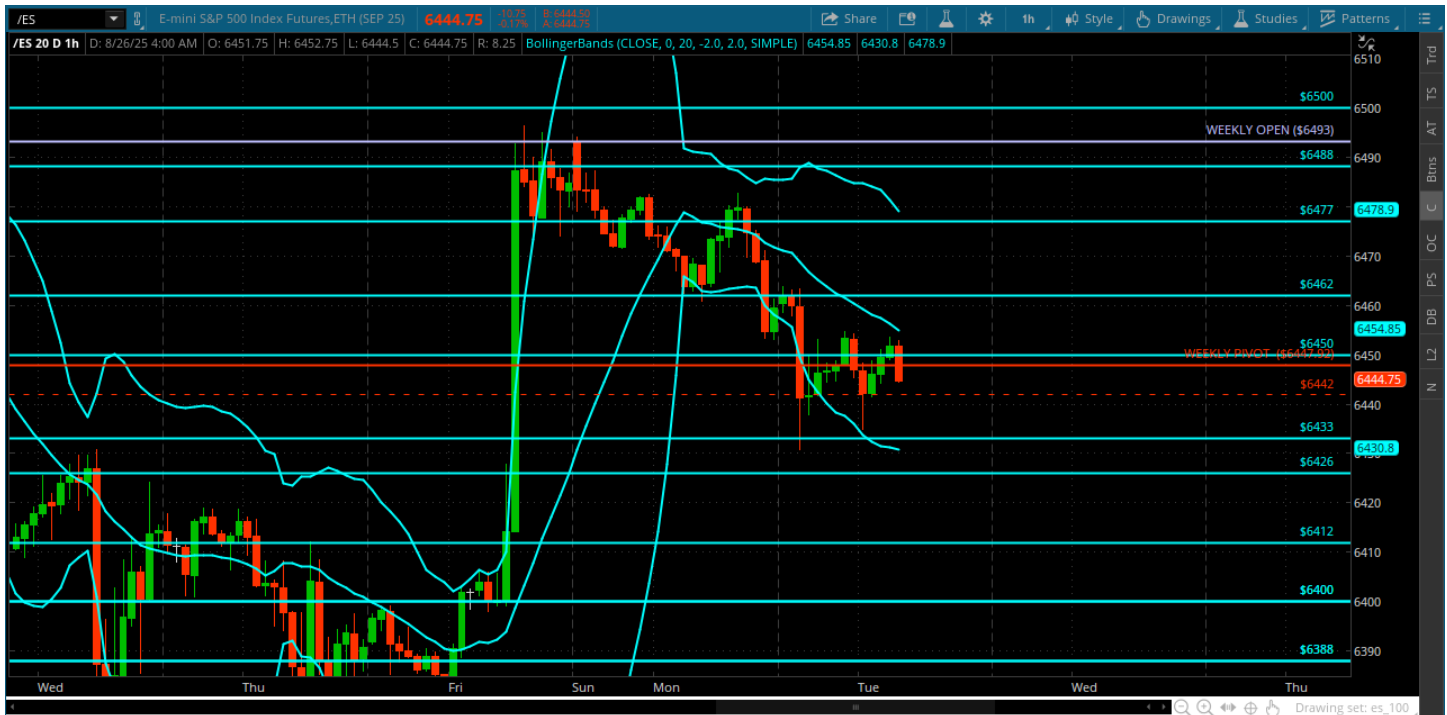
Pre-Market Charts to Watch

Tuesday, August 26, 2025 Pre-Market /NQ 1 Hour Chart



- Price closed right on weekly pivot and spent the overnight session underneath it
- Can bears do something with that today? 23500 is the bull/bear for today
- Above dip buyers can step in and get some traction
- Below it bears can seek the Jackson Hole low 23250

Tuesday, August 26, 2025 Pre-Market /ES 1 Hour Chart



- 6433 gets a test overnight and holds so far – bulls need to convert the 6450 as support and move to the 6462 and back to the 6477
- Bears need to hold price under the 6450 and weekly pivot and go after the overnight lows and the 6426 then the Jackson Hole low 6412

Disclaimer:

Disclaimer: Neither TheoTrade or any of its officers, directors, employees, other personnel, representatives, agents or independent contractors is, in such capacities, a licensed financial adviser, registered investment adviser, registered broker-dealer or FINRA|SIPC|NFA-member firm. TheoTrade does not provide investment or financial advice or make investment recommendations. TheoTrade is not in the business of transacting trades, nor does TheoTrade agree to direct your brokerage accounts or give trading advice tailored to your particular situation. Nothing contained in our content constitutes a solicitation, recommendation, promotion, or endorsement of any particular security, other investment product, transaction or investment. Trading Futures, Options on Futures, and retail off-exchange foreign currency transactions involves substantial risk of loss and is not suitable for all investors. You should carefully consider whether trading is suitable for you in light of your circumstances, knowledge, and financial resources. You may lose all or more of your initial investment. Opinions, market data, and recommendations are subject to change at any time. Past Performance is not necessarily indicative of future results.