



## *Tony Rago's Pre-Market Playbook*

---

### ★ Overnight Range

- ES 35.75
- NQ 174.50

### ★ VIX 14.50

- ★ **Bulls** need to hold above yest closes **6385 and 23542** -- long above these
- ★ Breakouts are above yesterdays highs **6505 and 23689** - aggressive longs (await for confirmation with a new high and a retest of the highs from above that holds)
- ★ **Bears** need under overnight lows **short under 6471 and 23487**
- ★ Breakdown is below yest lows **6459 and 23434** -- aggressive shorts (wait for confirmation with a new low and a retest of the lows from below that hold)
- ★ **RANGEBOUND: 2 Way trade long and shorts will work** to get the day done
- ★ Keep it simple and be patient for confirmation on either side or establish the range if we are going to be rangebound
- ★ Confirm rally continuation with sustained trade over the 30min IB High and likewise bearish under the IB Low

### ECON:

- 8:30 am Initial jobless claims
- 8:30 am GDP (First revision)
- 10:00 am Pending home sales

## *Pre-Market Trading Levels for today*

---

### GLOBEX

#### NQ

★ **HIGH:** 23662.00

★ **LOW:** 23487.50

★ **Bull Case** defend the 23412 to seek the 23500, 23612, 23633, 23750, 23812, 23833, 23912, 24000, 24106, 242520, 24312, 24333, 24412, 24500

★ **Bear Case** seal the 23750 to seek the 23633, 23612, 23500, 23412, 23333, 23312, 23250, 23106, 23000, 22912, 22833, 22812, 22750, 22633

★ **Overnight Range - 174.50**

#### NQ (Prev. Day)

★ High 23689.00

★ Low 23434.75

★ Close 23542.00

**NQ (Week Open) 23602.00**

## S&P 500

★ **HIGH** - 6506.75

★ **LOW** - 6471.00

★ **Bull Case:** defend the 6462 to seek the 6477, 6488, 6500, 6512, 6526, 6533, 6550, 6562, 6577

★ **Bear Case:** seal the 6500 to seek the 6488, 6477, 6462, 6450, 6433, 6426, 6412, 6400, 6388, 6377, 6362, 6350, 6333, 6326

★ **Overnight Range** - 35.75

## ES (Prev Day)

★ High 6505.50

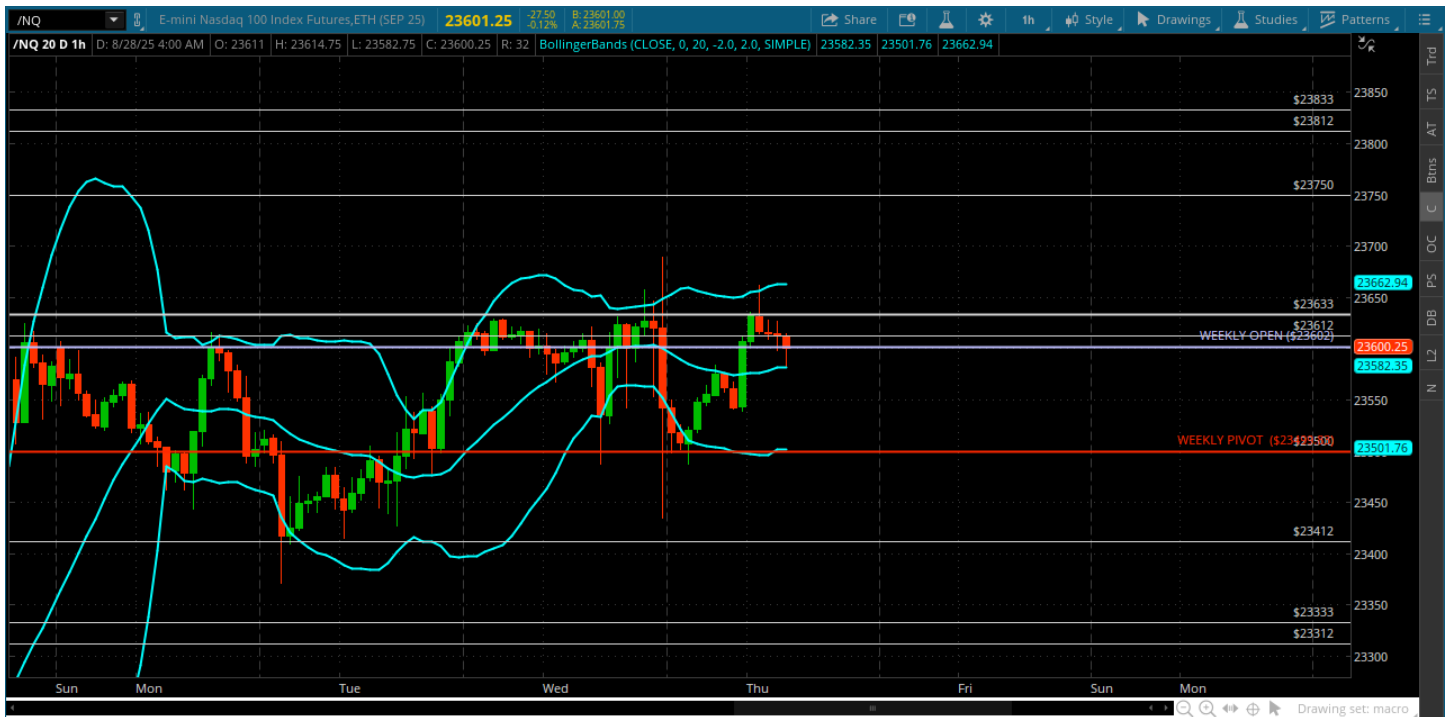
★ Low 6459.25

★ Close 6485.25

**ES (Week Open) 6493.00**

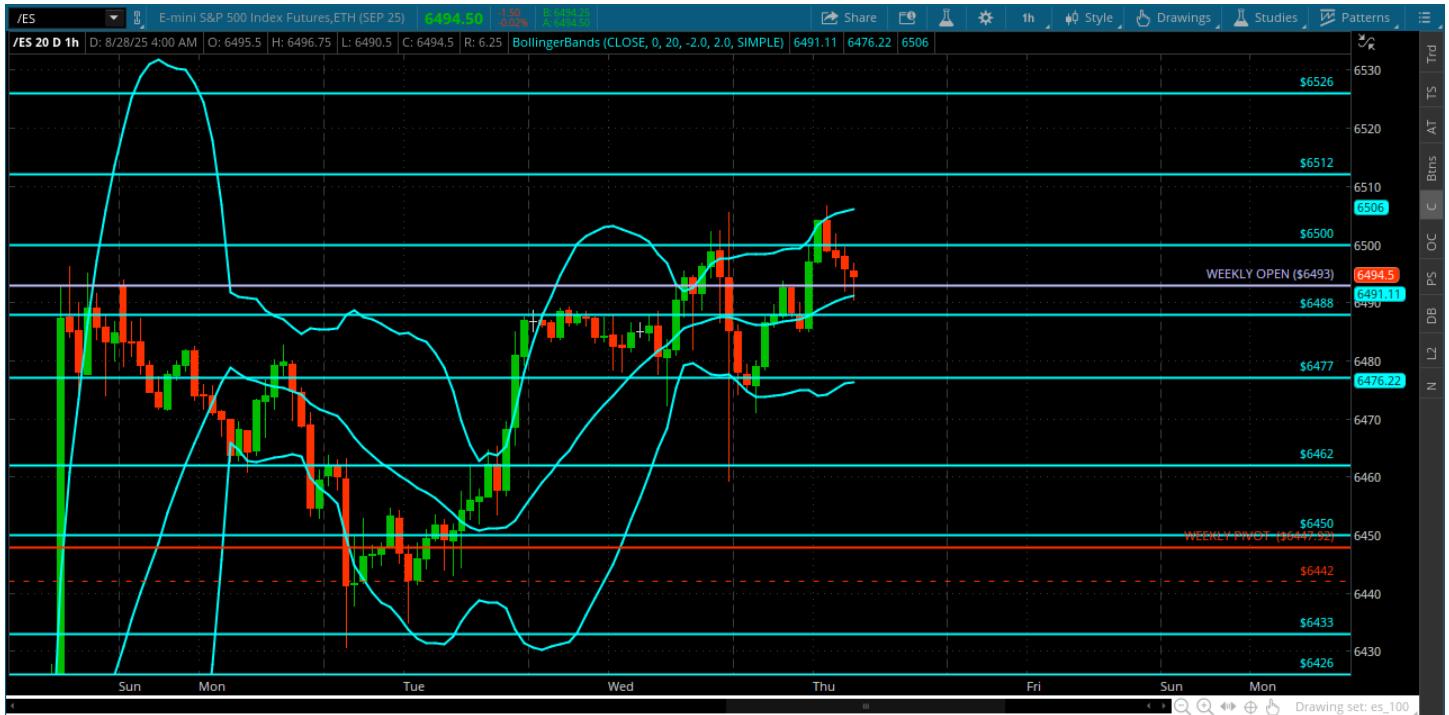
## Pre-Market Charts to Watch

### Thursday, August 28, 2025 Pre-Market /NQ 1 Hour Chart



- Still stuck in this zone -- Bulls cant get thru the 23633
- They need to push thru and breakout to the 23750, 23812
- Bears need under the low from the NVDA reaction 23434
- Keep it simple and trade the range until it breaks

## Thursday, August 27, 2025 Pre-Market /ES 1 Hour Chart



- Finally a poke above the 6500 and then quickly back under
- Bulls are trying to breakout but cant find any buyers to join them above the 6500 yet
- Will today be the day?
- Bears need under the 6477 and go after the NVDA reaction low 6459

*Disclaimer:*

Disclaimer: Neither TheoTrade or any of its officers, directors, employees, other personnel, representatives, agents or independent contractors is, in such capacities, a licensed financial adviser, registered investment adviser, registered broker-dealer or FINRA|SIPC|NFA-member firm. TheoTrade does not provide investment or financial advice or make investment recommendations. TheoTrade is not in the business of transacting trades, nor does TheoTrade agree to direct your brokerage accounts or give trading advice tailored to your particular situation. Nothing contained in our content constitutes a solicitation, recommendation, promotion, or endorsement of any particular security, other investment product, transaction or investment. Trading Futures, Options on Futures, and retail off-exchange foreign currency transactions involves substantial risk of loss and is not suitable for all investors. You should carefully consider whether trading is suitable for you in light of your circumstances, knowledge, and financial resources. You may lose all or more of your initial investment. Opinions, market data, and recommendations are subject to change at any time. Past Performance is not necessarily indicative of future results.