



Tony Rago's Pre-Market Playbook

★ Overnight Range

- ES 29.25
- NQ 149.50

★ VIX 14.56

- ★ **Bulls** need to hold above yest closes **6516 and 23762** -- long above these
- ★ Breakouts are above yesterdays highs **6523 and 23803** - **aggressive longs** (await for confirmation with a new high and a retest of the highs from above that holds)
- ★ **Bears** need under overnight lows **short under 6488 and 23612**
- ★ Breakdown is below yest lows **6471 and 23487** -- **aggressive shorts** (wait for confirmation with a new low and a retest of the lows from below that hold)
- ★ **RANGEBOUND: 2 Way trade long and shorts will work** to get the day done
- ★ Keep it simple and be patient for confirmation on either side or establish the range if we are going to be rangebound
- ★ Confirm rally continuation with sustained trade over the 30min IB High and likewise bearish under the IB Low

ECON:

- 8:30 am PCE index
- 8:30 am Advanced retail inventories
- 8:30 am Advanced wholesale inventories
- 9:45 am Chicago Business Barometer (PMI)
- 10:00 am Consumer sentiment (final)

Pre-Market Trading Levels for today

GLOBEX

NQ

★ **HIGH:** 23762.00

★ **LOW:** 23612.50

★ **Bull Case** defend the 23500 to seek the 23612, 23633, 23750, 23812, 23833, 23912, 24000, 24106, 242520, 24312, 24333, 24412, 24500

★ **Bear Case** seal the 23750 to seek the 23633, 23612, 23500, 23412, 23333, 23312, 23250, 23106, 23000, 22912, 22833, 22812, 22750, 22633

★ **Overnight Range - 149.50**

NQ (Prev. Day)

★ High 23803.75

★ Low 23487.50

★ Close 23762.00

NQ (Week Open) 23602.00

S&P 500

★ **HIGH** - 6518.00

★ **LOW** - 6488.75

★ **Bull Case:** defend the 6477 to seek the 6488, 6500, 6512, 6526, 6533, 6550, 6562, 6577

★ **Bear Case:** seal the 6512 to seek the 6500, 6488, 6477, 6462, 6450, 6433, 6426, 6412, 6400, 6388, 6377, 6362, 6350, 6333, 6326

★ **Overnight Range** - 29.25

ES (Prev Day)

★ High 6523.00

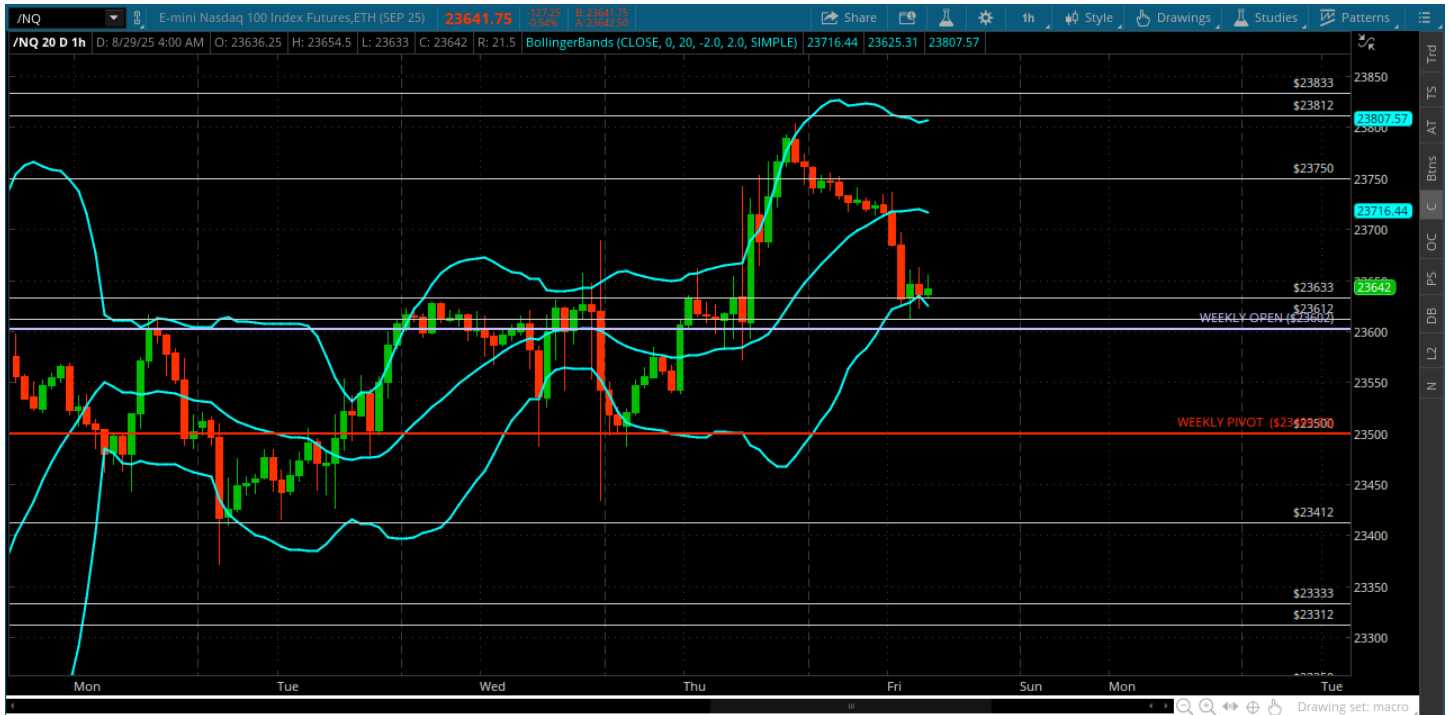
★ Low 6471.00

★ Close 6516.25

ES (Week Open) 6493.00

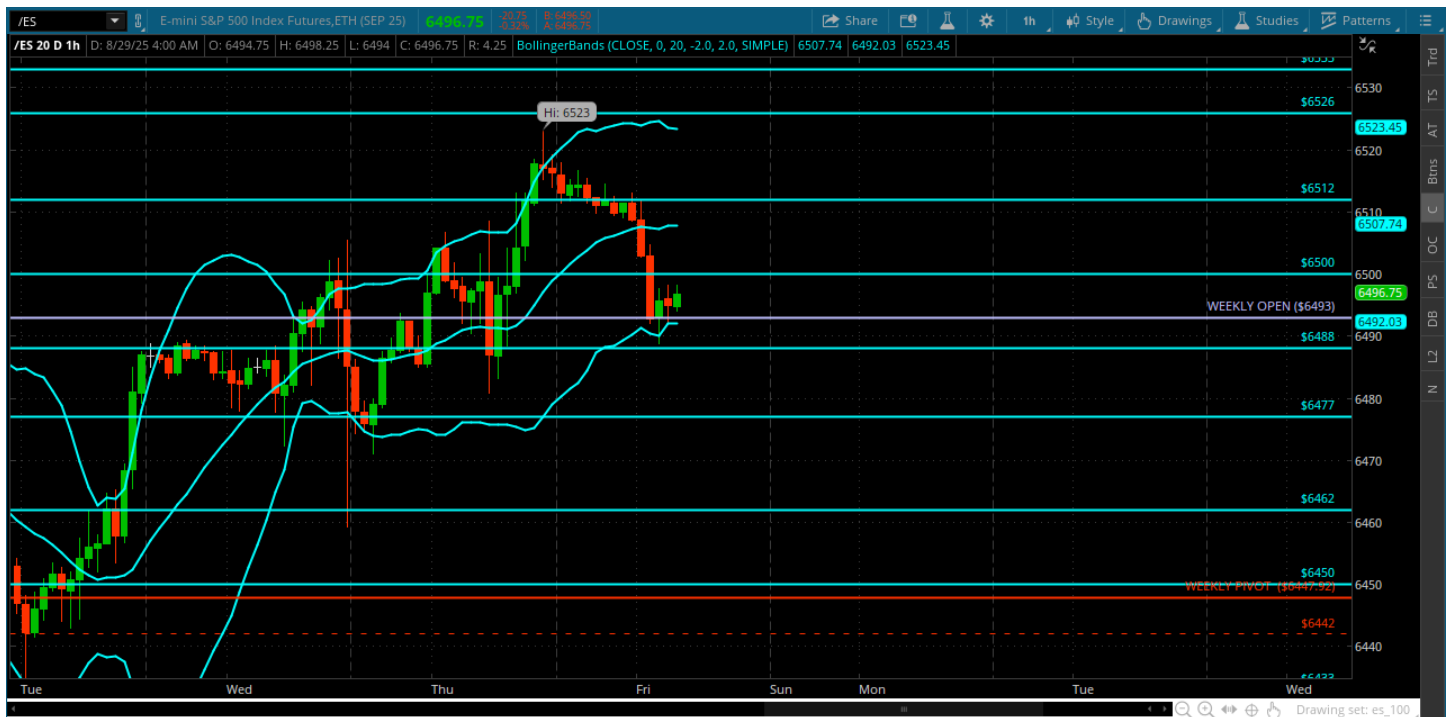
Pre-Market Charts to Watch

Friday, August 29, 2025 Pre-Market /NQ 1 Hour Chart



- Well we pushed thru the zone briefly and right back into it
- Expecting to hang in this area today barring any news – should be a quiet day as we head into the labor day weekend.
- Will be waiting out the morning econ to see what sets up for us

Friday, August 29, 2025 Pre-Market /ES 1 Hour Chart



- ES achieves new highs and back to the 6500
- Not expecting much today
- Key is for bulls to hold the 6477 and close above the 6500 for the week
- We are right back to the weekly open so lets see if the bulls will defend this at the open

Disclaimer:

Disclaimer: Neither TheoTrade or any of its officers, directors, employees, other personnel, representatives, agents or independent contractors is, in such capacities, a licensed financial adviser, registered investment adviser, registered broker-dealer or FINRA|SIPC|NFA-member firm. TheoTrade does not provide investment or financial advice or make investment recommendations. TheoTrade is not in the business of transacting trades, nor does TheoTrade agree to direct your brokerage accounts or give trading advice tailored to your particular situation. Nothing contained in our content constitutes a solicitation, recommendation, promotion, or endorsement of any particular security, other investment product, transaction or investment. Trading Futures, Options on Futures, and retail off-exchange foreign currency transactions involves substantial risk of loss and is not suitable for all investors. You should carefully consider whether trading is suitable for you in light of your circumstances, knowledge, and financial resources. You may lose all or more of your initial investment. Opinions, market data, and recommendations are subject to change at any time. Past Performance is not necessarily indicative of future results.