



Tony Rago's Pre-Market Playbook

- ★ ES WEEKLY PIVOT 6467.42
- ★ NQ WEEKLY PIVOT 23533.50
- ★ Overnight Range
 - ES 28.00
 - NQ 141.00
- ★ VIX 15.64
- ★ **Bulls** need to hold above yest closes **6488 and 23673 -- long above these**
- ★ Breakouts are above yesterdays highs **6541 and 23902 - aggressive longs** (await for confirmation with a new high and a retest of the highs from above that holds)
- ★ **Bears** need under overnight lows **short under 6480 and 23650**
- ★ Breakdown is below yest lows **6452 and 23505 -- aggressive shorts** (wait for confirmation with a new low and a retest of the lows from below that hold)
- ★ **RANGEBOUND: 2 Way trade long and shorts will work** to get the day done
- ★ Keep it simple and be patient for confirmation on either side or establish the range if we are going to be rangebound
- ★ Confirm rally continuation with sustained trade over the 30min IB High and likewise bearish under the IB Low

ECON:

- 3:00 pm Consumer credit

Pre-Market Trading Levels for today

GLOBEX

NQ

★ **HIGH:** 23791.25

★ **LOW:** 23650.25

★ **Bull Case** defend the 23612 to seek the 23633, 23750, 23812, 23833, 23912, 24000, 24106, 24250, 24312, 24333

★ **Bear Case** seal the 23912 to seek the 23833, 23812, 23750, 23633, 23612, 23500, 23412, 23333, 23312, 23250, 23106, 23000, 22912, 22833, 22812, 22750, 22633

★ **Overnight Range - 141.00**

NQ (Prev. Day)

★ High 23902.00

★ Low 23505.00

★ Close 23673.25

NQ (Week Open) 23673.50

S&P 500

★ **HIGH** - 6508.25

★ **LOW** - 6480.25

★ **Bull Case:** defend the 6488 to seek the 6500, 6512, 6526, 6533, 6550, 6562, 6577, 6588, 6600, 6612

★ **Bear Case:** seal the 6550 to seek the 6533, 6526, 6512, 6500, 6488, 6477, 6462, 6450, 6433, 6426, 6412, 6400, 6388, 6377, 6362, 6350, 6333, 6326

★ **Overnight Range** - 28.00

ES (Prev Day)

★ High 6541.75

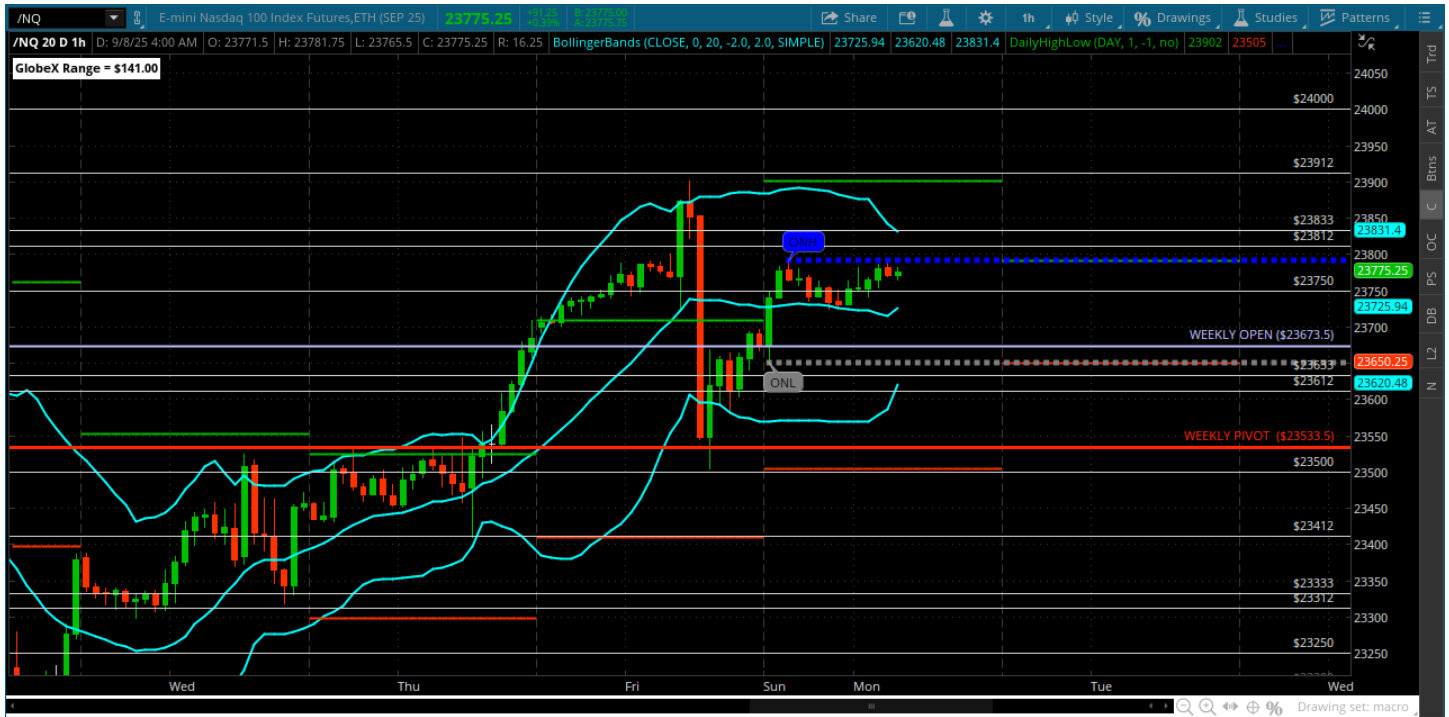
★ Low 6452.00

★ Close 6488.75

ES (Week Open) 6483.75

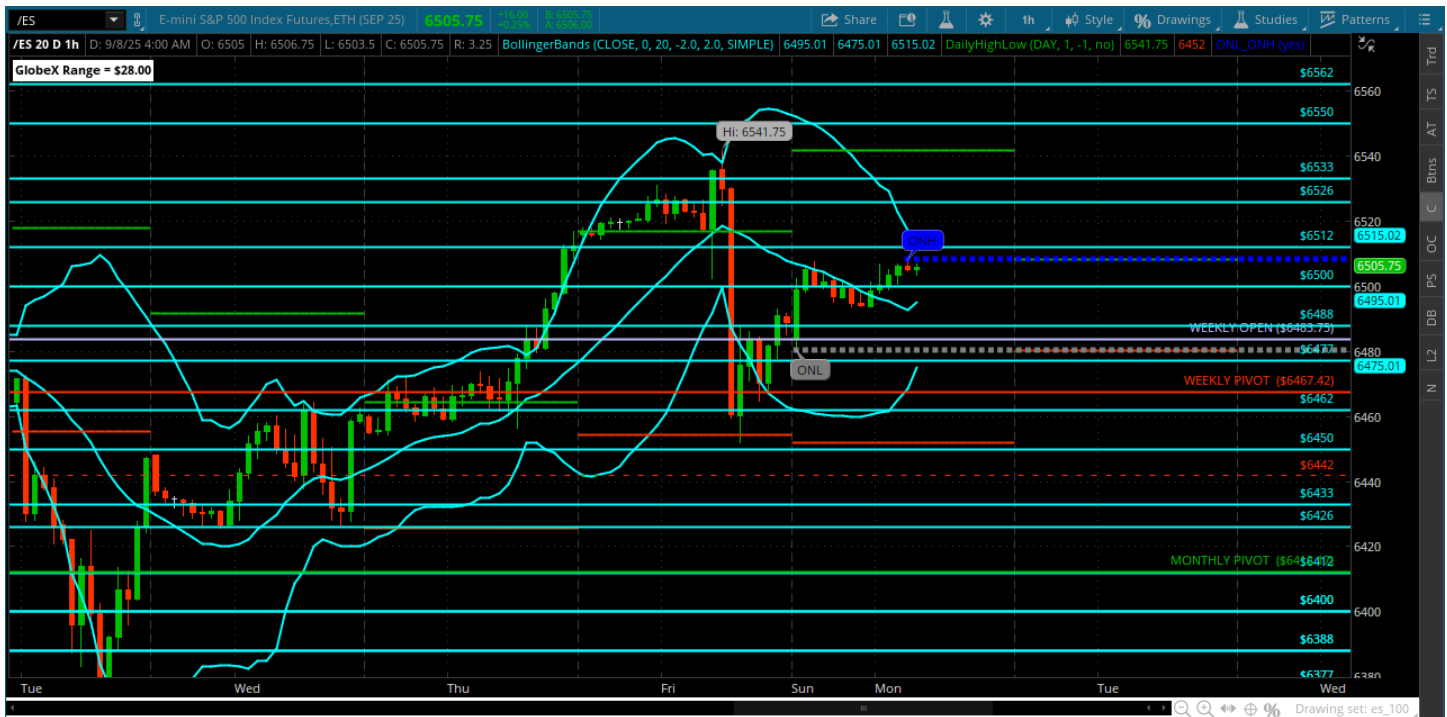
Pre-Market Charts to Watch

Monday, September 8, 2025 Pre-Market /NQ 1 Hour Chart



- Still inside of the big hourly bar from Friday.
- Keep it simple – breakout is above this 23850 and breakdown is below 23543
- Inside of the bar will be a decent 2-way trade so focus on SPOTS and where we are in the 100 HB

Monday, September 8, 2025 Pre-Market /ES 1 Hour Chart



- Still inside the big hourly bar from Friday
- Keep it simple - breakout is above 6530 and breakdown below the low 6460
- Inside the bar could be some good 2way trade 6512 is owed and if resis we see the 6500 and we could retest the weekly open

Disclaimer:

Disclaimer: Neither TheoTrade or any of its officers, directors, employees, other personnel, representatives, agents or independent contractors is, in such capacities, a licensed financial adviser, registered investment adviser, registered broker-dealer or FINRA|SIPC|NFA-member firm. TheoTrade does not provide investment or financial advice or make investment recommendations. TheoTrade is not in the business of transacting trades, nor does TheoTrade agree to direct your brokerage accounts or give trading advice tailored to your particular situation. Nothing contained in our content constitutes a solicitation, recommendation, promotion, or endorsement of any particular security, other investment product, transaction or investment. Trading Futures, Options on Futures, and retail off-exchange foreign currency transactions involves substantial risk of loss and is not suitable for all investors. You should carefully consider whether trading is suitable for you in light of your circumstances, knowledge, and financial resources. You may lose all or more of your initial investment. Opinions, market data, and recommendations are subject to change at any time. Past Performance is not necessarily indicative of future results.