



Tony Rago's Pre-Market Playbook

★ Overnight Range

- ES 38.50
- NQ 170.25

★ VIX 14.91

- ★ **Bulls** need to hold above yest closes **6530 and 23889** -- long above these
- ★ Breakouts are above yesterdays highs **6536 and 23921** - **aggressive longs** (await for confirmation with a new high and a retest of the highs from above that holds)
- ★ **Bears** need under overnight lows **short under 6526 and 23874**
- ★ Breakdown is below yest lows **6489 and 23726** -- **aggressive shorts** (wait for confirmation with a new low and a retest of the lows from below that hold)
- ★ **RANGEBOUND: 2 Way trade long and shorts will work** to get the day done
- ★ Keep it simple and be patient for confirmation on either side or establish the range if we are going to be rangebound
- ★ Confirm rally continuation with sustained trade over the 30min IB High and likewise bearish under the IB Low

ECON:

- 8:30 am Core PPI
- 10:00 am Wholesale inventories

Pre-Market Trading Levels for today

GLOBEX

NQ

★ **HIGH:** 24044.25

★ **LOW:** 23874.00

★ **Bull Case** defend the 23812 to seek the 23833, 23912, 24000, 24106, 24250, 24312, 24333

★ **Bear Case** seal the 24106 to seek the 24000, 23912, 23833, 23812, 23750, 23633, 23612, 23500, 23412, 23333, 23312, 23250, 23106, 23000, 22912, 22833, 22812, 22750, 22633

★ **Overnight Range - 170.25**

NQ (Prev. Day)

★ High 23921.25

★ Low 23726.00

★ Close 23889.75

NQ (Week Open) 23673.50

S&P 500

★ **HIGH** - 6565.25

★ **LOW** - 6526.75

★ **Bull Case:** defend the 6526 to seek the 6533, 6550, 6562, 6577, 6588, 6600, 6612

★ **Bear Case:** seal the 6550 to seek the 6533, 6526, 6512, 6500, 6488, 6477, 6462, 6450, 6433, 6426, 6412, 6400, 6388, 6377, 6362, 6350, 6333, 6326

★ **Overnight Range** - 38.50

ES (Prev Day)

★ High 6536.25

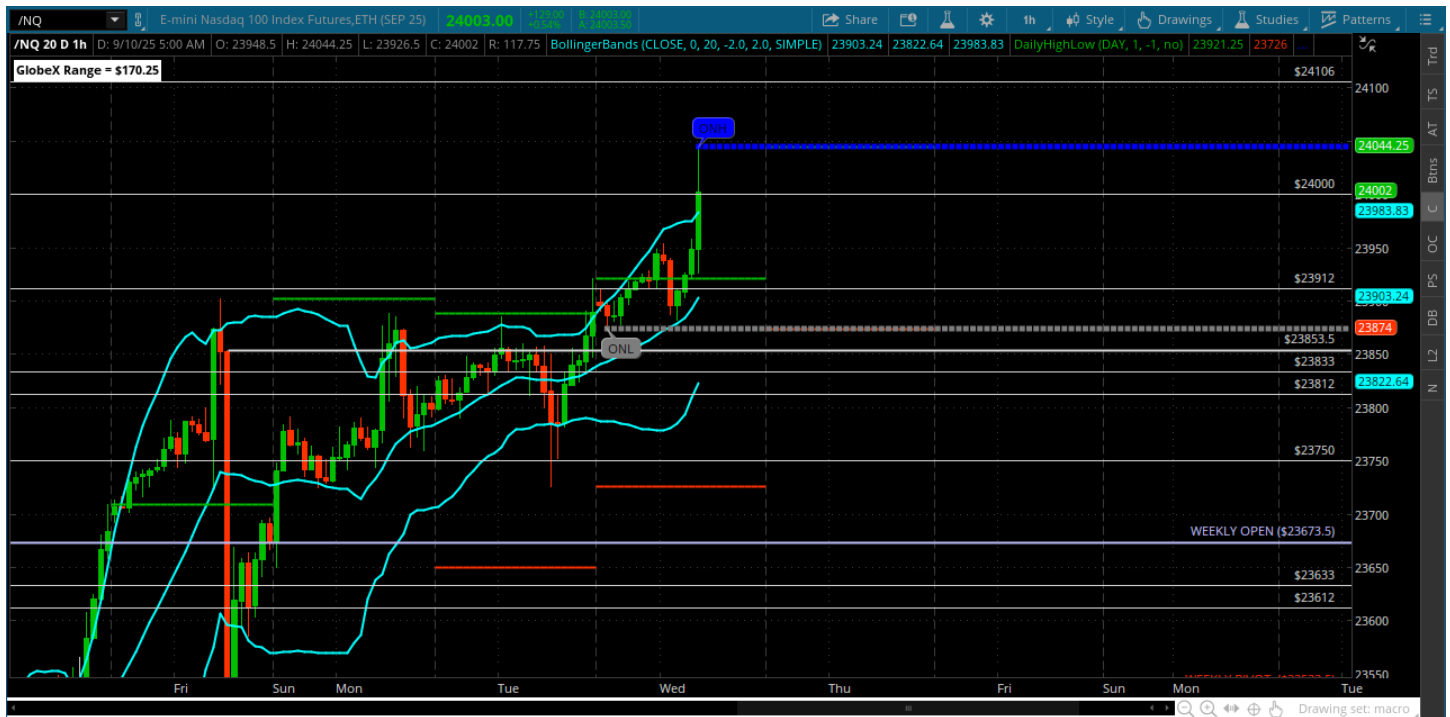
★ Low 6489.25

★ Close 6530.25

ES (Week Open) 6483.75

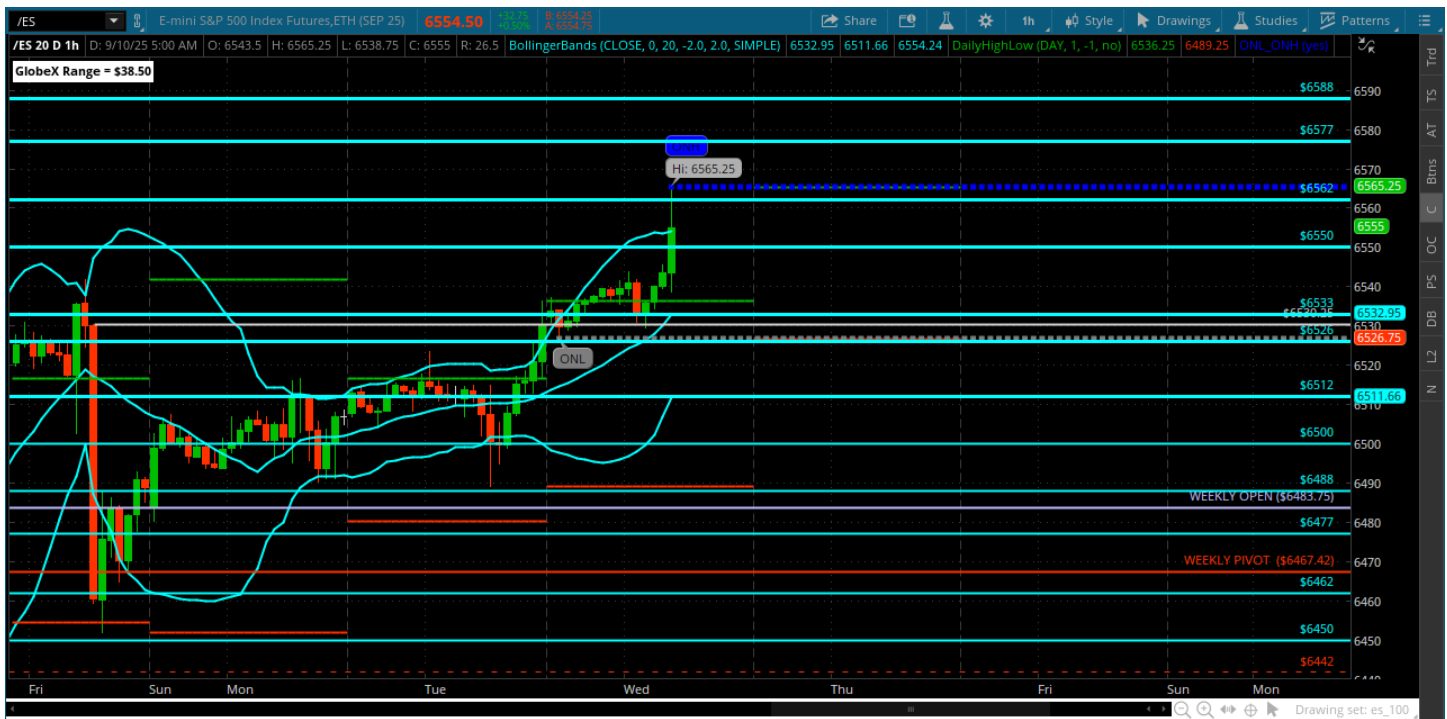
Pre-Market Charts to Watch

Wednesday, September 10, 2025 Pre-Market /NQ 1 Hour Chart



- Bulls broke out above the hourly bar we have been observing and now PPI brings us closer to testing the all time highs
- Bulls need to finish the move to achieve a new all time high
- Bears need to take out yesterdays lows under the 23750
- Lets see how the cash session reacts to PPI

Wednesday, September 10, 2025 Pre-Market /ES 1 Hour Chart



- PPI brings new highs so will be all about how we react in the cash session
- 6562 is resistance for now
- Would like to see a backtest of 6542 and 6533 for clues

Disclaimer:

Disclaimer: Neither TheoTrade or any of its officers, directors, employees, other personnel, representatives, agents or independent contractors is, in such capacities, a licensed financial adviser, registered investment adviser, registered broker-dealer or FINRA|SIPC|NFA-member firm. TheoTrade does not provide investment or financial advice or make investment recommendations. TheoTrade is not in the business of transacting trades, nor does TheoTrade agree to direct your brokerage accounts or give trading advice tailored to your particular situation. Nothing contained in our content constitutes a solicitation, recommendation, promotion, or endorsement of any particular security, other investment product, transaction or investment. Trading Futures, Options on Futures, and retail off-exchange foreign currency transactions involves substantial risk of loss and is not suitable for all investors. You should carefully consider whether trading is suitable for you in light of your circumstances, knowledge, and financial resources. You may lose all or more of your initial investment. Opinions, market data, and recommendations are subject to change at any time. Past Performance is not necessarily indicative of future results.