



Tony Rago's Pre-Market Playbook

★ Overnight Range

- ES 26.75
- NQ 138.00

★ VIX 15.04

- ★ **Bulls** need to hold above yest closes **6536 and 23858** -- long above these
- ★ Breakouts are above yesterdays highs **6565 and 24044** - aggressive longs (await for confirmation with a new high and a retest of the highs from above that holds)
- ★ **Bears** need under overnight lows **short under 6535 and 23852**
- ★ Breakdown is below yest lows **6522 and 23785** -- aggressive shorts (wait for confirmation with a new low and a retest of the lows from below that hold)
- ★ **RANGEBOUND: 2 Way trade long and shorts will work** to get the day done
- ★ Keep it simple and be patient for confirmation on either side or establish the range if we are going to be rangebound
- ★ Confirm rally continuation with sustained trade over the 30min IB High and likewise bearish under the IB Low

ECON:

- 8:30 am Core CPI
- 8:30 am Initial jobless claims
- 2:00 pm Monthly U.S. federal budge

Pre-Market Trading Levels for today

GLOBEX

NQ

★ **HIGH:** 23976.00

★ **LOW:** 23838.00

★ **Bull Case** defend the 23812 to seek the 23833, 23912, 24000, 24106, 24250, 24312, 24333

★ **Bear Case** seal the 24106 to seek the 24000, 23912, 23833, 23812, 23750, 23633, 23612, 23500, 23412, 23333, 23312, 23250, 23106, 23000, 22912, 22833, 22812, 22750, 22633

★ **Overnight Range - 138.00**

NQ (Prev. Day)

★ High 24044.25

★ Low 23785.00

★ Close 23858.00

NQ (Week Open) 23673.50

S&P 500

★ **HIGH** - 6562.25

★ **LOW** - 6535.50

★ **Bull Case:** defend the 6526 to seek the 6533, 6550, 6562, 6577, 6588, 6600, 6612

★ **Bear Case:** seal the 6550 to seek the 6533, 6526, 6512, 6500, 6488, 6477, 6462, 6450, 6433, 6426, 6412, 6400, 6388, 6377, 6362, 6350, 6333, 6326

★ **Overnight Range** - 26.75

ES (Prev Day)

★ High 6565.25

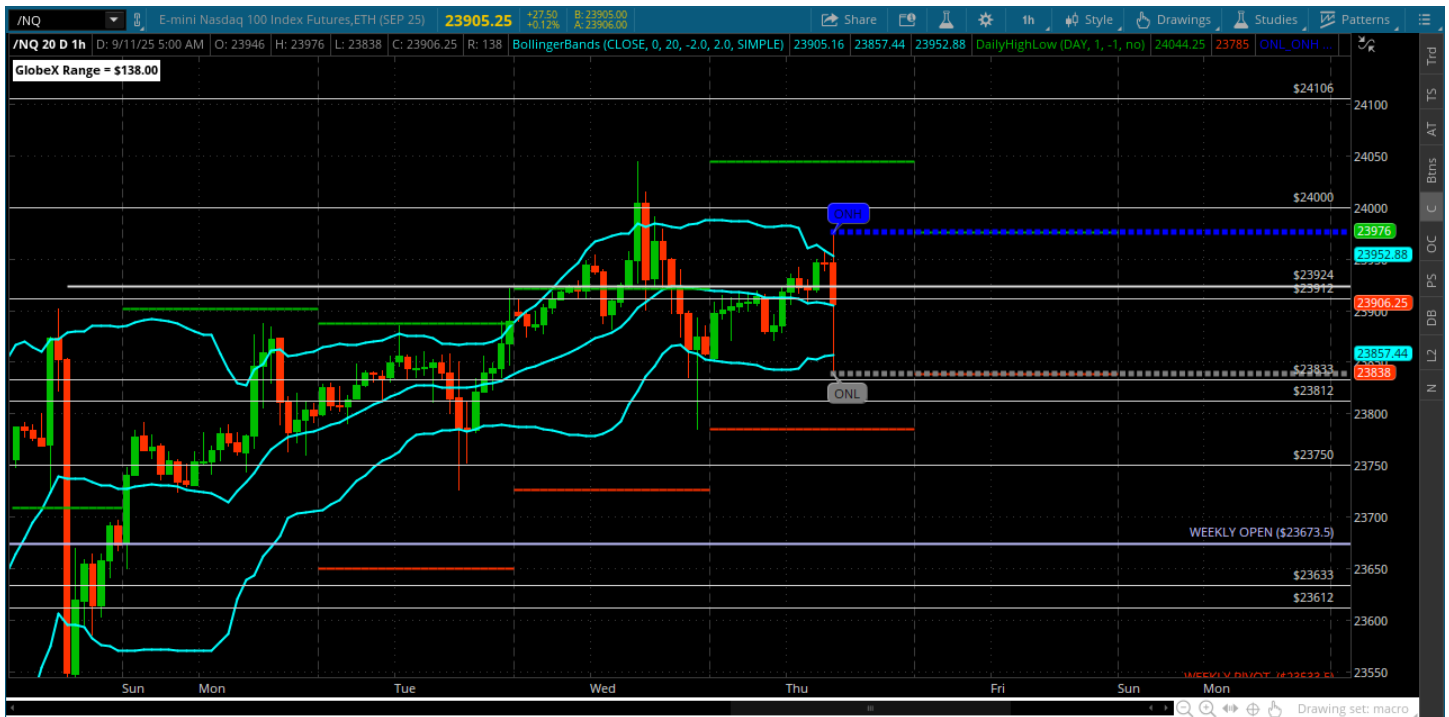
★ Low 6522.50

★ Close 6536.75

ES (Week Open) 6483.75

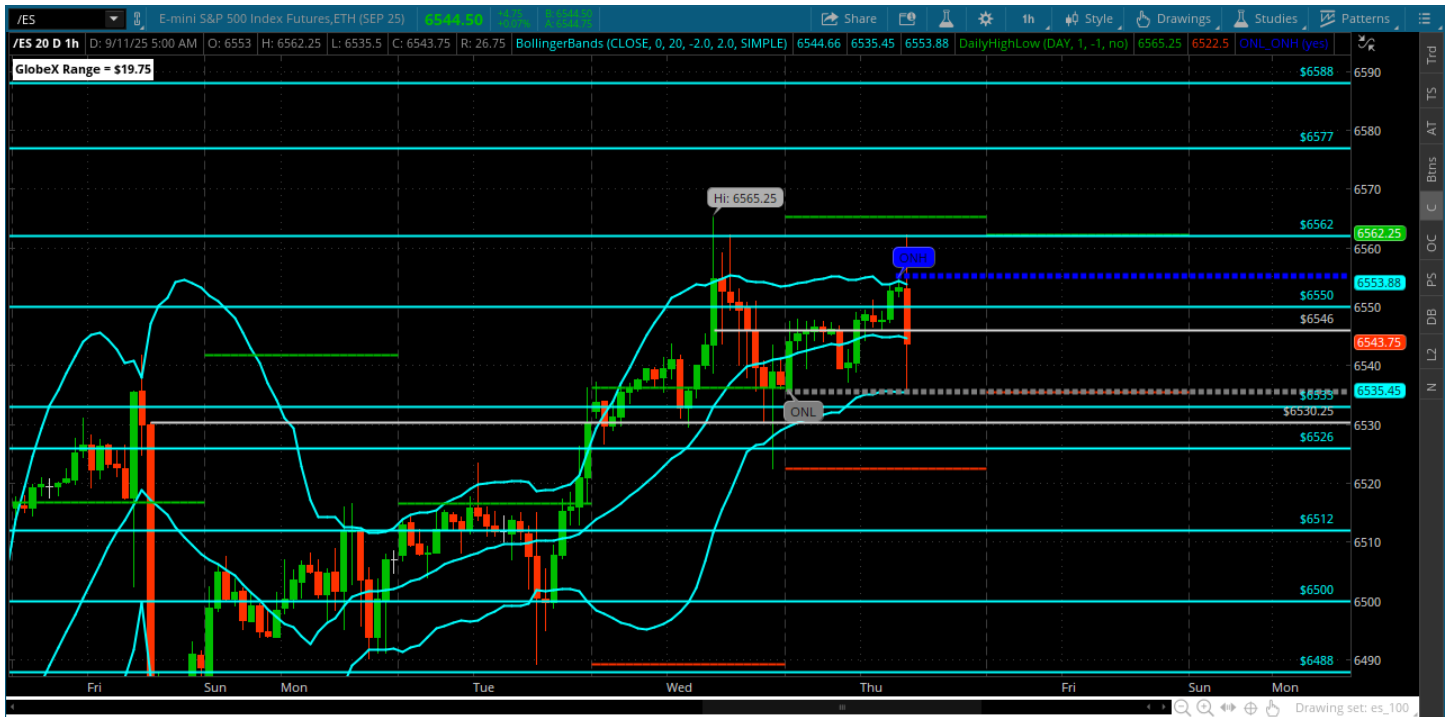
Pre-Market Charts to Watch

Thursday, September 11, 2025 Pre-Market /NQ 1 Hour Chart



- CPI keeps us in same range
- All about the 23812 holding here and bulls getting back to 24k
- Bears need under 23750

Thursday, September 11, 2025 Pre-Market /ES 1 Hour Chart



- CPI keeps us in same range and still looking for the same levels to hold
- 6562 is resistance for now
- Would like to see a backtest of 6542 and 6533 for clues

Disclaimer:

Disclaimer: Neither TheoTrade or any of its officers, directors, employees, other personnel, representatives, agents or independent contractors is, in such capacities, a licensed financial adviser, registered investment adviser, registered broker-dealer or FINRA|SIPC|NFA-member firm. TheoTrade does not provide investment or financial advice or make investment recommendations. TheoTrade is not in the business of transacting trades, nor does TheoTrade agree to direct your brokerage accounts or give trading advice tailored to your particular situation. Nothing contained in our content constitutes a solicitation, recommendation, promotion, or endorsement of any particular security, other investment product, transaction or investment. Trading Futures, Options on Futures, and retail off-exchange foreign currency transactions involves substantial risk of loss and is not suitable for all investors. You should carefully consider whether trading is suitable for you in light of your circumstances, knowledge, and financial resources. You may lose all or more of your initial investment. Opinions, market data, and recommendations are subject to change at any time. Past Performance is not necessarily indicative of future results.