



## *Tony Rago's Pre-Market Playbook*

---

### ★ Overnight Range

- ES 55.75
- NQ 267.50

### ★ VIX 14.92

- ★ **Bulls** need to hold above yest closes **6665 and 24500** -- long above these
- ★ Breakouts are above yesterdays highs **6686 and 24553** - **aggressive longs** (await for confirmation with a new high and a retest of the highs from above that holds)
- ★ **Bears** need under overnight lows **short under 6664 and 24495**
- ★ Breakdown is below yest lows **6611 and 24242** -- **aggressive shorts** (wait for confirmation with a new low and a retest of the lows from below that hold)
- ★ **RANGEBOUND: 2 Way trade long and shorts will work** to get the day done
- ★ Keep it simple and be patient for confirmation on either side or establish the range if we are going to be rangebound
- ★ Confirm rally continuation with sustained trade over the 30min IB High and likewise bearish under the IB Low

### ECON:

- 8:30 am Initial jobless claims
- 8:30 am Philadelphia Fed manufacturing survey
- 10:00 am U.S. leading economic indicators

## *Pre-Market Trading Levels for today*

---

### **GLOBEX**

#### **NQ**

★ **HIGH:** 24762.75

★ **LOW:** 24456.25

★ **Bull Case** defend the 24500 to seek the 24612, 24633, 24750, 24812, 24833, 24912, 25000, 25106

★ **Bear Case** seal the 24812 to seek the 24750, 24633, 24612, 24500, 24412, 24333, 24312, 24250, 24106, 24000, 23912, 23833, 23812, 23750, 23633

★ **Overnight Range - 267.50**

#### **NQ (Prev. Day)**

★ High 24553.00

★ Low 24242.00

★ Close 24502.00

**NQ (Week Open) 24353.00**

## S&P 500

★ **HIGH** - 6719.75

★ **LOW** - 6664.00

★ **Bull Case:** defend the 6662 to seek the 6677, 6688, 6700, 6712, 6726, 6733, 6750, 6762, 6777, 6788, 6800

★ **Bear Case:** seal the 6726 to seek the 6712, 6700, 6788, 6677, 6662, 6650, 6633, 6626, 6612, 6600, 6588, 6577, 6562, 6550, 6533, 6526, 6512, 6500

★ **Overnight Range** - 55.75

### ES (Prev Day)

★ High 6686.50

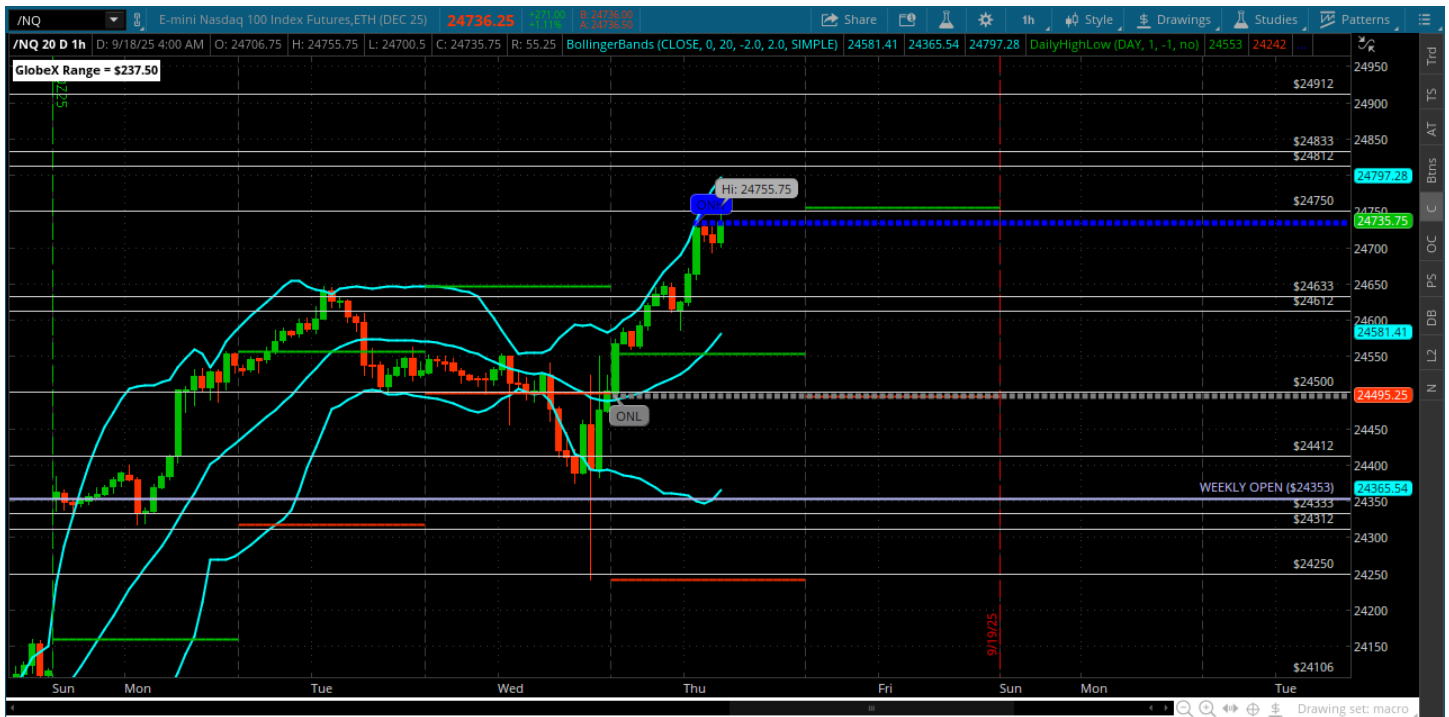
★ Low 6611.00

★ Close 6665.75

**ES (Week Open) 6645.00**

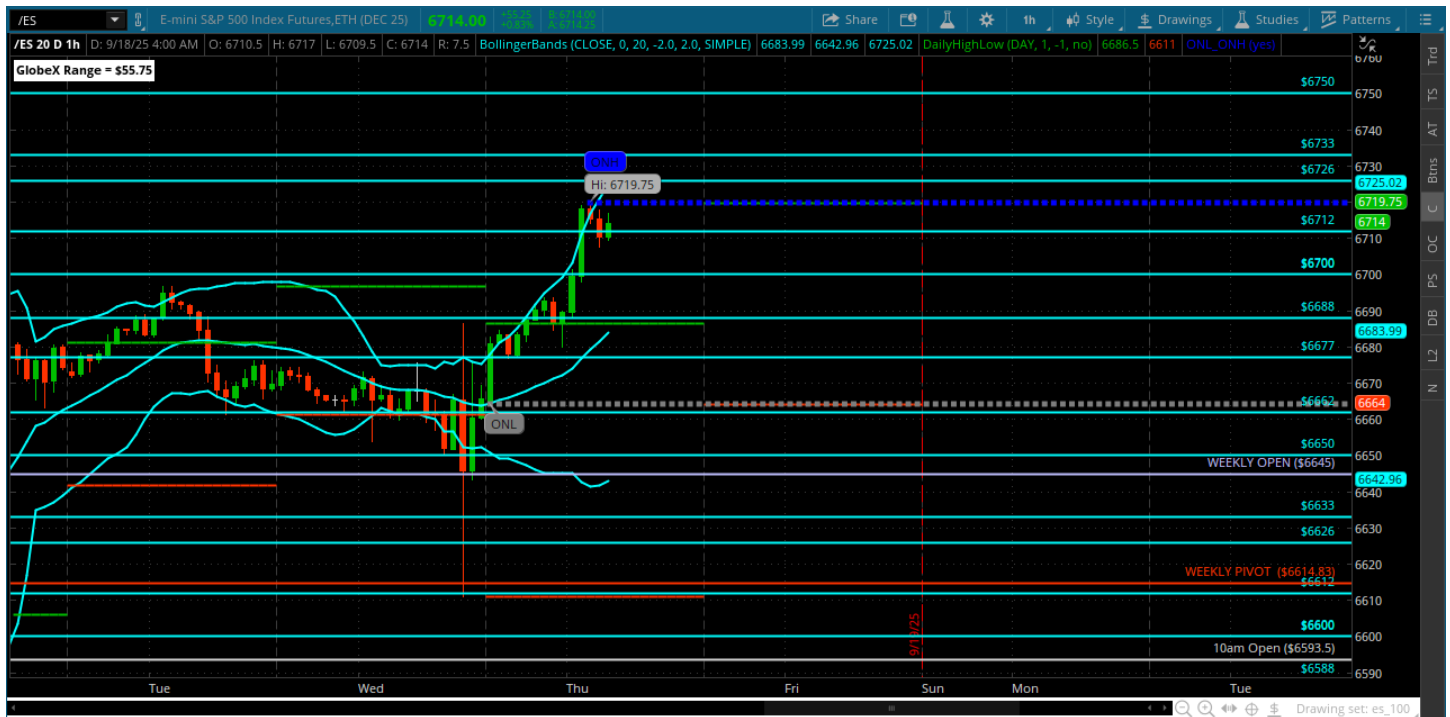
## Pre-Market Charts to Watch

### Thursday, September 18, 2025 Pre-Market /NQ 1 Hour Chart



- Pullback to the 24250 was the deal -- a 500 point ripper into the 25750 so far
- Market liked the rate cut -- this sets up the 25000 before a meaningful pullback
- Still have to consider that anything can happen but will be looking for pullbacks to get bought
- A pullback to the 25612 needs to hold and bulls need to push thru the 25750

## Thursday, September 18, 2025 Pre-Market /ES 1 Hour Chart



- Perfect example of a weekly pivot test from above
- It rejected to the upside for over 100 points
- This opens the 6726 and 6733 as long as the 6788 holds
- Looking for a pullback to the 6700 in RTH

*Disclaimer:*

Disclaimer: Neither TheoTrade or any of its officers, directors, employees, other personnel, representatives, agents or independent contractors is, in such capacities, a licensed financial adviser, registered investment adviser, registered broker-dealer or FINRA|SIPC|NFA-member firm. TheoTrade does not provide investment or financial advice or make investment recommendations. TheoTrade is not in the business of transacting trades, nor does TheoTrade agree to direct your brokerage accounts or give trading advice tailored to your particular situation. Nothing contained in our content constitutes a solicitation, recommendation, promotion, or endorsement of any particular security, other investment product, transaction or investment. Trading Futures, Options on Futures, and retail off-exchange foreign currency transactions involves substantial risk of loss and is not suitable for all investors. You should carefully consider whether trading is suitable for you in light of your circumstances, knowledge, and financial resources. You may lose all or more of your initial investment. Opinions, market data, and recommendations are subject to change at any time. Past Performance is not necessarily indicative of future results.