



Tony Rago's Pre-Market Playbook

★ Overnight Range

- ES 26.25
- NQ 94.00

★ VIX 15.58

- ★ **Bulls** need to hold above yest closes **6698** and **24713** -- long above these
- ★ Breakouts are above yesterdays highs **6720** and **24816** - **aggressive longs** (await for confirmation with a new high and a retest of the highs from above that holds)
- ★ **Bears** need under overnight lows **short under 6679** and **24655**
- ★ Breakdown is below yest lows **6664** and **24495** -- **aggressive shorts** (wait for confirmation with a new low and a retest of the lows from below that hold)
- ★ **RANGEBOUND: 2 Way trade long and shorts will work** to get the day done
- ★ Keep it simple and be patient for confirmation on either side or establish the range if we are going to be rangebound
- ★ Confirm rally continuation with sustained trade over the 30min IB High and likewise
- ★ bearish under the IB Low

ECON:

- 2:30 pm San Francisco Fed President Mary Daly speech

Pre-Market Trading Levels for today

GLOBEX

NQ

★ **HIGH:** 24754.75

★ **LOW:** 24655.00

★ **Bull Case** defend the 24612 to seek the 24633, 24750, 24812, 24833, 24912, 25000, 25106

★ **Bear Case** seal the 24812 to seek the 24750, 24633, 24612, 24500, 24412, 24333, 24312, 24250, 24106, 24000, 23912, 23833, 23812, 23750, 23633

★ **Overnight Range - 94.00**

NQ (Prev. Day)

★ High 24816.00

★ Low 24495.25

★ Close 24713.75

NQ (Week Open) 24353.00

S&P 500

★ **HIGH** - 6705.75

★ **LOW** - 6679.50

★ **Bull Case:** defend the 6662 to seek the 6677, 6688, 6700, 6712, 6726, 6733, 6750, 6762, 6777, 6788, 6800

★ **Bear Case:** seal the 6726 to seek the 6712, 6700, 6788, 6677, 6662, 6650, 6633, 6626, 6612, 6600, 6588, 6577, 6562, 6550, 6533, 6526, 6512, 6500

★ **Overnight Range** - 55.75

ES (Prev Day)

★ High 6719.75

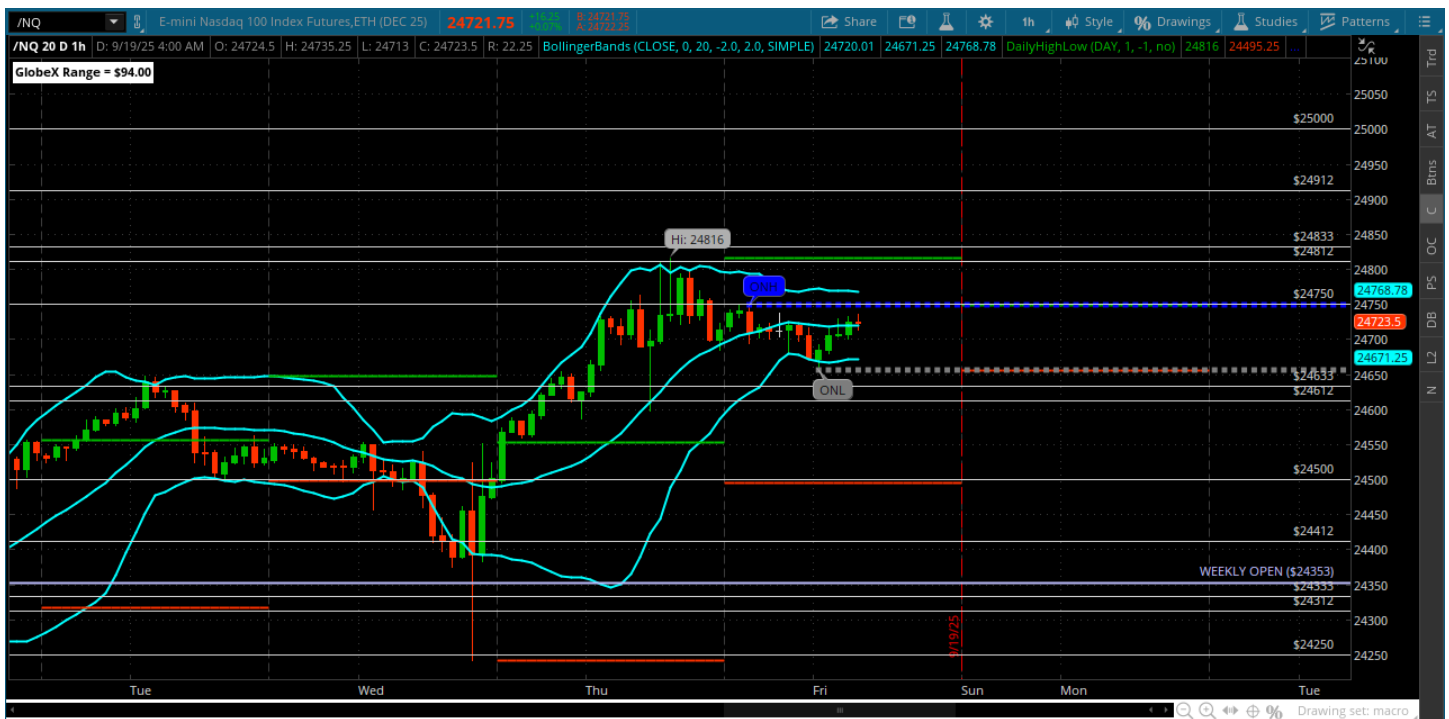
★ Low 6664.00

★ Close 6698.75

ES (Week Open) 6645.00

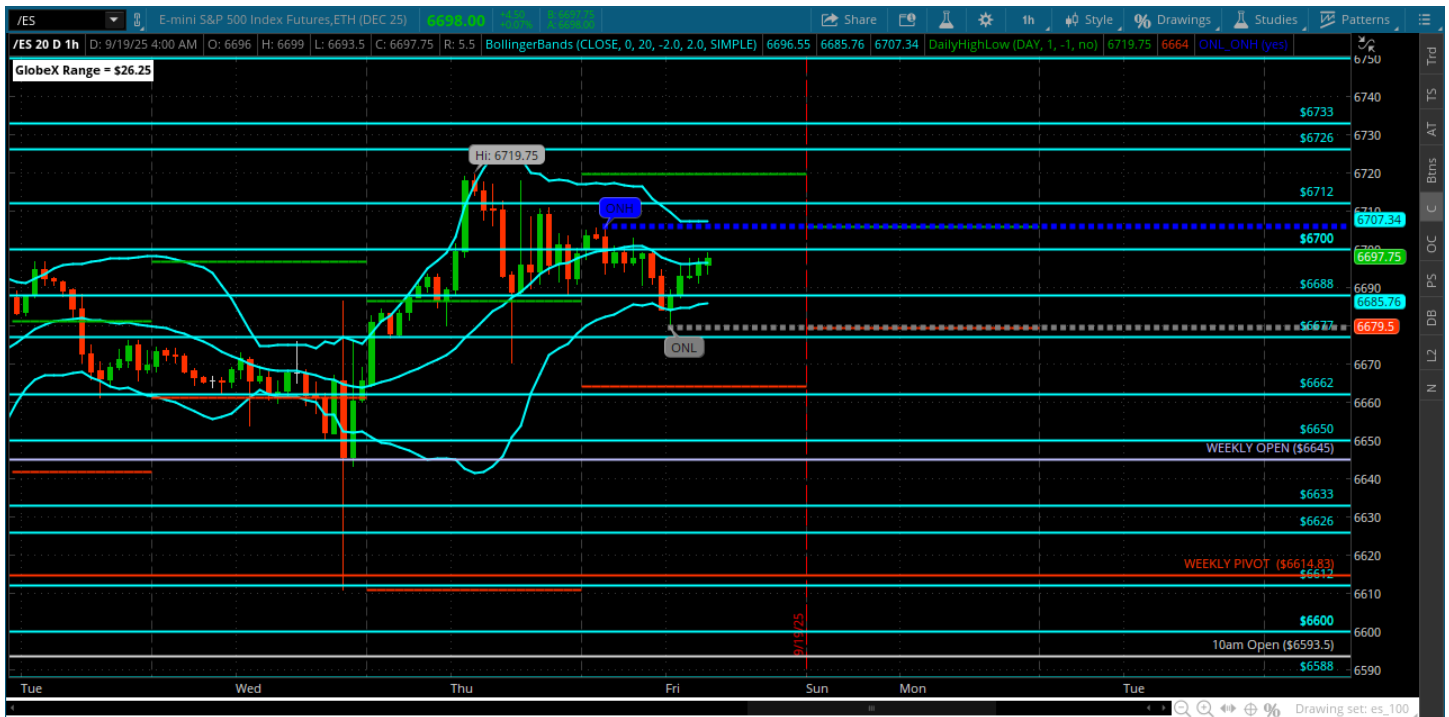
Pre-Market Charts to Watch

Friday, September 19, 2025 Pre-Market /NQ 1 Hour Chart



- Price is in a range between the 24612 and 24750
- This may be where we hang today but need to be ready for a move thru 24750 or below the 24612
- Bears want under the 24612 and then the 24500
- Bulls need to overcome the 750 and 812 to seek new highs

Friday, September 19, 2025 Pre-Market /ES 1 Hour Chart



- Hanging right in the middle of the the the most recent range 6712 - 6677
- We could range here between the 6712 and 6677 - they are both basically open for tests
- BIG expiration today so need to be ready for anything -- a break to new highs or below the 6670

Disclaimer:

Disclaimer: Neither TheoTrade or any of its officers, directors, employees, other personnel, representatives, agents or independent contractors is, in such capacities, a licensed financial adviser, registered investment adviser, registered broker-dealer or FINRA|SIPC|NFA-member firm. TheoTrade does not provide investment or financial advice or make investment recommendations. TheoTrade is not in the business of transacting trades, nor does TheoTrade agree to direct your brokerage accounts or give trading advice tailored to your particular situation. Nothing contained in our content constitutes a solicitation, recommendation, promotion, or endorsement of any particular security, other investment product, transaction or investment. Trading Futures, Options on Futures, and retail off-exchange foreign currency transactions involves substantial risk of loss and is not suitable for all investors. You should carefully consider whether trading is suitable for you in light of your circumstances, knowledge, and financial resources. You may lose all or more of your initial investment. Opinions, market data, and recommendations are subject to change at any time. Past Performance is not necessarily indicative of future results.