



## *Tony Rago's Pre-Market Playbook*

---

- ★ **ES WEEKLY PIVOT 6687.42**
- ★ **NQ WEEKLY PIVOT 24663.67**
- ★ **Overnight Range**
  - **ES 26.00**
  - **NQ 127.25**
- ★ **VIX 16.17**
- ★ **Bulls** need to hold above yest closes **6719 and 24831 -- long above these**
- ★ Breakouts are above yesterdays highs **6731 and 24888 - aggressive longs** (await for confirmation with a new high and a retest of the highs from above that holds)
- ★ **Bears** need under overnight lows **short under 6695 and 24748**
- ★ Breakdown is below yest lows **6679 and 24655 -- aggressive shorts** (wait for confirmation with a new low and a retest of the lows from below that hold)
- ★ **RANGEBOUND: 2 Way trade long and shorts will work** to get the day done
- ★ Keep it simple and be patient for confirmation on either side or establish the range if we are going to be rangebound
- ★ Confirm rally continuation with sustained trade over the 30min IB High and likewise
- ★ bearish under the IB Low

### **ECON:**

- 9:45 am New York Fed President John Williams speech
- 10:00 am St. Louis Fed President Alberto Musalem speech
- 12:00 pm Fed governor Stephen Miran speech
- 12:00 pm Cleveland Fed President Beth Hammack speech
- 12:00 pm Richmond Fed President Tom Barkin speech

## *Pre-Market Trading Levels for today*

---

### GLOBEX

#### NQ

★ **HIGH:** 24876.00

★ **LOW:** 24748.75

★ **Bull Case** defend the 24633 to seek the 24750, 24812, 24833, 24912, 25000, 25106, 25250, 25312

★ **Bear Case** seal the 24912 to seek the 24833, 24812, 24750, 24633, 24612, 24500, 24412, 24333, 24312, 24250, 24106, 24000, 23912, 23833, 23812, 23750, 23633

★ **Overnight Range - 127.25**

#### NQ (Prev. Day)

★ High 24888.00

★ Low 24655.00

★ Close 24831.00

**NQ (Week Open) 24353.00**

## S&P 500

★ **HIGH** - 6721.25

★ **LOW** - 6695.25

★ **Bull Case:** defend the 6688 to seek the 6688, 6700, 6712, 6726, 6733, 6750, 6762, 6777, 6788, 6800

★ **Bear Case:** seal the 6726 to seek the 6712, 6700, 6788, 6677, 6662, 6650, 6633, 6626, 6612, 6600, 6588, 6577, 6562, 6550, 6533, 6526, 6512, 6500

★ **Overnight Range** - 26.00

## ES (Prev Day)

★ High 6731.50

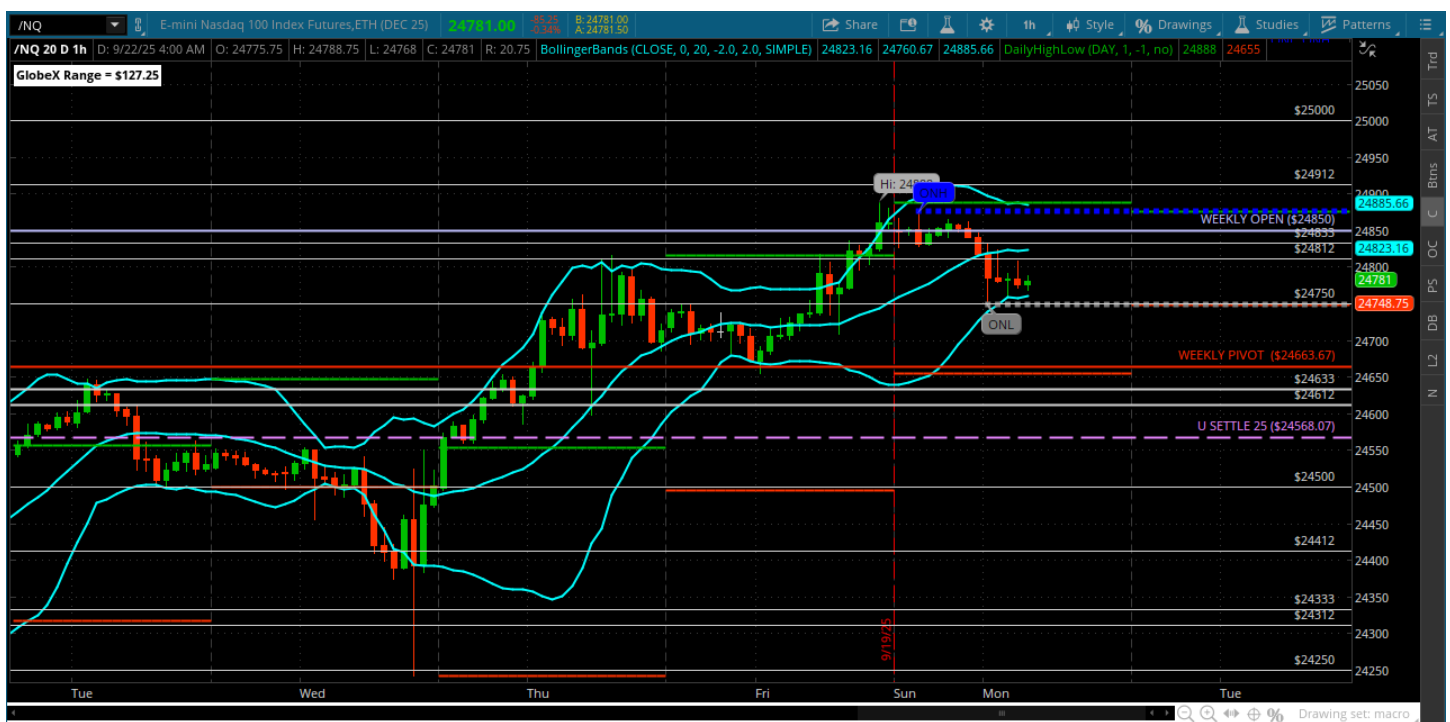
★ Low 6679.50

★ Close 6719.75

**ES (Week Open) 6716.00**

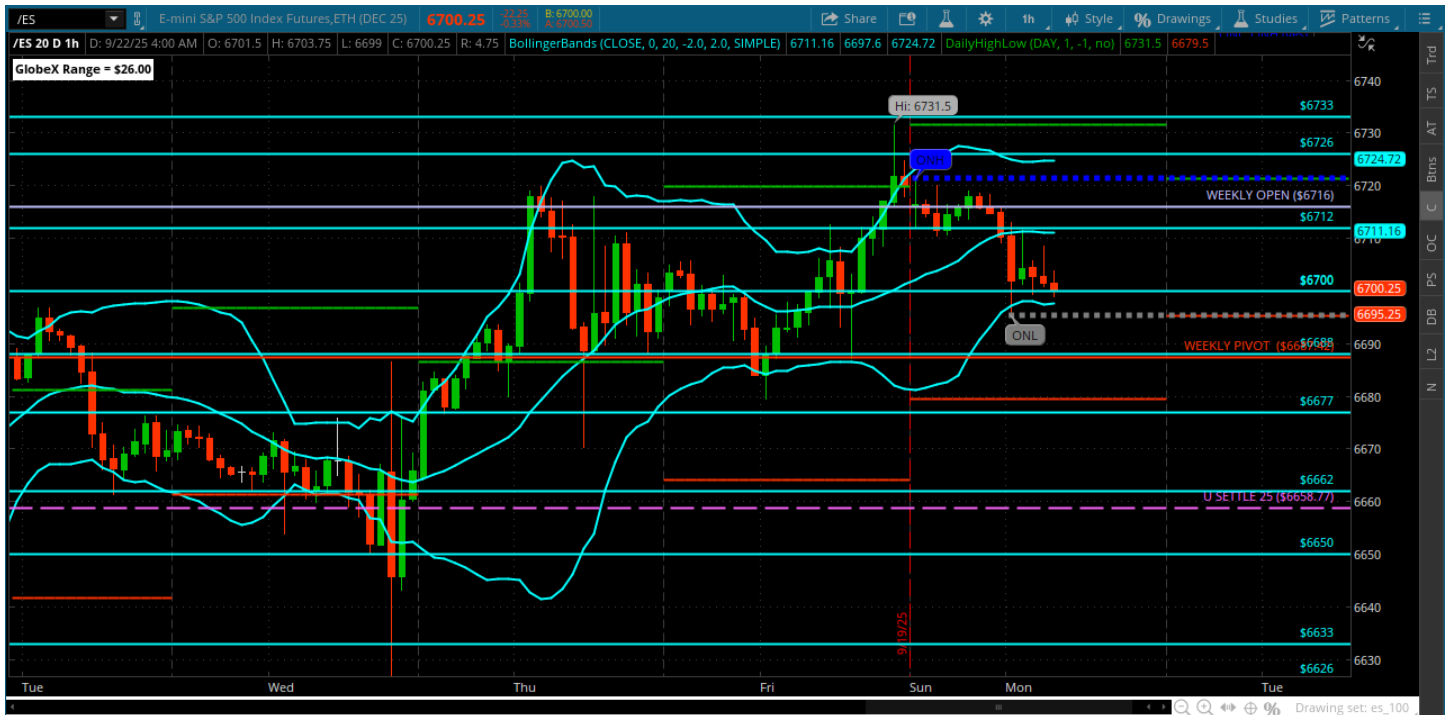
# Pre-Market Charts to Watch

## Monday, September 22, 2025 Pre-Market /NQ 1 Hour Chart



- More new highs on Friday
- Under weekly open and that will be the bull/bear today
- Above it can seek a new high
- If we remain under we can pullback – the move becomes a bigger move under weekly pivot and U SETTLE 24568

## Monday, September 22, 2025 Pre-Market /ES 1 Hour Chart



- New highs on Friday
- Same deal - under weekly open can seek the weekly pivot and under that a bigger move can materialize
- Back over weekly open sets up the 6733 and 6750
- Keep it simple today!
-

*Disclaimer:*

Disclaimer: Neither TheoTrade or any of its officers, directors, employees, other personnel, representatives, agents or independent contractors is, in such capacities, a licensed financial adviser, registered investment adviser, registered broker-dealer or FINRA|SIPC|NFA-member firm. TheoTrade does not provide investment or financial advice or make investment recommendations. TheoTrade is not in the business of transacting trades, nor does TheoTrade agree to direct your brokerage accounts or give trading advice tailored to your particular situation. Nothing contained in our content constitutes a solicitation, recommendation, promotion, or endorsement of any particular security, other investment product, transaction or investment. Trading Futures, Options on Futures, and retail off-exchange foreign currency transactions involves substantial risk of loss and is not suitable for all investors. You should carefully consider whether trading is suitable for you in light of your circumstances, knowledge, and financial resources. You may lose all or more of your initial investment. Opinions, market data, and recommendations are subject to change at any time. Past Performance is not necessarily indicative of future results.