



Tony Rago's Pre-Market Playbook

★ Overnight Range

- ES 17.00
- NQ 103.00

★ VIX 16.31

- ★ **Bulls** need to hold above yest closes **6716 and 24833** -- long above these
- ★ Breakouts are above yesterdays highs **6756 and 25026** - aggressive longs (await for confirmation with a new high and a retest of the highs from above that holds)
- ★ **Bears** need under overnight lows **short under 6711 and 24810**
- ★ Breakdown is below yest lows **6701 and 24780** -- aggressive shorts (wait for confirmation with a new low and a retest of the lows from below that hold)
- ★ **RANGEBOUND: 2 Way trade long and shorts will work** to get the day done
- ★ Keep it simple and be patient for confirmation on either side or establish the range if we are going to be rangebound
- ★ Confirm rally continuation with sustained trade over the 30min IB High and likewise
- ★ bearish under the IB Low

ECON:

- 10:00 am New home sales
- 4:10 pm San Francisco Fed President Mary Daly speech

Pre-Market Trading Levels for today

GLOBEX

NQ

★ **HIGH:** 24913.50

★ **LOW:** 24810.50

★ **Bull Case** defend the 24812 to seek the 24833, 24912, 25000, 25106, 25250, 25312, 25333, 25412, 25500

★ **Bear Case** seal the 25000 to seek the 24912, 24833, 24812, 24750, 24633, 24612, 24500, 24412, 24333, 24312, 24250

★ **Overnight Range - 103.00**

NQ (Prev. Day)

★ High 25026.00

★ Low 24780.50

★ Close 24833.75

NQ (Week Open) 24850.00

S&P 500

★ **HIGH** - 6728.75

★ **LOW** - 6711.75

★ **Bull Case:** defend the 6700 to seek the 6712, 6726, 6733, 6750, 6762, 6777, 6788, 6800, 6812, 6826, 6833, 6850

★ **Bear Case:** seal the 6750 to seek the 6733, 6726, 6712, 6700, 6788, 6677, 6662, 6650, 6633, 6626, 6612, 6600

★ **Overnight Range** - 16.50

ES (Prev Day)

★ High 6756.50

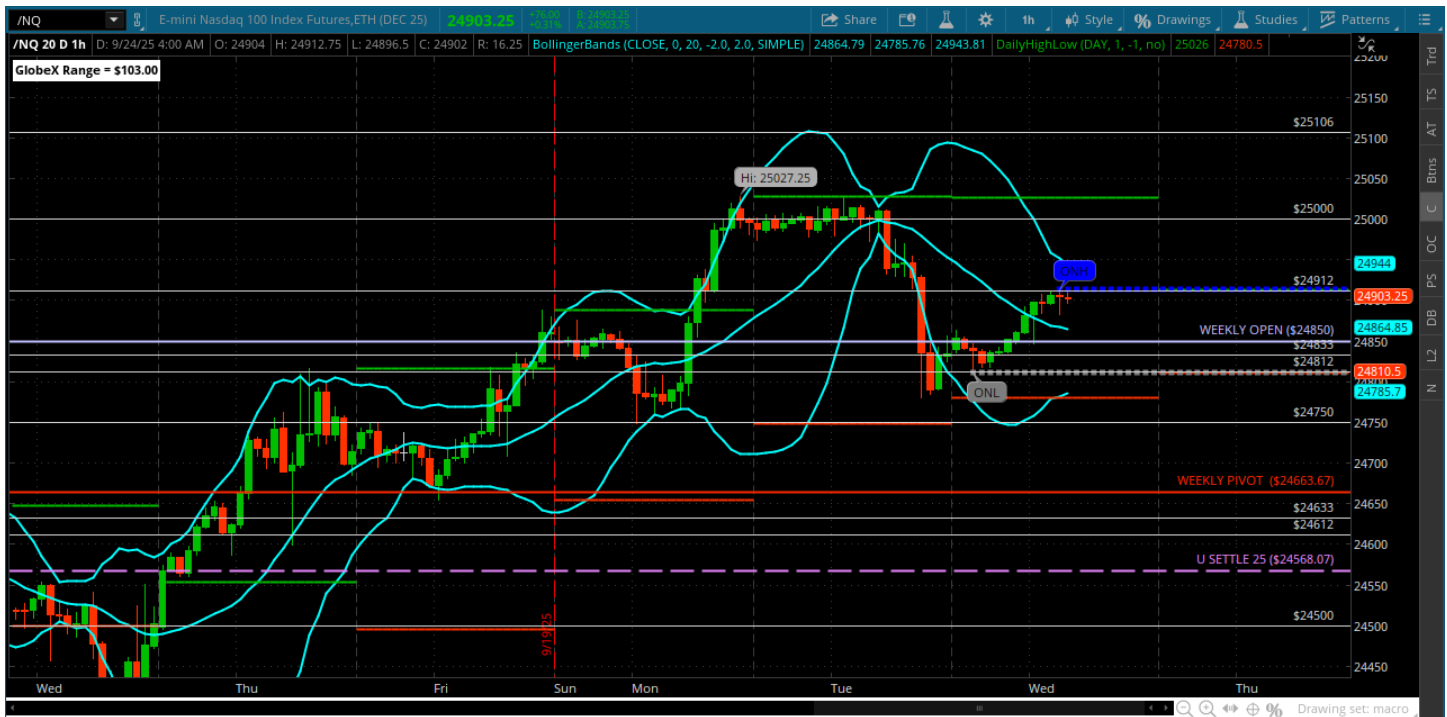
★ Low 6701.75

★ Close 6716.50

ES (Week Open) 6716.00

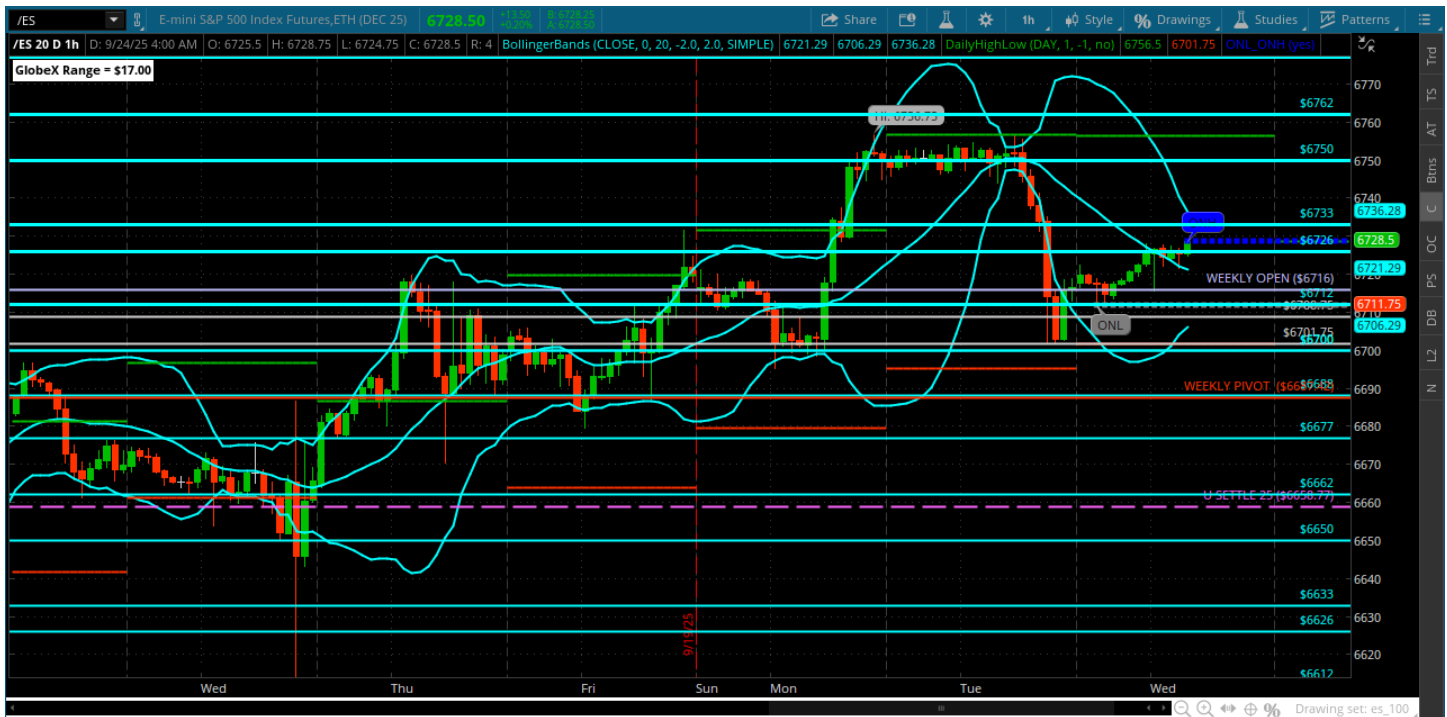
Pre-Market Charts to Watch

Wednesday, September 24, 2025 Pre-Market /NQ 1 Hour Chart



- Nice pullback off of the 25000 and back down to the weekly open
- That remains the level to hold for bulls or get under and stay under for bears
- 24750 is open for a test if we can get a close below the 24850
- Back above the 24912 can seek the 25000

Wednesday, September 24, 2025 Pre-Market /ES 1 Hour Chart



- All about the weekly open here 6716 if that can hold that we can reach back to the 6733. 6742 and 6750
- If the bears can defend the 6733 as resistance we can retest the weekly open and the roundy that was left hangin yesterday
- The weekly open is the bull/bear

Disclaimer:

Disclaimer: Neither TheoTrade or any of its officers, directors, employees, other personnel, representatives, agents or independent contractors is, in such capacities, a licensed financial adviser, registered investment adviser, registered broker-dealer or FINRA|SIPC|NFA-member firm. TheoTrade does not provide investment or financial advice or make investment recommendations. TheoTrade is not in the business of transacting trades, nor does TheoTrade agree to direct your brokerage accounts or give trading advice tailored to your particular situation. Nothing contained in our content constitutes a solicitation, recommendation, promotion, or endorsement of any particular security, other investment product, transaction or investment. Trading Futures, Options on Futures, and retail off-exchange foreign currency transactions involves substantial risk of loss and is not suitable for all investors. You should carefully consider whether trading is suitable for you in light of your circumstances, knowledge, and financial resources. You may lose all or more of your initial investment. Opinions, market data, and recommendations are subject to change at any time. Past Performance is not necessarily indicative of future results.