



Tony Rago's Pre-Market Playbook

★ Overnight Range

- ES 37.00
- NQ 178.25

★ VIX 16.40

★ **Bulls** need to hold above yest closes **6662 and 24635 -- long above these**

★ Breakouts are above yesterdays highs **6705 and 24793 - aggressive longs** (await for confirmation with a new high and a retest of the highs from above that holds

★ **Bears** need under overnight lows **short under 6653 and 24569**

★ Breakdown is below yest lows **6624 and 24422 -- aggressive shorts** (wait for

★ confirmation with a new low and a retest of the lows from below that hold)

★ **RANGEBOUND: 2 Way trade long and shorts will work** to get the day done

★ Keep it simple and be patient for confirmation on either side or establish the range if we are going to be rangebound

★ Confirm rally continuation with sustained trade over the 30min IB High and likewise

★ bearish under the IB Low

ECON:

- 8:30 am Core PCE (year-over-year)
- 9:00 am Richmond Fed President Tom Barkin speech
- 10:00 am Consumer sentiment (final)
- 1:00 pm Fed Vice Chair for Supervision Michelle Bowman speech

Pre-Market Trading Levels for today

GLOBEX

NQ

★ **HIGH:** 24747.50

★ **LOW:** 24569.25

★ **Bull Case** defend the 24412 to seek the 24500, 24612, 24633, 24750, 24812, 24833, 24912, 25000, 25106, 25250, 25312, 25333, 25412, 25500

★ **Bear Case** seal the 24812 to seek the 24750, 24633, 24612, 24500, 24412, 24333, 24312, 24250

★ **Overnight Range - 178.25**

NQ (Prev. Day)

★ High 24793.50

★ Low 24422.50

★ Close 24635.50

NQ (Week Open) 24850.00

S&P 500

★ **HIGH** - 6690.25

★ **LOW** - 6653.25

★ **Bull Case:** defend the 6626 to seek the 6633, 6650, 6662, 6677, 6688, 6700, 6712, 6726, 6733, 6750, 6762, 6777, 6788, 6800, 6812, 6826, 6833, 6850

★ **Bear Case:** seal the 6700 to seek the 6788, 6677, 6662, 6650, 6633, 6626, 6612, 6600, 6588, 6577

★ **Overnight Range** - 37.00

ES (Prev Day)

★ High 6705.25

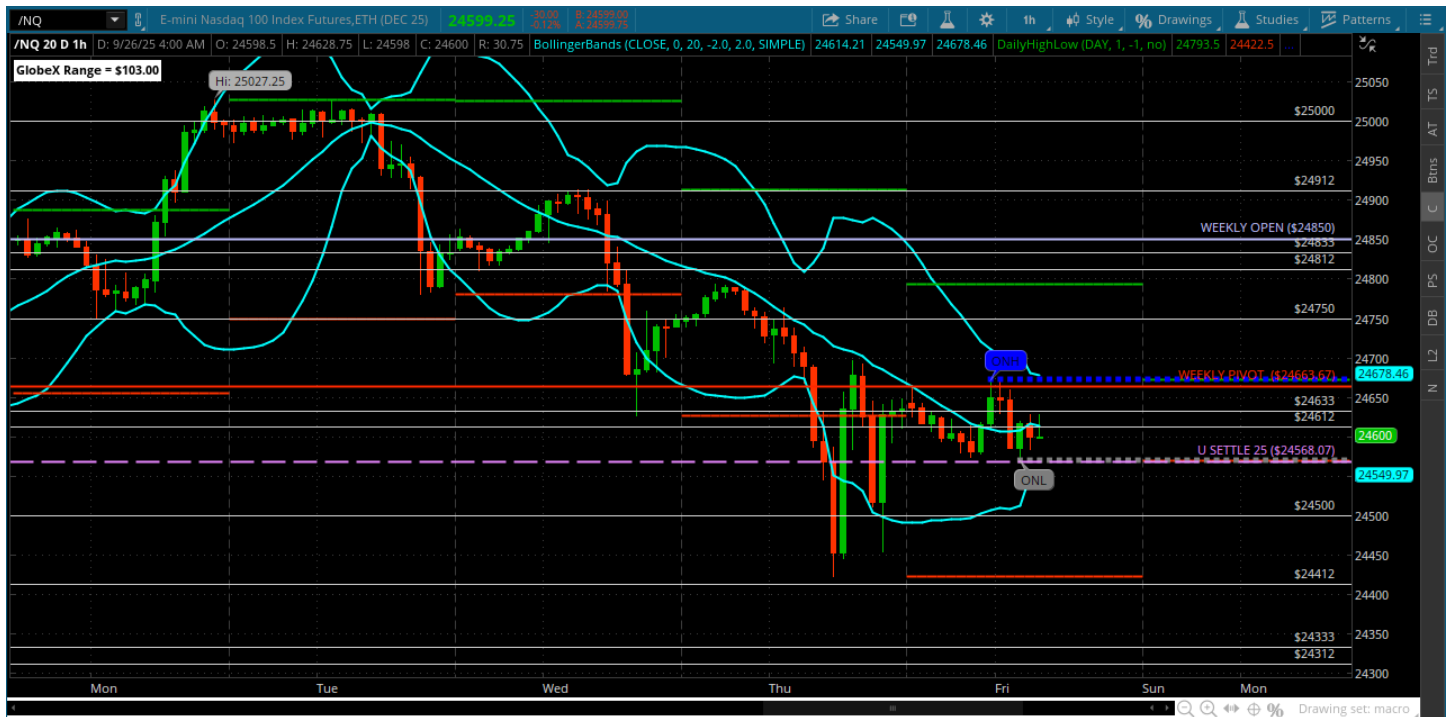
★ Low 6624.25

★ Close 6662.00

ES (Week Open) 6716.00

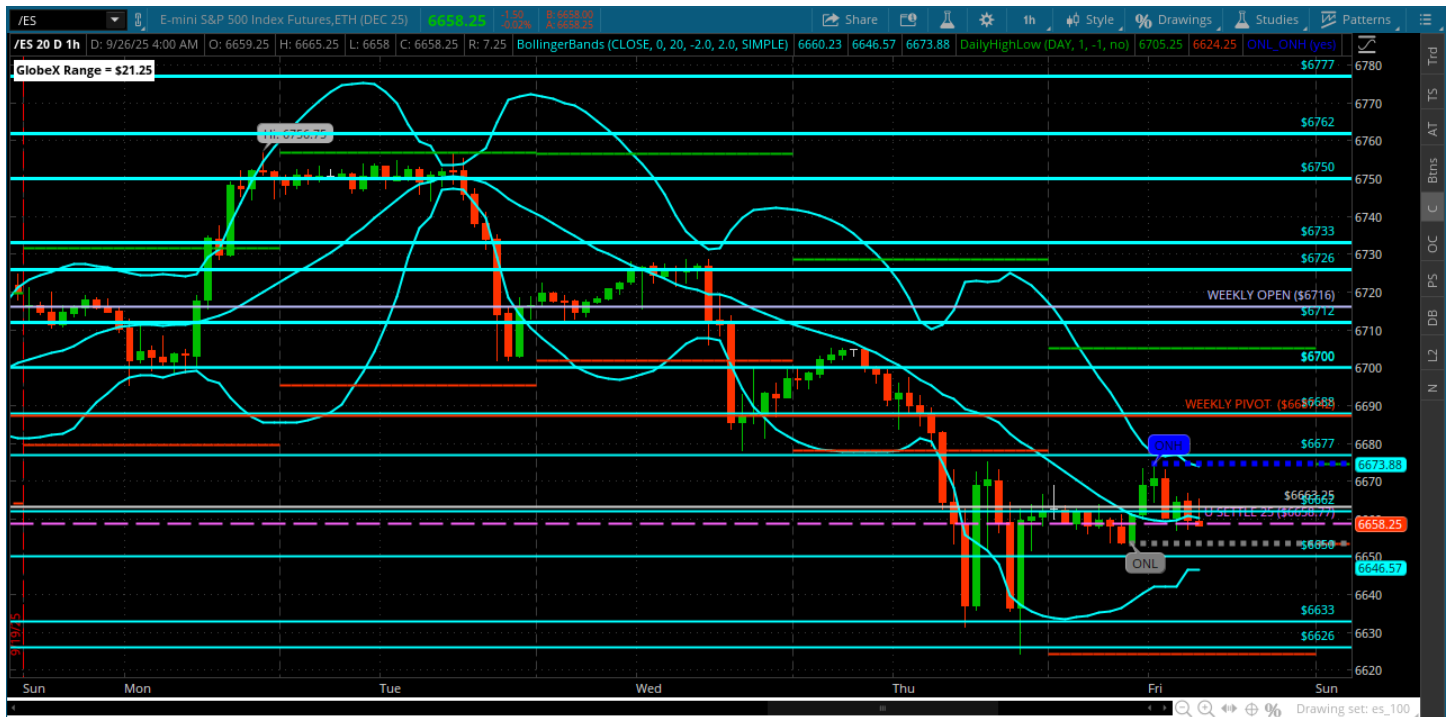
Pre-Market Charts to Watch

Friday, September 26, 2025 Pre-Market /NQ 1 Hour Chart



- Lots of volatility yesterday but turned out to be a big range day as we closed right back at weekly pivot
- Its Friday and the bears have the ball – can they finish the job and close it at the lows for a red week?
- Right now we are jammed between the U SETTLE and weekly pivot
- Under the settle we can target yesterdays lows - back above weekly pivot we can target 24750 and 24812

Friday, September 26, 2025 Pre-Market /ES 1 Hour Chart



- Very volatile range day with some big moves for ES
- Same as NQ its all about the U SETTLE level here and weekly pivot above
- Bulls need back above weekly pivot and 6700
- Bears need below the 6662 and go after yesterdays lows
- Nice low on the 6626 and rejected back to the 6650 and 62
-

Disclaimer:

Disclaimer: Neither TheoTrade or any of its officers, directors, employees, other personnel, representatives, agents or independent contractors is, in such capacities, a licensed financial adviser, registered investment adviser, registered broker-dealer or FINRA|SIPC|NFA-member firm. TheoTrade does not provide investment or financial advice or make investment recommendations. TheoTrade is not in the business of transacting trades, nor does TheoTrade agree to direct your brokerage accounts or give trading advice tailored to your particular situation. Nothing contained in our content constitutes a solicitation, recommendation, promotion, or endorsement of any particular security, other investment product, transaction or investment. Trading Futures, Options on Futures, and retail off-exchange foreign currency transactions involves substantial risk of loss and is not suitable for all investors. You should carefully consider whether trading is suitable for you in light of your circumstances, knowledge, and financial resources. You may lose all or more of your initial investment. Opinions, market data, and recommendations are subject to change at any time. Past Performance is not necessarily indicative of future results.