



Tony Rago's Pre-Market Playbook

- ★ ES WEEKLY PIVOT 6692.92
- ★ NQ WEEKLY PIVOT 24725.42
- ★ Overnight Range
 - ES 39.25
 - NQ 180.50
- ★ VIX 15.90
- ★ **Bulls** need to hold above yest closes **6697 and 24726 -- long above these**
- ★ Breakouts are above yesterdays highs **6703 and 24747 - aggressive longs** (await for confirmation with a new high and a retest of the highs from above that holds)
- ★ **Bears** need under overnight lows **short under 6696 and 24721**
- ★ Breakdown is below yest lows **6653 and 24520 -- aggressive shorts** (wait for confirmation with a new low and a retest of the lows from below that hold)
- ★ **RANGEBOUND: 2 Way trade long and shorts will work** to get the day done
- ★ Keep it simple and be patient for confirmation on either side or establish the range if we are going to be rangebound
- ★ Confirm rally continuation with sustained trade over the 30min IB High and likewise
- ★ bearish under the IB Low

ECON:

- 10:00 am Cleveland Fed President Beth Hammack speech
- 10:00 am Pending home sales

Pre-Market Trading Levels for today

GLOBEX

NQ

★ **HIGH:** 24902.25

★ **LOW:** 24721.75

★ **Bull Case** defend the 24633 to seek the 24750, 24812, 24833, 24912, 25000, 25106, 25250, 25312, 25333, 25412, 25500

★ **Bear Case** seal the 24912 to seek the 24750, 24633, 24612, 24500, 24412, 24333, 24312, 24250

★ **Overnight Range - 180.50**

NQ (Prev. Day)

★ High 24747.50

★ Low 24520.00

★ Close 24726.50

NQ (Week Open) 24726.50

S&P 500

★ **HIGH** - 6736.00

★ **LOW** - 6696.75

★ **Bull Case:** defend the 6626 to seek the 6633, 6650, 6662, 6677, 6688, 6700, 6712, 6726, 6733, 6750, 6762, 6777, 6788, 6800, 6812, 6826, 6833, 6850

★ **Bear Case:** seal the 6700 to seek the 6788, 6677, 6662, 6650, 6633, 6626, 6612, 6600, 6588, 6577

★ **Overnight Range** - 39.25

ES (Prev Day)

★ High 6703.75

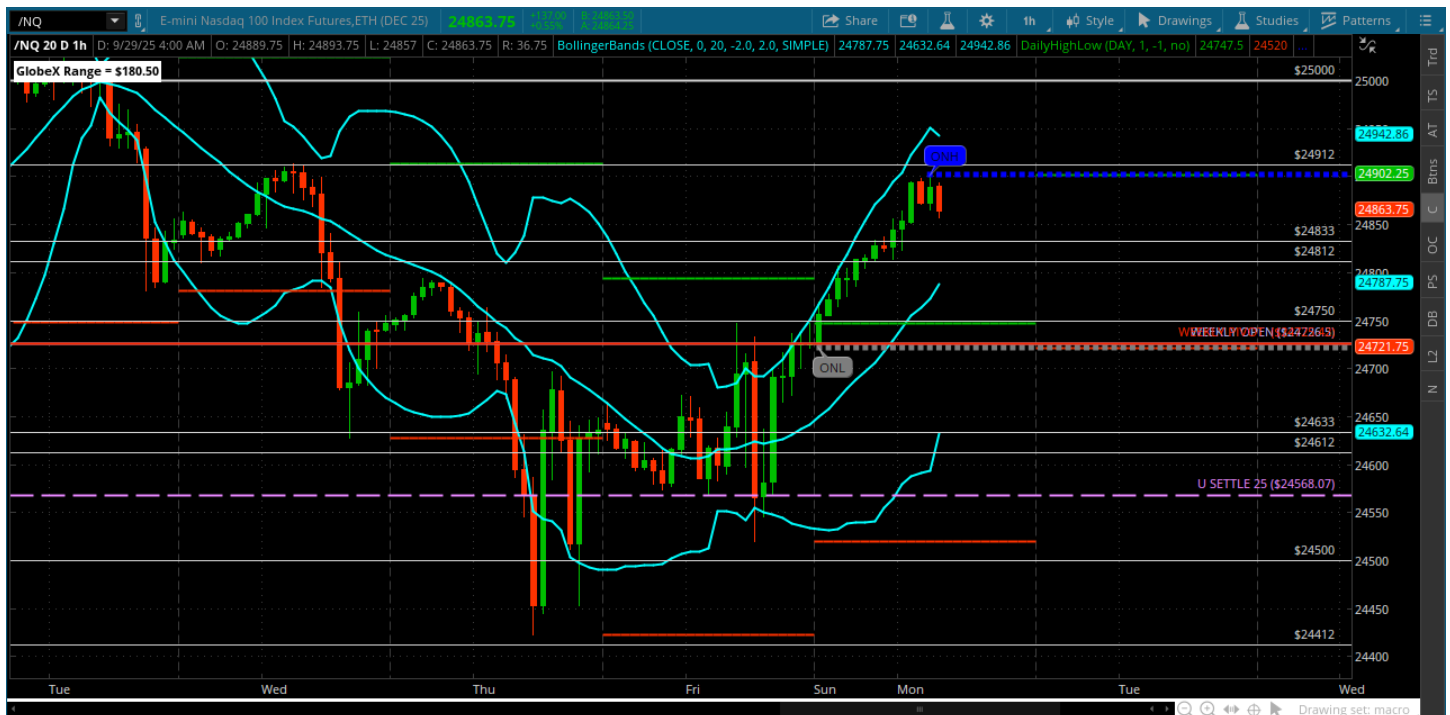
★ Low 6653.25

★ Close 6697.75

ES (Week Open) 6697.00

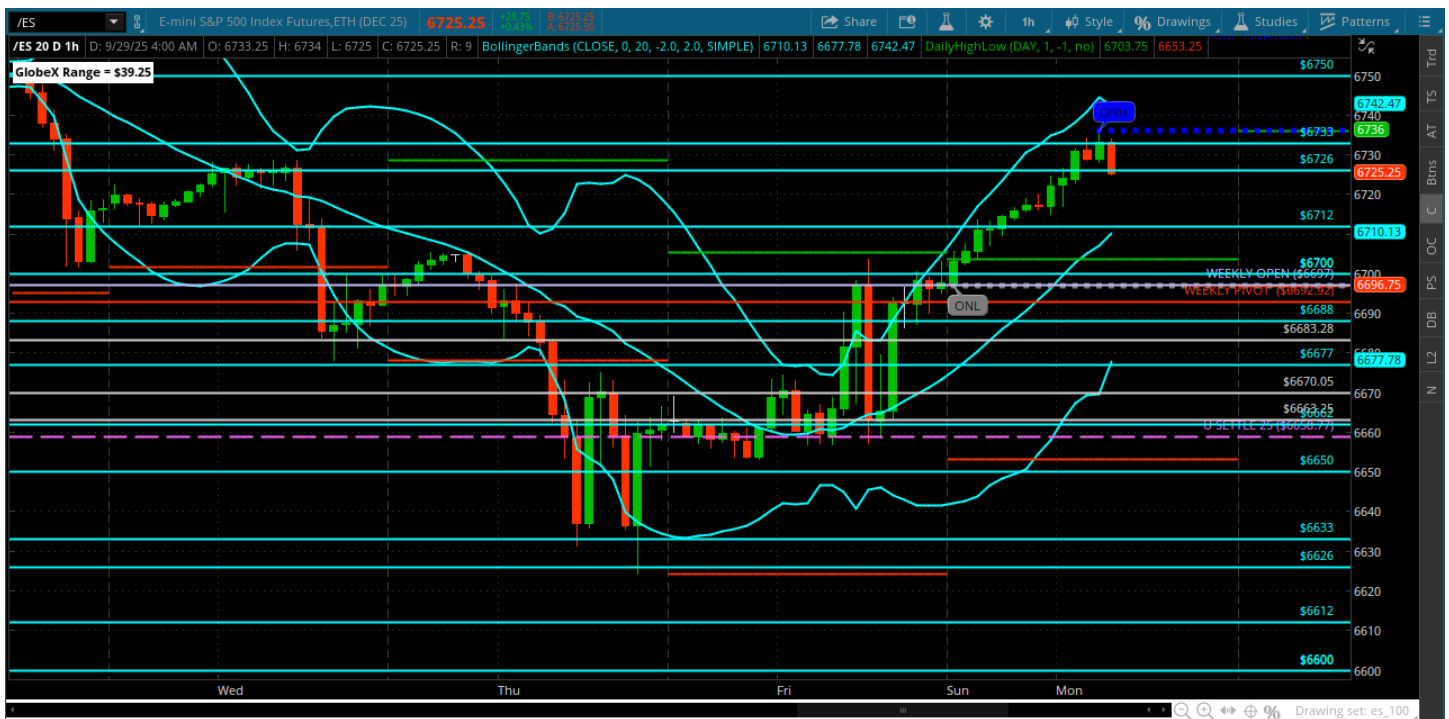
Pre-Market Charts to Watch

Monday, September 29, 2025 Pre-Market /NQ 1 Hour Chart



- Bulls have the ball above the weekly pivot and weekly open - both on the 24726
- Lets see if we can get a test from above in the cash session
- Bears need to reject the 750/812 area and move back under the weekly open
- The recent pullback wasn't even 3% so bears need to reclaim the tape and move back to the 24500

Monday, September 29, 2025 Pre-Market /ES 1 Hour Chart



- Bulls holding court overnight back to the 6736
- They need to hold a pullback to the weekly open and keep it as support
- Bears need to reject a test of the 6750 or run the risk of new highs
- Keep it simple today and start the week off right

Disclaimer:

Disclaimer: Neither TheoTrade or any of its officers, directors, employees, other personnel, representatives, agents or independent contractors is, in such capacities, a licensed financial adviser, registered investment adviser, registered broker-dealer or FINRA|SIPC|NFA-member firm. TheoTrade does not provide investment or financial advice or make investment recommendations. TheoTrade is not in the business of transacting trades, nor does TheoTrade agree to direct your brokerage accounts or give trading advice tailored to your particular situation. Nothing contained in our content constitutes a solicitation, recommendation, promotion, or endorsement of any particular security, other investment product, transaction or investment. Trading Futures, Options on Futures, and retail off-exchange foreign currency transactions involves substantial risk of loss and is not suitable for all investors. You should carefully consider whether trading is suitable for you in light of your circumstances, knowledge, and financial resources. You may lose all or more of your initial investment. Opinions, market data, and recommendations are subject to change at any time. Past Performance is not necessarily indicative of future results.