



Tony Rago's Pre-Market Playbook

★ Overnight Range

- ES 22.75
- NQ 102.00

★ VIX 16.55

- ★ **Bulls** need to hold above yest closes **6708 and 24811** -- long above these
- ★ Breakouts are above yesterdays highs **6736 and 24975** - aggressive longs (await for confirmation with a new high and a retest of the highs from above that holds
- ★ **Bears** need under overnight lows **short under 6694 and 24754**
- ★ Breakdown is below yest lows **6696 and 24721** -- aggressive shorts (wait for
- ★ confirmation with a new low and a retest of the lows from below that hold)
- ★ **RANGEBOUND: 2 Way trade long and shorts will work** to get the day done
- ★ Keep it simple and be patient for confirmation on either side or establish the range if we are going to be rangebound
- ★ Confirm rally continuation with sustained trade over the 30min IB High and likewise
- ★ bearish under the IB Low

ECON:

- 9:45 am Chicago Business Barometer
- 10:00 am Job openings Aug.
- 10:00 am Consumer confidence
- 1:30 pm Chicago Fed President Austan Goolsbee speech
- 3:30 pm Chicago Fed President Austan Goolsbee TV appearance

Pre-Market Trading Levels for today

GLOBEX

NQ

★ **HIGH:** 24856.75

★ **LOW:** 24754.75

★ **Bull Case** defend the 24633 to seek the 24750, 24812, 24833, 24912, 25000, 25106, 25250, 25312, 25333, 25412, 25500

★ **Bear Case** seal the 24912 to seek the 24750, 24633, 24612, 24500, 24412, 24333, 24312, 24250

★ **Overnight Range - 102.00**

NQ (Prev. Day)

★ High 24975.50

★ Low 24721.75

★ Close 24811.25

NQ (Week Open) 24726.50

S&P 500

★ **HIGH** - 6717.00

★ **LOW** - 6694.25

★ **Bull Case:** defend the 6677 to seek the 6688, 6700, 6712, 6726, 6733, 6750, 6762, 6777, 6788, 6800, 6812, 6826, 6833, 6850

★ **Bear Case:** seal the 6726 to seek the 6712, 6700, 6688, 6677, 6662, 6650, 6633, 6626, 6612, 6600, 6588, 6577

★ **Overnight Range** - 22.75

ES (Prev Day)

★ High 6736.00

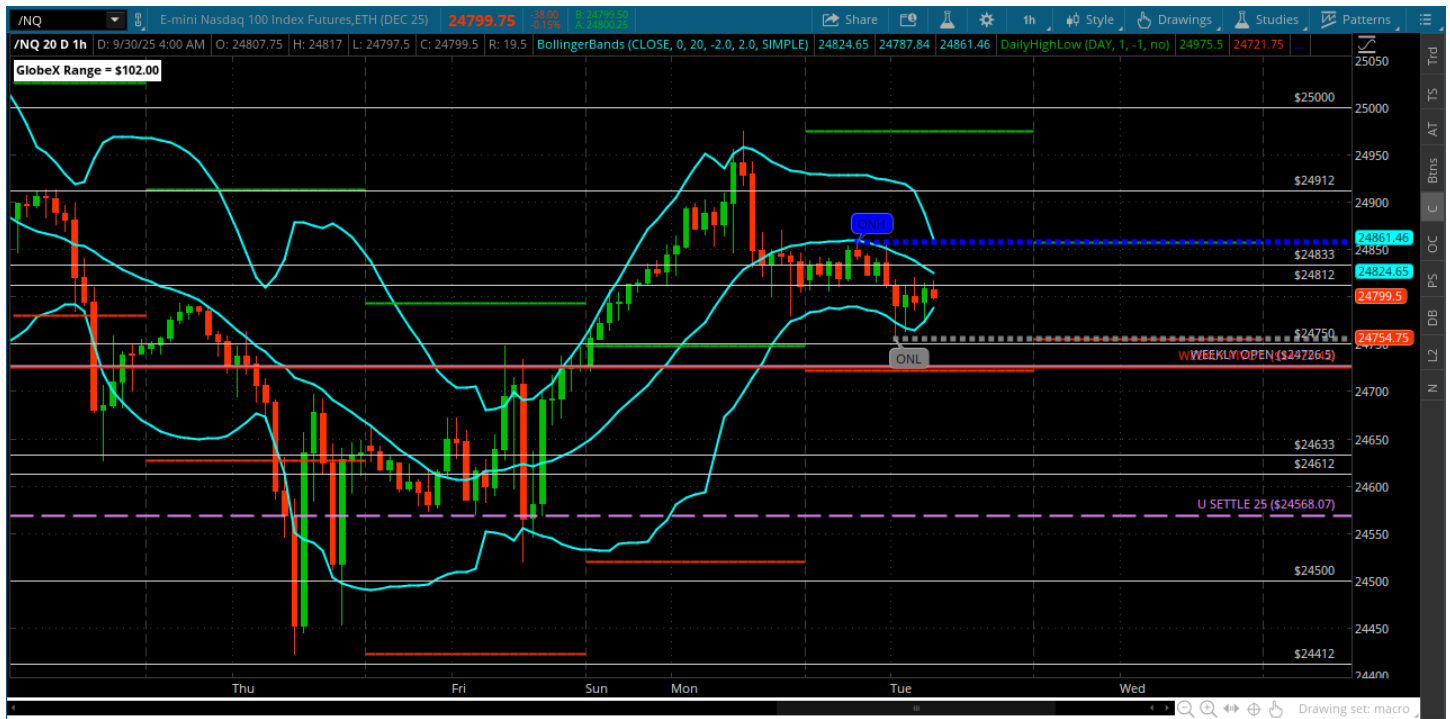
★ Low 6696.25

★ Close 6708.50

ES (Week Open) 6697.00

Pre-Market Charts to Watch

Tuesday, September 30, 2025 Pre-Market /NQ 1 Hour Chart



- Kind of a nothing day price needs to test the 24750 and the weekly open and weekly pivot for clues here
- All of that is stacked up at the 24726 so lets see if we can get a test of that at the open
- Under 24726 can move back to the 24633 and the U SETTLE
- End of month and qtr today so be patient

Disclaimer:

Disclaimer: Neither TheoTrade or any of its officers, directors, employees, other personnel, representatives, agents or independent contractors is, in such capacities, a licensed financial adviser, registered investment adviser, registered broker-dealer or FINRA|SIPC|NFA-member firm. TheoTrade does not provide investment or financial advice or make investment recommendations. TheoTrade is not in the business of transacting trades, nor does TheoTrade agree to direct your brokerage accounts or give trading advice tailored to your particular situation. Nothing contained in our content constitutes a solicitation, recommendation, promotion, or endorsement of any particular security, other investment product, transaction or investment. Trading Futures, Options on Futures, and retail off-exchange foreign currency transactions involves substantial risk of loss and is not suitable for all investors. You should carefully consider whether trading is suitable for you in light of your circumstances, knowledge, and financial resources. You may lose all or more of your initial investment. Opinions, market data, and recommendations are subject to change at any time. Past Performance is not necessarily indicative of future results.