



## *Tony Rago's Pre-Market Playbook*

---

### ★ Overnight Range

- ES 28.75
- NQ 123.50

### ★ VIX 16.37

- ★ **Bulls** need to hold above yest closes **6765 and 25105** -- long above these
- ★ Breakouts are above yesterdays highs **6782 and 25180** - aggressive longs (await for confirmation with a new high and a retest of the highs from above that holds)
- ★ **Bears** need under overnight lows **short under 6758 and 25073**
- ★ Breakdown is below yest lows **6741 and 24993** -- aggressive shorts (wait for confirmation with a new low and a retest of the lows from below that hold)
- ★ **RANGEBOUND: 2 Way trade long and shorts will work** to get the day done
- ★ Keep it simple and be patient for confirmation on either side or establish the range if we are going to be rangebound
- ★ Confirm rally continuation with sustained trade over the 30min IB High and likewise
- ★ bearish under the IB Low

### ECON:

- 9:30 am Federal Reserve governor Stephen Miran TV appearance
- 9:45 am S&P final U.S. services PMI
- 10:00 am ISM services
- 1:30 pm Dallas Fed President Lorie Logan speech
- 1:40 pm Federal Reserve Vice Chair Philip Jefferson speech
- 3:30 pm Federal Reserve governor Stephen Miran TV appearance

## *Pre-Market Trading Levels for today*

---

### **GLOBEX**

#### **NQ**

★ **HIGH:** 25196.50

★ **LOW:** 25073.00

★ **Bull Case** defend the 24912 to seek the 25000, 25106, 25250, 25312, 25333, 25412, 25500, 25612, 25633, 25750, 25812, 25833

★ **Bear Case** seal the 24250 to seek the 25106, 25000, 24912, 24833, 24812, 24750, 24633, 24612, 24500, 24412, 24333, 24312, 24250

★ **Overnight Range - 123.50**

#### **NQ (Prev. Day)**

★ High 25180.00

★ Low 24993.75

★ Close 25105.00

**NQ (Week Open) 24726.50**

## S&P 500

★ **HIGH** - 6787.50

★ **LOW** - 6758.75

★ **Bull Case:** defend the 6733 to seek the 6750, 6762, 6777, 6788, 6800, 6812, 6826, 6833, 6850, 6862, 6877

★ **Bear Case:** seal the 6788 to seek the 6777, 6762, 6750, 6733, 6726, 6712, 6700, 6688, 6677, 6662, 6650, 6633, 6626, 6612, 6600, 6588, 6577

★ **Overnight Range** - 28.75

### ES (Prev Day)

★ High 6782.25

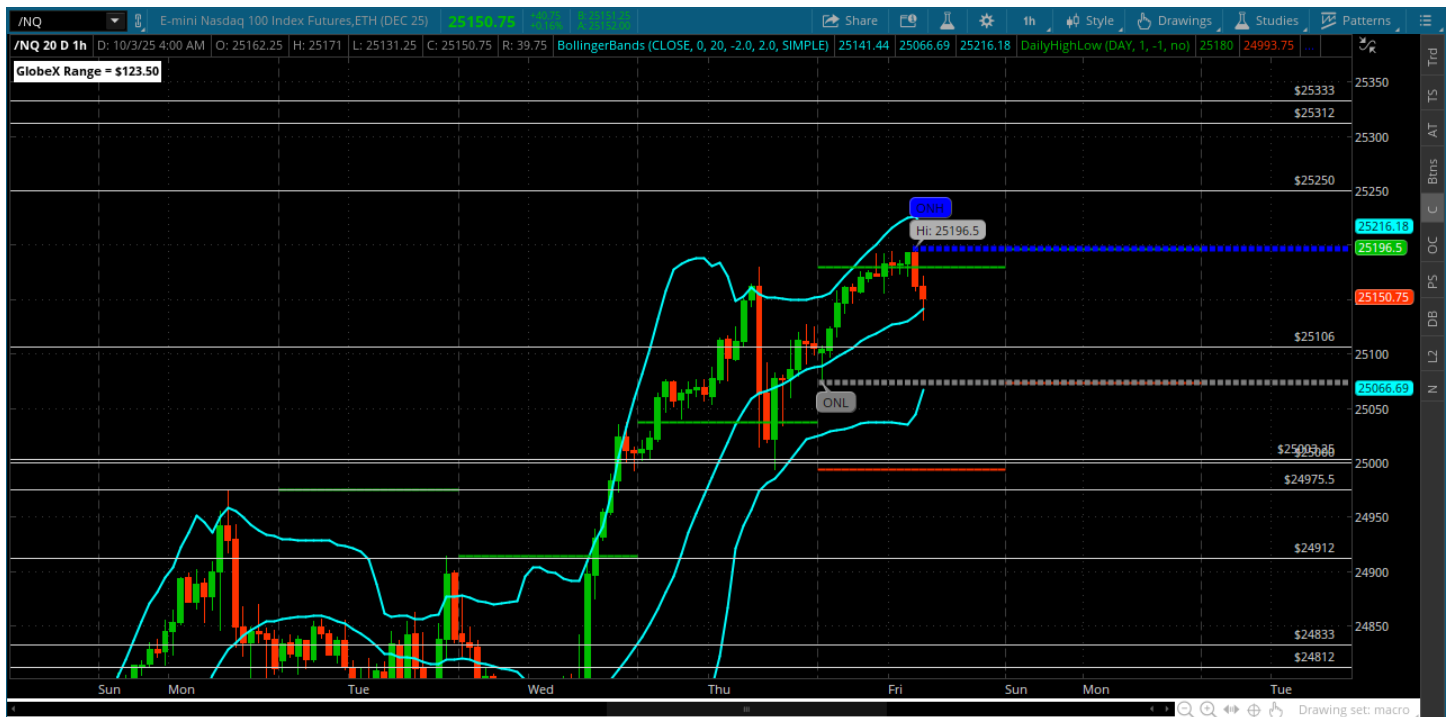
★ Low 6741.50

★ Close 6765.00

ES (Week Open) 6697.00

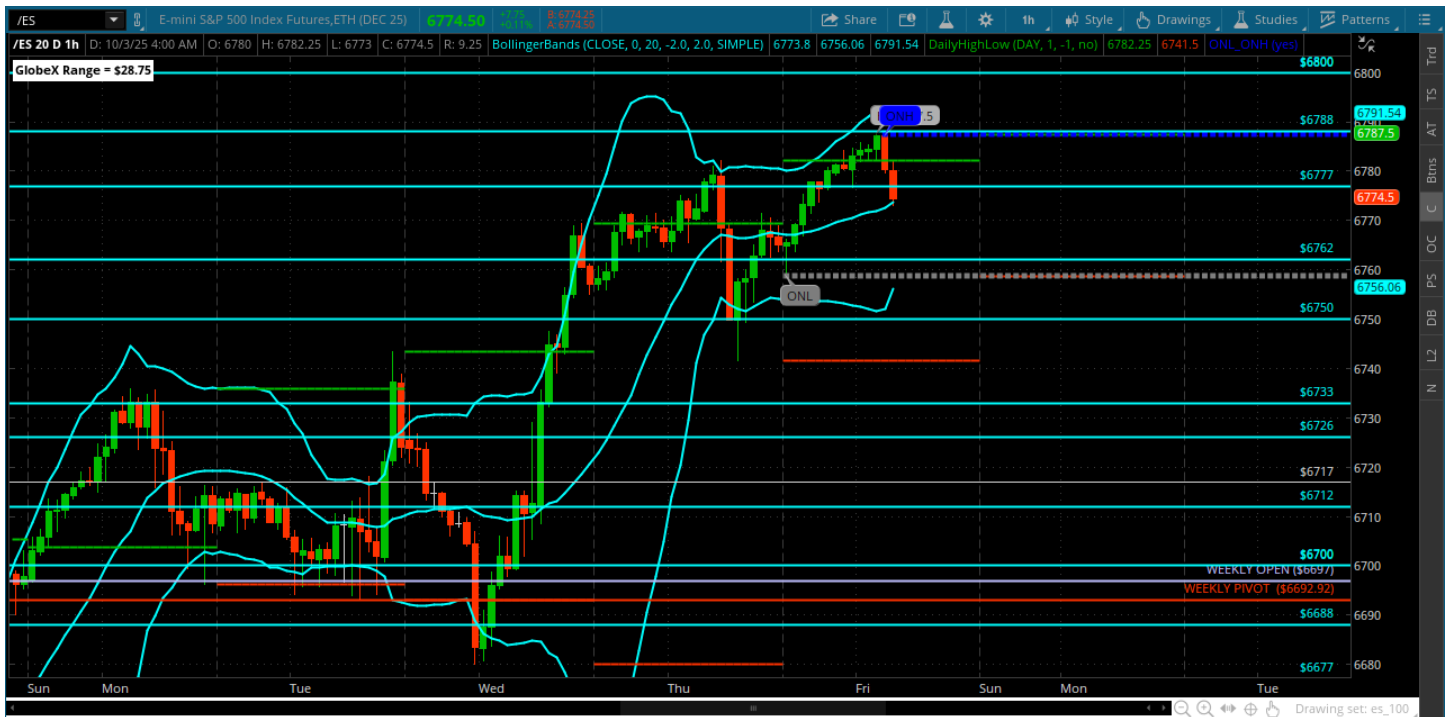
## Pre-Market Charts to Watch

### Friday, October 3, 2025 Pre-Market /NQ 1 Hour Chart



- 25250 is till open for a test if bulls can defend the 25106
- We did slip down to the 25000 yesterday and it was defended
- Bulls just need to keep holding the line on these pullbacks to get to the target
- Its Friday lets see if they wanna close the week out strong

## Friday, October 3, 2025 Pre-Market /ES 1 Hour Chart



- New highs – knocking on the door of the 6800
- The 6750 and 6762 need to hold for that
- Saw a decent move down that got bought and slowly made it to this high
- Bulls just need to keep defending key levels
- Bears need a headline -- maybe they get it with govt shutdown and no NFP

*Disclaimer:*

Disclaimer: Neither TheoTrade or any of its officers, directors, employees, other personnel, representatives, agents or independent contractors is, in such capacities, a licensed financial adviser, registered investment adviser, registered broker-dealer or FINRA|SIPC|NFA-member firm. TheoTrade does not provide investment or financial advice or make investment recommendations. TheoTrade is not in the business of transacting trades, nor does TheoTrade agree to direct your brokerage accounts or give trading advice tailored to your particular situation. Nothing contained in our content constitutes a solicitation, recommendation, promotion, or endorsement of any particular security, other investment product, transaction or investment. Trading Futures, Options on Futures, and retail off-exchange foreign currency transactions involves substantial risk of loss and is not suitable for all investors. You should carefully consider whether trading is suitable for you in light of your circumstances, knowledge, and financial resources. You may lose all or more of your initial investment. Opinions, market data, and recommendations are subject to change at any time. Past Performance is not necessarily indicative of future results.