



Tony Rago's Pre-Market Playbook

★ Overnight Range

- ES 60.75
- NQ 247.25

★ **Bulls** need to hold above yest closes **6777 and 25278-- long above these**

★ Breakouts are above yesterdays highs **6785 and 25296 - aggressive longs** (await for confirmation with a new high and a retest of the highs from above that holds)

★ **Bears** need under overnight lows **short under 6776 and 25276**

★ Breakdown is below yest lows **6717 and 24937 -- aggressive shorts** (wait for

★ confirmation with a new low and a retest of the lows from below that hold)

★ **RANGEBOUND: 2 Way trade long and shorts will work** to get the day done

★

★ Keep it simple and be patient for confirmation on either side or establish the range if we are going to be rangebound

★ Confirm rally continuation with sustained trade over the 30min IB High and likewise

★ bearish under the IB Low

ECON:

- 9:45 am S&P flash U.S. services PMI
- 9:45 am S&P flash U.S. manufacturing PMI
- 10:00 am Consumer sentiment (final)

Pre-Market Trading Levels for today

GLOBEX

NQ

★ **HIGH:** 25523.25

★ **LOW:** 25276.00

★ **Bull Case** defend the 25000 to seek the 25106, 25250, 25312, 25333, 25412, 25500, 25612, 25633, 25750

★ **Bear Case** seal the 25250 to seek the 25106, 25000, 24912, 24833, 24812, 24750, 24633, 24612, 24500, 24412, 24333, 24312, 24250, 24106, 24000

★ **Overnight Range - 247.25**

NQ (Prev. Day)

★ High 25296.00

★ Low 24937.00

★ Close 25278.00

NQ (Week Open) 25065.75

S&P 500

★ **HIGH** - 6837.25

★ **LOW** - 6776.50

★ **Bull Case:** defend the 6788 to seek the 6788, 6800, 6812, 6826, 6833, 6850, 6862, 6877, 6888, 6900

★ **Bear Case:** seal the 6817 to seek the 6812, 6800, 6888, 6877, 6762, 6750, 6733, 6726, 6712, 6700, 6688, 6677, 6662, 6650, 6633

★ **Overnight Range** - 60.75

ES (Prev Day)

★ High 6785.75

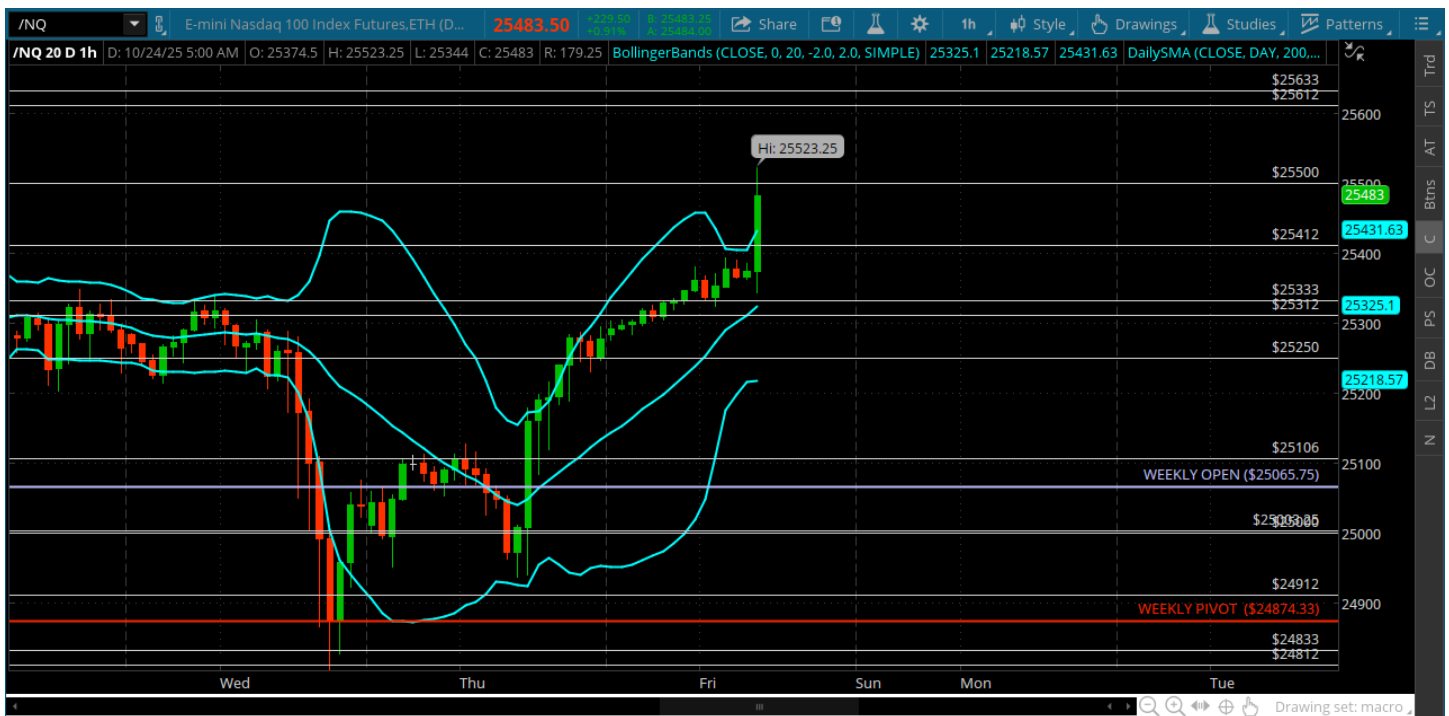
★ Low 6717.50

★ Close 6777.75

ES (Week Open) 6721.00

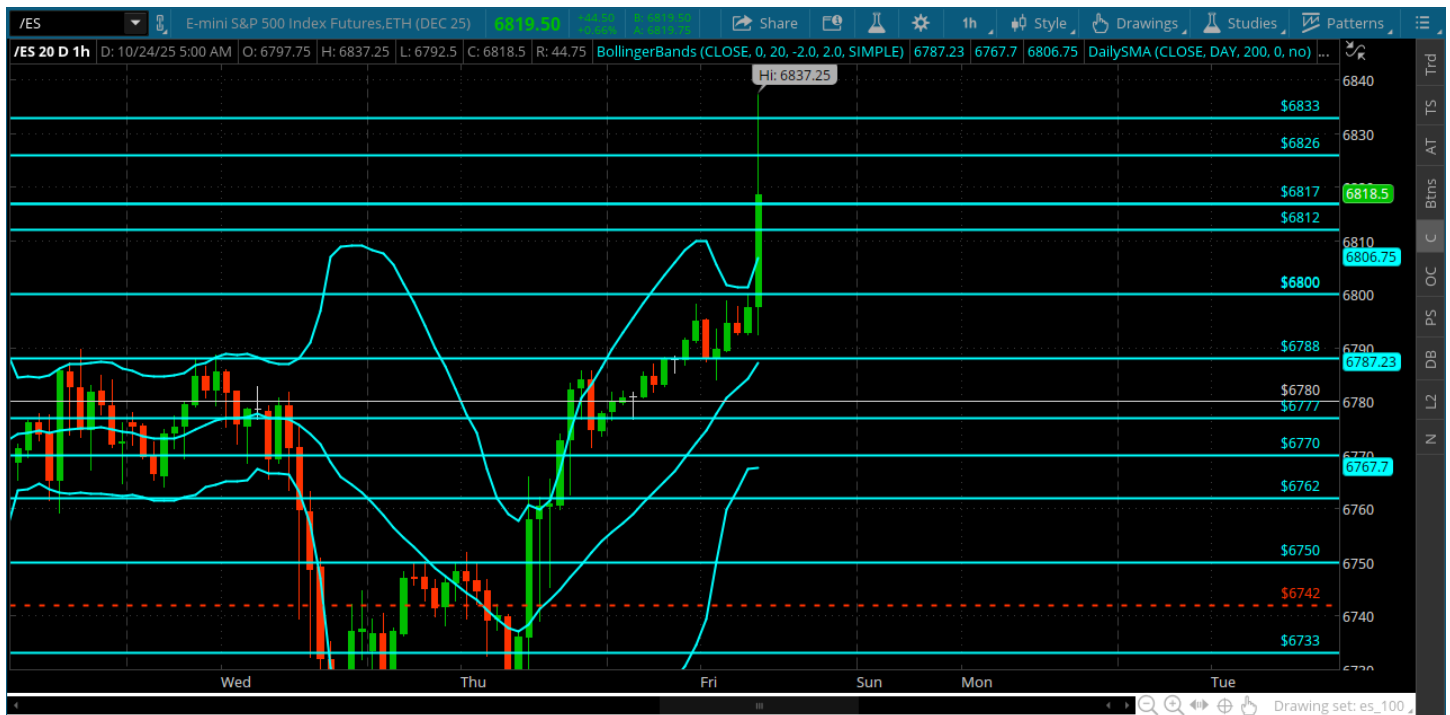
Pre-Market Charts to Watch

Friday, October 24, 2025 Pre-Market /NQ 1 Hour Chart



- Bulls held the line and now posting up new highs to the 25500
- Lets see how the close the week out
- A pullback sets up under the 25250

Friday, October 24, 2025 Pre-Market /ES 1 Hour Chart



- New highs to the 6837
- Up to bulls to hold the 6800
- Under the 6812 sets up a pullback

Disclaimer:

Disclaimer: Neither TheoTrade or any of its officers, directors, employees, other personnel, representatives, agents or independent contractors is, in such capacities, a licensed financial adviser, registered investment adviser, registered broker-dealer or FINRA|SIPC|NFA-member firm. TheoTrade does not provide investment or financial advice or make investment recommendations. TheoTrade is not in the business of transacting trades, nor does TheoTrade agree to direct your brokerage accounts or give trading advice tailored to your particular situation. Nothing contained in our content constitutes a solicitation, recommendation, promotion, or endorsement of any particular security, other investment product, transaction or investment. Trading Futures, Options on Futures, and retail off-exchange foreign currency transactions involves substantial risk of loss and is not suitable for all investors. You should carefully consider whether trading is suitable for you in light of your circumstances, knowledge, and financial resources. You may lose all or more of your initial investment. Opinions, market data, and recommendations are subject to change at any time. Past Performance is not necessarily indicative of future results.