



Tony Rago's Pre-Market Playbook

★ Overnight Range

- ES 18.00
- NQ 85.25

★ VIX 17.06

- ★ **Bulls** need to hold above yest closes **6765** and **25054**-- long above these
- ★ Breakouts are above yesterdays highs **6802** and **25275** - **aggressive longs** (await for confirmation with a new high and a retest of the highs from above that holds)
- ★ **Bears** need under overnight lows **short under 6758** and **25026**
- ★ Breakdown is below yest lows **6747** and **24984** -- **aggressive shorts** (wait for confirmation with a new low and a retest of the lows from below that hold)
- ★ **RANGEBOUND: 2 Way trade long and shorts will work** to get the day done
- ★ Keep it simple and be patient for confirmation on either side or establish the range if we are going to be rangebound
- ★ Confirm rally continuation with sustained trade over the 30min IB High and likewise
- ★ bearish under the IB Low

ECON:

- 2:00 pm Minutes of Fed's September FOMC meeting

Pre-Market Trading Levels for today

GLOBEX

NQ

★ **HIGH:** 25111.50

★ **LOW:** 25026.25

★ **Bull Case** defend the 24912 to seek the 25000, 25106, 25250, 25312, 25333, 25412, 25500, 25612, 25633, 25750, 25812, 25833

★ **Bear Case** seal the 24250 to seek the 25106, 25000, 24912, 24833, 24812, 24750, 24633, 24612, 24500, 24412, 24333, 24312, 24250

★ **Overnight Range - 85.25**

NQ (Prev. Day)

★ High 25275.00

★ Low 24984.75

★ Close 25054.75

NQ (Week Open) 25000.00

S&P 500

★ **HIGH** - 6774.25

★ **LOW** - 6758.25

★ **Bull Case:** defend the 6750 to seek the 6762, 6777, 6788, 6800, 6812, 6826, 6833, 6850, 6862, 6877

★ **Bear Case:** seal the 6812 to seek the 6800, 6788, 6777, 6762, 6750, 6733, 6726, 6712, 6700, 6688, 6677, 6662, 6650, 6633, 6626, 6612, 6600, 6588, 6577

★ **Overnight Range** - 16.25

ES (Prev Day)

★ High 6802.75

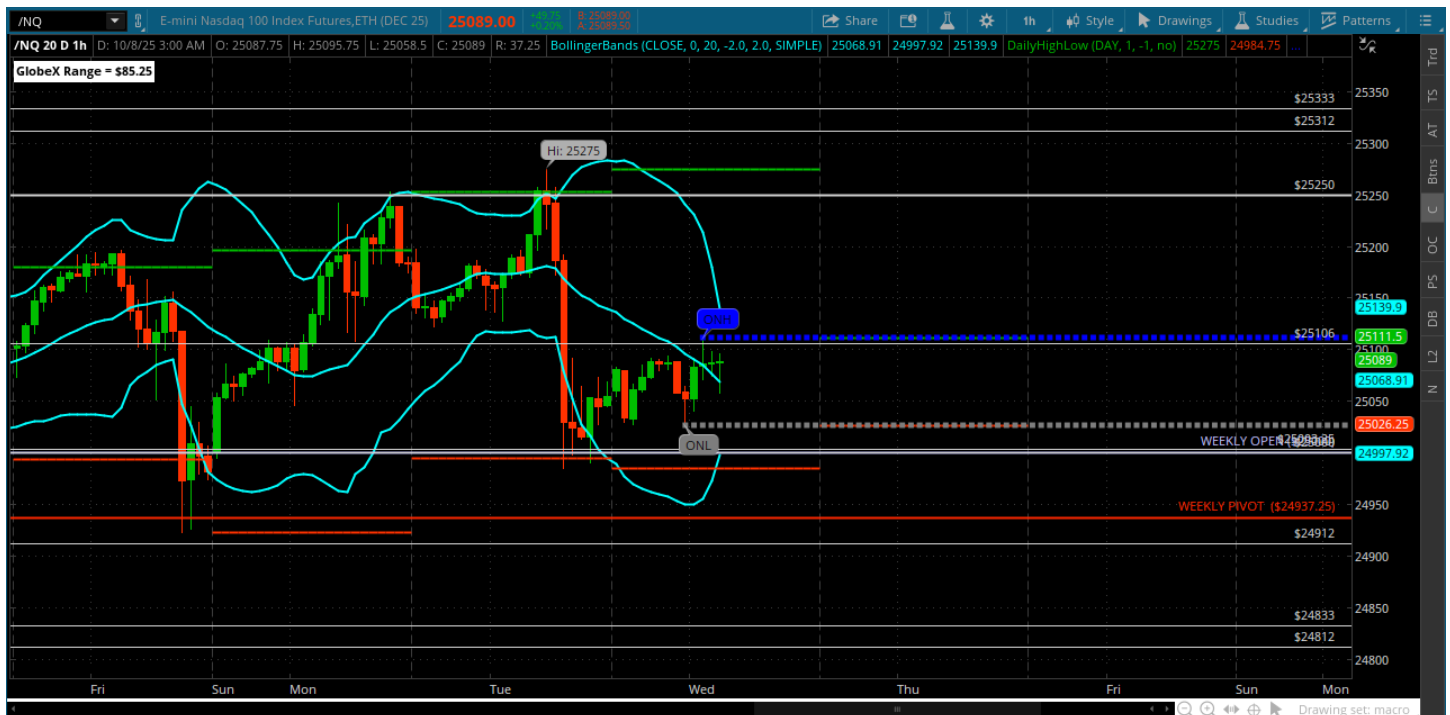
★ Low 6747.25

★ Close 6765.00

ES (Week Open) 6768.00

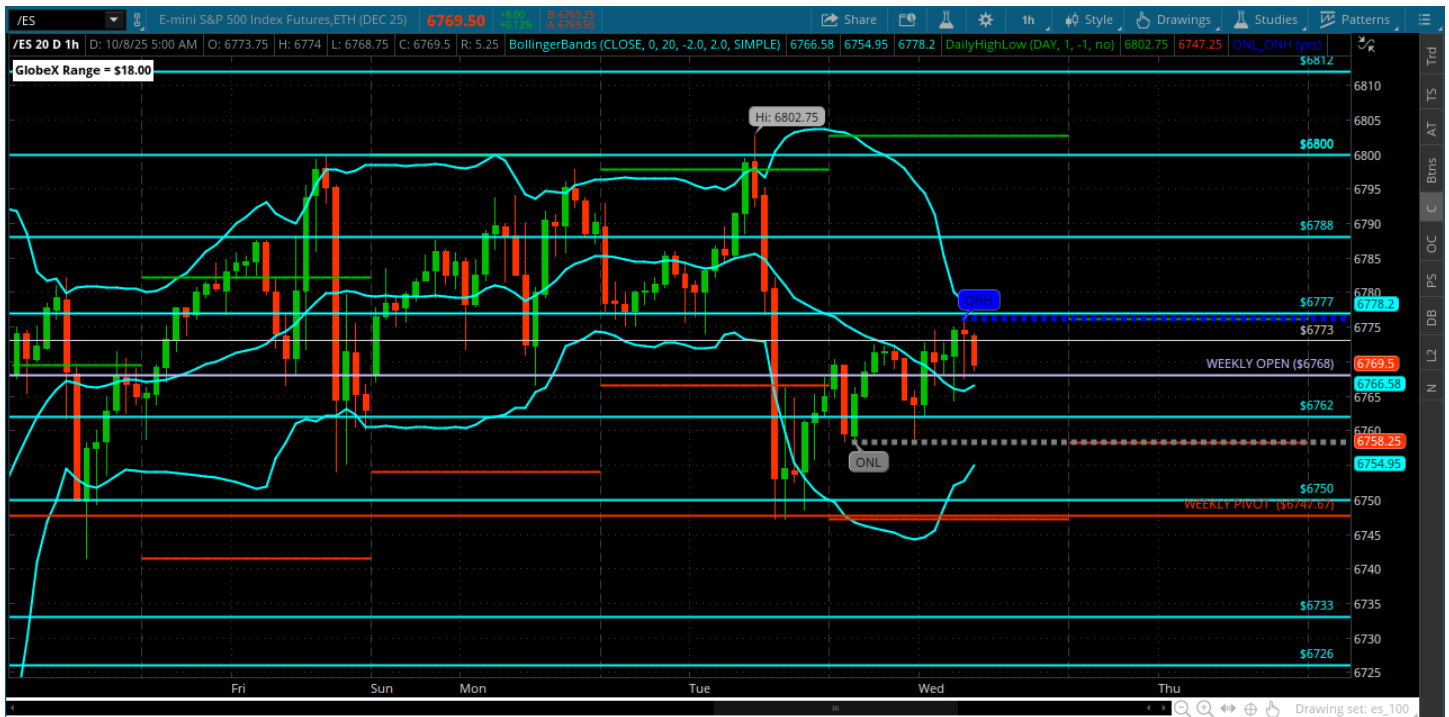
Pre-Market Charts to Watch

Wednesday, October 8, 2025 Pre-Market /NQ 1 Hour Chart



- Rejection from a new high and now hanging under the 25106
- For a deeper pullback price need to close below 25000 on the daily
- This is a good start to a rotation lower but price must be sustained under 25000
- If it continues to be defended we will range inside of the 25000-25250
- The next leg down will setup under the 24912

Wednesday, October 8, 2025 Pre-Market /ES 1 Hour Chart



- Price tested the 6750 and weekly pivot and bounced right off of it back to the 6777 area
- This is halfway back on the selloff – above 77 could retrace back to the 88 then 00
- Bears need to defend the 77 and move back to overnight lows and yesterdays lows
- We could range and consolidate here between 6760-6780 - absent a break back above the 6784 area and converting the 88 we could see new weekly lows

Disclaimer:

Disclaimer: Neither TheoTrade or any of its officers, directors, employees, other personnel, representatives, agents or independent contractors is, in such capacities, a licensed financial adviser, registered investment adviser, registered broker-dealer or FINRA|SIPC|NFA-member firm. TheoTrade does not provide investment or financial advice or make investment recommendations. TheoTrade is not in the business of transacting trades, nor does TheoTrade agree to direct your brokerage accounts or give trading advice tailored to your particular situation. Nothing contained in our content constitutes a solicitation, recommendation, promotion, or endorsement of any particular security, other investment product, transaction or investment. Trading Futures, Options on Futures, and retail off-exchange foreign currency transactions involves substantial risk of loss and is not suitable for all investors. You should carefully consider whether trading is suitable for you in light of your circumstances, knowledge, and financial resources. You may lose all or more of your initial investment. Opinions, market data, and recommendations are subject to change at any time. Past Performance is not necessarily indicative of future results.