



Tony Rago's Pre-Market Playbook

★ Overnight Range

- ES 53.25
- NQ 243.50

★ VIX 16.73

- ★ **Bulls** need to hold above yest closes **6724 and 24838** -- long above these
- ★ Breakouts are above yesterdays highs **6743 and 24913** - aggressive longs (await for confirmation with a new high and a retest of the highs from above that holds)
- ★ **Bears** need under overnight lows **short under 6680 and 24633**
- ★ Breakdown is below yest lows **6693 and 24722** -- aggressive shorts (wait for confirmation with a new low and a retest of the lows from below that hold)
- ★ **RANGEBOUND: 2 Way trade long and shorts will work** to get the day done
- ★ Keep it simple and be patient for confirmation on either side or establish the range if we are going to be rangebound
- ★ Confirm rally continuation with sustained trade over the 30min IB High and likewise
- ★ bearish under the IB Low

ECON:

- 8:15 am ADP employment Sept.
- 9:45 am S&P final U.S. manufacturing PMI
- 10:00 am Construction spending
- 10:00 am ISM manufacturing

Pre-Market Trading Levels for today

GLOBEX

NQ

★ **HIGH:** 24876.75

★ **LOW:** 24633.25

★ **Bull Case** defend the 24633 to seek the 24750, 24812, 24833, 24912, 25000, 25106, 25250, 25312, 25333, 25412, 25500

★ **Bear Case** seal the 24912 to seek the 24750, 24633, 24612, 24500, 24412, 24333, 24312, 24250

★ **Overnight Range - 243.50**

NQ (Prev. Day)

★ High 24913.75

★ Low 24722.25

★ Close 24838.25

NQ (Week Open) 24726.50

S&P 500

★ **HIGH** - 6733.25

★ **LOW** - 6680.00

★ **Bull Case:** defend the 6677 to seek the 6688, 6700, 6712, 6726, 6733, 6750, 6762, 6777, 6788, 6800, 6812, 6826, 6833, 6850

★ **Bear Case:** seal the 6726 to seek the 6712, 6700, 6688, 6677, 6662, 6650, 6633, 6626, 6612, 6600, 6588, 6577

★ **Overnight Range** - 53.25

ES (Prev Day)

★ High 6743.50

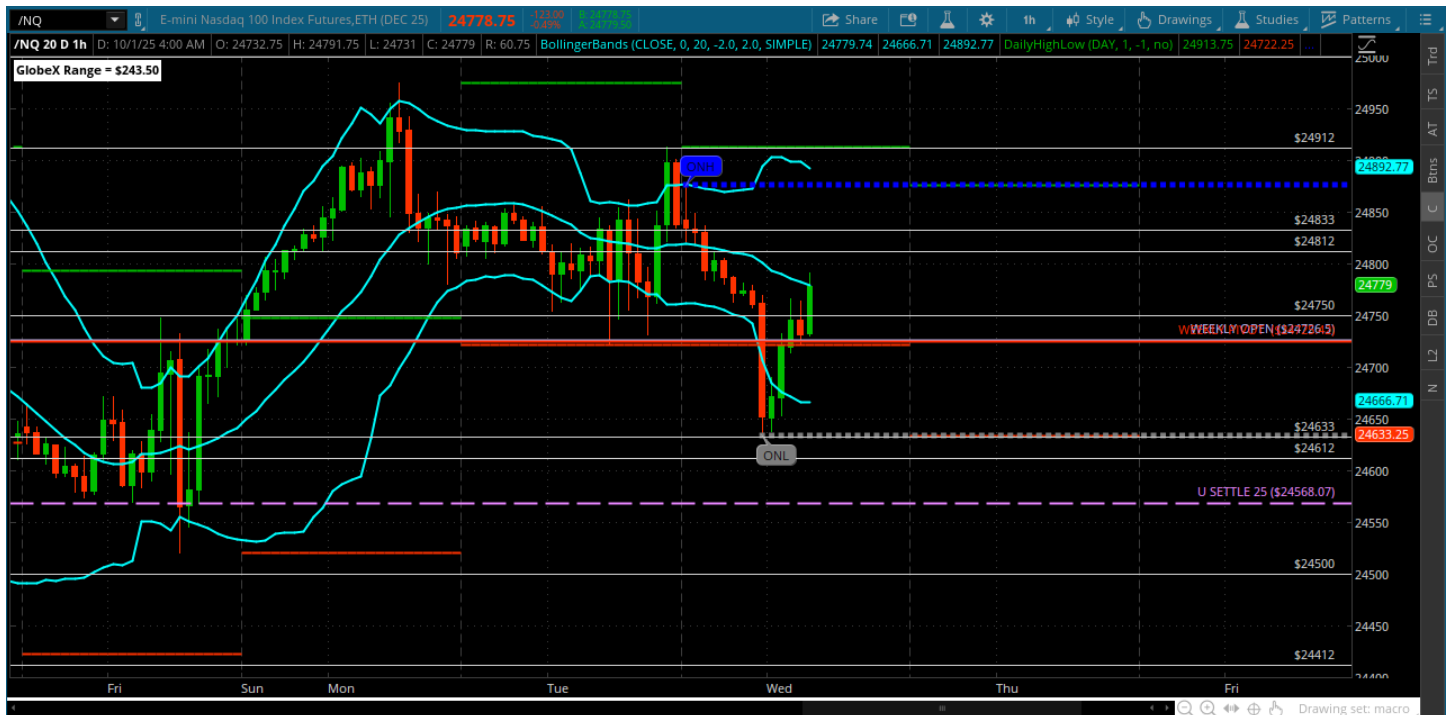
★ Low 6693.00

★ Close 6724.00

ES (Week Open) 6697.00

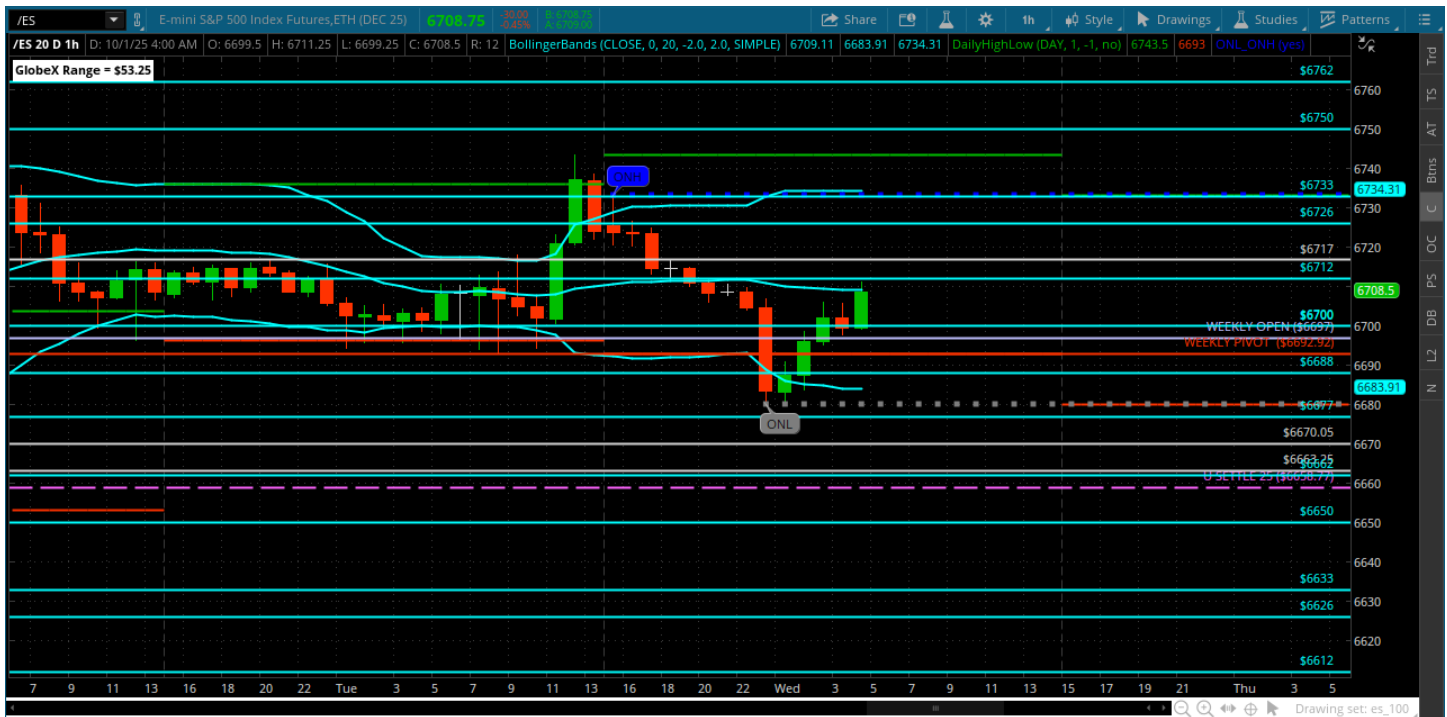
Pre-Market Charts to Watch

Wednesday, October 1, 2025 Pre-Market /NQ 1 Hour Chart



- Big push at the end of the day to the 24912 to close out the qtr and then rejection all the way back to the 24633
- Back above weekly pivot and weekly open coming into the open -- lets see if bulls are going to hold this or if we are going to start October with a push back down
- Big overnight range so could be a volatile day today
-

Wednesday, October 1, 2025 Pre-Market /ES 1 Hour Chart



- Run up to the 6743 to close out the qtr and then a big push back down to the 6680 from the 6733
- Still all about weekly pivot and the weekly open here which are both around the 6700
- New month so lets see how we want to open and play this -- big overnight range

Disclaimer:

Disclaimer: Neither TheoTrade or any of its officers, directors, employees, other personnel, representatives, agents or independent contractors is, in such capacities, a licensed financial adviser, registered investment adviser, registered broker-dealer or FINRA|SIPC|NFA-member firm. TheoTrade does not provide investment or financial advice or make investment recommendations. TheoTrade is not in the business of transacting trades, nor does TheoTrade agree to direct your brokerage accounts or give trading advice tailored to your particular situation. Nothing contained in our content constitutes a solicitation, recommendation, promotion, or endorsement of any particular security, other investment product, transaction or investment. Trading Futures, Options on Futures, and retail off-exchange foreign currency transactions involves substantial risk of loss and is not suitable for all investors. You should carefully consider whether trading is suitable for you in light of your circumstances, knowledge, and financial resources. You may lose all or more of your initial investment. Opinions, market data, and recommendations are subject to change at any time. Past Performance is not necessarily indicative of future results.