



## *Tony Rago's Pre-Market Playbook*

### ★ Overnight Range

- ES 25.00
- NQ 162.50

### ★ VIX 16.03

- ★ **Bulls** need to hold above yest closes **6757 and 25009** -- long above these
- ★ Breakouts are above yesterdays highs **6769 and 25036** - aggressive longs (await for confirmation with a new high and a retest of the highs from above that holds
- ★ **Bears** need under overnight lows **short under 6756 and 25000**
- ★ Breakdown is below yest lows **6680 and 24633** -- aggressive shorts (wait for
- ★ confirmation with a new low and a retest of the lows from below that hold)
- ★ **RANGEBOUND: 2 Way trade long and shorts will work** to get the day done
- ★ Keep it simple and be patient for confirmation on either side or establish the range if we are going to be rangebound
- ★ Confirm rally continuation with sustained trade over the 30min IB High and likewise
- ★ bearish under the IB Low

### ECON:

- 9:00 am Boston Fed President Susan Collins speech
- 9:00 am S&P Case-Shiller home price index
- 9:45 am Chicago Business Barometer (PMI)
- 10:00 am Job openings
- 10:00 am Consumer confidence
- 1:30 pm Chicago Fed President Austan Goolsbee speech
- 3:30 pm Chicago Fed President Austan Goolsbee TV appearance

## *Pre-Market Trading Levels for today*

---

### **GLOBEX**

#### **NQ**

★ **HIGH:** 25164.25

★ **LOW:** 25001.75

★ **Bull Case** defend the 24912 to seek the 25000, 25106, 25250, 25312, 25333, 25412, 25500, 25612, 25633, 25750, 25812, 25833

★ **Bear Case** seal the 24250 to seek the 25106, 25000, 24912, 24833, 24812, 24750, 24633, 24612, 24500, 24412, 24333, 24312, 24250

★ **Overnight Range - 133.75**

#### **NQ (Prev. Day)**

★ High 25036.75

★ Low 24633.25

★ Close 25009.25

**NQ (Week Open) 24726.50**

## S&P 500

★ **HIGH** - 6781.00

★ **LOW** - 6756.00

★ **Bull Case:** defend the 6733 to seek the 6750, 6762, 6777, 6788, 6800, 6812, 6826, 6833, 6850, 6862, 6877

★ **Bear Case:** seal the 6788 to seek the 6777, 6762, 6750, 6733, 6726, 6712, 6700, 6688, 6677, 6662, 6650, 6633, 6626, 6612, 6600, 6588, 6577

★ **Overnight Range** - 20.25

### ES (Prev Day)

★ High 6769.50

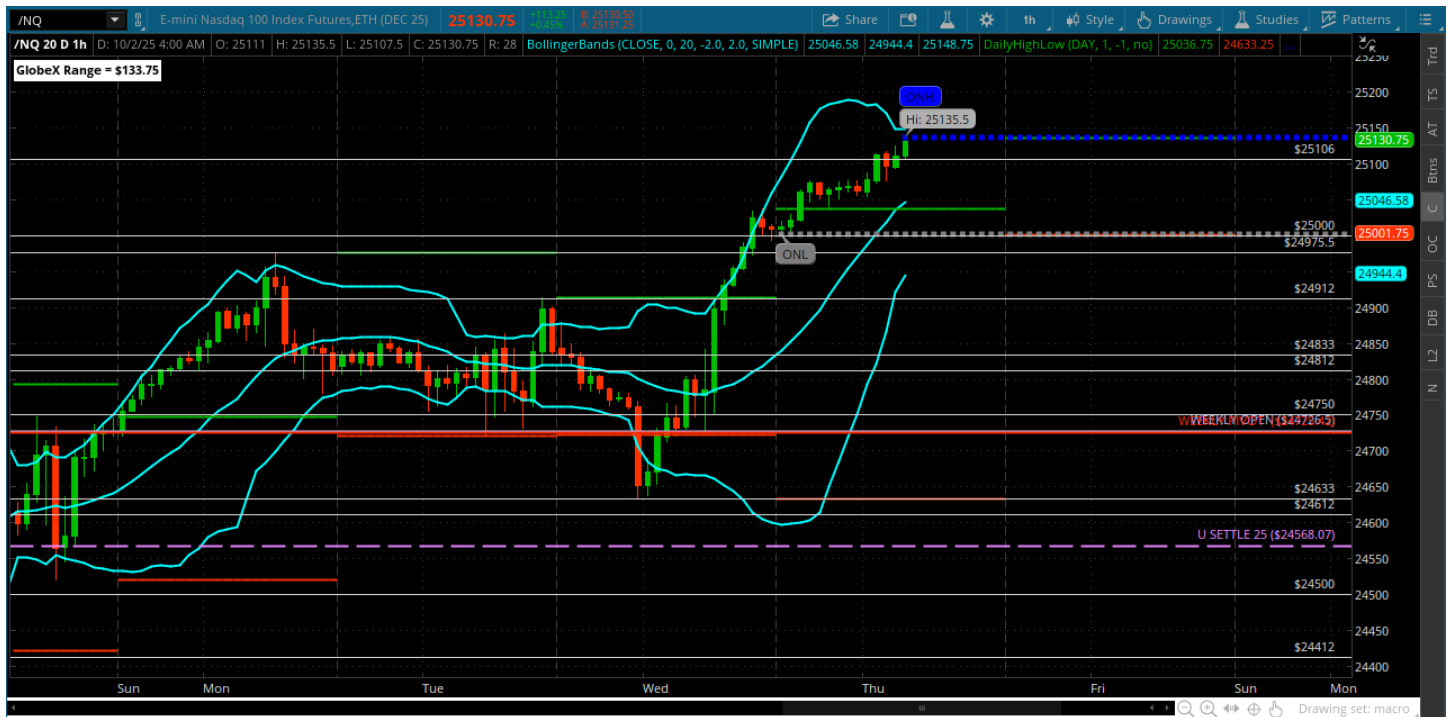
★ Low 6680.00

★ Close 6757.00

**ES (Week Open) 6697.00**

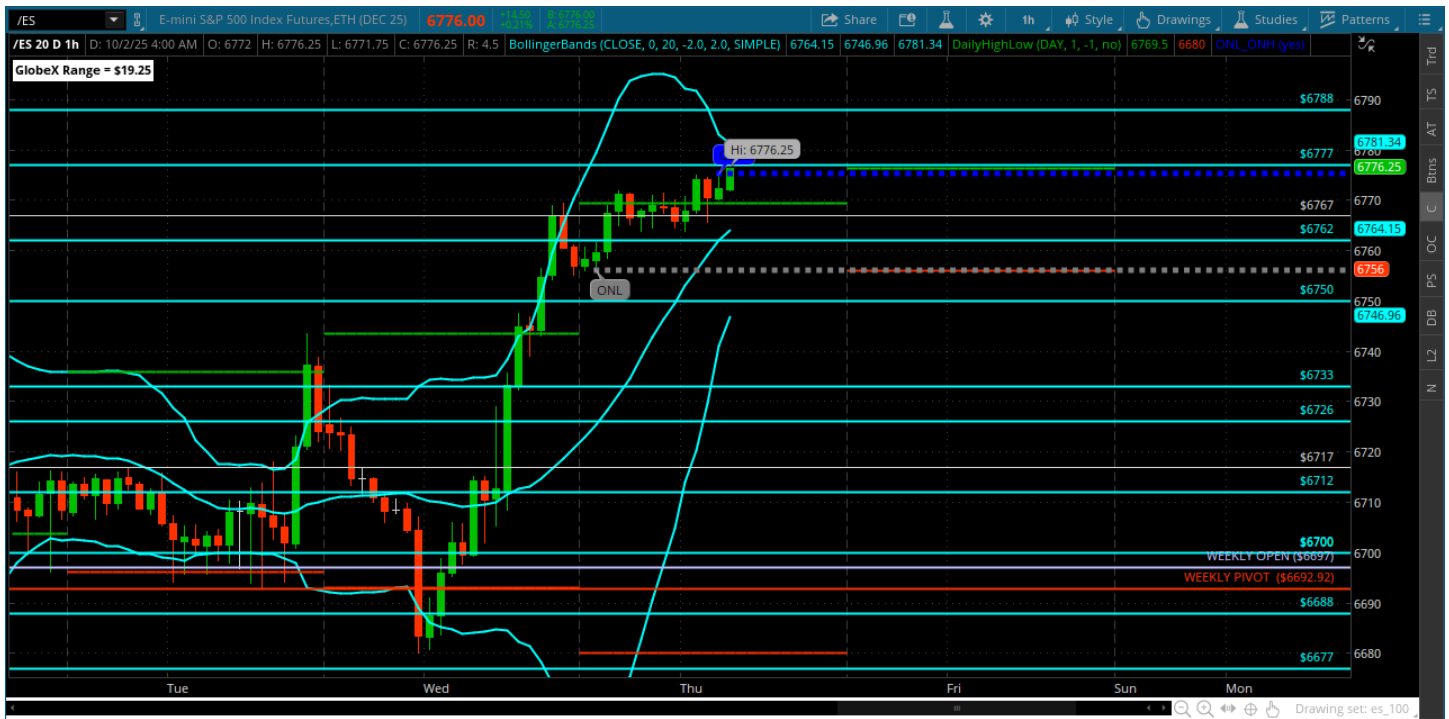
## Pre-Market Charts to Watch

### Thursday, October 2, 2025 Pre-Market /NQ 1 Hour Chart



- Trend day to new all time highs
- Key to the move was off the U SETTLE on Friday and then the conversion of weekly pivot – things to be noted for the future
- Now bulls need to hold pullback and reach for the 25250
- Would like to see a test of yesterdays highs at 25036
-

## Thursday, October 2, 2025 Pre-Market /ES 1 Hour Chart



- New highs – big trend up day yesterday and now getting into view of the 6800
- The key to this move was the test of weekly pivot on Tuesday that rejected and held
- Bulls just need to continue to hold pullbacks at key levels
- Now they need to hold a pullback at the 6750 and 6733

*Disclaimer:*

Disclaimer: Neither TheoTrade or any of its officers, directors, employees, other personnel, representatives, agents or independent contractors is, in such capacities, a licensed financial adviser, registered investment adviser, registered broker-dealer or FINRA|SIPC|NFA-member firm. TheoTrade does not provide investment or financial advice or make investment recommendations. TheoTrade is not in the business of transacting trades, nor does TheoTrade agree to direct your brokerage accounts or give trading advice tailored to your particular situation. Nothing contained in our content constitutes a solicitation, recommendation, promotion, or endorsement of any particular security, other investment product, transaction or investment. Trading Futures, Options on Futures, and retail off-exchange foreign currency transactions involves substantial risk of loss and is not suitable for all investors. You should carefully consider whether trading is suitable for you in light of your circumstances, knowledge, and financial resources. You may lose all or more of your initial investment. Opinions, market data, and recommendations are subject to change at any time. Past Performance is not necessarily indicative of future results.