



## *Tony Rago's Pre-Market Playbook*

---

### ★ Overnight Range

- ES 27.00
- NQ 246.50

### ★ VIX 16.91

- ★ **Bulls** need to hold above yest closes **6763 and 24982 -- long above these**
- ★ Breakouts are above yesterdays highs **6800 and 25196.50 - aggressive longs** (await for confirmation with a new high and a retest of the highs from above that holds)
- ★ **Bears** need under overnight lows **short under 6767 and 24995**
- ★ Breakdown is below yest lows **6754 and 24923 -- aggressive shorts** (wait for confirmation with a new low and a retest of the lows from below that hold)
- ★ **RANGEBOUND: 2 Way trade long and shorts will work** to get the day done
- ★ Keep it simple and be patient for confirmation on either side or establish the range if we are going to be rangebound
- ★ Confirm rally continuation with sustained trade over the 30min IB High and likewise
- ★ bearish under the IB Low

### ECON:

- n/a

## *Pre-Market Trading Levels for today*

---

### **GLOBEX**

#### **NQ**

★ **HIGH:** 25241.50

★ **LOW:** 24995.00

★ **Bull Case** defend the 24912 to seek the 25000, 25106, 25250, 25312, 25333, 25412, 25500, 25612, 25633, 25750, 25812, 25833

★ **Bear Case** seal the 24250 to seek the 25106, 25000, 24912, 24833, 24812, 24750, 24633, 24612, 24500, 24412, 24333, 24312, 24250

★ **Overnight Range - 246.50**

#### **NQ (Prev. Day)**

★ High 25196.50

★ Low 24923.25

★ Close 24982.00

**NQ (Week Open) 25000.00**

## S&P 500

★ **HIGH** - 6794.00

★ **LOW** - 6767.00

★ **Bull Case:** defend the 6750 to seek the 6762, 6777, 6788, 6800, 6812, 6826, 6833, 6850, 6862, 6877

★ **Bear Case:** seal the 6812 to seek the 6800, 6788, 6777, 6762, 6750, 6733, 6726, 6712, 6700, 6688, 6677, 6662, 6650, 6633, 6626, 6612, 6600, 6588, 6577

★ **Overnight Range** - 27.00

### ES (Prev Day)

★ High 6800.00

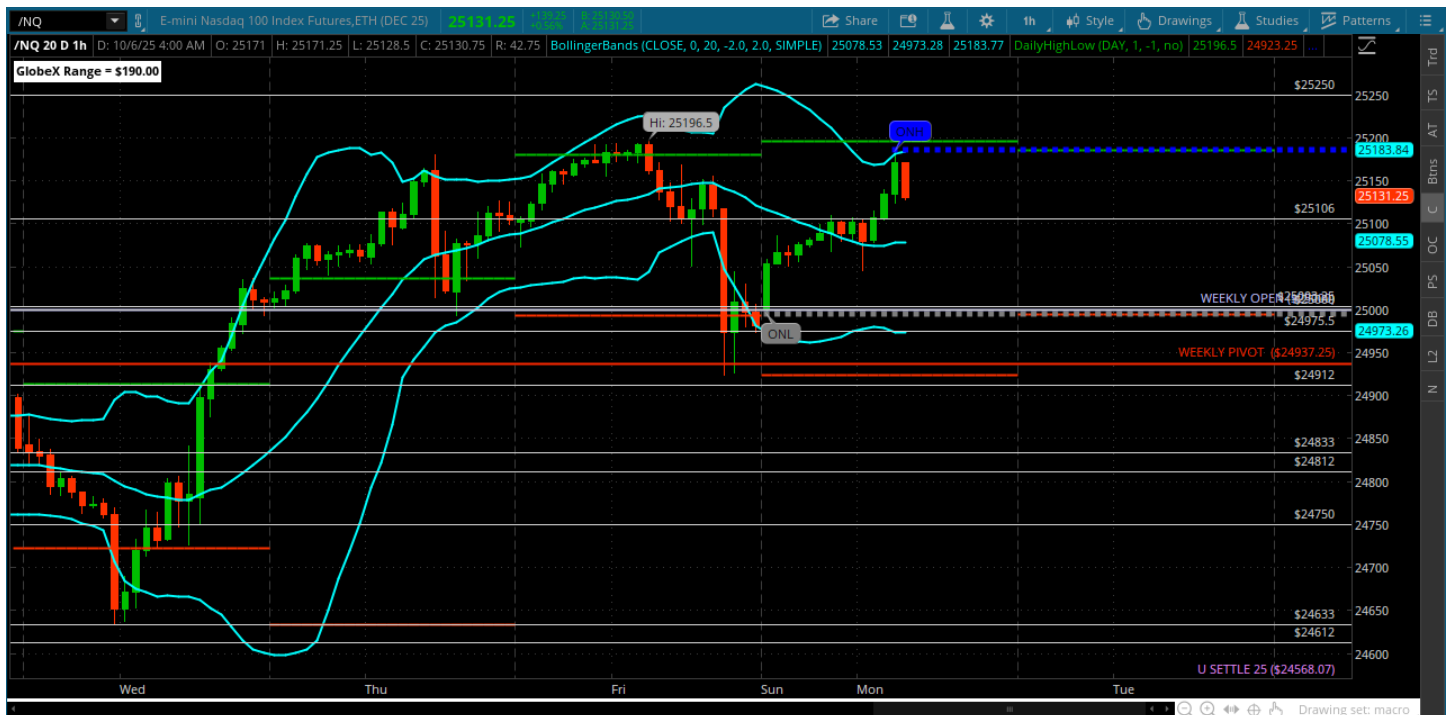
★ Low 6754.00

★ Close 6763.00

**ES (Week Open) 6768.00**

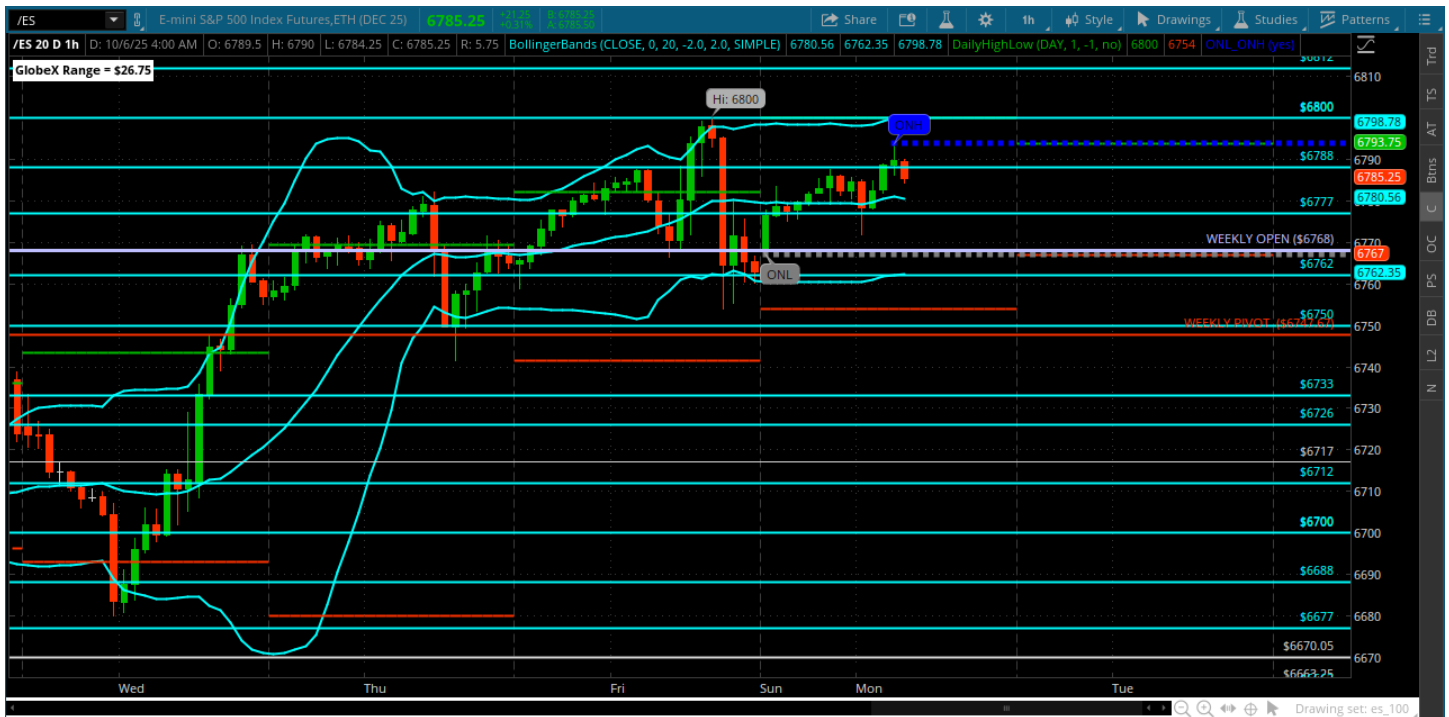
## Pre-Market Charts to Watch

### Monday, October 6, 2025 Pre-Market /NQ 1 Hour Chart



- 25250 is still open for a test if bulls can continue to defend the 25106
- 25000 is the weekly open and weekly pivot just below – will look for support there
- A pullback can start if we close below 25k and weekly pivot on the daily
- For now - bulls still in charge

## Monday, October 6, 2025 Pre-Market /ES 1 Hour Chart



- 6800 Prints and rejects a bit
- Now it is open again for another test – seems to be some resistance up here so will play it as rejection again if the 6812 holds it in
- A bigger pullback starts to materialize below the 6762 and under weekly pivot

*Disclaimer:*

Disclaimer: Neither TheoTrade or any of its officers, directors, employees, other personnel, representatives, agents or independent contractors is, in such capacities, a licensed financial adviser, registered investment adviser, registered broker-dealer or FINRA|SIPC|NFA-member firm. TheoTrade does not provide investment or financial advice or make investment recommendations. TheoTrade is not in the business of transacting trades, nor does TheoTrade agree to direct your brokerage accounts or give trading advice tailored to your particular situation. Nothing contained in our content constitutes a solicitation, recommendation, promotion, or endorsement of any particular security, other investment product, transaction or investment. Trading Futures, Options on Futures, and retail off-exchange foreign currency transactions involves substantial risk of loss and is not suitable for all investors. You should carefully consider whether trading is suitable for you in light of your circumstances, knowledge, and financial resources. You may lose all or more of your initial investment. Opinions, market data, and recommendations are subject to change at any time. Past Performance is not necessarily indicative of future results.