



Tony Rago's Pre-Market Playbook

- ★ ES WEEKLY PIVOT 6747.67
- ★ NQ WEEKLY PIVOT 24937.25
- ★ ES MONTHLY PIVOT 6635.92
- ★ NQ MONTHLY PIVOT 24372.33
- ★ Overnight Range
 - ES 19.00
 - NQ 99.25
- ★ VIX 16.36
- ★ **Bulls** need to hold above yest closes **6790** and **25184**-- long above these
- ★ Breakouts are above yesterdays highs **6797** and **25252** - **aggressive longs** (await for confirmation with a new high and a retest of the highs from above that holds
- ★ **Bears** need under overnight lows **short under 6774** and **25122**
- ★ Breakdown is below yest lows **6766** and **24995** -- **aggressive shorts** (wait for confirmation with a new low and a retest of the lows from below that hold)
- ★ **RANGEBOUND: 2 Way trade long and shorts will work** to get the day done
- ★ Keep it simple and be patient for confirmation on either side or establish the range if we are going to be rangebound
- ★ Confirm rally continuation with sustained trade over the 30min IB High and likewise
- ★ bearish under the IB Low

ECON:

- 10:00 am Atlanta Fed President Raphael Bostic speaks
- 10:05 am Federal Reserve Vice Chair for Supervision Michelle Bowman
- 10:45 am Federal Reserve governor Stephen Miran speaks
- 11:30 am Minneapolis Fed President Neel Kashkari speaks
- 3:00 pm Consumer credit

Pre-Market Trading Levels for today

GLOBEX

NQ

★ **HIGH:** 25221.75

★ **LOW:** 25122.50

★ **Bull Case** defend the 24912 to seek the 25000, 25106, 25250, 25312, 25333, 25412, 25500, 25612, 25633, 25750, 25812, 25833

★ **Bear Case** seal the 24250 to seek the 25106, 25000, 24912, 24833, 24812, 24750, 24633, 24612, 24500, 24412, 24333, 24312, 24250

★ **Overnight Range - 99.25**

NQ (Prev. Day)

★ High 25252.745

★ Low 24995.00

★ Close 25184.00

NQ (Week Open) 25000.00

S&P 500

★ **HIGH** - 6793.00

★ **LOW** - 6774.00

★ **Bull Case:** defend the 6750 to seek the 6762, 6777, 6788, 6800, 6812, 6826, 6833, 6850, 6862, 6877

★ **Bear Case:** seal the 6812 to seek the 6800, 6788, 6777, 6762, 6750, 6733, 6726, 6712, 6700, 6688, 6677, 6662, 6650, 6633, 6626, 6612, 6600, 6588, 6577

★ **Overnight Range** - 19.00

ES (Prev Day)

★ High 6797.75

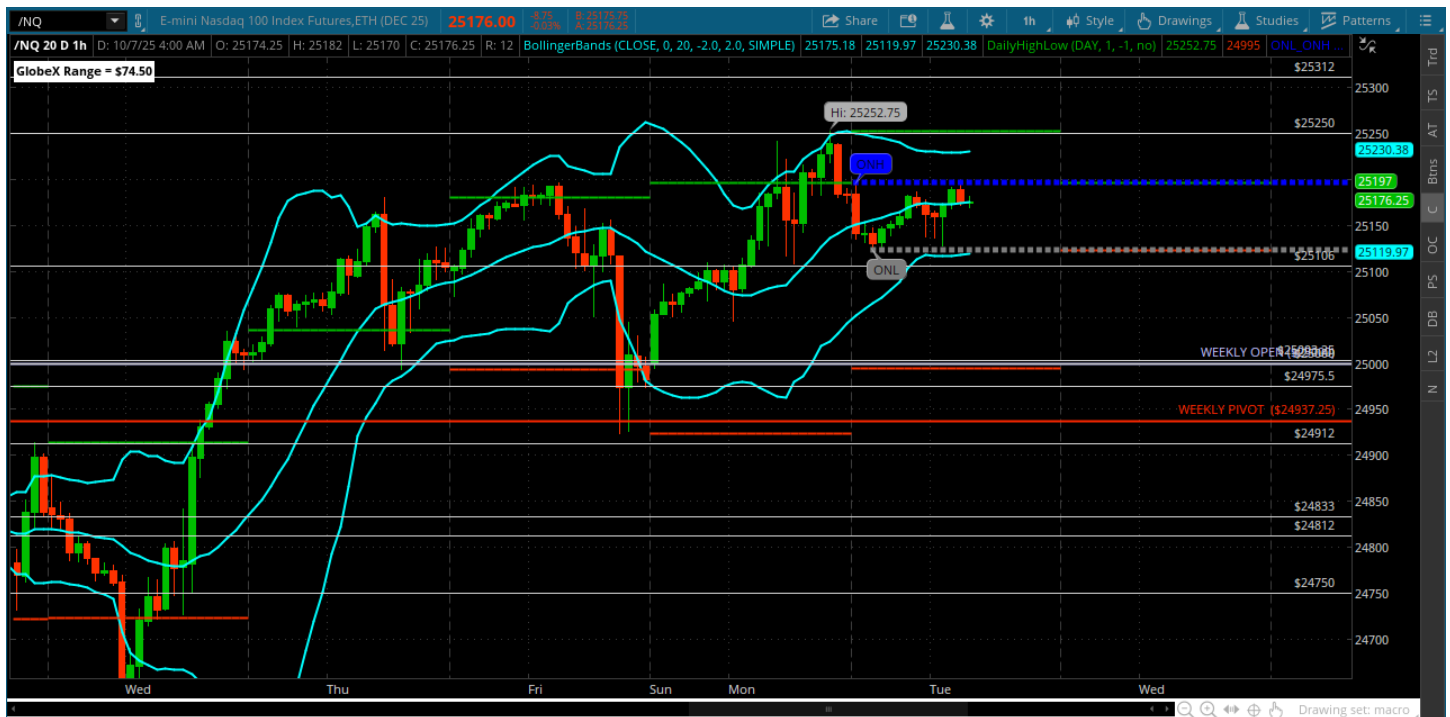
★ Low 6766.50

★ Close 6790.25

ES (Week Open) 6768.00

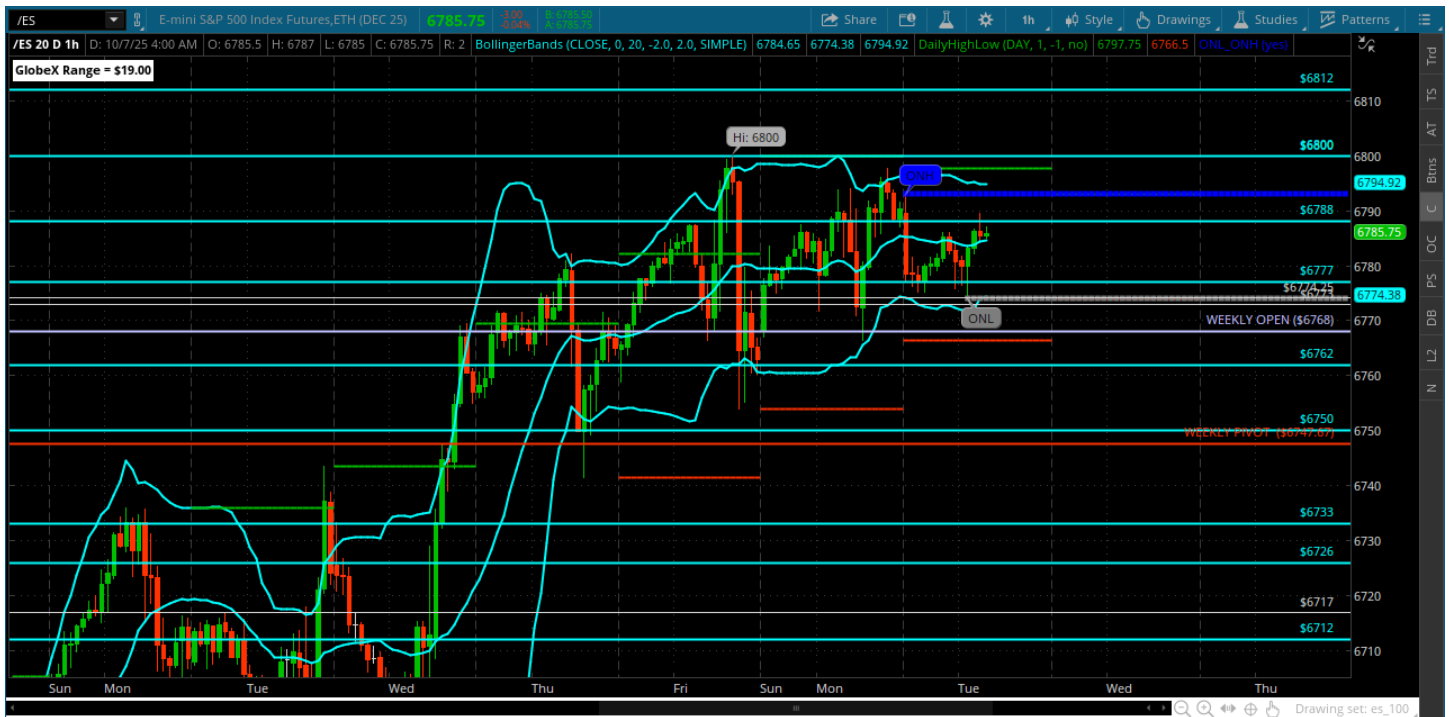
Pre-Market Charts to Watch

Tuesday, October 7, 2025 Pre-Market /NQ 1 Hour Chart



- 25250 target achieved and rejected back towards the 25106
- Breakout occurs above the 25250 with a close above it on the hourly
- Bears need under the 25000 – keep it simple
- Today could be a quiet range day - let the range establish in first 30min

Tuesday, October 7, 2025 Pre-Market /ES 1 Hour Chart



- Price stuck in a zone between 6800-6762 and holding above weekly open for now
- Market needs a reason to move – need a catalyst - maybe govt shutdown resolution?
- Will stick to normal plan
- Bulls need to hold above weekly pivot and bears need to defend the 6800-6812
- Above 6812 sets up a bigger move above

Disclaimer:

Disclaimer: Neither TheoTrade or any of its officers, directors, employees, other personnel, representatives, agents or independent contractors is, in such capacities, a licensed financial adviser, registered investment adviser, registered broker-dealer or FINRA|SIPC|NFA-member firm. TheoTrade does not provide investment or financial advice or make investment recommendations. TheoTrade is not in the business of transacting trades, nor does TheoTrade agree to direct your brokerage accounts or give trading advice tailored to your particular situation. Nothing contained in our content constitutes a solicitation, recommendation, promotion, or endorsement of any particular security, other investment product, transaction or investment. Trading Futures, Options on Futures, and retail off-exchange foreign currency transactions involves substantial risk of loss and is not suitable for all investors. You should carefully consider whether trading is suitable for you in light of your circumstances, knowledge, and financial resources. You may lose all or more of your initial investment. Opinions, market data, and recommendations are subject to change at any time. Past Performance is not necessarily indicative of future results.