



Tony Rago's Pre-Market Playbook

★ Overnight Range

- ES 17.75
- NQ 99.75

★ VIX 16.46

- ★ **Bulls** need to hold above yest closes **6803** and **25354**-- long above these
- ★ Breakouts are above yesterdays highs **6807** and **25364** - **aggressive longs** (await for confirmation with a new high and a retest of the highs from above that holds)
- ★ **Bears** need under overnight lows **short under 6794.50** and **25294**
- ★ Breakdown is below yest lows **6758** and **25026** -- **aggressive shorts** (wait for confirmation with a new low and a retest of the lows from below that hold)
- ★ **RANGEBOUND: 2 Way trade long and shorts will work** to get the day done
- ★ Keep it simple and be patient for confirmation on either side or establish the range if we are going to be rangebound
- ★ Confirm rally continuation with sustained trade over the 30min IB High and likewise
- ★ bearish under the IB Low

ECON:

- 8:30 am Federal Reserve Chair Jerome Powell opening remarks
- 8:30 am Initial jobless claims
- 8:35 am Federal Reserve Vice Chair for Supervision Michelle Bowman
- 10:00 am Wholesale inventories
- 12:45 pm Minneapolis Fed President Neel Kashkari and Fed governor Michael Barr
- 3:45 pm Federal Reserve Vice Chair for Supervision Michelle Bowman speaks

Pre-Market Trading Levels for today

GLOBEX

NQ

★ **HIGH:** 25394.00

★ **LOW:** 25294.25

★ **Bull Case** defend the 25250 to seek the 25312, 25333, 25412, 25500, 25612, 25633, 25750, 25812, 25833

★ **Bear Case** seal the 24412 to seek the 25333, 25312, 25250, 25106, 25000, 24912, 24833, 24812, 24750, 24633, 24612, 24500, 24412, 24333, 24312, 24250

★ **Overnight Range - 99.75**

NQ (Prev. Day)

★ High 25364.75

★ Low 25026.25

★ Close 25354.00

NQ (Week Open) 25000.00

S&P 500

★ **HIGH** - 6812.25

★ **LOW** - 6794.50

★ **Bull Case:** defend the 6777 to seek the 6788, 6800, 6812, 6826, 6833, 6850, 6862, 6877

★ **Bear Case:** seal the 6826 to seek the 6812, 6800, 6788, 6777, 6762, 6750, 6733, 6726, 6712, 6700, 6688, 6677, 6662, 6650

★ **Overnight Range** - 17.75

ES (Prev Day)

★ High 6707.75

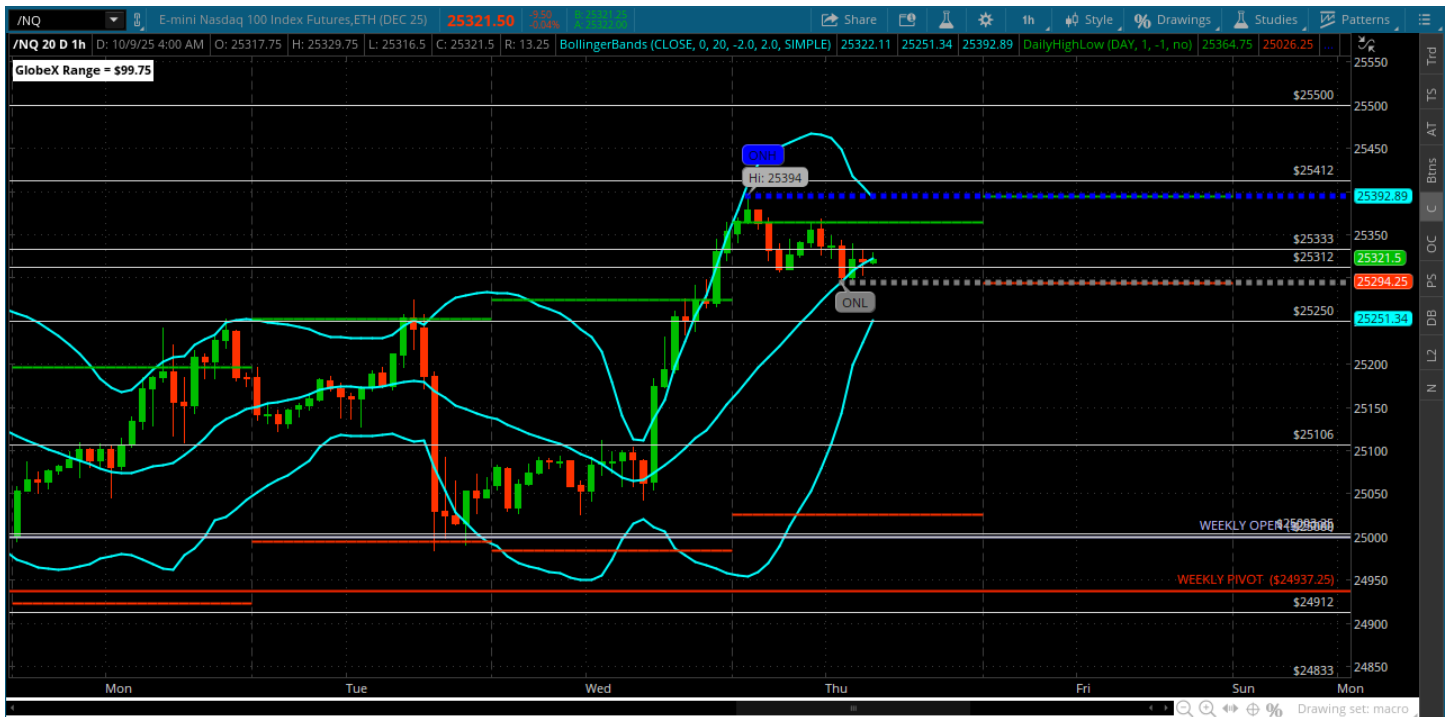
★ Low 6758.25

★ Close 6803.25

ES (Week Open) 6768.00

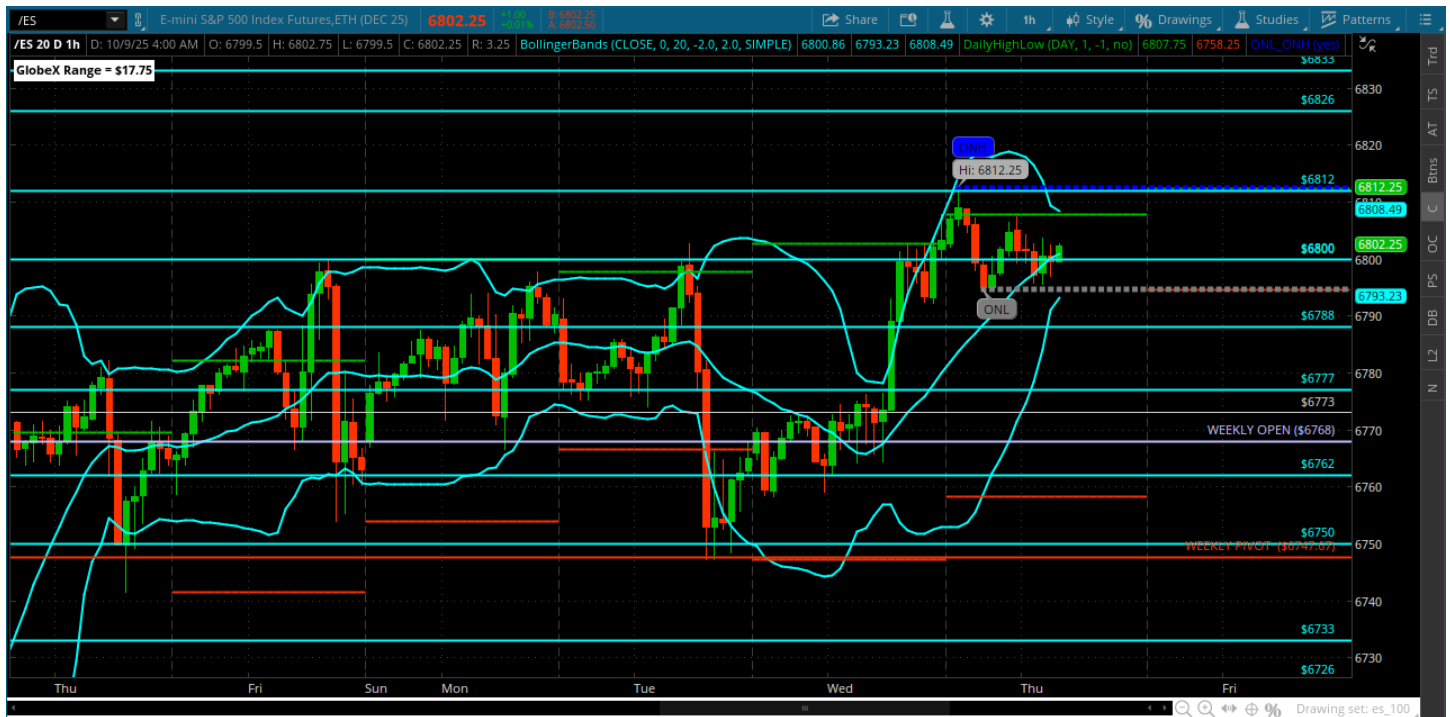
Pre-Market Charts to Watch

Thursday, October 9, 2025 Pre-Market /NQ 1 Hour Chart



- Late day surge brings new highs and opens the 25412 for a test
- Not much stopping this tape at the moment
- Every dip gets bought and we head to new highs
- Looking for a test of 25250 from above for some clues
- Under the 25250 can head back to the 25106

Thursday, October 9, 2025 Pre-Market /ES 1 Hour Chart



- 6812 achieved and a new high -- big move yesterday
- Now it is all about keeping the 6800 as support and moving to the 6826 and 6833
- 6788 and 6782 are levels Bulls MUST hold for that
- Under the 6782 we could relax back into the 6777-6800 range

Disclaimer:

Disclaimer: Neither TheoTrade or any of its officers, directors, employees, other personnel, representatives, agents or independent contractors is, in such capacities, a licensed financial adviser, registered investment adviser, registered broker-dealer or FINRA|SIPC|NFA-member firm. TheoTrade does not provide investment or financial advice or make investment recommendations. TheoTrade is not in the business of transacting trades, nor does TheoTrade agree to direct your brokerage accounts or give trading advice tailored to your particular situation. Nothing contained in our content constitutes a solicitation, recommendation, promotion, or endorsement of any particular security, other investment product, transaction or investment. Trading Futures, Options on Futures, and retail off-exchange foreign currency transactions involves substantial risk of loss and is not suitable for all investors. You should carefully consider whether trading is suitable for you in light of your circumstances, knowledge, and financial resources. You may lose all or more of your initial investment. Opinions, market data, and recommendations are subject to change at any time. Past Performance is not necessarily indicative of future results.