



Tony Rago's Pre-Market Playbook

★ Overnight Range

- ES 20.25
- NQ 104.25

★ VIX 16.56

- ★ **Bulls** need to hold above yest closes **6780** and **25587**-- long above these
- ★ Breakouts are above yesterdays highs **6812** and **25394** - **aggressive longs** (await for confirmation with a new high and a retest of the highs from above that holds)
- ★ **Bears** need under overnight lows **short under 6772** and **25251**
- ★ Breakdown is below yest lows **6760** and **25160** -- **aggressive shorts** (wait for confirmation with a new low and a retest of the lows from below that hold)
- ★ **RANGEBOUND: 2 Way trade long and shorts will work** to get the day done
- ★ Keep it simple and be patient for confirmation on either side or establish the range if we are going to be rangebound
- ★ Confirm rally continuation with sustained trade over the 30min IB High and likewise
- ★ bearish under the IB Low

ECON:

- 9:45 am Chicago Fed President Austan Goolsbee opening remarks
- 10:00 am Consumer sentiment
- 2:00 pm Monthly U.S. federal budget*

Pre-Market Trading Levels for today

GLOBEX

NQ

★ **HIGH:** 25355.25

★ **LOW:** 25251.00

★ **Bull Case** defend the 25250 to seek the 25312, 25333, 25412, 25500, 25612, 25633, 25750, 25812, 25833

★ **Bear Case** seal the 24412 to seek the 25333, 25312, 25250, 25106, 25000, 24912, 24833, 24812, 24750, 24633, 24612, 24500, 24412, 24333, 24312, 24250

★ **Overnight Range - 104.25**

NQ (Prev. Day)

★ High 25394.00

★ Low 25160.75

★ Close 25287.25

NQ (Week Open) 25000.00

S&P 500

★ **HIGH** - 6792.75

★ **LOW** - 67772.50

★ **Bull Case:** defend the 6777 to seek the 6788, 6800, 6812, 6826, 6833, 6850, 6862, 6877

★ **Bear Case:** seal the 6826 to seek the 6812, 6800, 6788, 6777, 6762, 6750, 6733, 6726, 6712, 6700, 6688, 6677, 6662, 6650

★ **Overnight Range** - 20.25

ES (Prev Day)

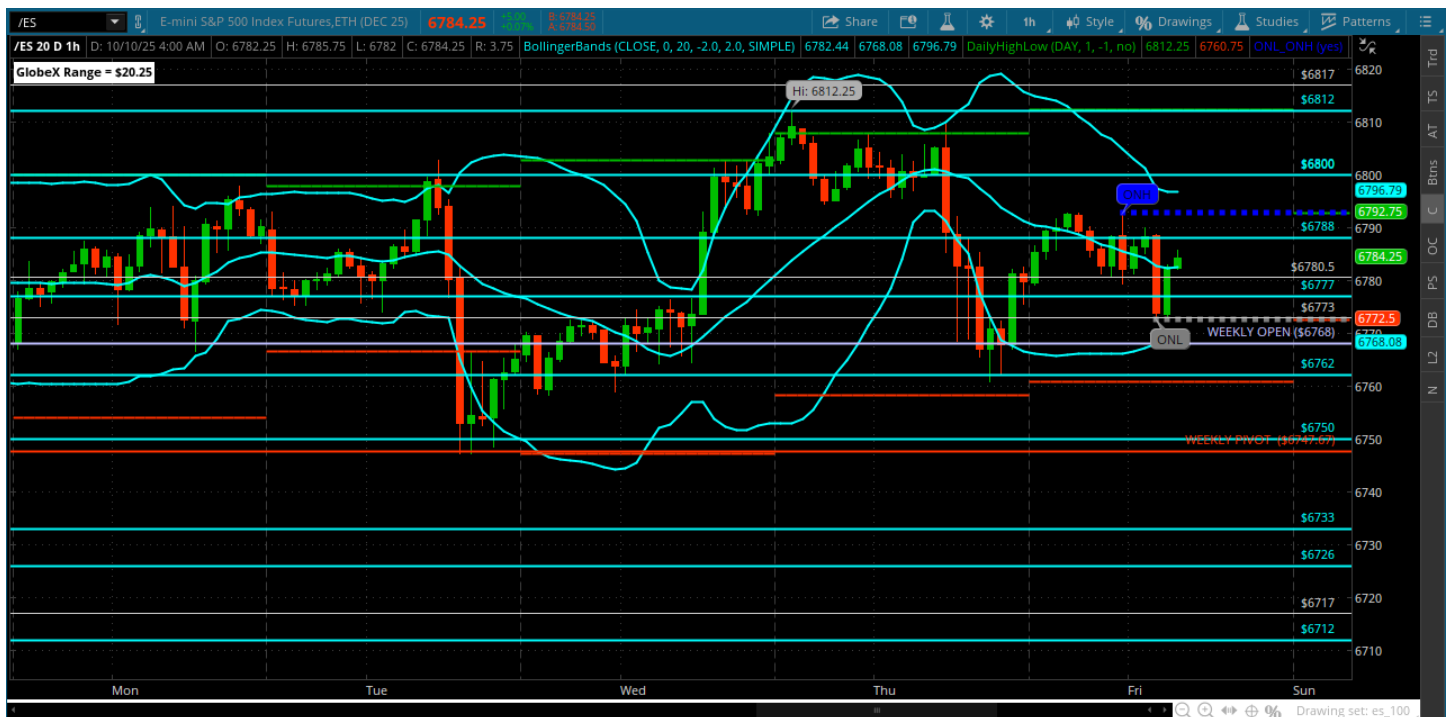
★ High 6712.25

★ Low 6760.75

★ Close 6779.75

ES (Week Open) 6768.00

Friday, October 10, 2025 Pre-Market /ES 1 Hour Chart



- Price is hanging out in a range between the weekly open and 6800
- An hourly close above the 6800 needs to retest the highs and make new ones
- All time highs made in extended hours are typically retested - price needs above the overnight high and that sets up
- Bulls want to close today over the 6800 and bears need to close it below the 6762

Disclaimer:

Disclaimer: Neither TheoTrade or any of its officers, directors, employees, other personnel, representatives, agents or independent contractors is, in such capacities, a licensed financial adviser, registered investment adviser, registered broker-dealer or FINRA|SIPC|NFA-member firm. TheoTrade does not provide investment or financial advice or make investment recommendations. TheoTrade is not in the business of transacting trades, nor does TheoTrade agree to direct your brokerage accounts or give trading advice tailored to your particular situation. Nothing contained in our content constitutes a solicitation, recommendation, promotion, or endorsement of any particular security, other investment product, transaction or investment. Trading Futures, Options on Futures, and retail off-exchange foreign currency transactions involves substantial risk of loss and is not suitable for all investors. You should carefully consider whether trading is suitable for you in light of your circumstances, knowledge, and financial resources. You may lose all or more of your initial investment. Opinions, market data, and recommendations are subject to change at any time. Past Performance is not necessarily indicative of future results.