



Tony Rago's Pre-Market Playbook

- ★ ES WEEKLY PIVOT 6634.83
- ★ NQ WEEKLY PIVOT 24580.17
- ★ Overnight Range
 - ES 74.25
 - NQ 403.75
- ★ VIX 20.49 -- HIGH VOL
- ★ **Bulls** need to hold above yest closes **6552 and 24188-- long above these**
- ★ Breakouts are above yesterdays highs **6806 and 25394 - aggressive longs** (await for confirmation with a new high and a retest of the highs from above that holds)
- ★ **Bears** need under overnight lows **short under 6632 and 24542**
- ★ Breakdown is below yest lows **6540 and 24158 -- aggressive shorts** (wait for confirmation with a new low and a retest of the lows from below that hold)
- ★ **RANGEBOUND: 2 Way trade long and shorts will work** to get the day done
- ★ Keep it simple and be patient for confirmation on either side or establish the range if we are going to be rangebound
- ★ Confirm rally continuation with sustained trade over the 30min IB High and likewise
- ★ bearish under the IB Low

ECON:

- 12:55 pm Philadelphia Fed President Anna Paulson speaks

Pre-Market Trading Levels for today

GLOBEX

NQ

★ **HIGH:** 24945.75

★ **LOW:** 24542.00

★ **Bull Case** defend the 24612 to seek the 24633, 24750, 24812, 24833, 54912, 25000, 25106, 25250, 25312, 25333, 25412, 25500

★ **Bear Case** seal the 25106 to seek the 25000, 24912, 24833, 24812, 24750, 24633, 24612, 24500, 24412, 24333, 24312, 24250

★ **Overnight Range - 403.75**

NQ (Prev. Day)

★ High 25394.00

★ Low 24158.50

★ Close 24188.00

NQ (Week Open) 24542.00

S&P 500

★ **HIGH** - 6706.25

★ **LOW** - 6632.00

★ **Bull Case:** defend the 6650 to seek the 6662, 6677, 6688, 6700, 6712, 6726, 6733, 6750, 6762, 6777, 6788, 6800, 6812, 6826, 6833, 6850, 6862, 6877

★ **Bear Case:** seal the 6726 to seek the 6712, 6700, 6688, 6677, 6662, 6650, 6633, 6626, 6612, 6600, 6588, 6577, 6562, 6550

★ **Overnight Range** - 74.25

ES (Prev Day)

★ High 6806.50

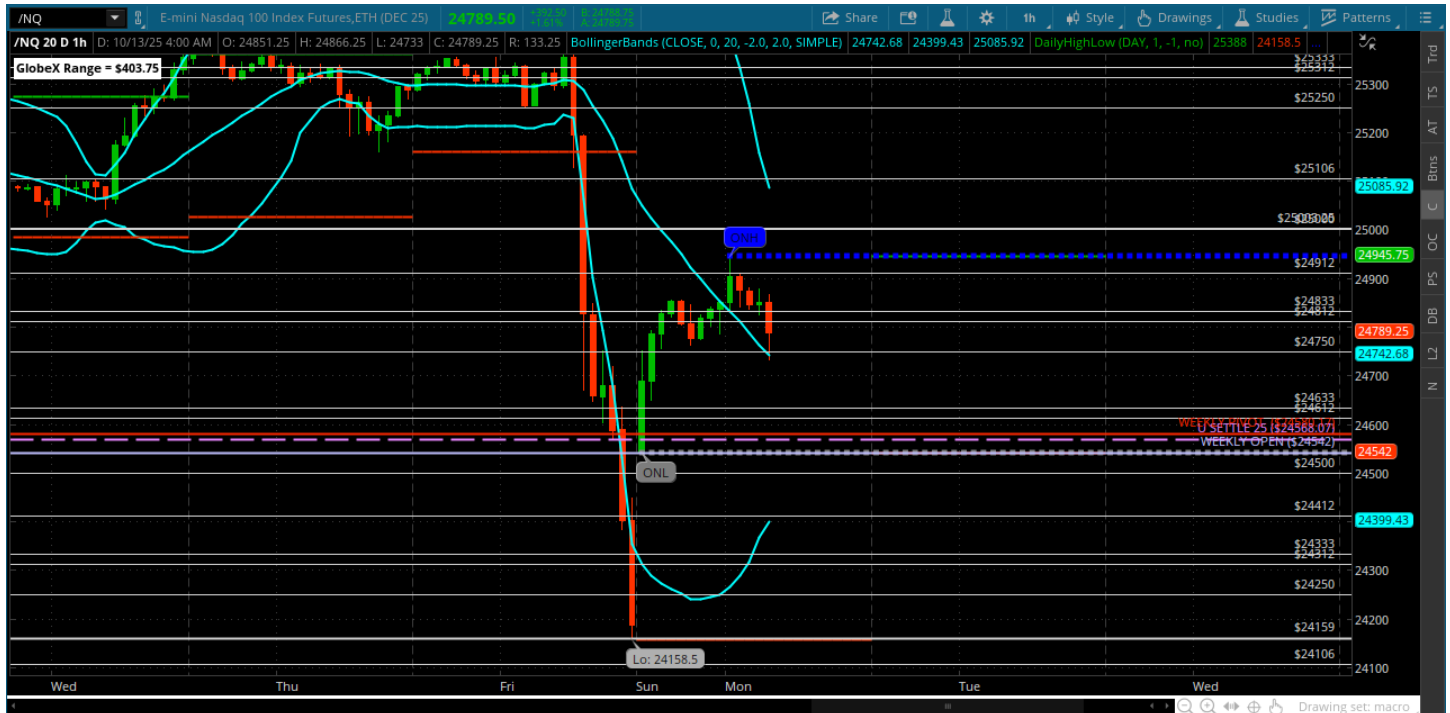
★ Low 6540.25

★ Close 6552.00

ES (Week Open) **6632.00**

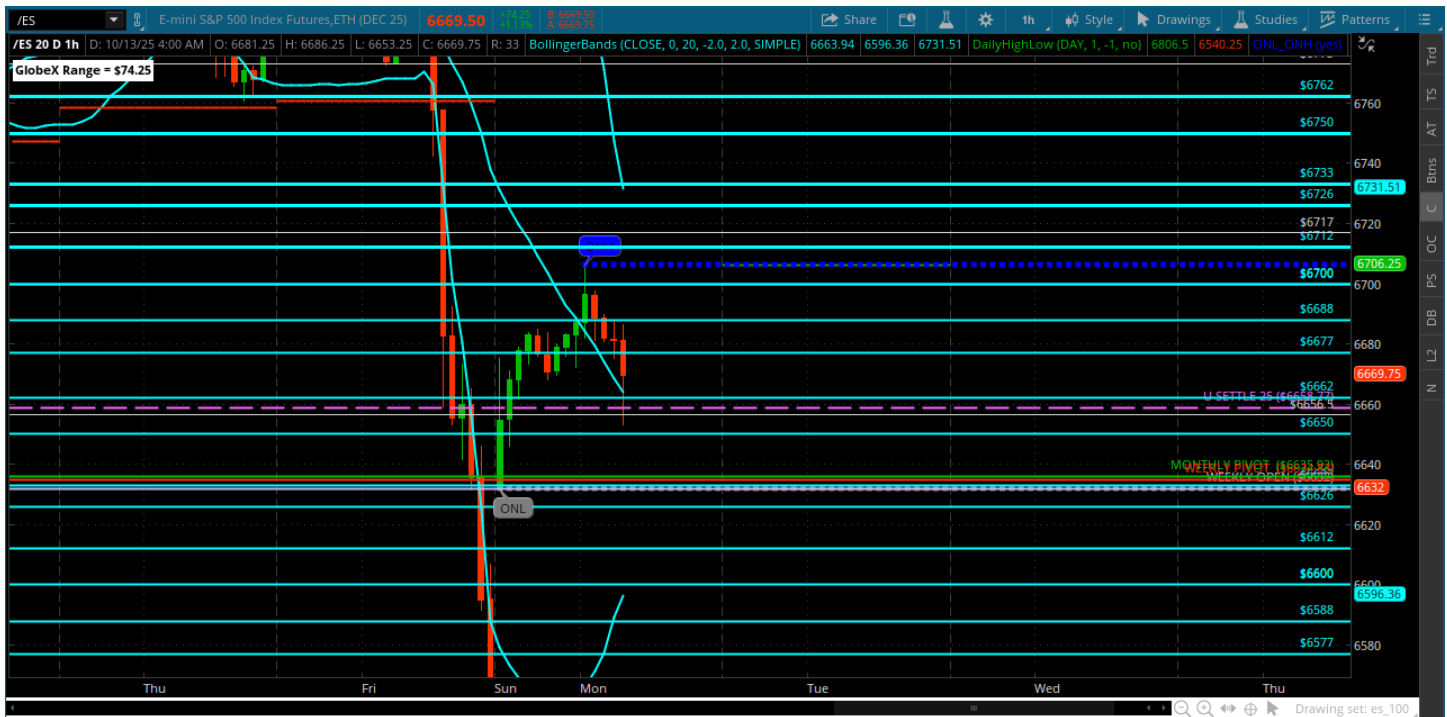
Pre-Market Charts to Watch

Monday, October 12, 2025 Pre-Market /NQ 1 Hour Chart



- Gap up at the open and now trying to hold the 24750
- Could be a very volatile day today -- have to respect the NQ and stay out of very big ATR readings
- Have to let it open and see where we are -- the gap below is big and weekly pivot is below as well

Monday, October 12, 2025 Pre-Market /ES 1 Hour Chart



- Big gap at the open and a retrace to 6700 with some resistance there
- It is respecting the 6658 for now and will see how it wants to trade around that today.
- Below the 6658 sets up a test of weekly pivot and potential gap fill
- Have to be patient today and let price open up

Disclaimer:

Disclaimer: Neither TheoTrade or any of its officers, directors, employees, other personnel, representatives, agents or independent contractors is, in such capacities, a licensed financial adviser, registered investment adviser, registered broker-dealer or FINRA|SIPC|NFA-member firm. TheoTrade does not provide investment or financial advice or make investment recommendations. TheoTrade is not in the business of transacting trades, nor does TheoTrade agree to direct your brokerage accounts or give trading advice tailored to your particular situation. Nothing contained in our content constitutes a solicitation, recommendation, promotion, or endorsement of any particular security, other investment product, transaction or investment. Trading Futures, Options on Futures, and retail off-exchange foreign currency transactions involves substantial risk of loss and is not suitable for all investors. You should carefully consider whether trading is suitable for you in light of your circumstances, knowledge, and financial resources. You may lose all or more of your initial investment. Opinions, market data, and recommendations are subject to change at any time. Past Performance is not necessarily indicative of future results.