



Tony Rago's Pre-Market Playbook

★ Overnight Range

- ES 112.75
- NQ 541.75

★ VIX 21.79-- HIGH VOL

★ **Bulls** need to hold above yest closes **6689** and **24904**-- **long above these**

★ Breakouts are above yesterdays highs **6711** and **24965** - **aggressive longs** (await for confirmation with a new high and a retest of the highs from above that holds

★ **Bears** need under overnight lows **short under 6605** and **24502**

★ Breakdown is below yest lows **6632** and **24542** -- **aggressive shorts** (wait for

★ confirmation with a new low and a retest of the lows from below that hold)

★ **RANGEBOUND: 2 Way trade long and shorts will work** to get the day done

★ Keep it simple and be patient for confirmation on either side or establish the range if we are going to be rangebound

★ Confirm rally continuation with sustained trade over the 30min IB High and likewise

★ bearish under the IB Low

ECON:

- 8:45 am Fed governor Michelle Bowman speaks
- 12:20 pm Fed Chair Jerome Powell speaks
- 3:25 pm Fed governor Christopher Waller speaks
- 3:30 pm Boston Fed President Susan Collins speaks

Pre-Market Trading Levels for today

GLOBEX

NQ

★ **HIGH:** 25044.75

★ **LOW:** 24502.50

★ **Bull Case** defend the 24412 to seek the 24500, 24612, 24633, 24750, 24812, 24833, 54912, 25000, 25106, 25250, 25312, 25333, 25412, 25500

★ **Bear Case** seal the 24750 to seek the 24633, 24612, 24500, 24412, 24333, 24312, 24250, 24106, 24000

★ **Overnight Range - 541.75**

NQ (Prev. Day)

★ High 24965.00

★ Low 24542.00

★ Close 24904.50

NQ (Week Open) 24542.00

S&P 500

★ **HIGH** - 6718.50

★ **LOW** - 6605.75

★ **Bull Case:** defend the 6600 to seek the 6612, 6626, 6633, 6650, 6662, 6677, 6688, 6700, 6712, 6726, 6733, 6750, 6762, 6777, 6788, 6800, 6812, 6826

★ **Bear Case:** seal the 6677 to seek the 6662, 6650, 6633, 6626, 6612, 6600, 6588, 6577, 6562, 6550

★ **Overnight Range** - 112.75

ES (Prev Day)

★ High 6711.50

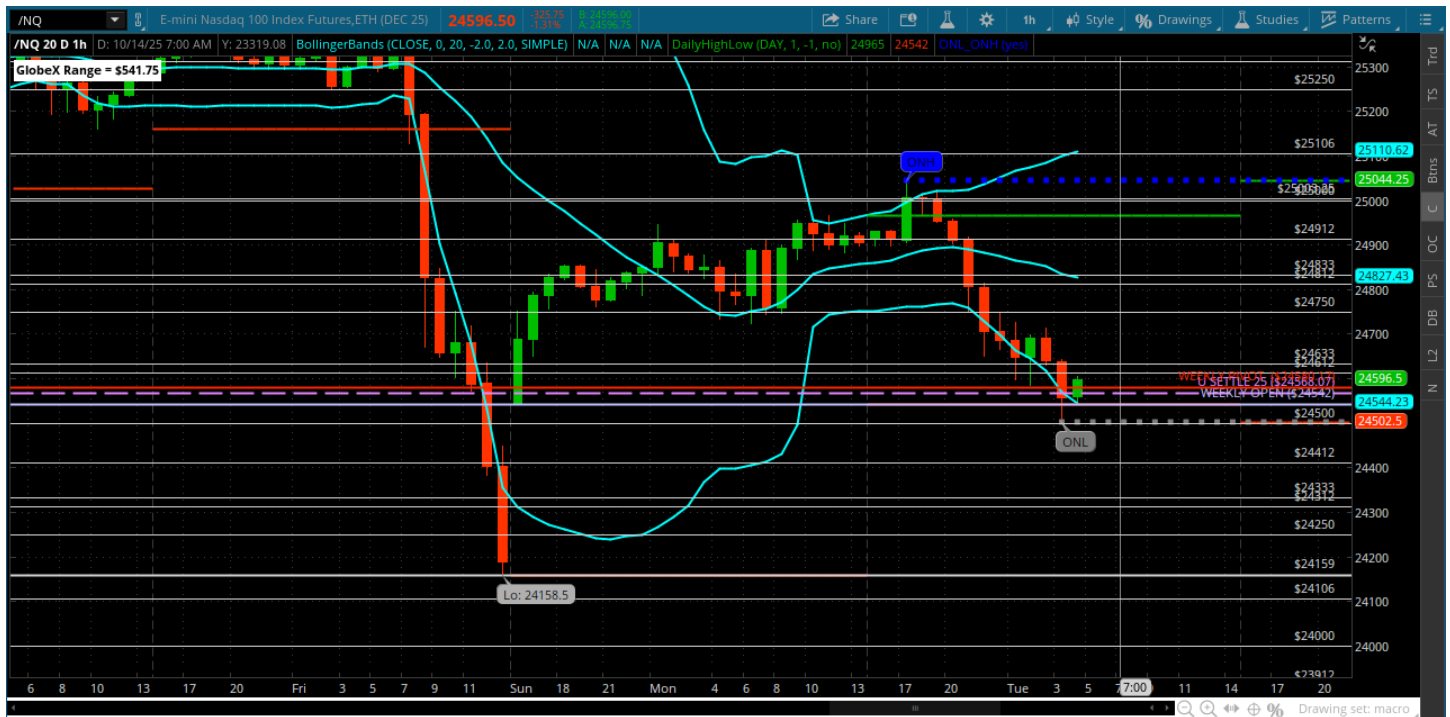
★ Low 6632.00

★ Close 6689.75

ES (Week Open) 6632.00

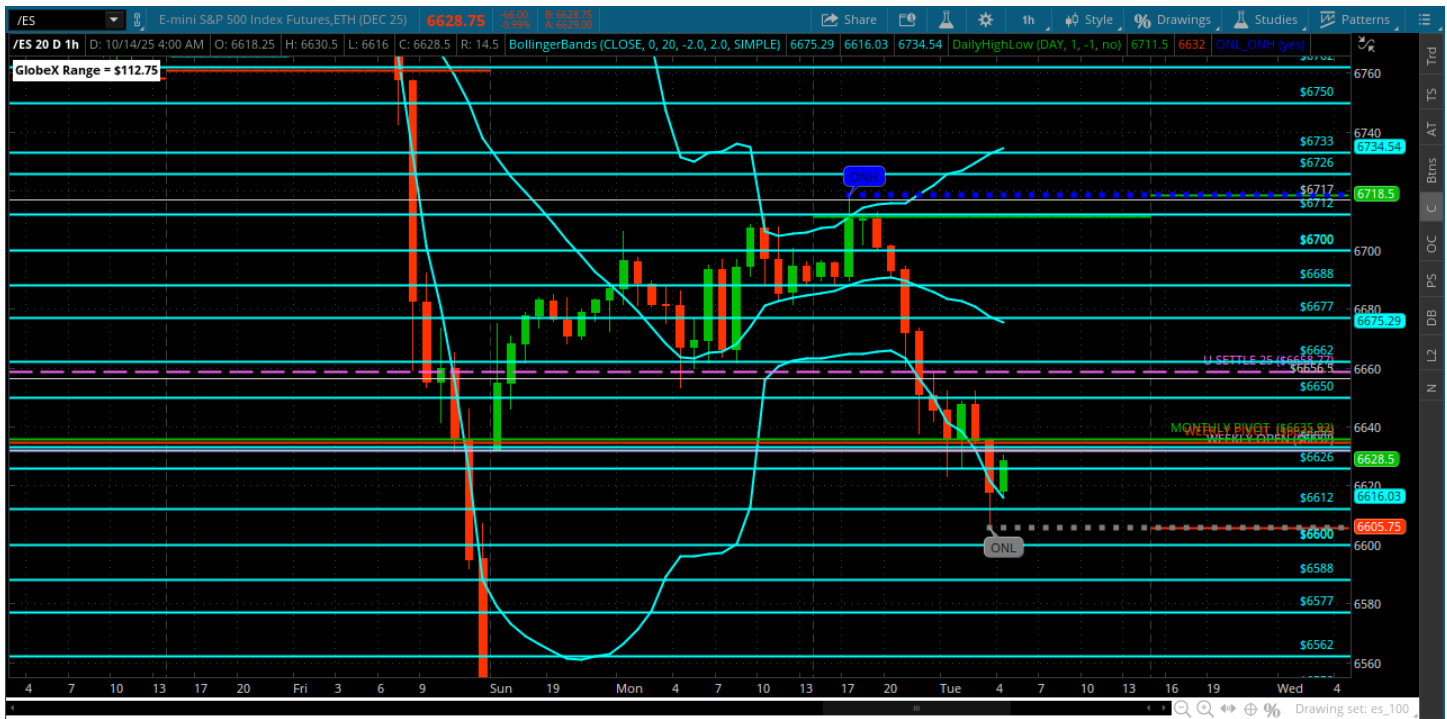
Pre-Market Charts to Watch

Tuesday, October 13, 2025 Pre-Market /NQ 1 Hour Chart



- Weakness overnight and back to the weekly open and weekly pivot
- Gap fill is below at 24188
- Could be a very volatile day today
- Bears need to seal off weekly pivot and weekly open and go get the gap fill
- Dip buyers will be getting a workout today if not trapped from yesterday

Monday, October 12, 2025 Pre-Market /ES 1 Hour Chart



- All about the weekly pivot and weekly open here
- Gap fill below is 6552
- If we can seal off the weekly open and pivot we go get it
- Could be a very volatile day today with lots of moves
- Be patient and wait for your setup!

Disclaimer:

Disclaimer: Neither TheoTrade or any of its officers, directors, employees, other personnel, representatives, agents or independent contractors is, in such capacities, a licensed financial adviser, registered investment adviser, registered broker-dealer or FINRA|SIPC|NFA-member firm. TheoTrade does not provide investment or financial advice or make investment recommendations. TheoTrade is not in the business of transacting trades, nor does TheoTrade agree to direct your brokerage accounts or give trading advice tailored to your particular situation. Nothing contained in our content constitutes a solicitation, recommendation, promotion, or endorsement of any particular security, other investment product, transaction or investment. Trading Futures, Options on Futures, and retail off-exchange foreign currency transactions involves substantial risk of loss and is not suitable for all investors. You should carefully consider whether trading is suitable for you in light of your circumstances, knowledge, and financial resources. You may lose all or more of your initial investment. Opinions, market data, and recommendations are subject to change at any time. Past Performance is not necessarily indicative of future results.