



Tony Rago's Pre-Market Playbook

★ Overnight Range

- ES 57.50
- NQ 284.00

★ VIX 19.49-- HIGH VOL

★ **Bulls** need to hold above yest closes **6593** and **24756**-- long above these

★ Breakouts are above yesterdays highs **6722** and **25044** - **aggressive longs** (await for confirmation with a new high and a retest of the highs from above that holds

★ **Bears** need under overnight lows **short under 6683** and **24740**

★ Breakdown is below yest lows **6593** and **24421** -- **aggressive shorts** (wait for

★ confirmation with a new low and a retest of the lows from below that hold)

★ **RANGEBOUND: 2 Way trade long and shorts will work** to get the day done

★ Keep it simple and be patient for confirmation on either side or establish the range if we are going to be rangebound

★ Confirm rally continuation with sustained trade over the 30min IB High and likewise

★ bearish under the IB Low

ECON:

- 8:30 am Empire State manufacturing survey
- 12:10 pm Atlanta Fed President Raphael Bostic speaks
- 12:30 pm Fed governor Stephen Miran speaks
- 1:00 pm Fed governor Christopher Waller speaks
- 2:00 pm Fed Beige Book

Pre-Market Trading Levels for today

GLOBEX

NQ

★ **HIGH:** 25024.50

★ **LOW:** 24740.50

★ **Bull Case** defend the 24633 to seek the 24750, 24812, 24833, 54912, 25000, 25106, 25250, 25312, 25333, 25412, 25500

★ **Bear Case** seal the 25000 to seek the 24912, 24833, 24812, 24750, 24633, 24612, 24500, 24412, 24333, 24312, 24250, 24106, 24000

★ **Overnight Range - 284.00**

NQ (Prev. Day)

★ High 25044.25

★ Low 24421.00

★ Close 24756.25

NQ (Week Open) 24542.00

S&P 500

★ **HIGH** - 6741.00

★ **LOW** - 6683.50

★ **Bull Case:** defend the 6677 to seek the 6688, 6700, 6712, 6726, 6733, 6750, 6762, 6777, 6788, 6800, 6812, 6826

★ **Bear Case:** seal the 6750 to seek the 6733, 6726, 6712, 6700, 6688, 6677, 6662, 6650, 6633, 6626, 6612, 6600, 6588, 6577, 6562, 6550

★ **Overnight Range** - 57.50

ES (Prev Day)

★ High 6722.50

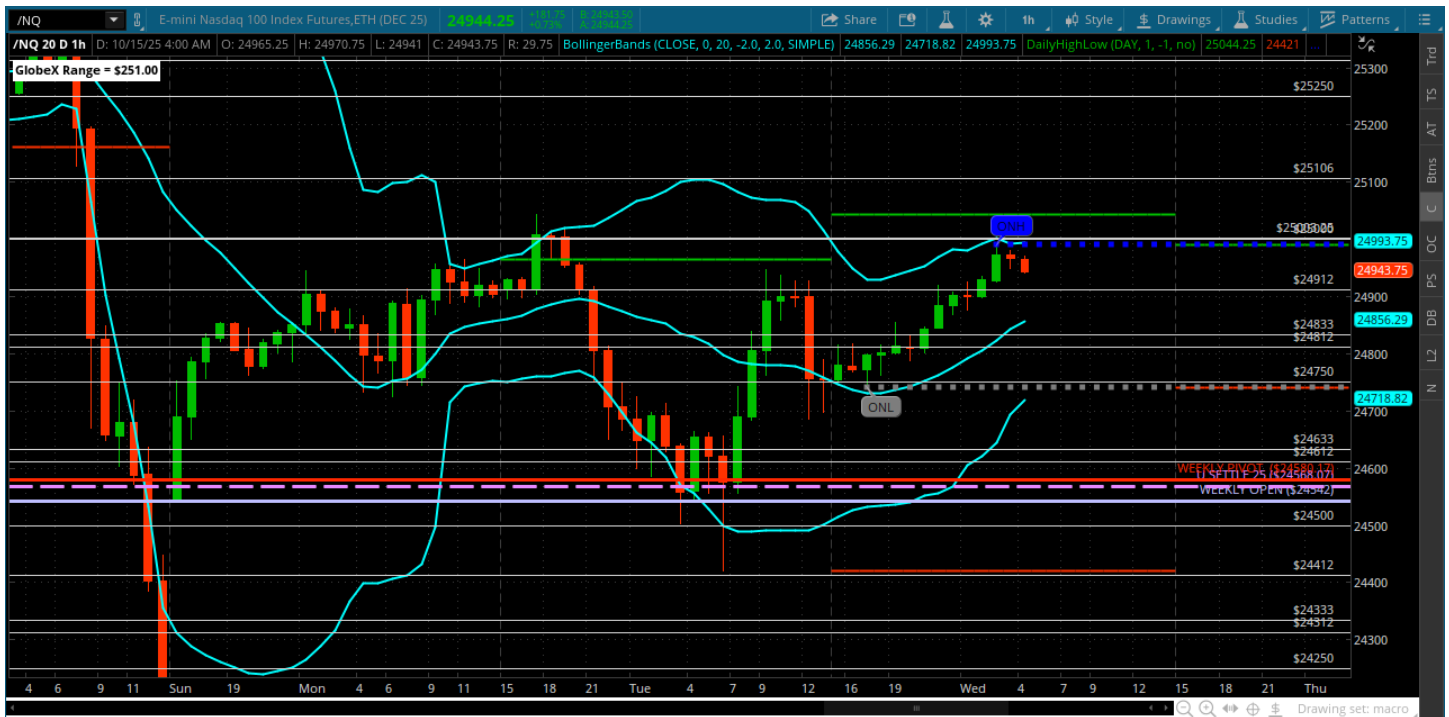
★ Low 6593.25

★ Close 6685.00

ES (Week Open) 6632.00

Pre-Market Charts to Watch

Wednesday, October 15, 2025 Pre-Market /NQ 1 Hour Chart



- BIG rally off lows yesterday and back to the 25000 - would like to see a test of that in RTH
- Bulls need to hold a test of the 24750 and 24633 on a retest and close above the 25000
- Bears need back below the 24750 and the 24633 to get anything going
- We may hang in this range between 24750-25000 - we will see

Disclaimer:

Disclaimer: Neither TheoTrade or any of its officers, directors, employees, other personnel, representatives, agents or independent contractors is, in such capacities, a licensed financial adviser, registered investment adviser, registered broker-dealer or FINRA|SIPC|NFA-member firm. TheoTrade does not provide investment or financial advice or make investment recommendations. TheoTrade is not in the business of transacting trades, nor does TheoTrade agree to direct your brokerage accounts or give trading advice tailored to your particular situation. Nothing contained in our content constitutes a solicitation, recommendation, promotion, or endorsement of any particular security, other investment product, transaction or investment. Trading Futures, Options on Futures, and retail off-exchange foreign currency transactions involves substantial risk of loss and is not suitable for all investors. You should carefully consider whether trading is suitable for you in light of your circumstances, knowledge, and financial resources. You may lose all or more of your initial investment. Opinions, market data, and recommendations are subject to change at any time. Past Performance is not necessarily indicative of future results.